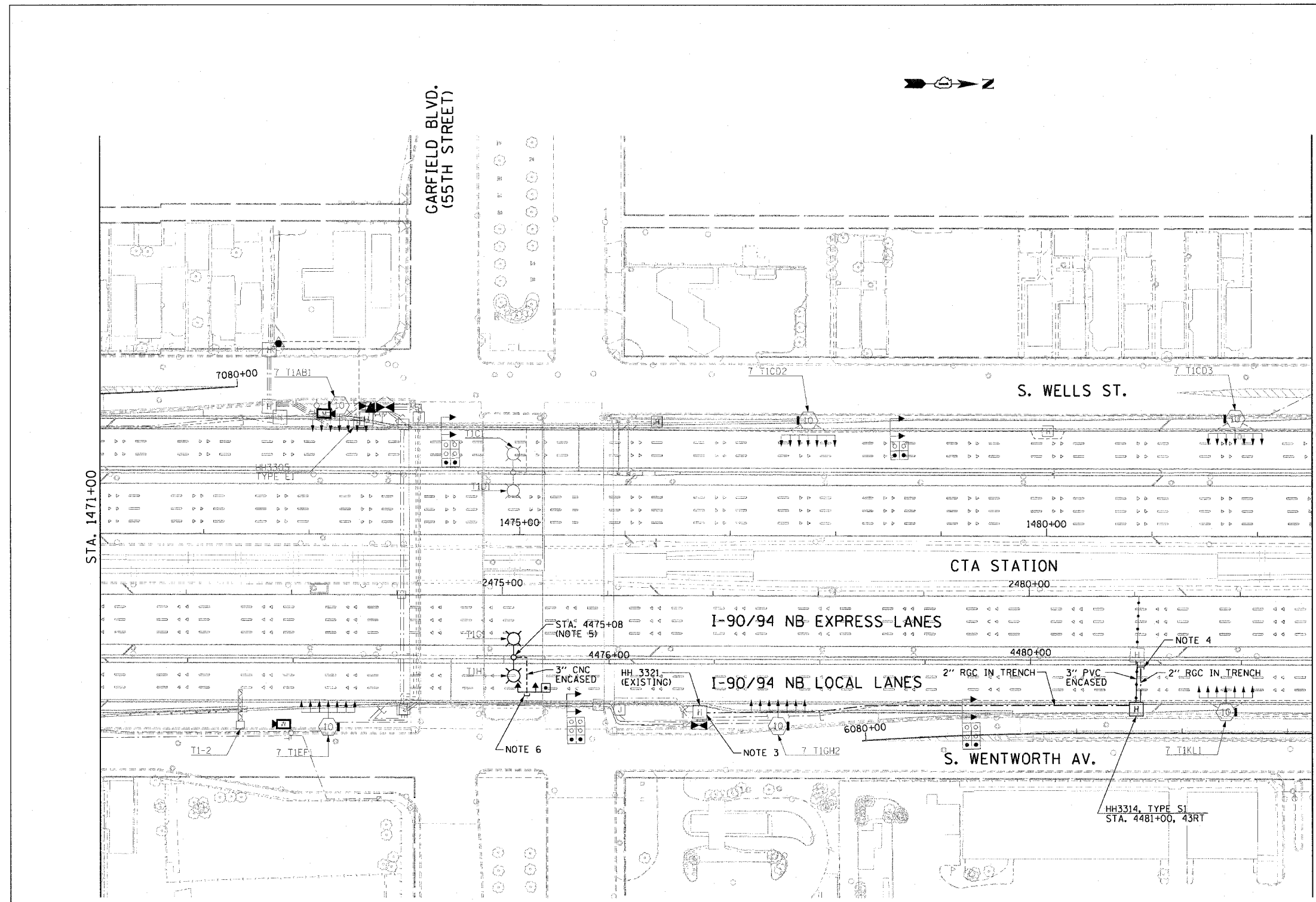


F.A.I. RTE.	SECTION	COUNTY	TOTAL SHEETS	SHEET NO.
90/94		COOK	565	296
STA. 1471+00.00		TO STA. 1482+50.00		
FED. ROAD DIST. NO. 1	ILLINOIS	FED. AID PROJECT		
62301	(2021-922 PT2 ETC 2324.6-1P) R-10			

NOTES:

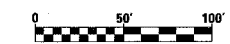
- SEE DRAWINGS EI-100 AND EI-101 FOR ELECTRICAL SYMBOLS AND ABBREVIATIONS.
- SEE DRAWINGS EI-102, EI-103, AND EI-104 FOR TYPICAL HANDHOLE INSTALLATION DETAILS.
- THE CONTRACTOR SHALL DRILL EXISTING HH3321 (COMMUNICATIONS VAULT) FOR INSTALLATION OF 2" RGC CONDUIT. COST OF DRILLING HANDHOLE SHALL NOT BE PAID FOR SEPARATELY BUT SHALL BE INCLUDED IN THE COST OF 2" RGC IN TRENCH.
- THE CONTRACTOR SHALL LOCATE THE EXISTING CONDUIT STUB-OUT INSTALLED IN IDOT CONTRACT NO. 62300 AND CONNECT THE PROPOSED CONDUIT.
- THE CONTRACTOR SHALL INSTALL LIGHT POLE FOUNDATION. SEE SHEET EI-110 FOR FOUNDATION DETAIL. LIGHT POLE AND LUMINAIRES WILL BE INSTALLED UNDER IDOT CONTRACT 62583.
- THE CONTRACTOR SHALL LOCATE THE EXISTING DUCT BANK INSTALLED IN IDOT CONTRACT 62586 AND CONNECT THE PROPOSED CONDUIT.
- UNLESS NOTED OTHERWISE, ALL ITEMS AND WORK SHOWN IN HEAVY LINE WEIGHT ON THIS DRAWING ARE PROPOSED NEW ITEMS AND WORK.

A:\A49465\escrib\8-contrs 18 & 19\contract 18\sta\1480.33.dwg



MATCH LINE STA. 1482+50
SEE SHEET EI-34

CTE | AECOM



EI-33

REVISIONS		ILLINOIS DEPARTMENT OF TRANSPORTATION F.A.I. 90/94 (DAN RYAN EXPRESSWAY) GARFIELD BLVD TO 31ST STREET (NB LOCAL LANES) ELECTRICAL INFRASTRUCTURE PLAN
NAME	DATE	

SCALE: 1"=50'
DATE: June 9, 2006

DRAWN BY: HAR
CHECKED BY: JPC

06/07/2006 10:50:47 AM