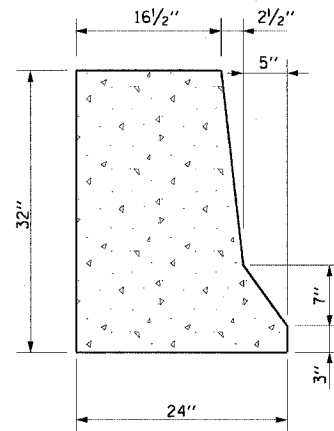
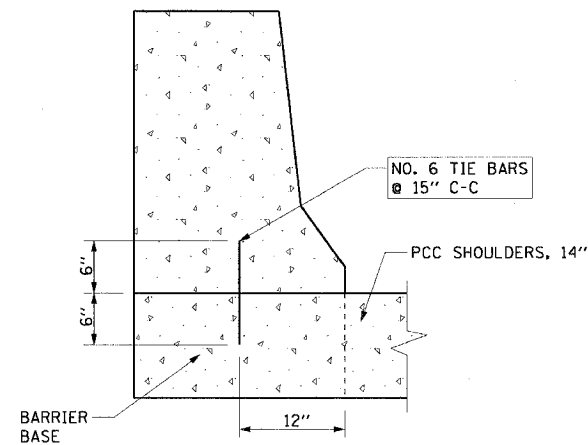


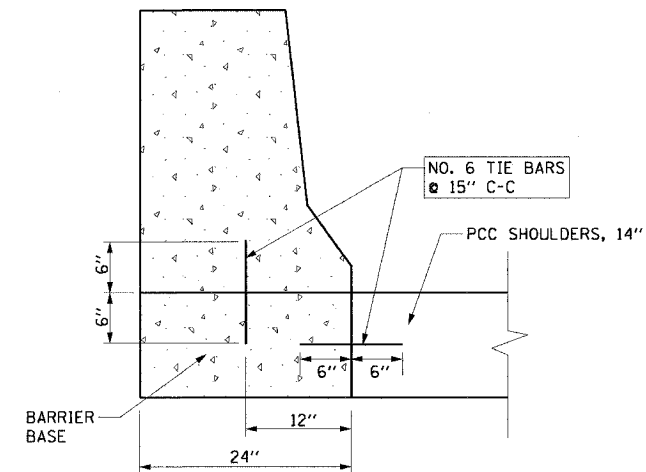
F.A.I. RTE.	SECTION	COUNTY	TOTAL SHEETS	SHEET NO.
90/94	*	COOK	565	333
STA.	TO STA.			
FED. ROAD DIST. NO. 1 ILLINOIS FED. AID PROJECT				
62301 • (2021-922 PT2 ETC 2324.6-1P) R-10				



CONCRETE BARRIER
TYPICAL SECTION



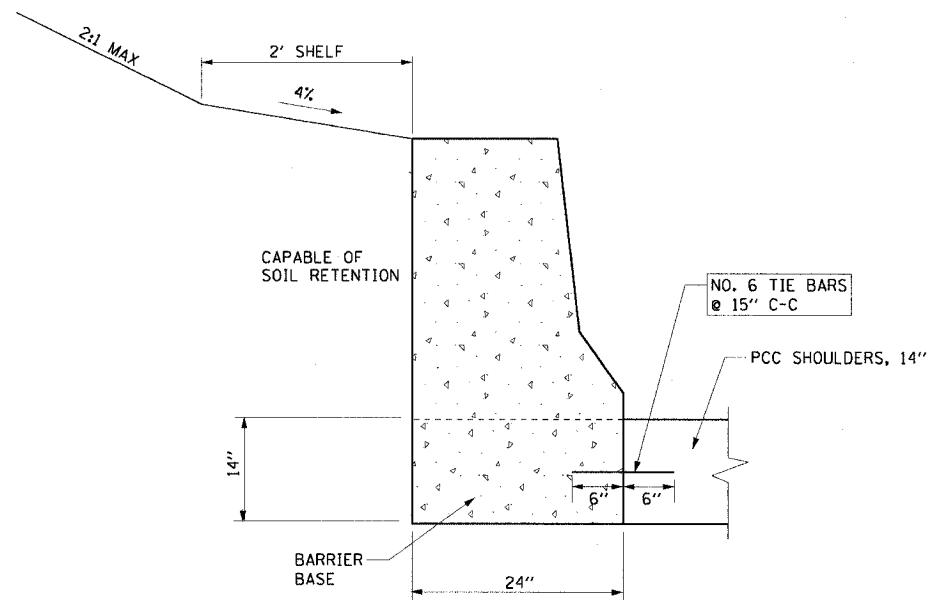
ANCHORING METHOD



CONCRETE BARRIER ON
INDEPENDANT FOUNDATION

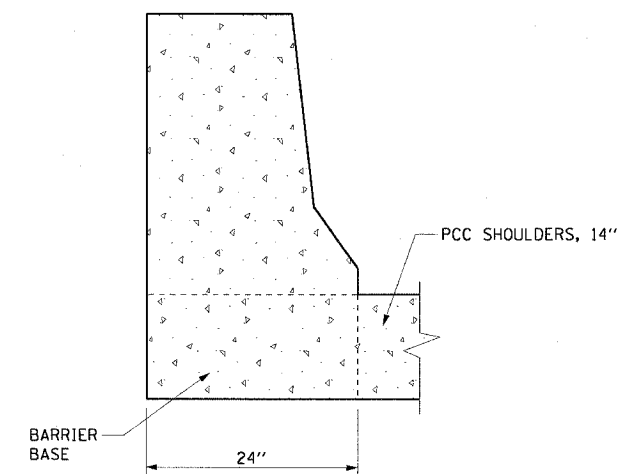
NOTES:

1. TIE BARS SHALL BE EPOXY COATED AND INCLUDED IN THE COST OF CONCRETE BARRIER, SINGLE FACE, 32" HEIGHT AND BARRIER BASE.
2. THE CONTRACTOR HAS THE OPTION OF CHOOSING BETWEEN ANCHORING METHODS SHOWN ON THIS SHEET.
3. THE 1/2" PREFORMED JOINT FILLER SHALL BE INCLUDED IN THE COST OF THE CONCRETE BARRIER, SINGLE FACE, 32", MODIFIED.

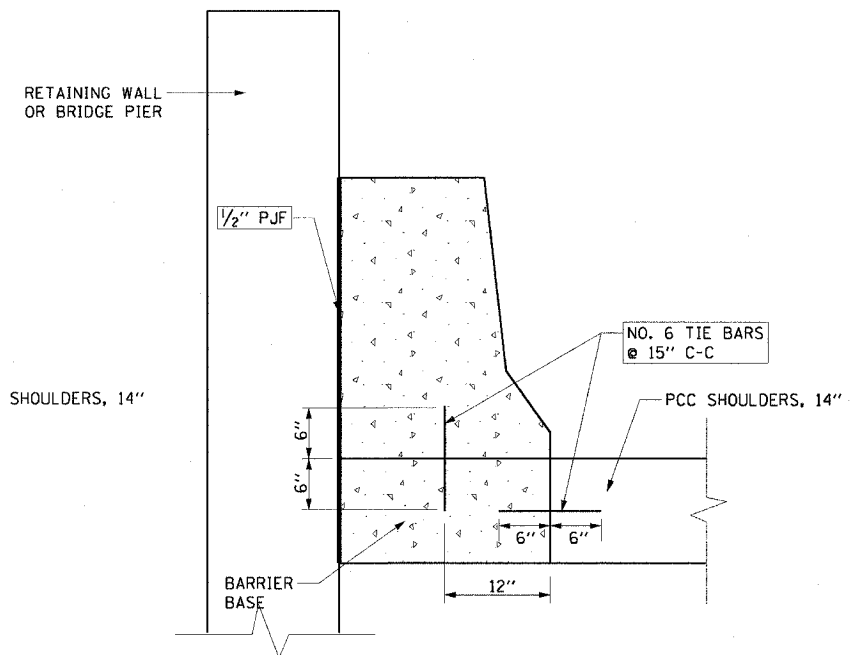


MONOLITHIC CONCRETE BARRIER

IF SOIL RETENTION IS USED, 14" PCC SHOULDER PAVEMENT MUST BE IN PLACE PRIOR TO BACKFILLING BARRIER WALL



CONCRETE BARRIER INTEGRAL
WITH PCC SHOULDERS, 14"



CONCRETE BARRIER
SINGLE FACE, 32", MODIFIED

STA 4622+37.22 TO STA 4622+94.11 RT
STA 4629+06.50 TO STA 4629+37.74 RT
STA 4635+54.98 TO STA 4636+29.69 RT

REVISIONS	
NAME	DATE

ILLINOIS DEPARTMENT OF TRANSPORTATION
F.A.I. 90/94 (DAN RYAN EXPRESSWAY)
GARFIELD BLVD TO 31ST STREET (NB LOCAL LANES)

ROADWAY DETAILS
CONCRETE BARRIER, SINGLE FACE 32" HEIGHT

SCALE: NONE
DATE: June 9, 2006

DRAWN BY: RLK
CHECKED BY: EL