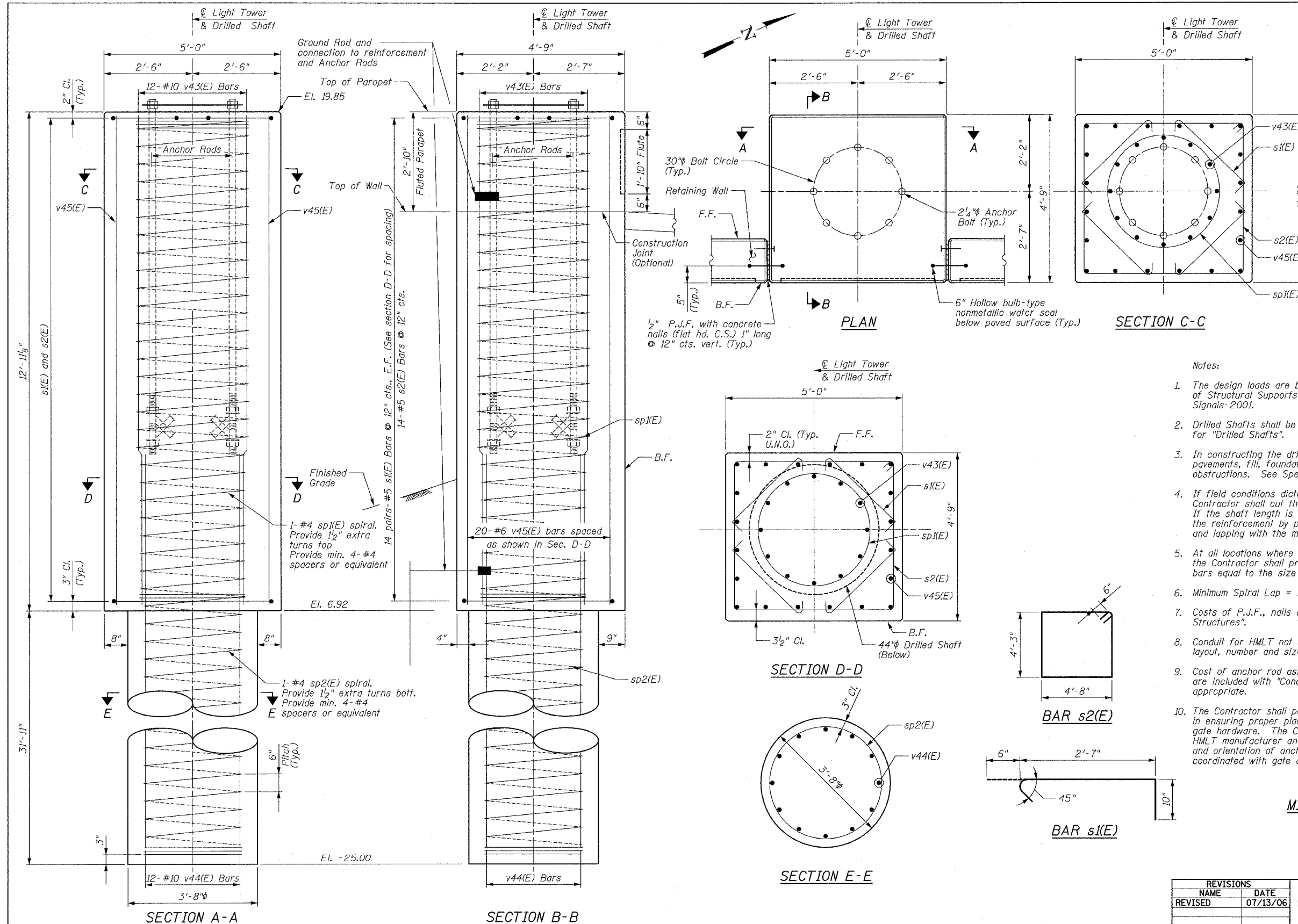


F.A.I.	SECTION	COUNTY	TOTAL SHEETS	SHEET NO.
94/90		COOK	565	382
STA.	TO STA.			
FED. ROAD DIST. NO.	ILLINOIS	FED. AID PROJECT		
62301	*2021-922	PT2 ETC 2324.6-1P	R-10	

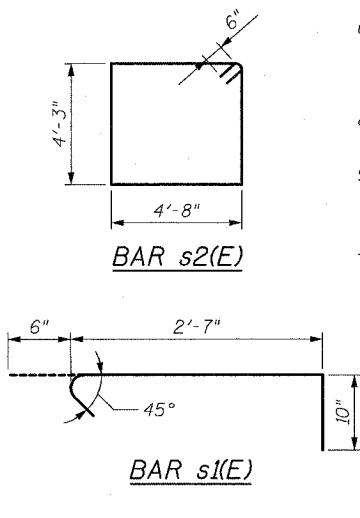
BILL OF MATERIAL

Bar	No.	Size	Length	Shape
s1(E)	56	#5	3'-11"	□
s2(E)	14	#5	18'-10"	□
**sp1(E)	1	#4	12'-6"	W
**sp2(E)	1	#4	33'-0"	W
v43(E)	12	#10	12'-6"	—
v44(E)	12	#10	37'-9"	—
v45(E)	20	#6	12'-6"	—
Reinforcement Bars, Epoxy Coated *			Pound	4,240
Concrete Structures			Cu. Yd.	8.9
Concrete Superstructure			Cu. Yd.	2.5
Drilled Shaft in Soil, 44"			Foot	32

Reinforced Bars designated (E) shall be epoxy coated.
 * Weight Includes 4-#4 spacer bars
 ** Length indicates height of spiral



- Notes:
- The design loads are based on AASHTO Standard Specifications of Structural Supports for Highway Signs, Luminaires and Traffic Signals-2001.
 - Drilled Shafts shall be installed according to IDOT Special Provisions for "Drilled Shafts".
 - In constructing the drilled shafts, the Contractor may encounter pavements, fill, foundations, abandoned utilities, boulders and other obstructions. See Special Provisions for "Drilled Shaft in Soil, 44"
 - If field conditions dictate a shorter shaft length than shown, the Contractor shall cut the reinforcement bars to their required length. If the shaft length is longer than indicated, the Contractor shall extend the reinforcement by providing additional reinforcement of equal size and lapping with the minimum lap length shown.
 - At all locations where reinforcement bar laps are not in direct contact, the Contractor shall provide sufficient spacing between the vertical bars equal to the size of the largest concrete aggregate plus 1/2 inch.
 - Minimum Spiral Lap = 1/2 turns
 - Costs of P.J.F., nails and water seal shall be included with "Concrete Structures".
 - Conduit for HMLT not shown for clarity. See Sheet 11 for location, layout, number and size of conduit.
 - Cost of anchor rod assembly, conduit, wires and grounding requirements are included with "Concrete Structures" or "Drilled Shaft in Soil, 44" as appropriate.
 - The Contractor shall pay particular attention to construction tolerances in ensuring proper placement of reinforcement bars, anchor rods and gate hardware. The Contractor shall coordinate with Contract 62733, the HMLT manufacturer and installer, as required, to ensure proper placement and orientation of anchor rods and HMLT. Orientation of HMLT must be coordinated with gate and handhole clearances.



MIN BAR LAP

#4	1'-8"
#5	2'-2"
#6	2'-7"
#10	5'-10"

SHEET 10 OF 24

REVISIONS	NAME	DATE
REVISED		07/13/06

ILLINOIS DEPARTMENT OF TRANSPORTATION
 F.A.I. 94/90 (DAN RYAN EXPRESSWAY)
 GARFIELD BLVD TO 31ST STREET (NB LOCAL LANES)
 COOK COUNTY
 STA. 4529+75.90 TO STA. 4537+30.74
 RETAINING WALL N-47N-R
 LIGHT TOWER FOUNDATION DETAILS
 S.N. 016-W977
 SCALE: NTS
 DATE: JUNE 9, 2006
 DRAWN BY: MTR
 CHECKED BY: BLU

BOWMAN, BARRETT & ASSOCIATES INC.
 CONSULTING ENGINEERS
 Chicago, Illinois
 312.228.0100
 www.bbainc.com