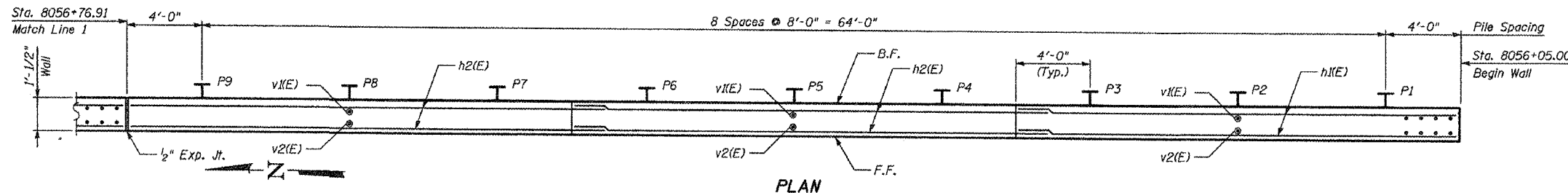
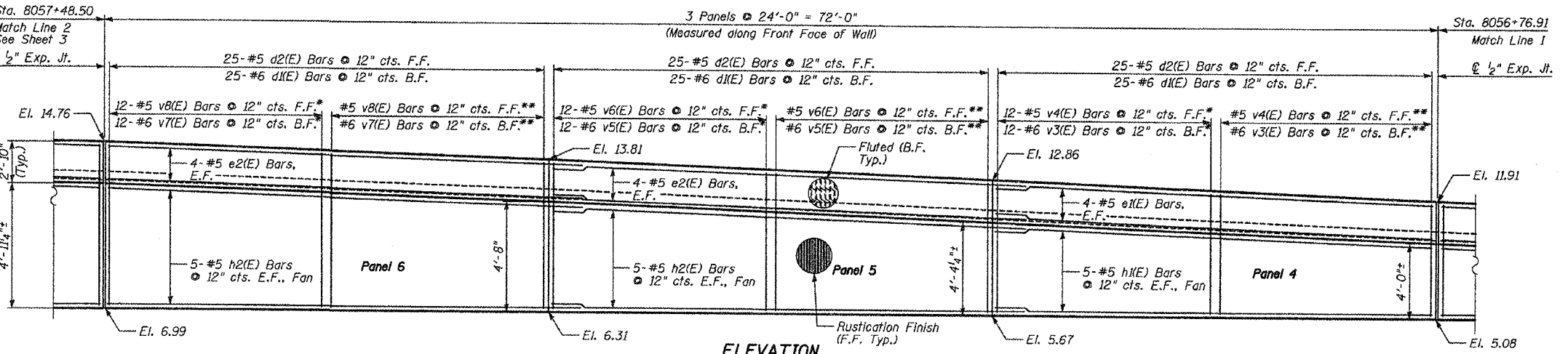


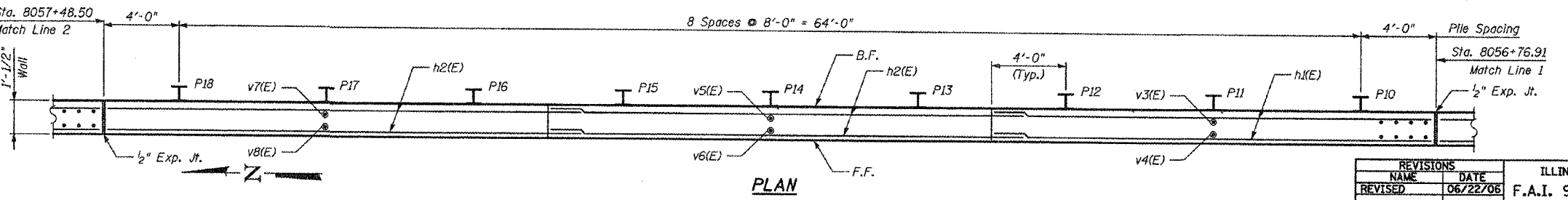
**ELEVATION**



**PLAN**



**ELEVATION**



**PLAN**

F.A.I.	SECTION	COUNTY	TOTAL SHEETS	SHEET NO.
94/90			565	407
STA.	TO STA.			
FED. ROAD DIST. NO.	ILLINOIS FED. AID PROJECT			
62301	*I2021-922 PT2 ETC 2324.6-1P1 R-10			

- Notes:
1. Stationing given is @ Ramp 43D.
  2. Facing in Plan Views is scaled 1:2 on an X:Y scale to show reinforcement.
  3. See details for reinforcing bar clearances.

\* Order bars full length and cut as indicated in Cutting Diagram

\*\* Remaining bars from Cutting Diagram

F.F. - denotes Front Face  
B.F. - denotes Back Face  
E.F. - denotes Each Face

**MIN. BAR LAP**

- #5 - 2'-2"
- #6 - 2'-7"

SHEET 2 OF 9

ILLINOIS DEPARTMENT OF TRANSPORTATION  
F.A.I. 94/90 (DAN RYAN EXPRESSWAY)  
GARFIELD BLVD TO 31ST STREET (NB LOCAL LANES)

RETAINING WALL N-43S-R  
WALL DETAILS 1

SCALE: NTS  
DATE: JUNE 9, 2006  
DRAWN BY: LAM  
CHECKED BY: BLU

REVISIONS	
NAME	DATE
REVISED	06/22/06

BOWMAN, BARRETT & ASSOCIATES INC.  
CONSULTING ENGINEERS  
Chicago, Illinois  
312.228.0100  
www.bbandainc.com

11/6/05 10:40 AM IN/VIEW/RETAINING WALLS/94/90/31ST/31ST.DWG  
 2/23/2006