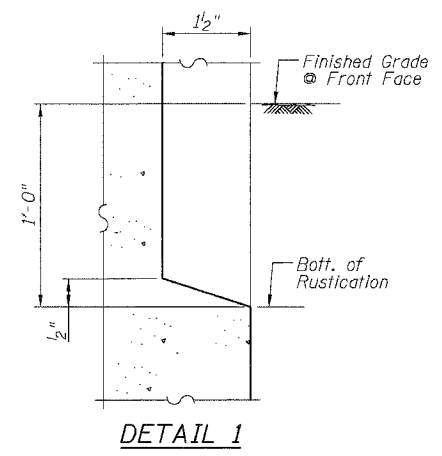
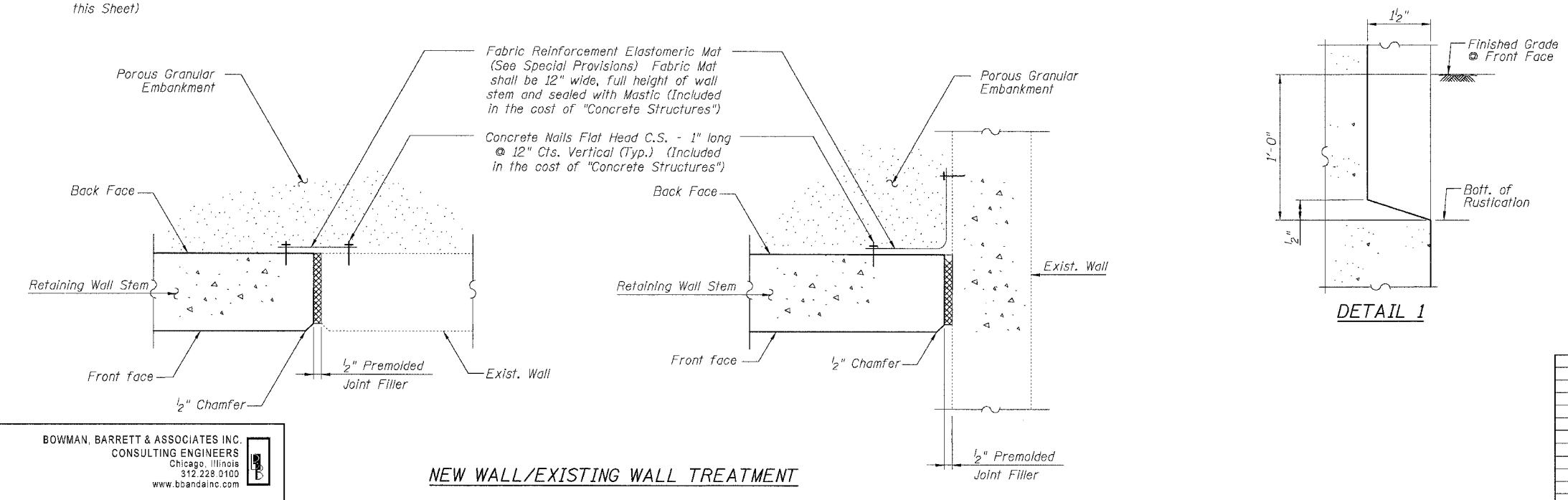
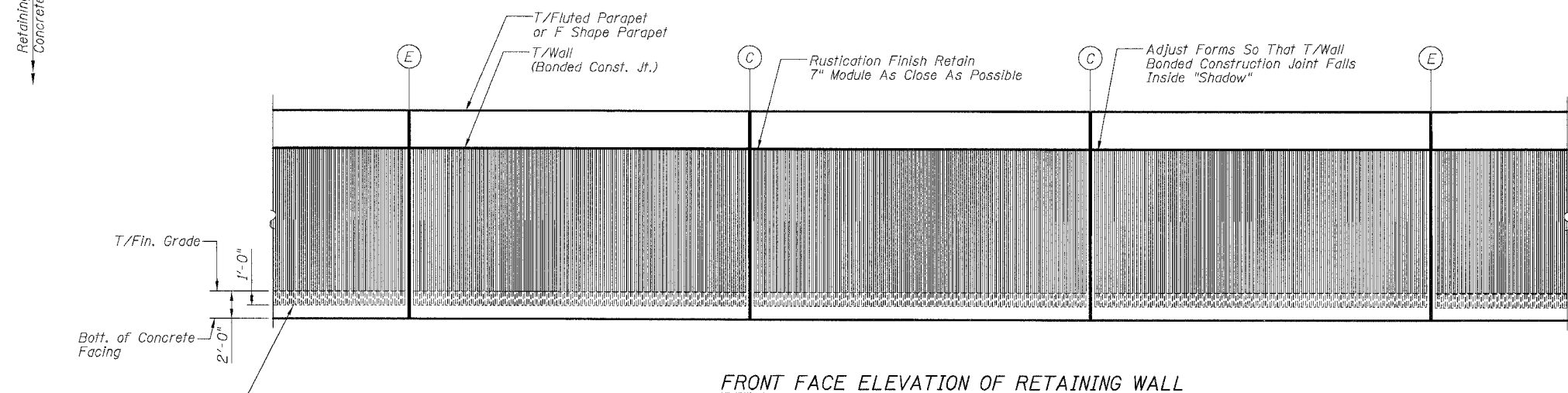
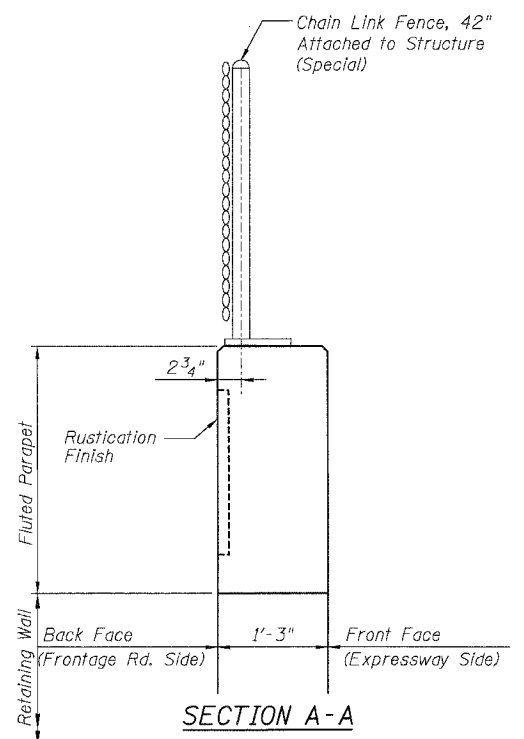
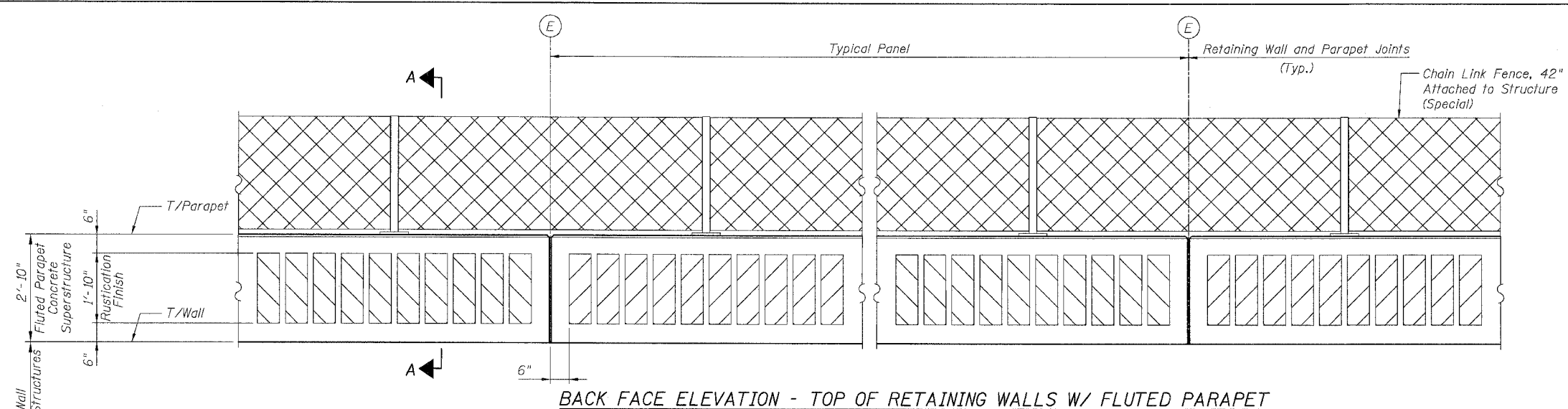


F.A.I.	SECTION	COUNTY	TOTAL SHEETS	SHEET NO.
94/90		COOK	565	416
STA.	TO STA.			
FED. ROAD DIST. NO.	ILLINOIS FED. AID PROJECT			
62301 • (2021-922 PT2 ETC 2324.6-1P) R-10				



- NOTES:**
1. Back Face is face adjacent to Frontage Rd. and Front Face is face adjacent to Expressway.
 2. See Wall Elevations for panel dimensions.
 3. See Sheet SD1 for Chain Link Fence, 42" Attached to Structure (Special) Details.

- LEGEND:**
- (E) Expansion Joint
 - Chain Link Fabric
 - Rustication Finish

BOWMAN, BARRETT & ASSOCIATES INC.
CONSULTING ENGINEERS
Chicago, Illinois
312.228.0100
www.bbandainc.com

NEW WALL/EXISTING WALL TREATMENT

REVISIONS	
NAME	DATE

SHEET SD2 OF SD11
ILLINOIS DEPARTMENT OF TRANSPORTATION
F.A.I. 94/90 (DAN RYAN EXPRESSWAY)
GARFIELD BLVD TO 31ST STREET (NB LOCAL LANES)
TYPICAL FLUTED PARAPET & RUSTICATION FINISH DETAILS
SCALE: NTS
DATE: JUNE 9, 2006
DRAWN BY: MTR
CHECKED BY: BLU

6/7/2006 5:31:49 PM