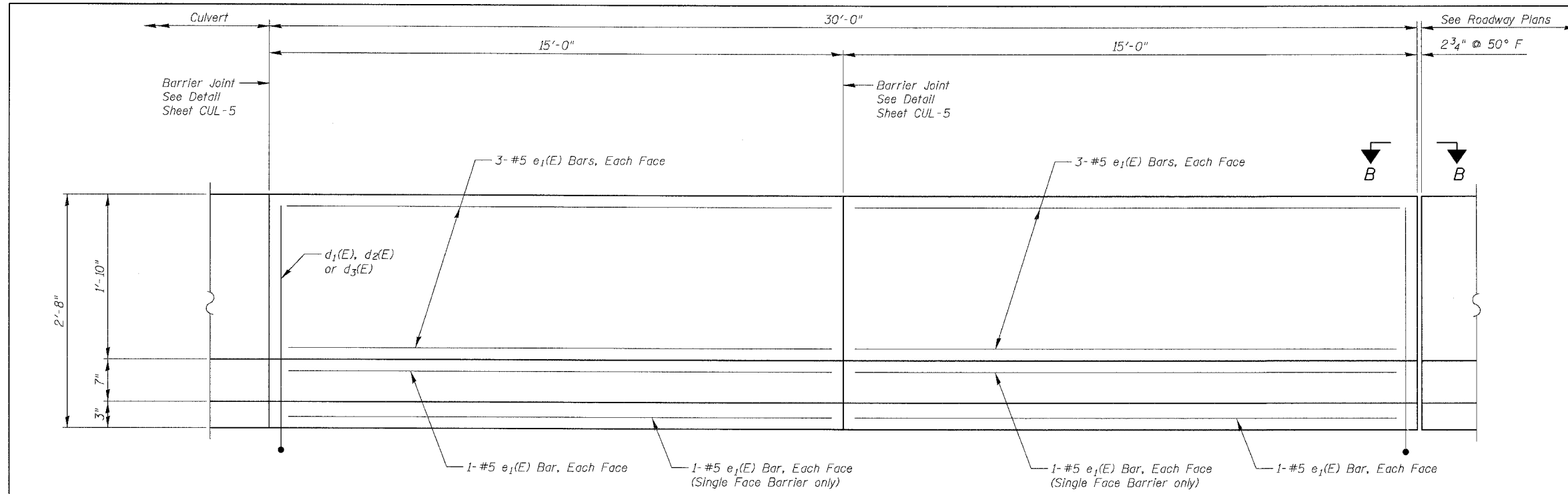


F.A.I.	SECTION	COUNTY	TOTAL SHEETS	SHEET NO.
94/90		COOK	565	432
STA.	TO STA.			
FED. ROAD DIST. NO.	ILLINOIS	FED. AID PROJECT		
62301		*(2021-922 PT2 ETC 2324.6-1P) R-10		

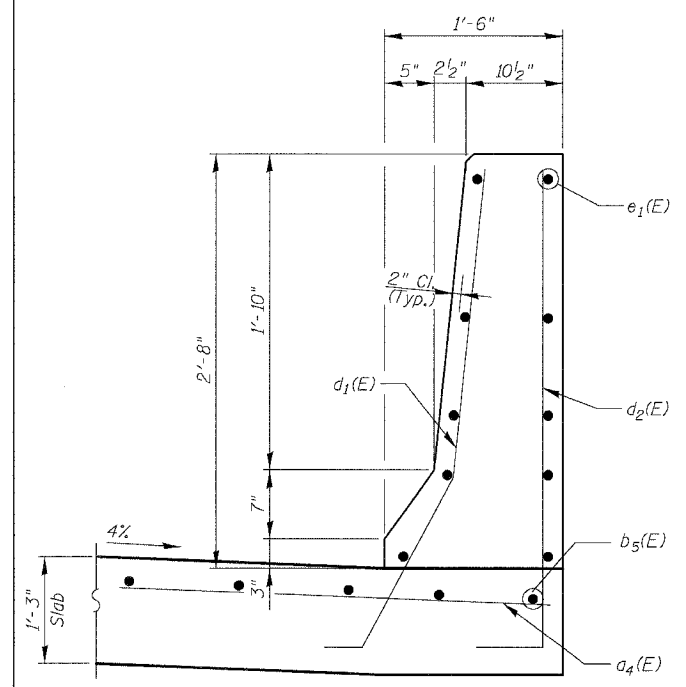
**APPROACH PAVEMENT  
BILL OF MATERIAL  
TOTAL FOR 2 APPROACH SLABS**

Bar	No.	Size	Length	Shape
$a_4(E)$	42	#6	4'-6"	—
$b_5(E)$	10	#5	25'-6"	—
$d(E)$	60	#6	1'-0"	—
$d_1(E)$	60	#5	4'-5"	L
$d_2(E)$	60	#5	4'-11"	L
$d_3(E)$	120	#5	3'-3"	L
$e_1(E)$	72	#5	14'-8"	—
Bridge Approach Pavement			Sq. Yd.	430
Concrete Superstructure			Cu. Yd.	18.1
Protective Coat			Sq. Yd.	74
Reinforcement Bars, Epoxy Coated			Pound	2,740

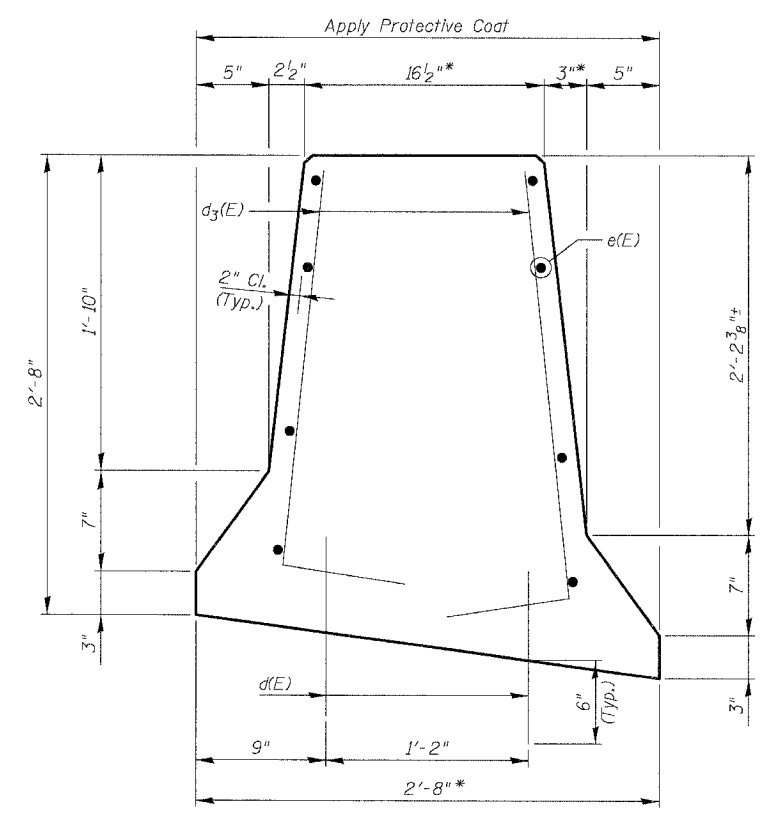
See IDOT Standard 420401 for typical approach pavement reinforcing and details. Additional reinforcement bars, and concrete for single & double face barrier not shown on Std. 420401 shall be paid for as Reinforcement Bars, Epoxy Coated, Bar Splicers, and Concrete Superstructure. Reinforcement bars designated (E) shall be epoxy coated. See Sheet CUL-4 for treatment of Approach Slab/Culvert Slab joint. Apply Protective Coat to top and inside face of single face barrier and to top and both faces of double face barrier. Epoxy grout #6d (E) bars in drilled holes with a depth of 6" in accordance with Art. 584 of the std. specs.



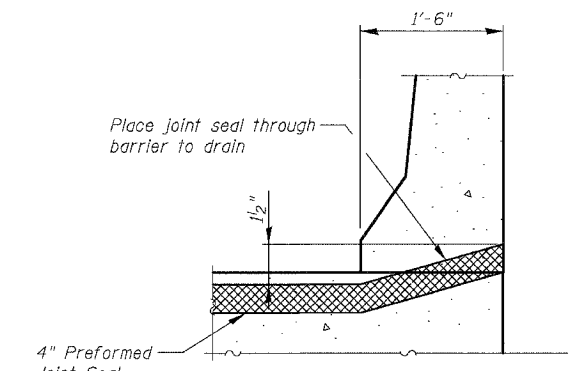
**INSIDE ELEVATION OF BARRIER ON APPROACH PAVEMENT**  
Single Face Shown, Double Face Similar as Noted



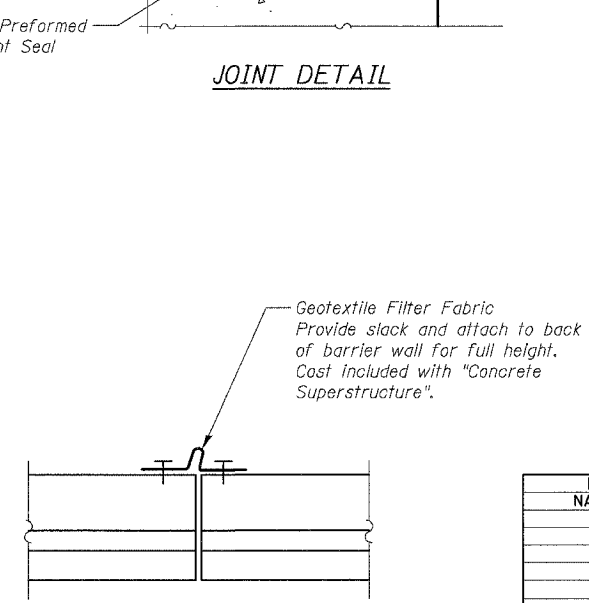
**SECTION THRU SINGLE FACE BARRIER**  
Note: Standard Approach Pavement reinforcement not shown for clarity



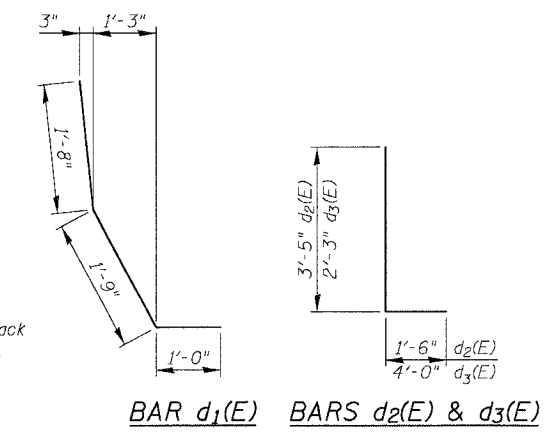
**SECTION THRU DOUBLE FACE BARRIER**  
\* Contractor can vary these dimensions to match adjacent roadway barrier if required.



**JOINT DETAIL**



**VIEW B-B**



**BAR  $d_1(E)$  BARS  $d_2(E)$  &  $d_3(E)$**

SHEET CUL-7 OF CUL-16

ILLINOIS DEPARTMENT OF TRANSPORTATION  
F.A.I. 94/90 (DAN RYAN EXPRESSWAY)  
GARFIELD BLVD TO 31ST STREET (NB LOCAL LANES)  
MWRD CULVERT, N. OF 39TH ST.,  
COOK COUNTY, S.N. 016-2625  
APPROACH SLAB DETAILS 2

REVISIONS	
NAME	DATE

SCALE: N.T.S.      DRAWN BY: MTR  
DATE: JUNE 9, 2006      CHECKED BY: BLU

BOWMAN, BARRETT & ASSOCIATES INC.  
CONSULTING ENGINEERS  
Chicago, Illinois  
312.228.0100  
www.bbainc.com

4/10/06 4:02:23 PM