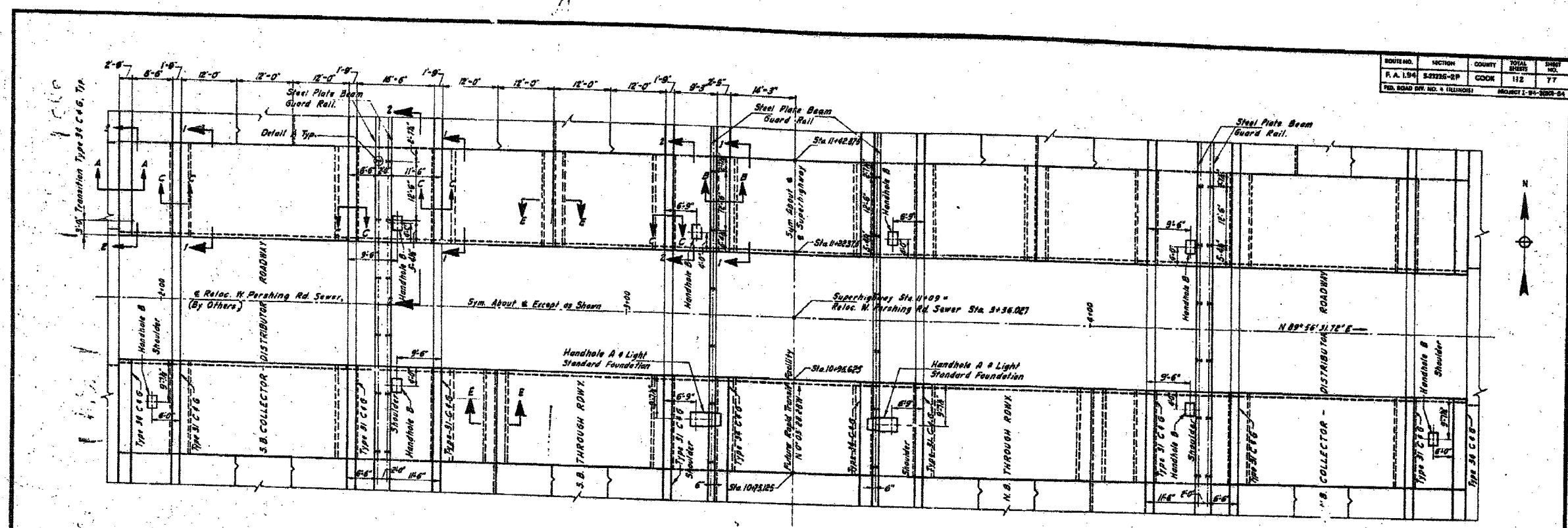
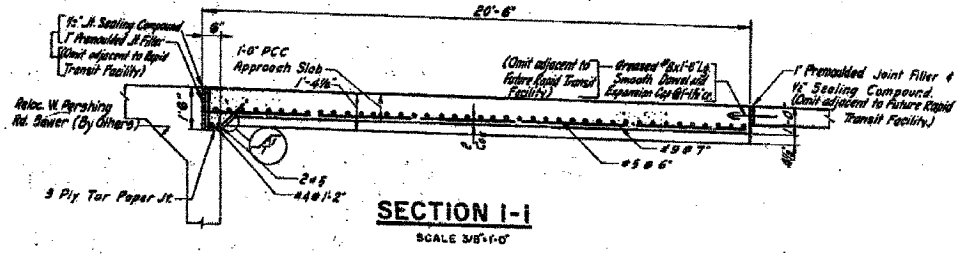


F.A.I.	SECTION	COUNTY	TOTAL SHEETS	SHEET NO.
94/90	*	COOK	565	439
STA.	TO STA.			
FED. ROAD DIST. NO.	ILLINOIS	FED. AID PROJECT		
62301	*I2021-922 PT2 ETC 2324.6-1P1	R-10		

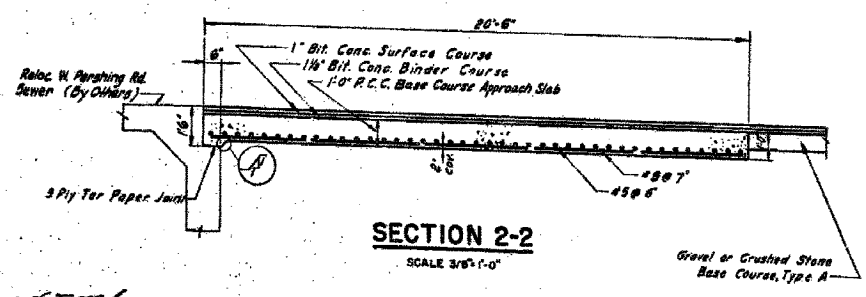
ROUTE NO.	SECTION	COUNTY	TOTAL SHEETS	SHEET NO.
F.A. 194	5-2323B-2P	COOK	112	77
FED. ROAD DIST. NO.	PROJECT I-94-2023-2A			



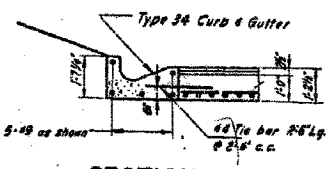
**APPROACH SLAB PLAN**  
SCALE: 1"=10'



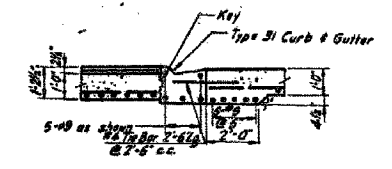
**SECTION I-I**  
SCALE: 3/8"=1'-0"



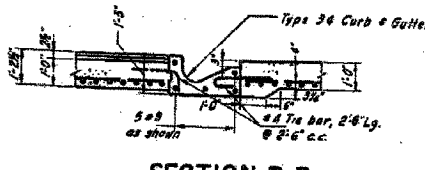
**SECTION 2-2**  
SCALE: 3/8"=1'-0"



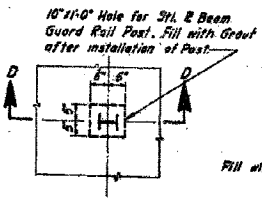
**SECTION A-A**  
SCALE: 3/8"=1'-0"



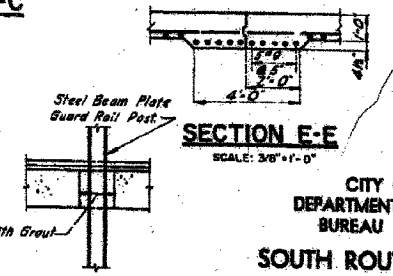
**SECTION C-C**  
SCALE: 3/8"=1'-0"



**SECTION B-B**  
SCALE: 3/8"=1'-0"



**DETAIL A**  
SCALE: 1/2"=1'-0"



**SECTION D-D**  
SCALE: 1/2"=1'-0"

- NOTES**
1. Reinforcement bar cover = 2" except as noted.
  2. For Details of Type 31 & Type 34 Curb & Gutter, see Sheet 6-76.
  3. For Details of Construction Joint, see Sheet 6-81.
  4. For Details of Handholes A & B, and Light Standard Foundation, see Sheet E-3.

CITY OF CHICAGO  
DEPARTMENT OF PUBLIC WORKS  
BUREAU OF ENGINEERING  
**SOUTH ROUTE SUPERHIGHWAY**  
SECTION 5-2323B-2P  
GRADING, PAVING & DRAINAGE, W. PERSHING RD. TO W. 35TH ST.  
**APPROACH SLAB**  
GOODKIND & O'DEA, INC.  
CONSULTING ENGINEERS, CHICAGO, ILL.  
SCALE AS NOTED SEPTEMBER 1961  
SHEET NO. 6-77 OF 112 SHEETS

BOWMAN, BARRETT & ASSOCIATES INC.  
CONSULTING ENGINEERS  
Chicago, Illinois  
312.228.0100  
www.bbainc.com

FOR INFORMATION ONLY

REVISIONS	
NAME	DATE

SHEET CUL-14 OF CUL-16  
ILLINOIS DEPARTMENT OF TRANSPORTATION  
F.A.I. 94/90 (DAN RYAN EXPRESSWAY)  
GARFIELD BLVD TO 31ST STREET (NB LOCAL LANES)  
MWRD CULVERT, N. OF 39TH ST.,  
COOK COUNTY, S.N. 016-2625  
EXISTING APPROACH SLAB DETAILS  
SCALE: N.T.S. DRAWN BY: BDC  
DATE: JUNE 9, 2006 CHECKED BY: BLU

6/17/2006 6:24:47 PM