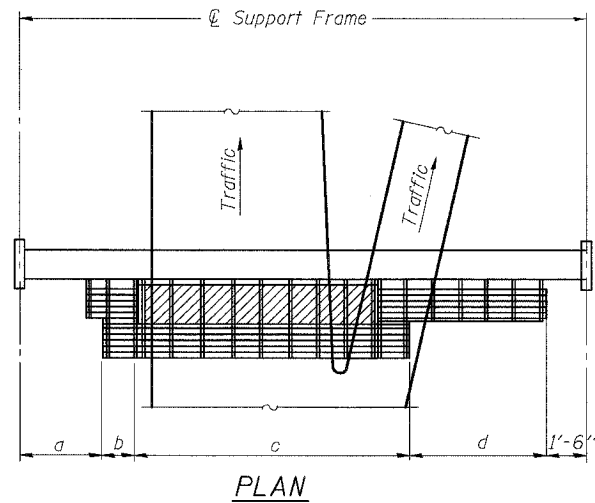


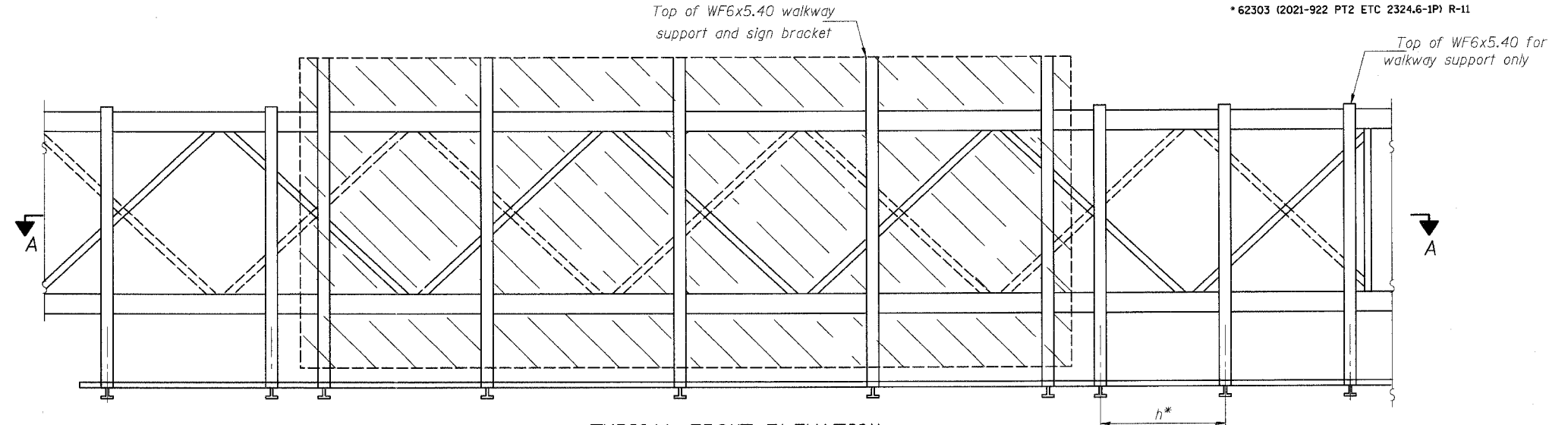
STATE OF ILLINOIS
DEPARTMENT OF TRANSPORTATION

ROUTE NO.	SECTION	COUNTY	TOTAL SHEETS	SHEET NO.	SHEET NO. ---
S. S. I. #	*	COOK	588	278	--- SHEETS
F. A. 90/94					
FED. ROAD DIST. NO. 7	ILLINOIS	FED. AID PROJECT			

*62303 (2021-922 PT2 ETC 2324.6-1P) R-11



PLAN
WALKWAY AND HANDRAIL SKETCH
(Road plan beneath truss varies)



TYPICAL FRONT ELEVATION

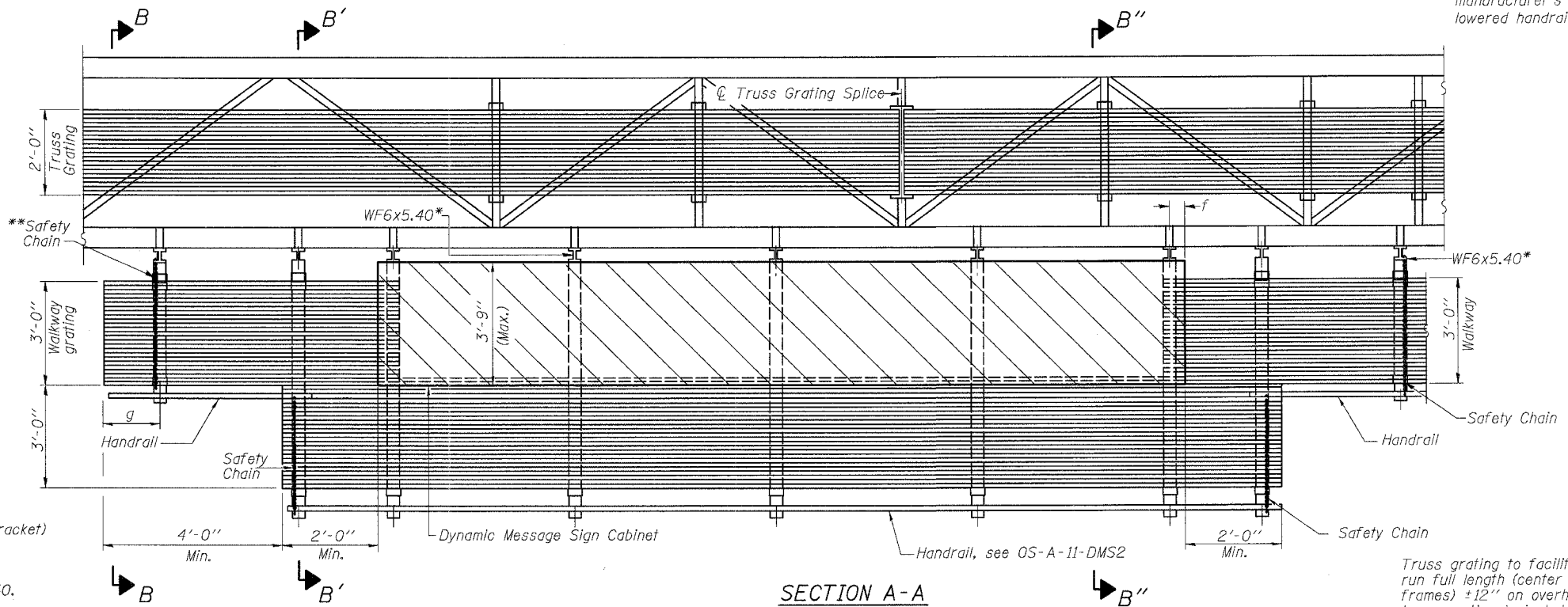
With handrail omitted for clarity.
For Section B-B, see Base Sheet OS-A-10-DMS2
For Section B'-B', and B''-B'', see Base Sheet OS-A-10a-DMS2

Bracket and grating dimensions are nominal and will vary based on actual DMS cabinet dimensions plus manufacturer's mounting devices, lowered handrail and DMS cabinet.

BRACKET TABLE

WF6x5.40 ASTM B308, Alloy 6061-T6		Number Brackets Required
Greater Than	Less Than or Equal To	
	8'-0"	2
8'-0"	14'-0"	3
14'-0"	20'-0"	4
20'-0"	26'-0"	5
26'-0"	32'-0"	6

Walkway and Truss Grating width dimensions are nominal and may vary $\pm 1/2$ " based on available standard widths.



SECTION A-A

Notes: *Space WF6x5.40 brackets for efficiency and within limits shown:

f = 12" maximum, 4" minimum (End of sign to ϕ of nearest bracket)

g = 12" maximum, 4" minimum (End of walkway grating to ϕ of nearest support bracket)

h = 6'-0" maximum (ϕ to ϕ or walkway support brackets, WF6x5.40)

Maximum DMS weight = 4000LBS

3'-9" maximum cabinet depth includes depth of cabinet plus connection to WF6x5.40.

**If walkway bracket at safety chain location is behind sign, add angle to bracket, see Alternate Safety Chain Attachment on Base Sheet OS-A-11-DMS2

For Section B-B and Grating Splice Details see Base Sheet OS-A-10-DMS2.

For Handrail Splice Details see Base Sheet OS-A-11-DMS2.

Handrail and walkway shall span a minimum of three brackets between splices and/or gap joints. Place all sign and walkway brackets as close to panel points as practical. Grating and handrail splices placed as needed.

Truss grating to facilitate inspection shall run full length (center to center of support frames) ± 12 " on overhead trusses. Cost of truss grating is included in "Overhead Sign Structure"
SGN-28

**OVERHEAD SIGN STRUCTURES
ALTERNATE ALUMINUM WALKWAY DETAILS
FOR DMS**

ILLINOIS DEPARTMENT OF TRANSPORTATION
F.A.I. 94/90 (DAN RYAN EXPRESSWAY)

GARFIELD BLVD TO 31st STREET (SB LOCAL LANES)

**OVERHEAD SIGN STRUCTURES
(SPAN)**

DESIGNED	AC
CHECKED	AS
DRAWN	RV
CHECKED	MSA

EXAMINED	19
PASSED	ENGINEER OF STRUCTURAL SERVICES
	ENGINEER OF BRIDGES AND STRUCTURES

NUMBER	REVISION	DATE
▲	ADDENDUM 2	8/04/06

Structure Number	Station	a	b	c	d	Walkway Grating and Handrail Lengths
ISO161094R055.64	3586+50	16'-10"	3'-0"	29'-1"	32'-7"	76'-7 1/2"
ISO161094R057.8	3475+92.44	4'-0"	4'-0"	30'-1"	8'-5 1/16"	44'-0"

OS-A-9-DMS2 1/7/2005