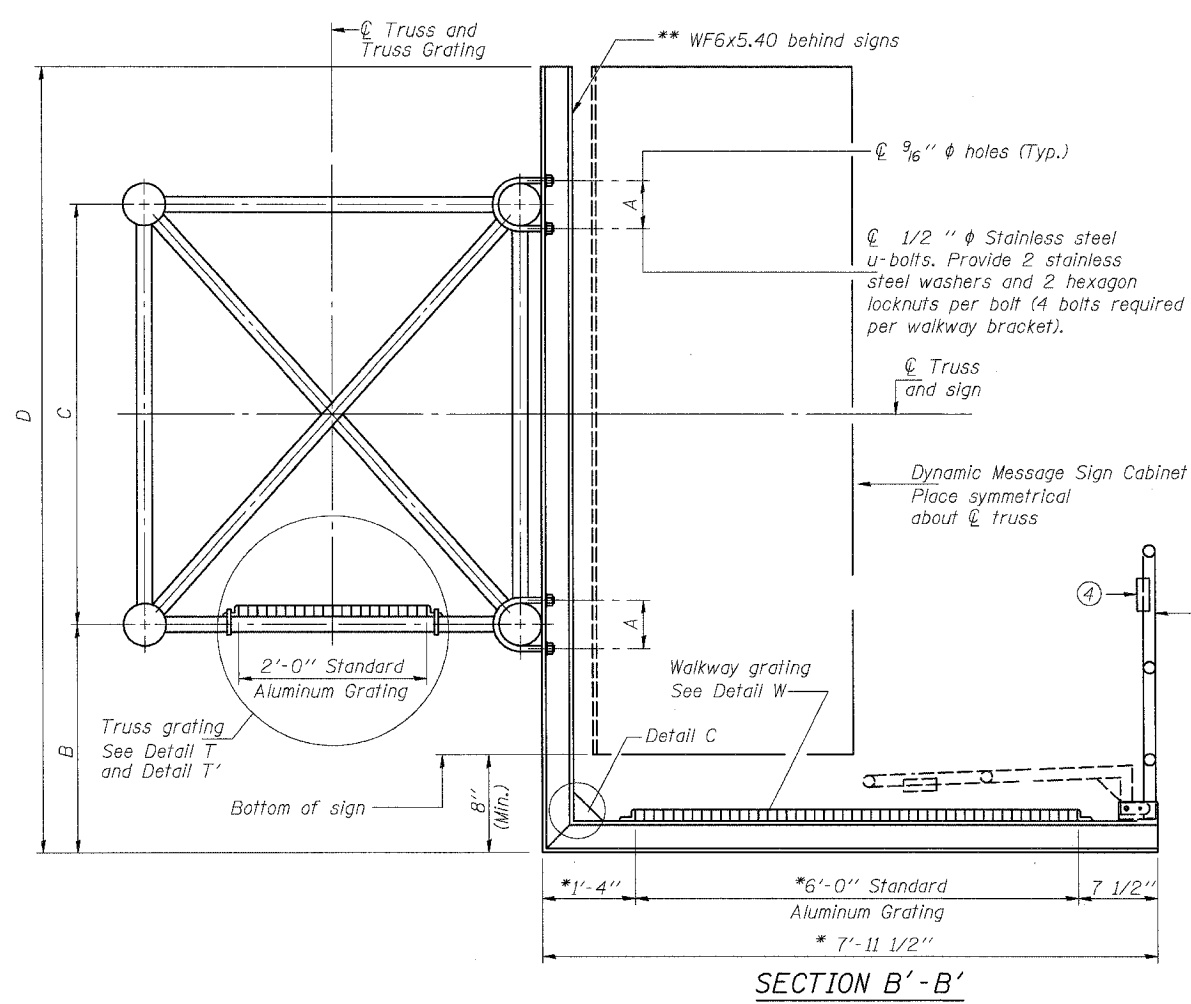


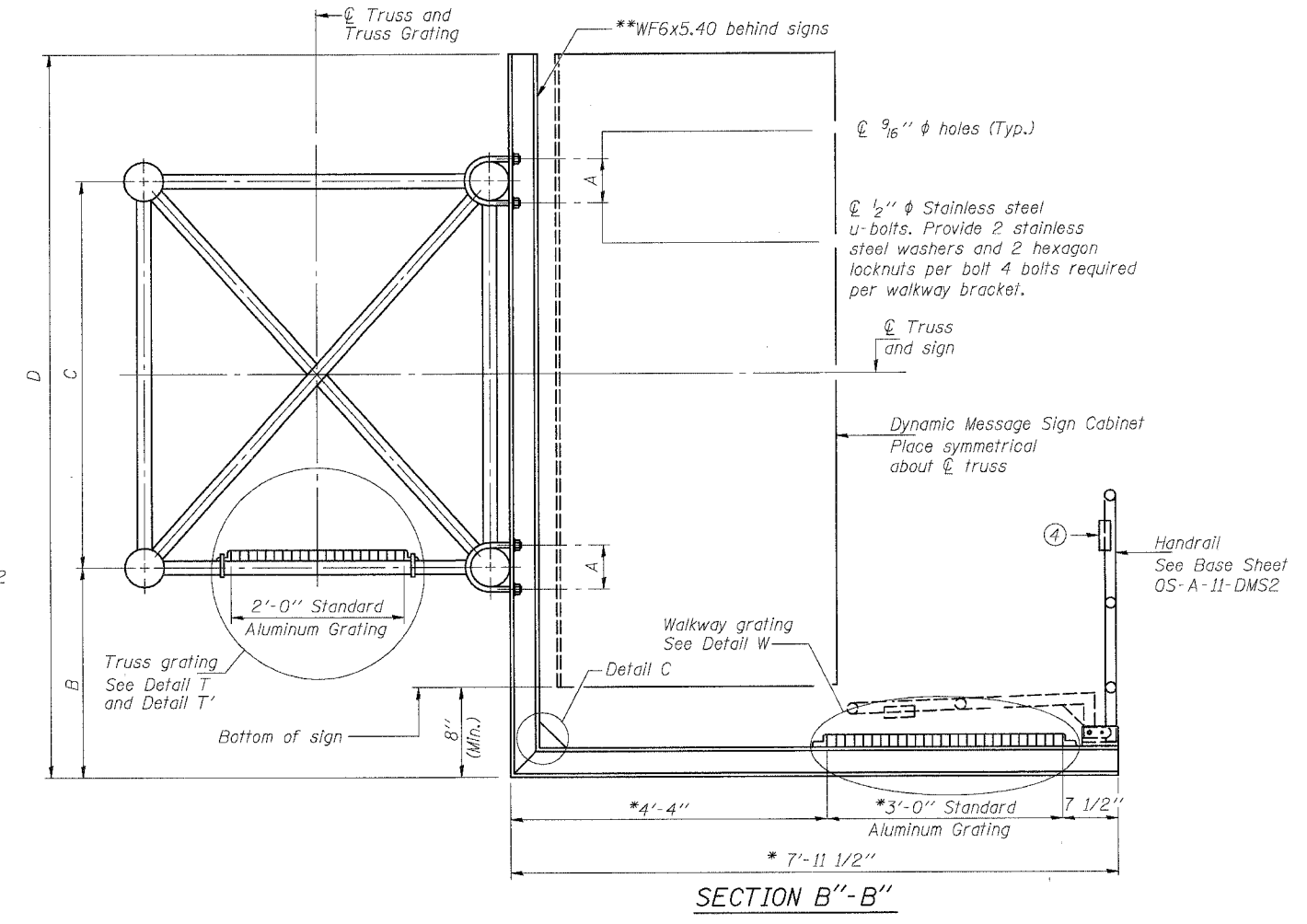
STATE OF ILLINOIS
DEPARTMENT OF TRANSPORTATION

ROUTE NO.	SECTION	COUNTY	TOTAL SHEETS	SHEET NO.	SHEET NO. ---
S.B.I. #	*	COOK	588	280	--- SHEETS
P.A. 99/94					

* 62303 (2021-922 PT2 ETC 2324.6-1P) R-11



SECTION B'-B'



SECTION B''-B''

* Bracket and grating dimensions are nominal and will vary based on actual DMS cabinet dimensions plus manufacturer's mounting devices, and providing clearance between the lowered handrail and DMS cabinet.

** Cabinet manufacturer must design and supply hardware for connection of cabinet to WF6's. Bolts must be stainless steel or hot dip galvanized high strength per IDOT specifications.

Note:
For dimensions "A" to "D" and remaining details, see sheet OS-A-10-DMS2

DESIGNED	AC	19
CHECKED	AS	EXAMINED
DRAWN	RV	PASSED
CHECKED	MSA	ENGINEER OF BRIDGES AND STRUCTURES

NUMBER	REVISION	DATE
△	ADDENDUM 2	8/04/06

SGN-30

**OVERHEAD SIGN STRUCTURES
ALTERNATE ALUMINUM WALKWAY DETAILS
FOR DMS**

ILLINOIS DEPARTMENT OF TRANSPORTATION
F.A.I. 94/90 (DAN RYAN EXPRESSWAY)
GARFIELD BLVD TO 31st STREET (SB LOCAL LANES)
**OVERHEAD SIGN STRUCTURES
(SPAN)**