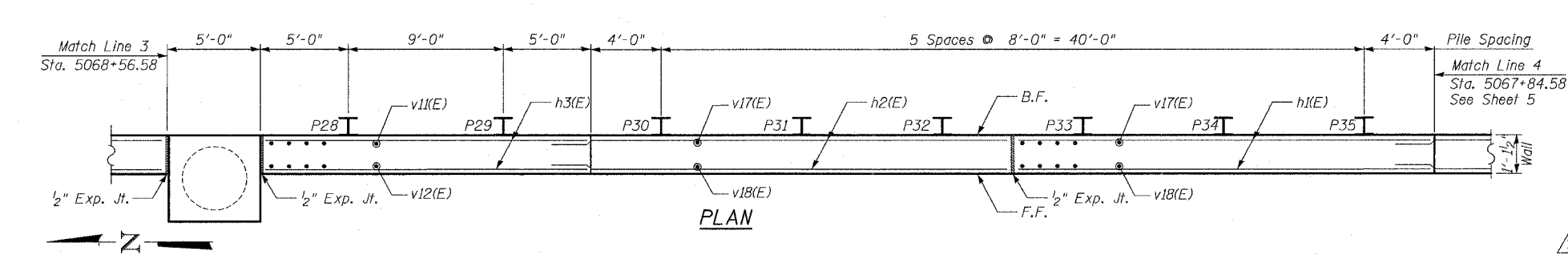
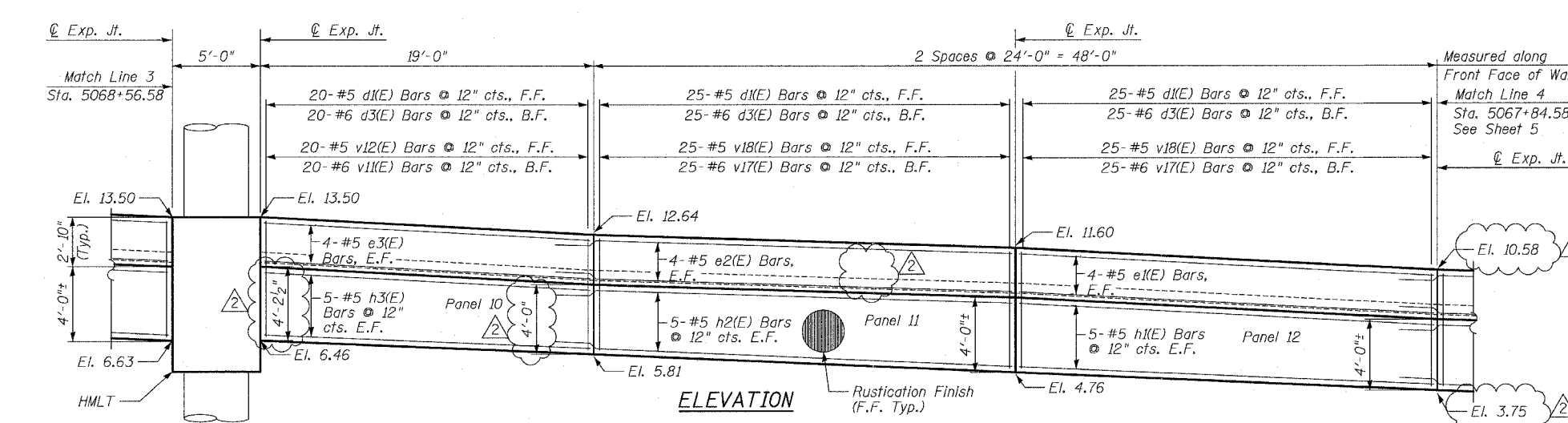
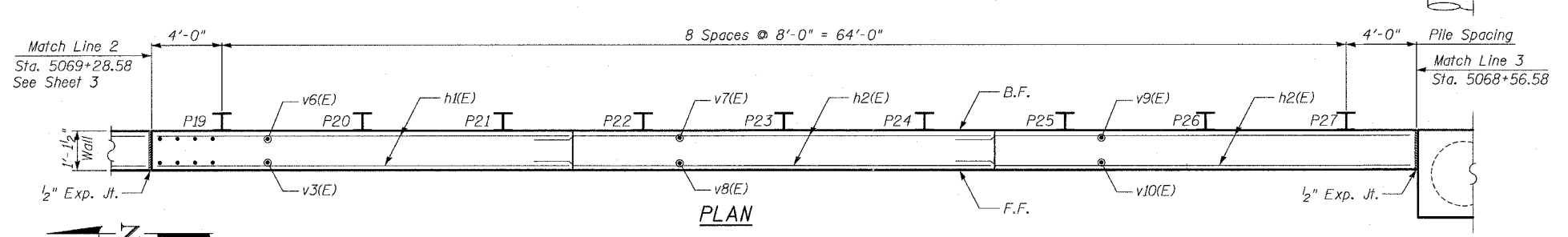
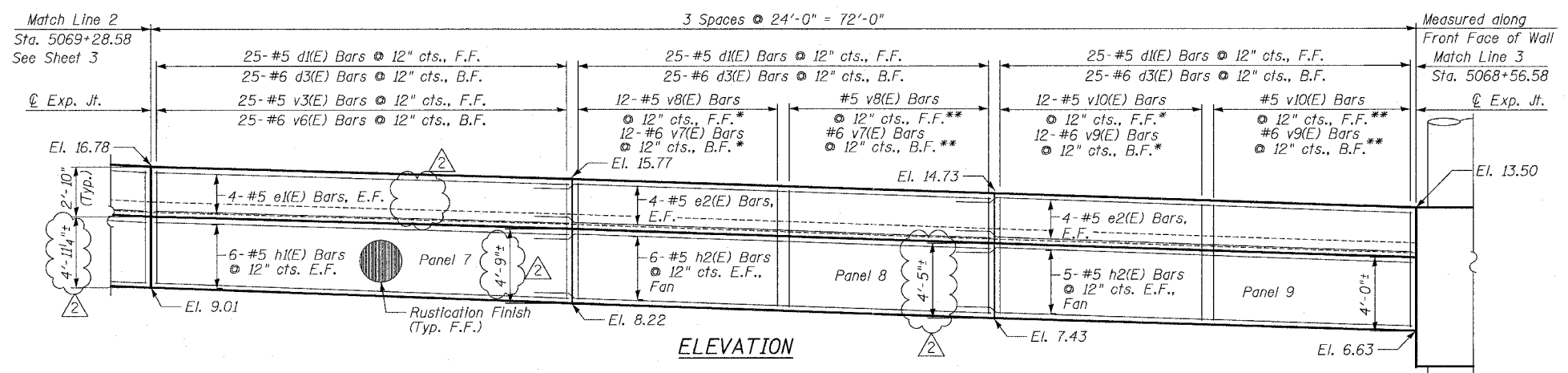


F.A.I.	SECTION	COUNTY	TOTAL SHEETS	SHEET NO.
94/90		COOK	588	400
STA.	TO STA.			
FED. ROAD DIST. NO.	ILLINOIS	FED. AID PROJECT		
62303	*2021-922 PT2 ETC	2324.6-1P1	R-11	



- NOTES:**
- Facing in Plan Views is scaled 1:2 on an X:Y scale to show reinforcement.
  - See Sheet 9 for reinforcing bar clearances.
  - Stations given are @ Ramp 47A.
  - See Sheets 7A and 7B for High Mast Light Tower Details.
- F.F. - denotes Front Face  
B.F. - denotes Back Face  
E.F. - denotes Each Face

**MIN BAR LAP**

#5 - 2'-2"  
#6 - 2'-7"

\* Order bars full length and cut as indicated in cutting diagram. Bend after cutting as required.  
\*\* Remaining Bars from Cutting Diagram

BOWMAN, BARRETT & ASSOCIATES INC.  
CONSULTING ENGINEERS  
Chicago, Illinois  
312.228.0100  
www.bbandainc.com

REVISIONS	
NAME	DATE
REVISED	6/21/06
ADDENDUM 2	8/04/06

SHEET 4 OF 15

ILLINOIS DEPARTMENT OF TRANSPORTATION  
F.A.I. 94/90 (DAN RYAN EXPRESSWAY)  
GARFIELD BLVD TO 31ST STREET (SB LOCAL LANES)

RETAINING WALL S-47N-R  
WALL DETAILS 2

SCALE: NTS  
DATE: JUNE 9, 2006

DRAWN BY: MTR  
CHECKED BY: BLU