

**BILL OF MATERIAL**

Bar	No.	Size	Length	Shape
d1(E)	1060	#5/2	4'-7"	—
d2(E)	13	#6	17'-2"	—
d3(E)	13	#6	15'-3"	—
d4(E)	13	#6	13'-6"	—
d5(E)	13	#6	11'-10"	—
d6(E)	224	#6	5'-5"	—
d7(E)	272	#5	2'-4"	—
e1(E)	16	#5	23'-3"	—
e2(E)	56	#5	29'-8"	—
e3(E)	88	#5	32'-2"	—
e4(E)	48	#5	27'-2"	—
e5(E)	8	#5	27'-0"	—
e6(E)	16	#5	26'-2"	—
e7(E)	48	#5	24'-8"	—
e8(E)	8	#5	35'-5"	—
e9(E)	8	#5	32'-11"	—
h1(E)	20/2	#5	23'-3"	—
h2(E)	168	#5	29'-8"	—
h3(E)	266	#5	32'-2"	—
h4(E)	66	#5	27'-2"	—
h5(E)	22	#5	27'-0"	—
h6(E)	40	#5	26'-2"	—
h7(E)	52	#5	24'-8"	—
h8(E)	6	#5	35'-5"	—
h9(E)	6	#5	32'-11"	—
v1(E)	75	#5	3'-8"	—
v2(E)	75	#6	6'-6"	—
v3(E)	15	#5	8'-2"	—
v4(E)	15	#6	13'-10"	—
v5(E)	15	#5	10'-4"	—
v6(E)	15	#6	16'-0"	—
v7(E)	15	#5	13'-1"	—
v8(E)	15	#6	18'-9"	—
v9(E)	15	#5	15'-11"	—
v10(E)	15	#6	21'-7"	—
v11(E)	15	#5	18'-9"	—
v12(E)	15	#5	24'-5"	—
v13(E)	15	#5	21'-7"	—
v14(E)	15	#5	27'-3"	—
v15(E)	15	#5	24'-1"	—
v16(E)	15	#5	29'-9"	—
v17(E)	15	#5	26'-1"	—
v18(E)	15	#5	31'-9"	—
v19(E)	15	#5	27'-5"	—
v20(E)	15	#5	33'-1"	—
v21(E)	15	#5	28'-3"	—
v22(E)	15	#5	33'-11"	—
v23(E)	15	#5	28'-10"	—
v24(E)	15	#5	34'-6"	—
v25(E)	15	#5	28'-8"	—
v26(E)	15	#5	34'-4"	—
v27(E)	15	#5	28'-0"	—
v28(E)	15	#5	33'-8"	—
v29(E)	15	#5	27'-4"	—
v30(E)	15	#5	33'-0"	—
v31(E)	15	#5	26'-1"	—
v32(E)	15	#5	31'-9"	—
v33(E)	13	#5	24'-2"	—
v34(E)	13	#5	29'-10"	—
v35(E)	15	#5	22'-8"	—
v36(E)	15	#5	28'-4"	—
v37(E)	15	#5	21'-1"	—
v38(E)	15	#5	26'-9"	—
v39(E)	14	#5	19'-3"	—
v40(E)	14	#6	24'-11"	—
v41(E)	12	#5	17'-7"	—
v42(E)	12	#6	23'-3"	—
v43(E)	12	#5	15'-9"	—
v44(E)	12	#6	21'-5"	—
v45(E)	13	#5	13'-7"	—
v46(E)	13	#6	19'-3"	—
v47(E)	13	#5	9'-7"	—
v48(E)	13	#5	7'-9"	—
v49(E)	13	#5	6'-0"	—
v50(E)	13	#5	4'-3"	—
v51(E)	224	#5	1'-8"	—

Bar	No.	Size	Length	Shape
v30(E)	15	#6	33'-0"	—
v31(E)	15	#5	26'-1"	—
v32(E)	15	#6	31'-9"	—
v33(E)	13	#5	24'-2"	—
v34(E)	13	#6	29'-10"	—
v35(E)	15	#5	22'-8"	—
v36(E)	15	#6	28'-4"	—
v37(E)	15	#5	21'-1"	—
v38(E)	15	#6	26'-9"	—
v39(E)	14	#5	19'-3"	—
v40(E)	14	#6	24'-11"	—
v41(E)	12	#5	17'-7"	—
v42(E)	12	#6	23'-3"	—
v43(E)	12	#5	15'-9"	—
v44(E)	12	#6	21'-5"	—
v45(E)	13	#5	13'-7"	—
v46(E)	13	#6	19'-3"	—
v47(E)	13	#5	9'-7"	—
v48(E)	13	#5	7'-9"	—
v49(E)	13	#5	6'-0"	—
v50(E)	13	#5	4'-3"	—
v51(E)	224	#5	1'-8"	—

Item	Quantity	Unit
Reinforcement Bars, Epoxy Coated	58,690	Pound
Concrete Structures	322.7	Cu. Yd.
Concrete Superstructure	130.7	Cu. Yd.
Chain Link Fence, 42" Attached to Structure (Special)	1,000	Foot
Chain Link Gate Assembly (Special)	1	Each
Rustication Finish	9,125	Sq. Ft.
Protective Coat	1,339	Sq. Yd.

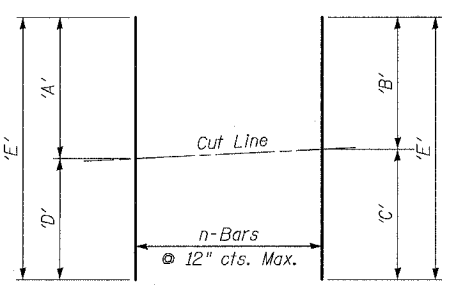
**NOTES**

- Build wall parallel to @ Wentworth Ave. & at constant offset beyond Pt. 12 U.N.O. (Chords)
- Utilize Back Face of existing wall as W.P. for top modification.
- Pts 8A, 9A, etc. are on existing wall to be removed.

SHEET 12 OF 24

ILLINOIS DEPARTMENT OF TRANSPORTATION  
 F.A.I. 94/90 (DAN RYAN EXPRESSWAY)  
 GARFIELD BLVD TO 31ST STREET (SB LOCAL LANES)  
 COOK COUNTY  
 STA. 3532+90.57 TO STA. 3543+57.42  
 RETAINING WALL S-45S-F  
 BILL OF MATERIAL  
 S.N. 016-W978  
 SCALE: NTS  
 DATE: JUNE 9, 2006  
 DRAWN BY: MTR  
 CHECKED BY: BLU

REVISIONS		
NO.	NAME	DATE
2	ADDENDUM 2	8/04/06
1	REVISION	6/14/06



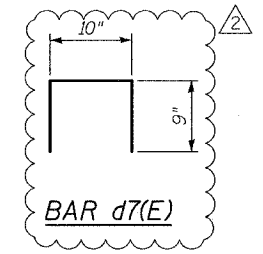
**\* BAR CUTTING DIAGRAM**

\* Order bars d2(E) thru d5(E) and v3(E) thru v50(E) full length, cut as shown and use remainder where indicated.

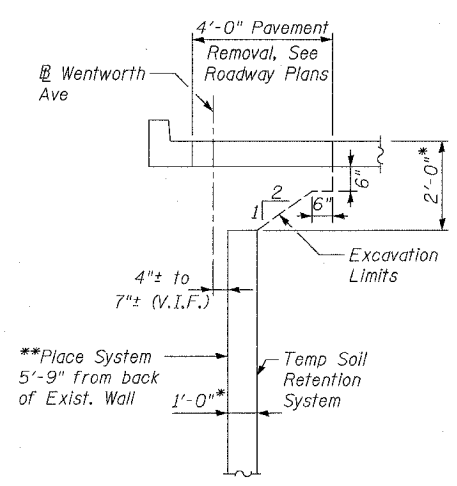
**TABLE OF DIMENSIONS**

Bar	'A'	'B'	'C'	'D'	'E'	n
d2(E)	9'-1"	8'-7"	8'-7"	8'-1"	17'-2"	13
d3(E)	8'-1"	7'-8"	7'-7"	7'-2"	15'-3"	13
d4(E)	7'-2"	6'-9"	6'-9"	6'-4"	13'-6"	13
d5(E)	6'-5"	5'-11"	5'-11"	5'-5"	11'-10"	13
v3(E)	3'-8"	4'-2"	4'-1"	4'-6"	8'-2"	15
v4(E)	6'-6"	6'-11"	6'-11"	7'-4"	13'-10"	15
v5(E)	4'-6"	5'-2"	5'-2"	5'-10"	10'-4"	15
v6(E)	7'-4"	8'-0"	8'-0"	8'-8"	16'-0"	15
v7(E)	5'-10"	6'-6"	6'-7"	7'-3"	13'-1"	15
v8(E)	8'-8"	9'-4"	9'-5"	10'-1"	18'-9"	15
v9(E)	7'-3"	7'-11"	8'-0"	8'-8"	15'-11"	15
v10(E)	10'-1"	10'-9"	10'-10"	11'-6"	21'-7"	15
v11(E)	8'-8"	9'-4"	9'-5"	10'-1"	18'-9"	15
v12(E)	11'-6"	12'-2"	12'-3"	12'-11"	24'-5"	15
v13(E)	10'-1"	10'-9"	10'-10"	11'-6"	21'-7"	15
v14(E)	12'-11"	13'-7"	13'-8"	14'-4"	27'-3"	15
v15(E)	11'-6"	12'-0"	12'-1"	12'-7"	24'-1"	15
v16(E)	14'-4"	14'-10"	14'-11"	15'-5"	29'-9"	15
v17(E)	12'-7"	13'-0"	13'-1"	13'-6"	26'-1"	15
v18(E)	15'-5"	15'-10"	15'-11"	16'-4"	31'-9"	15
v19(E)	13'-6"	13'-8"	13'-9"	13'-11"	27'-5"	15
v20(E)	16'-4"	16'-6"	16'-7"	16'-9"	33'-1"	15
v21(E)	13'-11"	14'-1"	14'-2"	14'-4"	28'-3"	15
v22(E)	16'-9"	16'-11"	17'-0"	17'-2"	33'-11"	15
v23(E)	14'-4"	14'-5"	14'-5"	14'-6"	28'-10"	15
v24(E)	17'-2"	17'-3"	17'-3"	17'-4"	34'-6"	15
v25(E)	14'-6"	14'-4"	14'-4"	14'-2"	28'-8"	15
v26(E)	17'-4"	17'-2"	17'-2"	17'-0"	34'-4"	15
v27(E)	14'-2"	14'-0"	14'-0"	13'-10"	28'-0"	15
v28(E)	17'-0"	16'-10"	16'-10"	16'-8"	33'-8"	15
v29(E)	13'-10"	13'-8"	13'-8"	13'-6"	27'-4"	15
v30(E)	16'-8"	16'-6"	16'-6"	16'-4"	33'-0"	15
v31(E)	13'-6"	13'-1"	13'-0"	12'-7"	26'-1"	15
v32(E)	16'-4"	15'-11"	15'-10"	15'-5"	31'-9"	15
v33(E)	12'-6"	12'-1"	12'-1"	11'-8"	24'-2"	13
v34(E)	15'-4"	14'-11"	14'-11"	14'-6"	29'-10"	13
v35(E)	11'-8"	11'-4"	11'-4"	11'-0"	22'-8"	15
v36(E)	14'-6"	14'-2"	14'-2"	13'-10"	28'-4"	15
v37(E)	11'-0"	10'-7"	10'-6"	10'-1"	21'-1"	15
v38(E)	13'-10"	13'-5"	13'-4"	12'-11"	26'-9"	15
v39(E)	10'-1"	9'-8"	9'-7"	9'-2"	19'-3"	14
v40(E)	12'-11"	12'-6"	12'-5"	12'-0"	24'-11"	14
v41(E)	9'-2"	8'-10"	8'-9"	8'-5"	17'-7"	12
v42(E)	12'-0"	11'-8"	11'-7"	11'-3"	23'-3"	12
v43(E)	8'-5"	7'-11"	7'-10"	7'-4"	15'-9"	12
v44(E)	11'-3"	10'-9"	10'-8"	10'-2"	21'-5"	12
v45(E)	7'-4"	6'-10"	6'-9"	6'-3"	13'-7"	13
v46(E)	10'-2"	9'-8"	9'-7"	9'-1"	19'-3"	13
v47(E)	5'-3"	4'-10"	4'-9"	4'-4"	9'-7"	13
v48(E)	4'-4"	3'-11"	3'-10"	3'-5"	7'-9"	13
v49(E)	3'-5"	3'-0"	3'-0"	2'-7"	6'-0"	13
v50(E)	2'-7"	2'-2"	2'-1"	1'-8"	4'-3"	13

**BAR d1(E)**



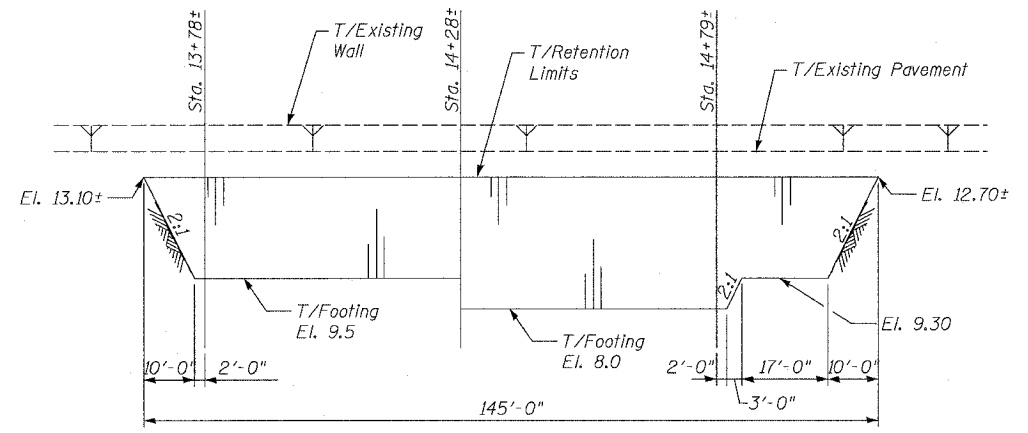
**BAR d7(E)**



**SECTION X-X**

\*\* Contractor should be aware of existing footing. See removal cross sections.

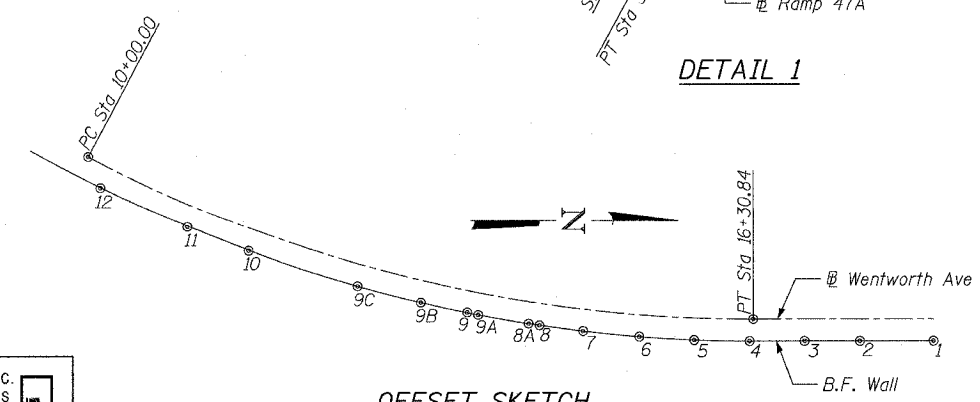
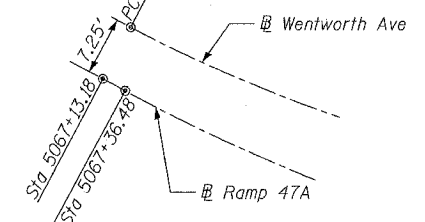
\* Assumed dimensions. Contractor shall adjust as necessary based on actual design.



**TEMPORARY SOIL RETENTION SYSTEM**

A cantilevered sheet piling design does not appear feasible and additional members or other retention systems may be necessary. The Contractor shall submit a temporary soil retention system design including plan details and calculations for review and acceptance by the Engineer.

**DETAIL 1**



**OFFSET SKETCH**  
Points Shown are Wall Joints

BOWMAN, BARRETT & ASSOCIATES INC.  
 CONSULTING ENGINEERS  
 Chicago, Illinois  
 312.228.0100  
 www.bbainc.com

8/10/2006 3:08:28 PM