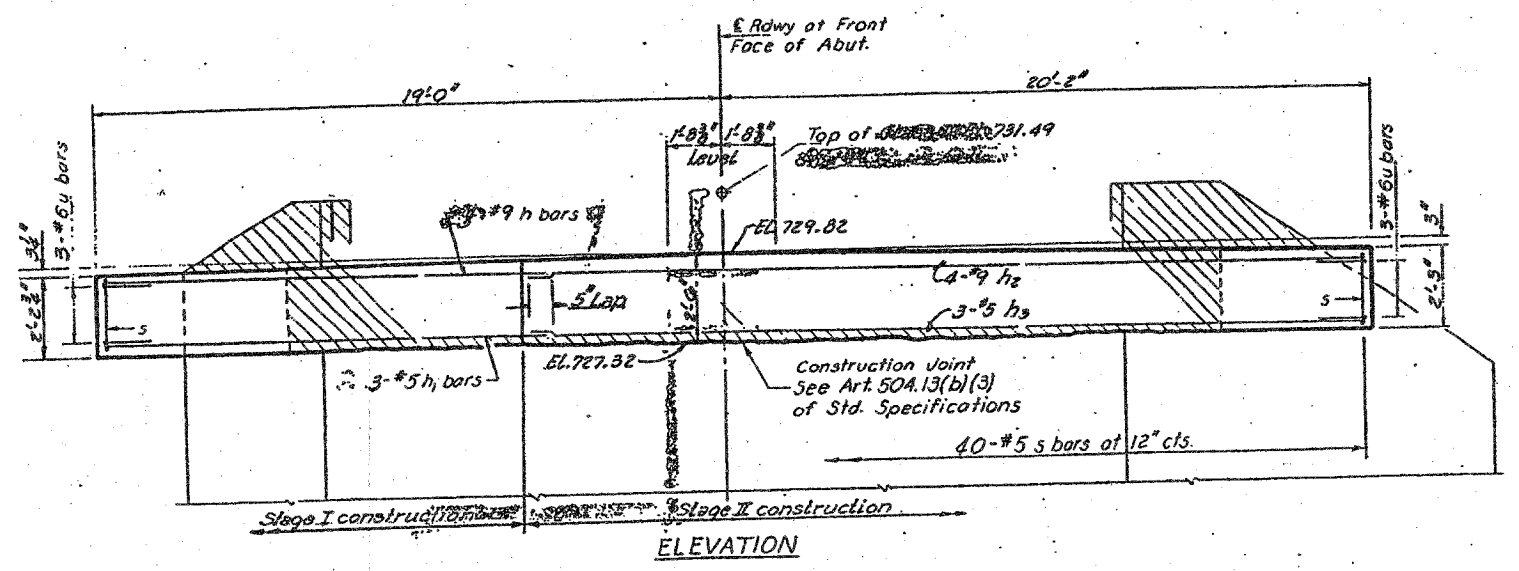
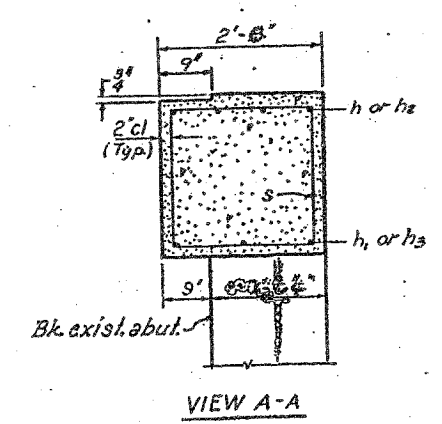
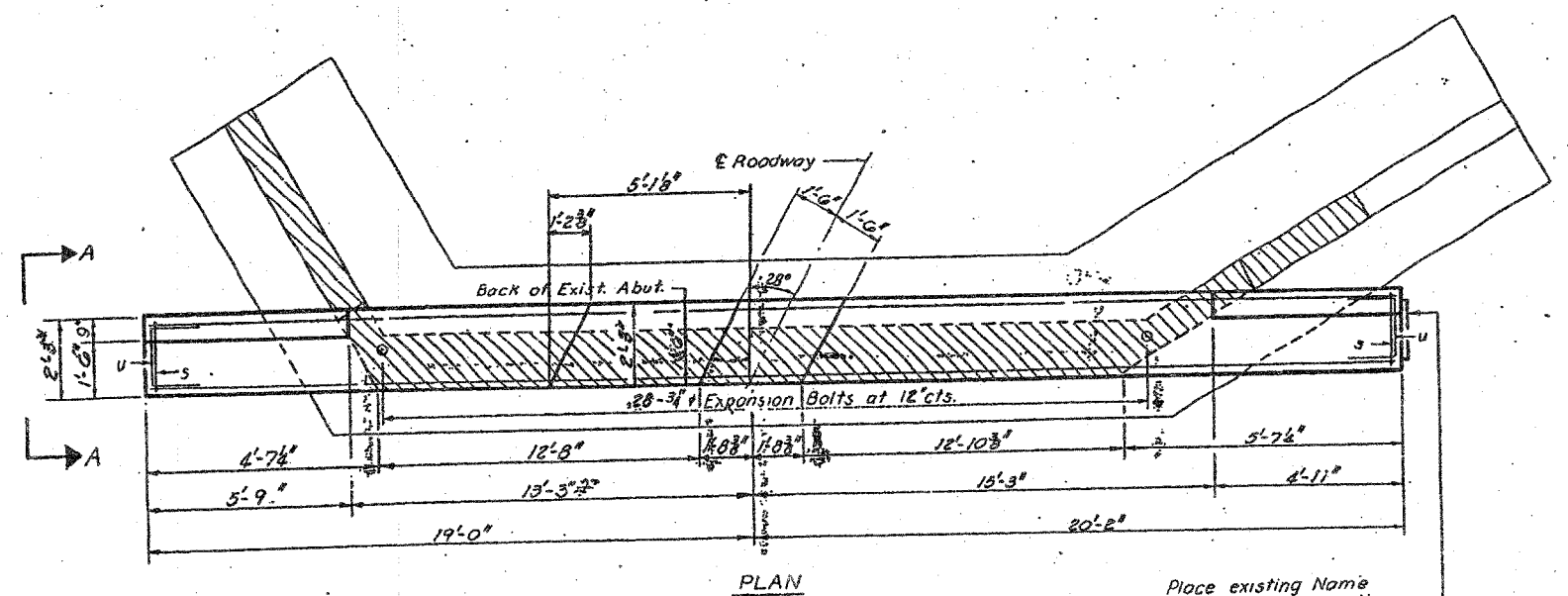


PROJECT NO.	78	SECTION	WINNEBAGO	SHEET NO.	5
DATE	11/28	BY	WINNEBAGO	NO.	7
SHEET NO. 5		6 SHEETS			

STATE OF ILLINOIS



FOR INFORMATION ONLY

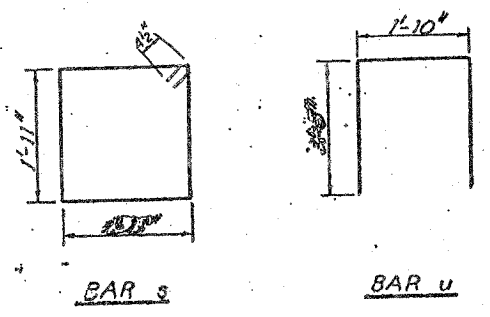


BILL OF MATERIAL

Bar	No.	Size	Length	Shape
h	4	#9	14'-3"	—
h <sub>2</sub>	3	#5	14'-3"	—
h <sub>3</sub>	4	#9	23'-9"	—
h <sub>3</sub>	3	#5	23'-9"	—
s	40	#5	8'-5"	□
u	6	#6	7'-10"	□
Class X Concrete			Cu. Yds.	7.4
Reinforcement Bars			Lbs.	1060
Expansion Bolts			Each.	28
Concrete Removal			Cu. Yds.	4.9

Notes:  
 Hatched area indicates Concrete Removal. Reinforcement extending into removed area shall be cleaned and incorporated into the new construction.  
 Expansion Bolts shall be anchored in sound concrete.  
 All edges shall have standard 3/4 chamfers

DESIGNED *Wm. McLaughlin*  
 CHECKED *M. J. ...*  
 EXAMINED *...*  
 PASSED *...*  
 APR 27 1971



WEST ABUTMENT  
 S.B.T. RT. 26 SEC. 115 BR.  
 WINNEBAGO COUNTY  
 STATION 70+55