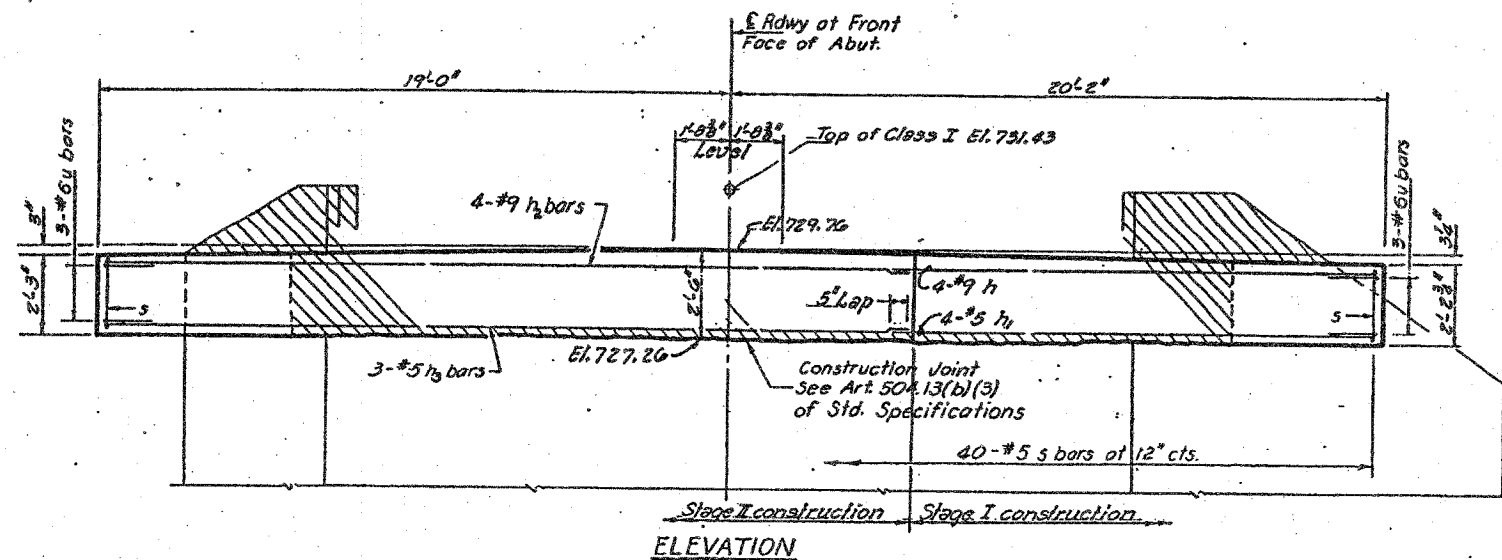
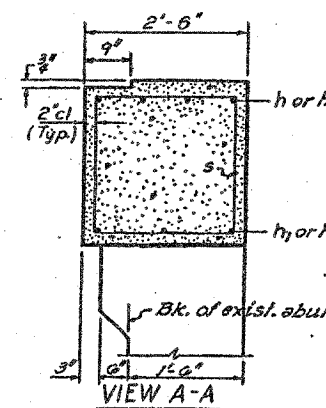
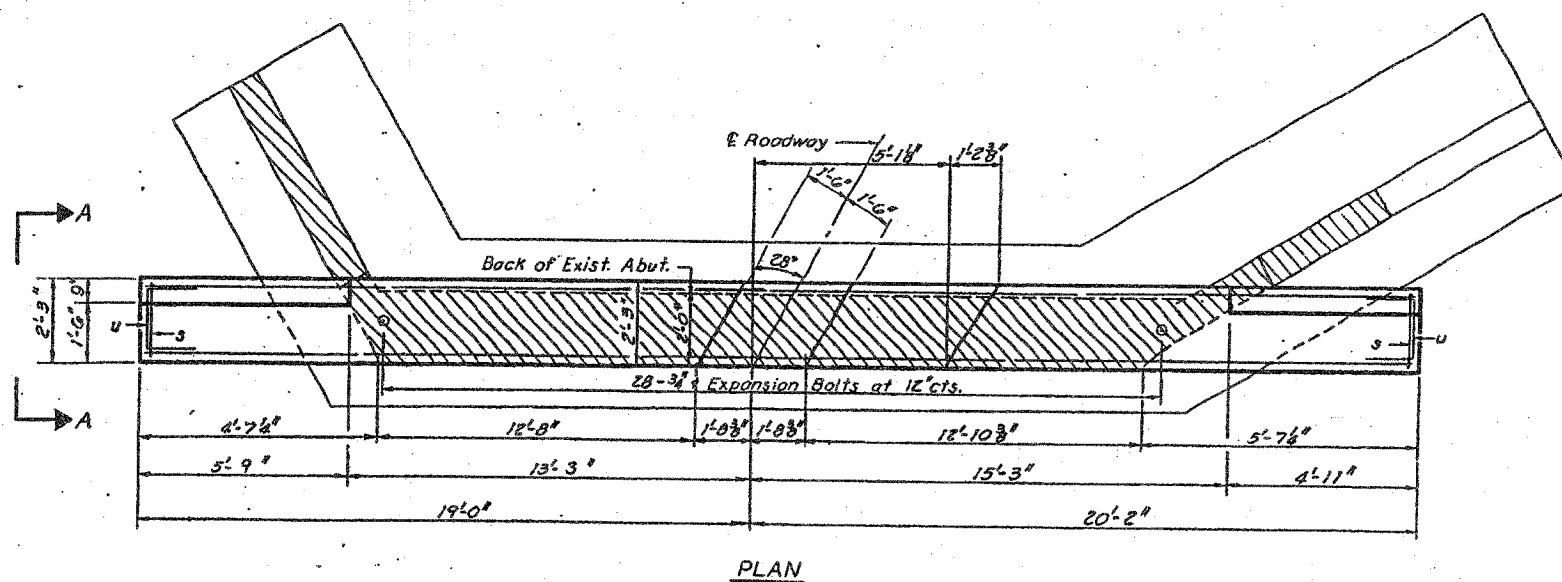


STATE OF ILLINOIS

PROJECT NO.	73	SUBJECT	IBBR WINNEBAGO	DATE	8	SHEET NO.	6
DATE	73	BY	WINNEBAGO	NO.	8	TOTAL SHEETS	6



FOR INFORMATION ONLY

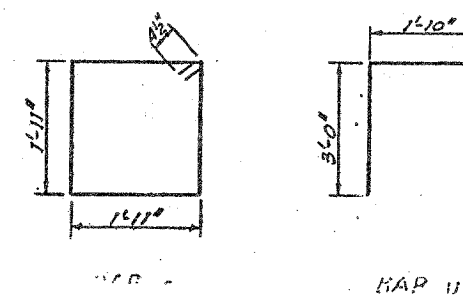


**BILL OF MATERIAL**

Bar	No.	Size	Length	Shape
h	4	#9	14'-3"	—
h1	3	#5	14'-3"	—
h2	4	#9	23'-9"	—
h3	3	#5	23'-9"	—
s	40	#5	8'-5"	□
u	6	#6	7'-10"	□
Class X Concrete			Cu. Yds.	7.4
Reinforcement Bars			Lbs.	1060
Expansion Bolts			Each	28
Concrete Removal			Cu. Yds.	5.5

Notes:  
 Hatched area indicates Concrete Removal. Reinforcement extending into removed area shall be cleaned and incorporated into the new construction.  
 Expansion Bolts shall be anchored in sound concrete.  
 All edges shall have standard 3/4 chamfers.

DESIGNED: *John McCon...*  
 CHECKED: *...*  
 EXAMINED: *...*  
 PASSED: *...*  
 DATE: *April 27 1971*



**EAST ABUTMENT**

WINNEBAGO COUNTY ILLINOIS