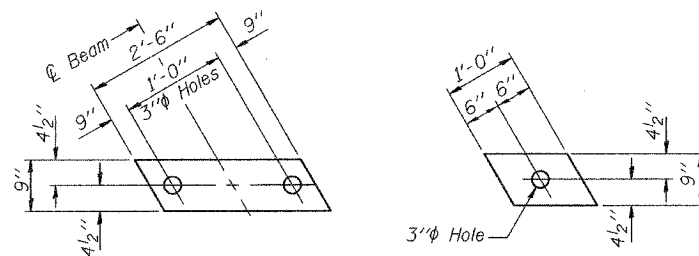


STATE OF ILLINOIS
DEPARTMENT OF TRANSPORTATION

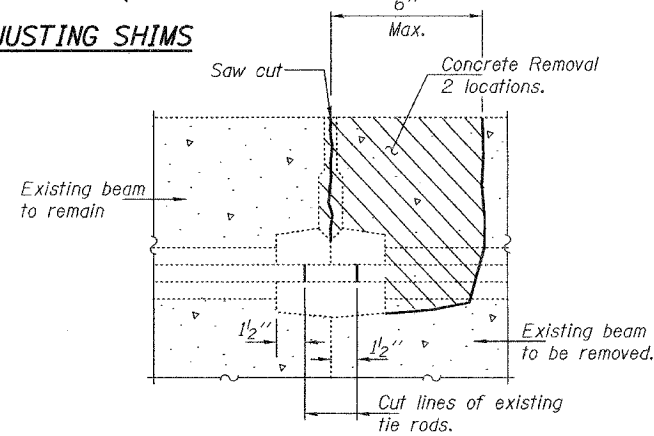
ROUTE NO.	SECTION	COUNTY	TOTAL SHEETS	SHEET NO.
SBI 82		HENRY	11	2
FED. ROAD DIST. NO. 7	ILLINOIS	FED. AID PROJECT		

SHEET NO. 2
2 SHEETS

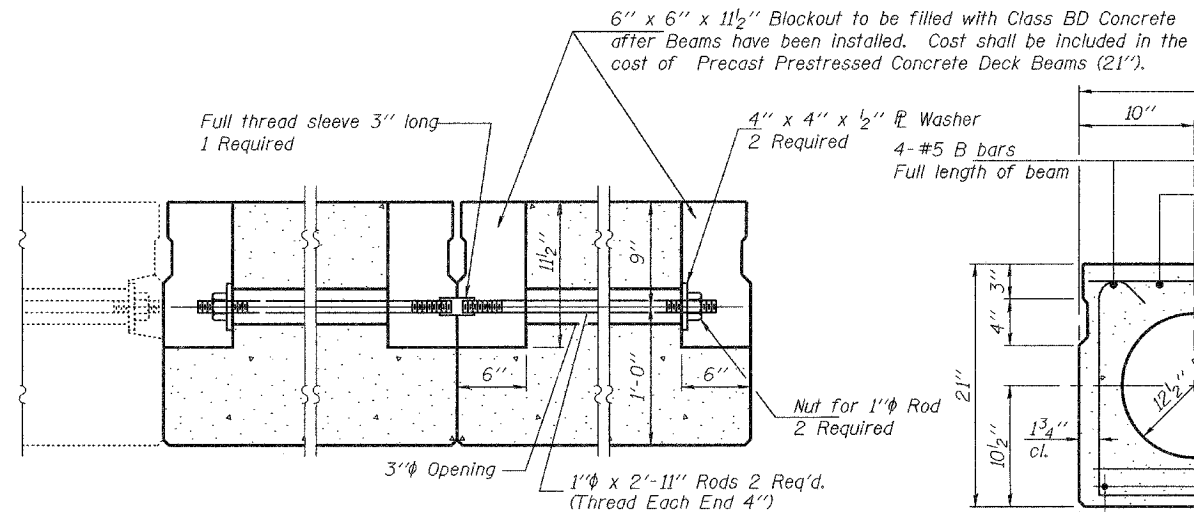
Contract No. 64C67



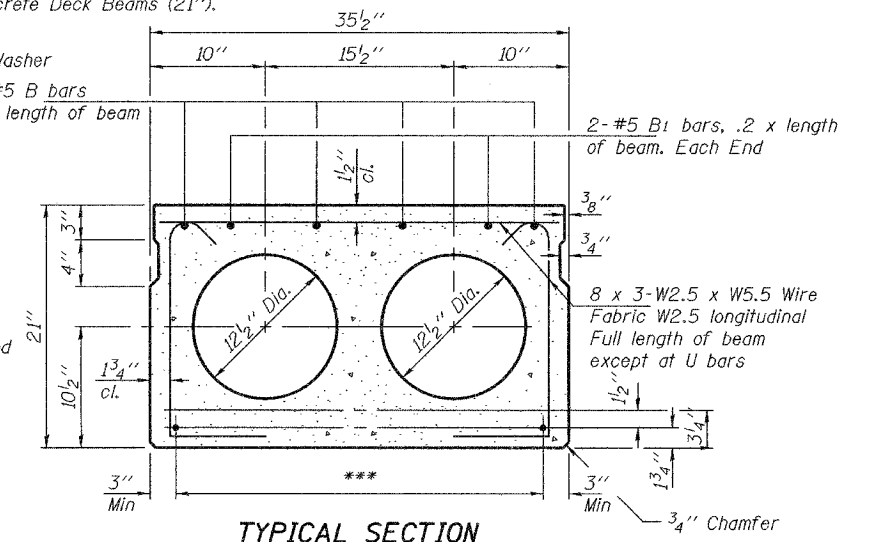
FABRIC BEARING PAD ADJUSTING SHIMS



BEAM REMOVAL DETAIL
AT TRANSVERSE TIES



TYPICAL TRANSVERSE TIE ASSEMBLY



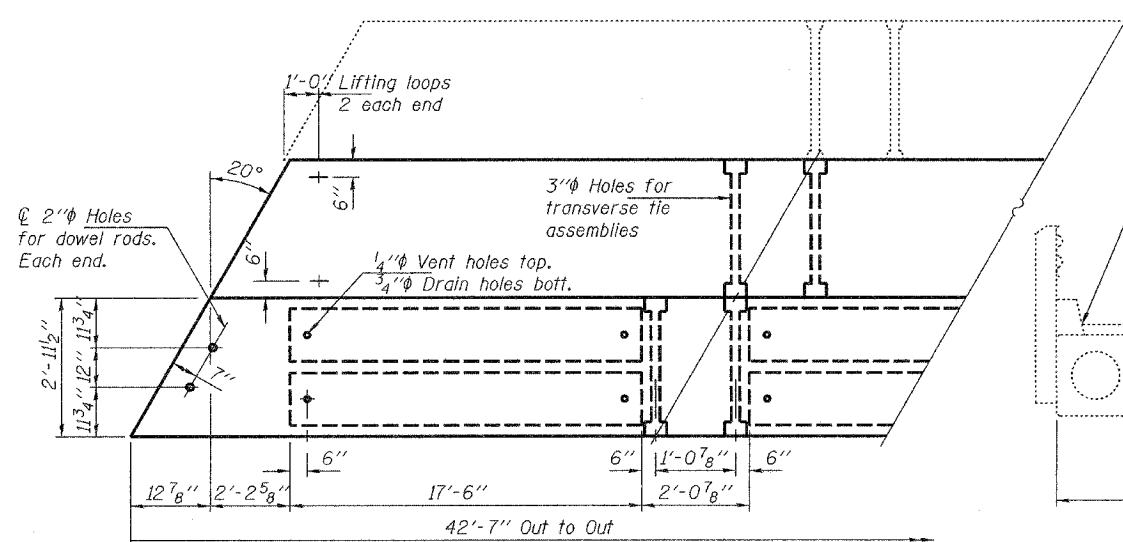
TYPICAL SECTION

1/2" Strands, Each Strand Stressed to 30,900 Lbs.
5-Strands 1 3/4" up, 6-Strands 3/4" up

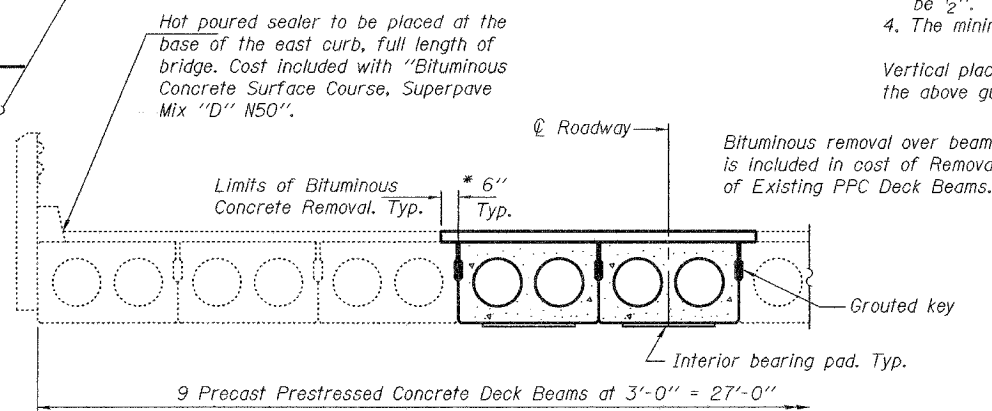
*** TRANSVERSE PLACEMENT GUIDELINES

1. Place strands symmetrically about centerline of beam.
2. The minimum distance from center to center of strands in all directions shall be 2".
3. The minimum clearance from strand to dowel hole shall be 1/2".
4. The minimum clearance from strand to void shall be 1 1/2".

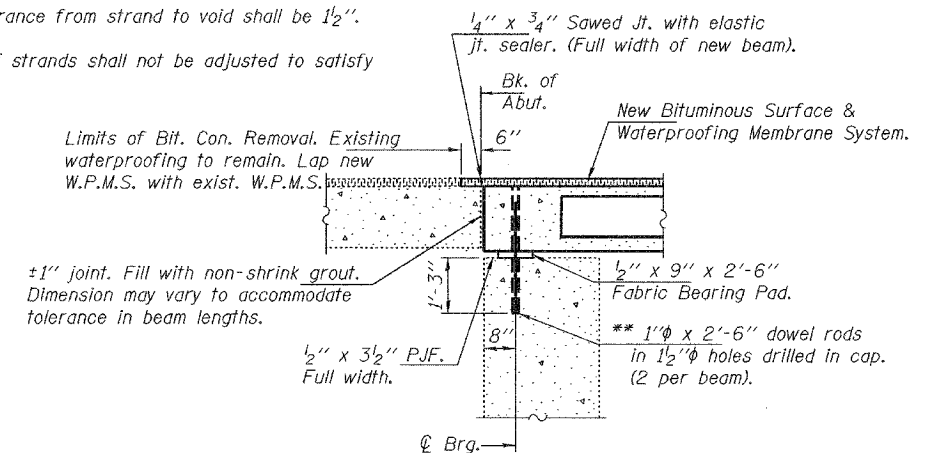
Vertical placement of strands shall not be adjusted to satisfy the above guidelines.



PARTIAL PLAN



PARTIAL CROSS SECTION
(Looking South)



SECTION THRU ABUTMENTS

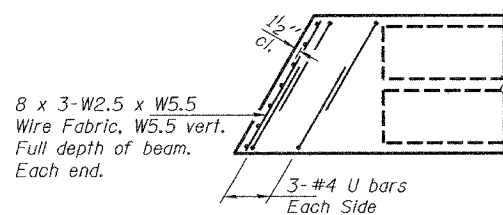
* Existing waterproofing to remain. Lap new waterproofing membrane system with existing waterproofing.

BILL OF MATERIAL

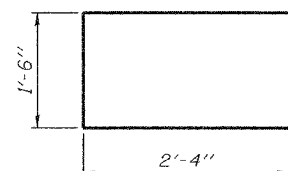
Precast Prestressed Conc. Deck Bms. (21" Depth)	Sq. Ft.	252

NOTES

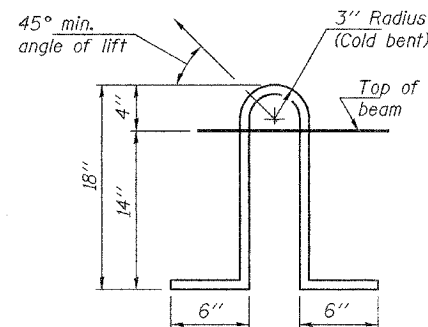
Prestressing steel shall be uncoated high strength, low relaxation 7-wire strand, Grade 270. The nominal diameter shall be 1/2" and the nominal cross-sectional area shall be 0.153 sq. in. Lifting loops shall be 2-1/2" diameter-270 ksi strands, as shown. The 1" rods in the transverse tie assembly shall be tightened to a snug fit and the threads set. Pockets that receive transverse tie bar on outside shall be filled with grout after transverse tie assembly is in place. The bearing seat surfaces shall be adjusted by shimming to assure firm and even bearing. Two 1/8" fabric adjusting shims of the dimensions shown shall be provided for each bearing. Keyway surfaces shall be cleaned to remove form oil or other bond breaking material prior to shipment of the beams. Cleaning shall be done by sandblasting the keyway areas between top of the beam and the bottom edge of the key. Corrosion Inhibitor, as covered in the Special Provisions, shall be used in the concrete for precast prestressed concrete deck beams. Required Release Strength, f'ci, shall be 4000 p.s.i.



END PLAN



BAR U



LIFTING LOOP DETAIL

DESIGNED	DAB
CHECKED	PSJ
DRAWN	balva
CHECKED	DAB PSJ

JULY 17, 2006
EXAMINED *John A. Morris*
ENGINEER OF STRUCTURAL SERVICES
PASSED *Ralph E. Anderson*
ENGINEER OF BRIDGES AND STRUCTURES

BEAM DETAILS
SBI RT. 82
HENRY COUNTY
STA. 636+24
SN 037-0106