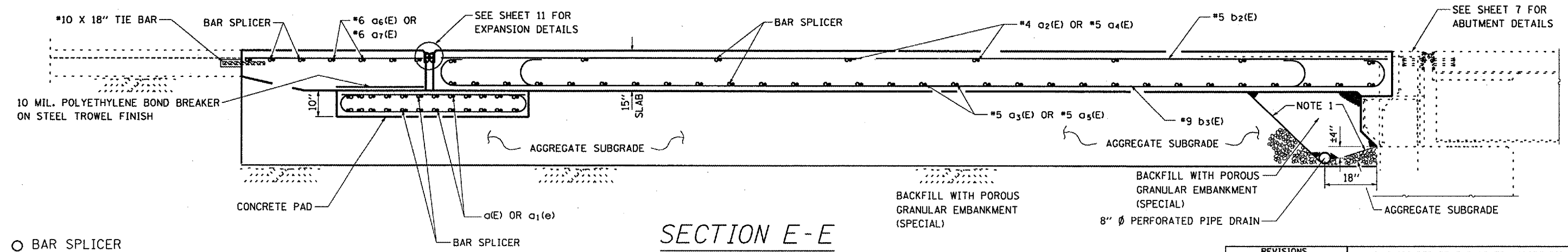
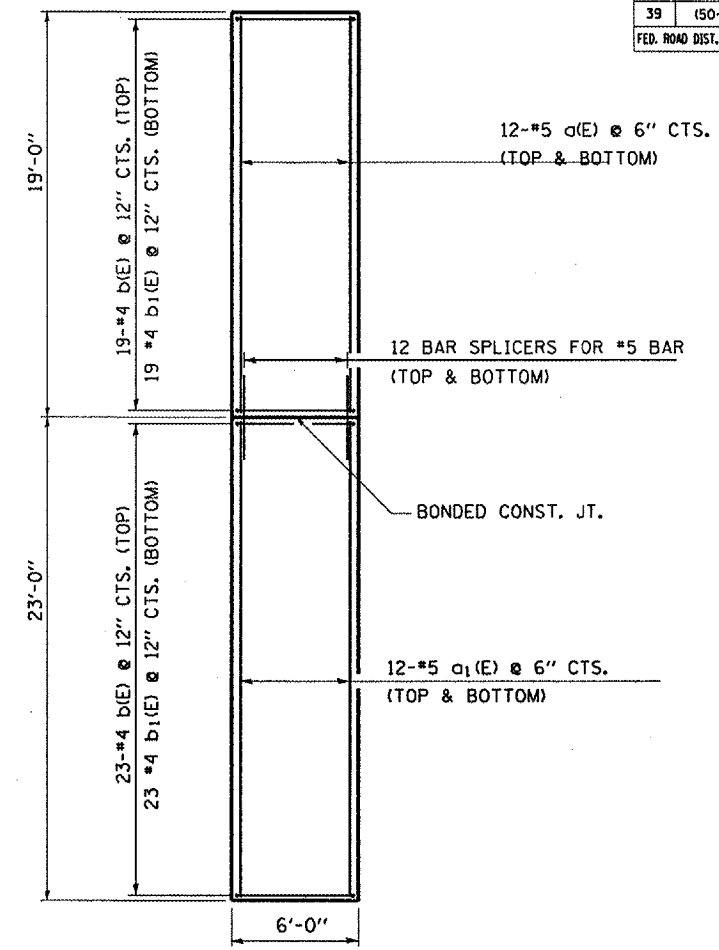
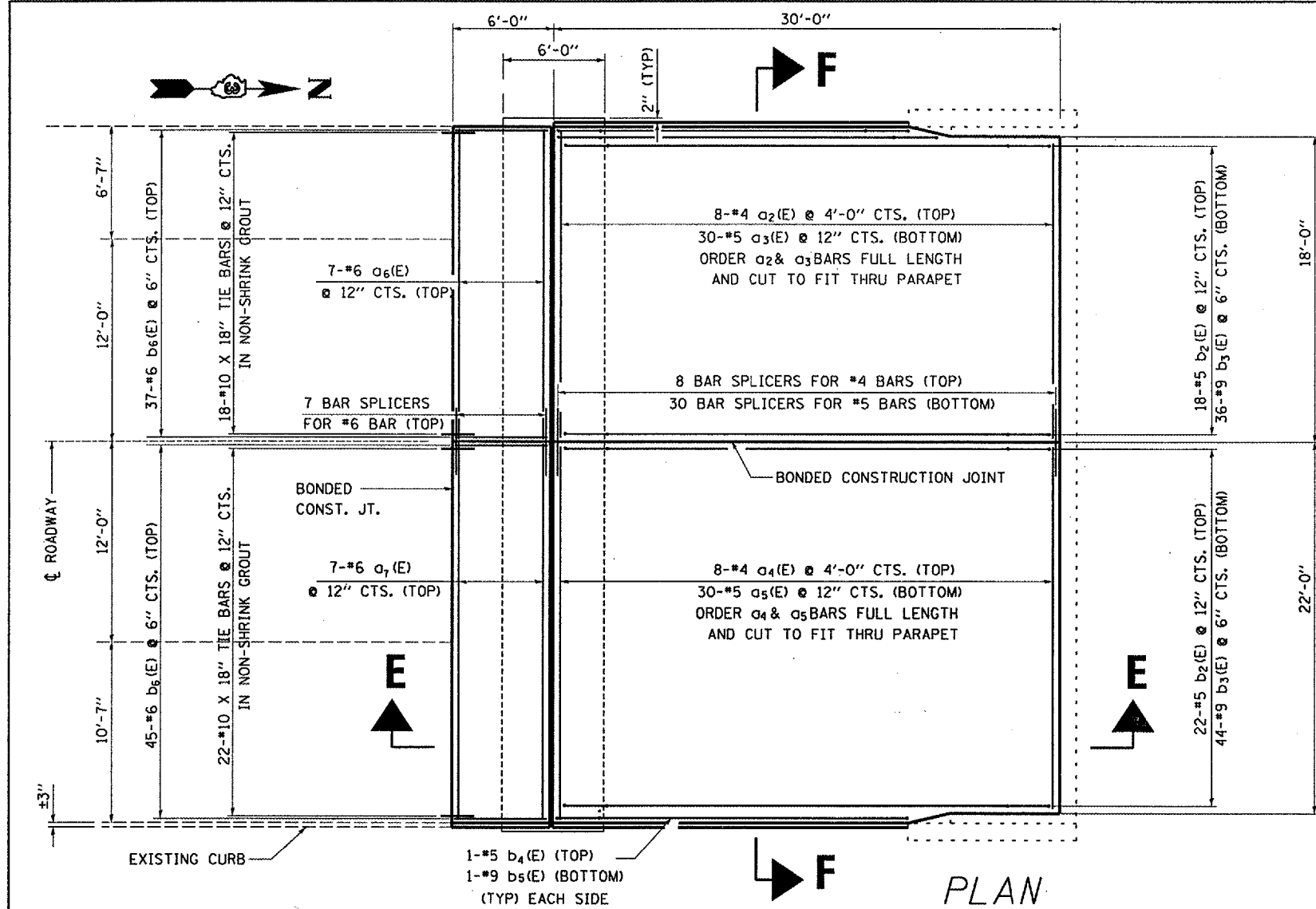


F.A.I. RTE.	SECTION	COUNTY	TOTAL SHEETS	SHEET NO.
39	(50-1VB)1-3	LASALLE	16	10
FED. ROAD DIST. NO.		ILLINOIS	NON-FED. AID PROJECT	



- BAR SPLICER
- REINFORCEMENT BAR

NOTE 1: PLACE GEOTECHNICAL FABRIC FOR GROUND STABILIZATION TO THE LINES AS SHOWN

NOTE: DETAILS SHOWN FOR NORTHBOUND STRUCTURE ONLY
SOUTHBOUND STRUCTURE SAME THROUGH ROTATION

REVISIONS	
NAME	DATE

ILLINOIS DEPARTMENT OF TRANSPORTATION
APPROACH PAVEMENT RECONSTRUCTION
F.A.I. ROUTE 39 OVER NORFOLK SOUTHERN RAILROAD
F.A.I. ROUTE 39 SECTION: (50-1VB)1-3
LASALLE COUNTY
STA. 565 + 86.08

Date: 05/09/2006
File: c:\proj\ecis\cma1107\cm303\def\atl.s.dgn