

Bench Mark: Chiseled "□" top of northeast wingwall of S.N. 021-0013. Elevation 680.86.

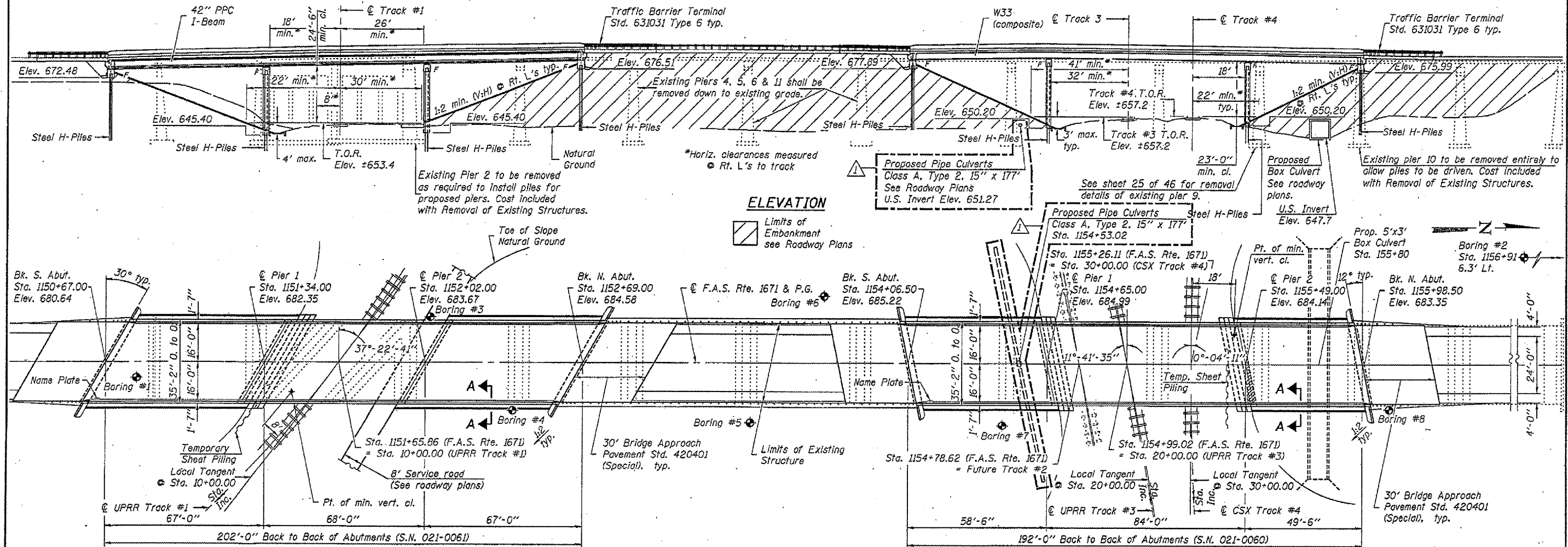
Existing Structure: S.N. 021-0013 built 1927 as S.B.I. Route 25, Section 22V at Station 1153+86.5. Superstructure replaced in 1975 as F.A. Route 26, Section 22 VBR. Structure consists of 14 span pre-cast deck beams on multi-column piers and spill-thru counterfort abuts. 59'-11 1/2" back-to-back abutments. 33'-0" out-to-out deck. Structure to be removed and replaced. Road to be closed and traffic detoured during construction.

No salvage

STATE OF ILLINOIS  
DEPARTMENT OF TRANSPORTATION

ROUTE NO.	SECTION	COUNTY	MILES	POST	SHEET NO. 1
F.A.S. 1671	†	DOUGLAS	181	85	46 SHEETS
FED. ROAD DIST. NO. 7	ALIGNED	FED. AID PROJECT			

Contract #70258  
† 22VBR-1 and 144SBR-2



**ELEVATION**  
Limits of Embankment see Roadway Plans

**PLAN**

Notes:  
See sheet 2 of 46 for Section A-A.  
Up to 1/4" will be ground off the bridge slab and the bridge approach pavement.  
The profile grade shows the final elevations after grinding.

**DESIGN STRESSES**

**FIELD UNITS**  
f<sub>c</sub> = 3,500 psi  
f<sub>y</sub> = 60,000 psi (reinforcement)  
f<sub>y</sub> = 50,000 psi (AASHTO M270 Grade 50W)

**PRECAST PRESTRESSED UNITS**  
f<sub>c</sub> = 6,000 psi  
f<sub>di</sub> = 5,000 psi  
f<sub>s</sub> = 270,000 psi (1/2" φ low lax strands)  
f<sub>ei</sub> = 201,960 psi (1/2" φ low lax strands)

**SEISMIC DATA**  
Seismic Performance Category (SPC) = A  
Bedrock Acceleration Coefficient (A) = 4.9%  
Site Coefficient (S) = 1.2



**GENERAL PLAN & ELEVATION**  
**U.S. ROUTE 45 OVER**  
**UNION PACIFIC & CSX RAILROADS**  
**F.A.S. ROUTE 1671 - SEC. 22VBR-1**  
**DOUGLAS COUNTY**  
**STATION 1151+65.86 (SOUTH)**  
**STATION 1154+99.02 (NORTH)**  
**STRUCTURE NO. 021-0061 (SOUTH)**  
**STRUCTURE NO. 021-0060 (NORTH)**

DESIGNED *C.M.E.*  
CHECKED *John T. Hand*  
DRAWN W.D.C. / M.B.M.  
CHECKED *C.M.E. / JZ7*

AUGUST 4, 2006  
EXAMINED *James D. ...*  
PASSED *Ralph ...*  
ENGINEER OF BRIDGES AND STRUCTURES



**LOADING HS20-44**  
Allow 50#/sq. ft. for future wearing surface.  
**DESIGN SPECIFICATIONS**  
2002 AASHTO

EXPIRES 11-30-2006

Revised 9-5-06 C.M.E.