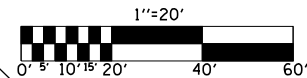


F.A.S. RTE.	SECTION	COUNTY	TOTAL SHEETS	SHEET NO.
1671	*	DOUGLAS	181	53
STA. 1122+00.00		TO STA. 1127+75.00		
FED. ROAD DIST. NO.	ILLINOIS	FED. AID PROJECT		

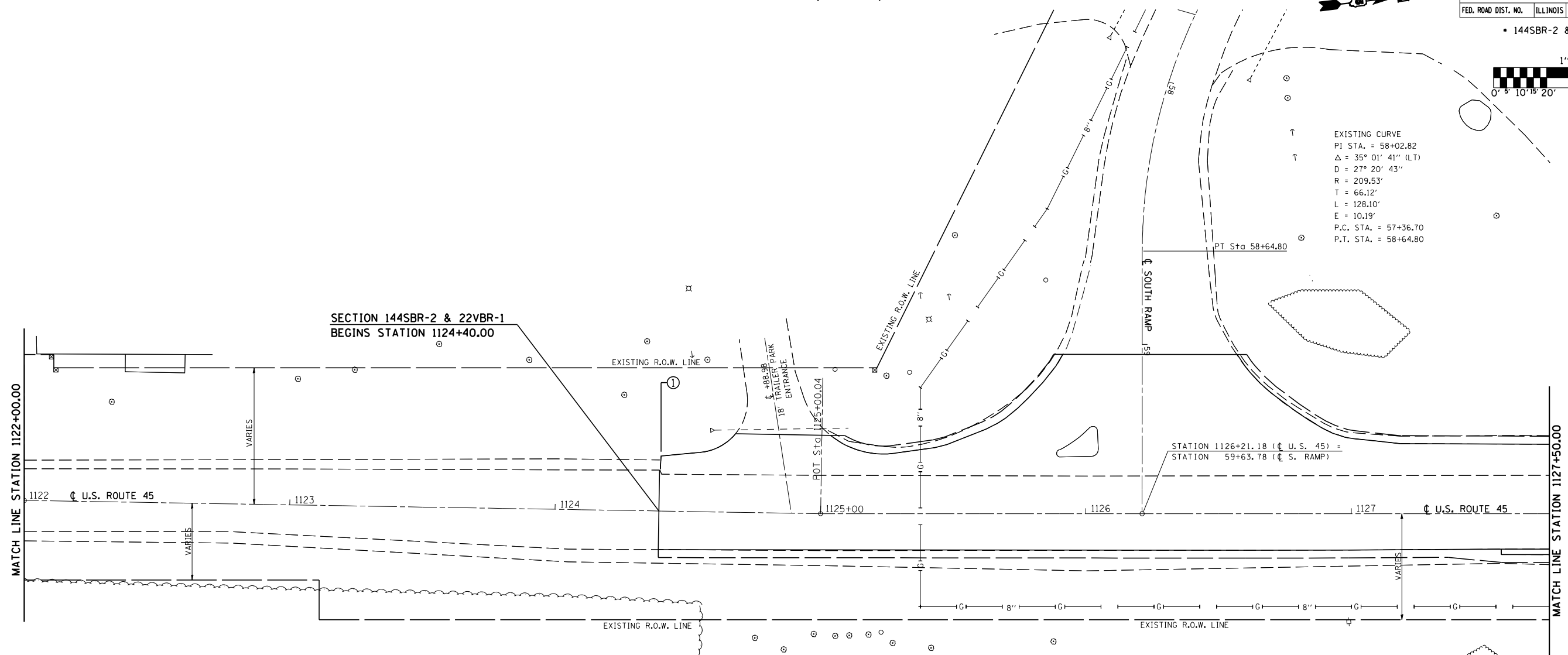
• 144SBR-2 & 22VBR-1



SEC. 3, T. 15 N., R. 8 E. OF THE 3rd P.M.



EXISTING CURVE
 PI STA. = 58+02.82
 Δ = 35° 01' 41" (LT)
 D = 27° 20' 43"
 R = 209.53'
 T = 66.12'
 L = 128.10'
 E = 10.19'
 P.C. STA. = 57+36.70
 P.T. STA. = 58+64.80



SEC. 3, T. 15 N., R. 8 E. OF THE 3rd P.M.

ILLINOIS DEPARTMENT OF TRANSPORTATION
SEEDING PLAN
 F.A.S. ROUTE 1671 (U.S. ROUTE 45)
 SECTION 144SBR-2 & 22VBR-1
 DOUGLAS COUNTY

SCALE: 1" = 20'-0"
 DATE: 06/05/06
 DRAWN BY: B.B.P.
 CHECKED BY: C.R.G.