

F.A.S. RTE.	SECTION	COUNTY	TOTAL SHEETS	SHEET NO.
516	241BR & 56BR	CHAMPAIGN	82	1

STATE OF ILLINOIS
DEPARTMENT OF TRANSPORTATION
DIVISION OF HIGHWAYS

**PROPOSED
HIGHWAY PLANS**

F.A.S. ROUTE 516 / (CH 12)
SECTION 241BR & 56BR
PROJECT BHS - RS - 0516 (111)
CHAMPAIGN COUNTY

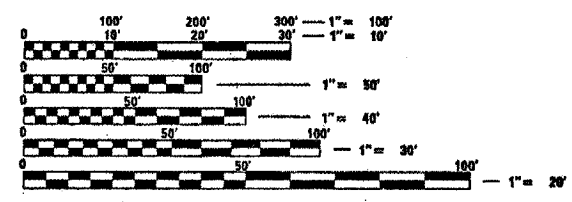
FOR INDEX OF SHEETS, SEE SHEET NO. 2
FOR SUMMARY OF QUANTITIES, SEE SHEET NO. 4-6



C-95-015-04
SUPERSTRUCTURE REPLACEMENT OVER SALT FORK DITCH 4.5 MILES NORTH OF ST. JOSEPH
BRIDGE REMOVAL / CULVERT REPLACEMENT 2.2 MILES NORTH OF ST. JOSEPH

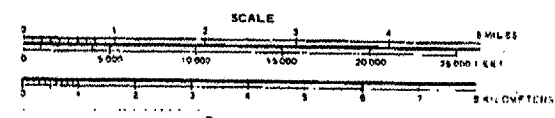
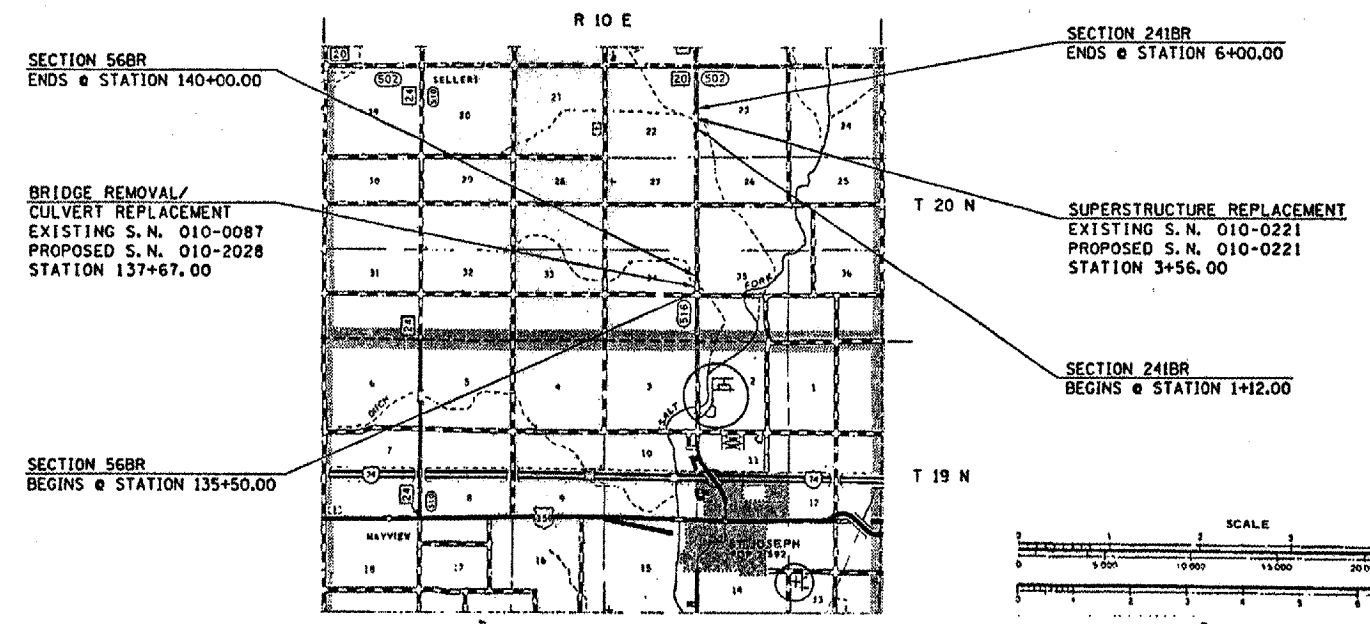
CURRENT ADT
F. A. S. 516 (CH 12) = 1,200 (2005)

DESIGN DESIGNATION
N/A



FULL SIZE PLANS HAVE BEEN PREPARED USING STANDARD ENGINEERING SCALES. REDUCED SIZED PLANS WILL NOT CONFORM TO STANDARD SCALES. IN MAKING MEASUREMENTS ON REDUCED PLANS, THE ABOVE SCALES MAY BE USED.

J.U.L.I.E.
JOINT UTILITY LOCATION INFORMATION FOR EXCAVATION
1-800-892-0123 STANTON TOWNSHIP



TOTAL LENGTH OF SECTION & PROJECT = 938.0 FEET = 0.178 MILES
NET LENGTH OF SECTION & PROJECT = 938.0 FEET = 0.178 MILES

STATE OF ILLINOIS
DEPARTMENT OF TRANSPORTATION
DIVISION OF HIGHWAYS

SUBMITTED *July 5, 2006*
[Signature]
DEPUTY DIRECTOR OF HIGHWAYS, REGION ENGINEER

August 18, 2006
[Signature]
ENGINEER OF DESIGN AND ENVIRONMENT

August 18, 2006
[Signature]
DIRECTOR OF HIGHWAYS, CHIEF ENGINEER

**PRINTED BY THE AUTHORITY
OF THE STATE OF ILLINOIS**

PLOT DATE = 7/5/2006
 FILE NAME = c:\p\projects\7030304\703cover.dgn
 PLOT SCALE = 43.2555 7 IN.
 USER NAME = plrsonbr
 DESIGNER: GREG EAGLIN
 SQUAD LEADER: CHRIS GREESON
 PROJECT ENGINEER: KEVIN TRAPP
 (217)465-4181

CONTRACT NO. 70359