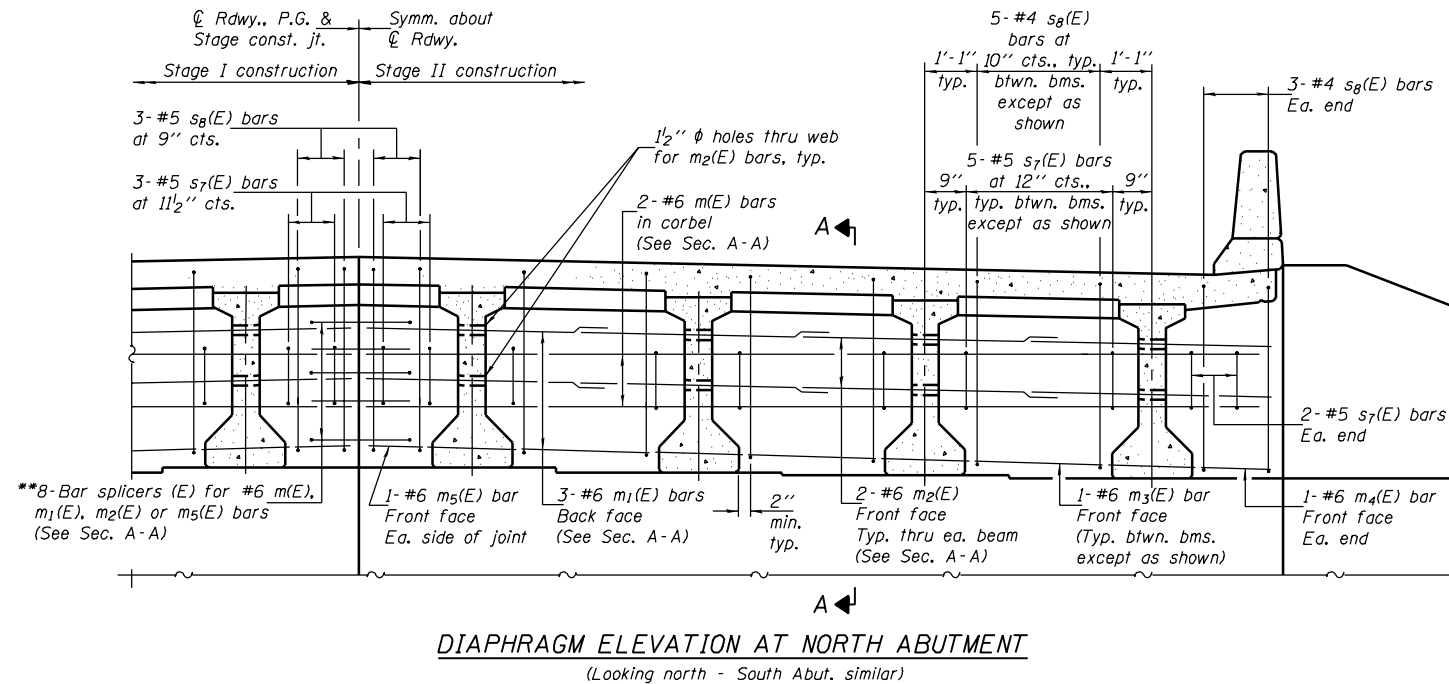


STATE OF ILLINOIS
DEPARTMENT OF TRANSPORTATION

ROUTE NO.	SECTION	COUNTY	TOTAL SHEETS	SHEET NO.
FAP 332	47BR-2	VERMILION	68	30
FED. ROAD DIST. NO. 7	ILLINOIS	FED. AID PROJECT		

SHEET NO. 11
23 SHEETS

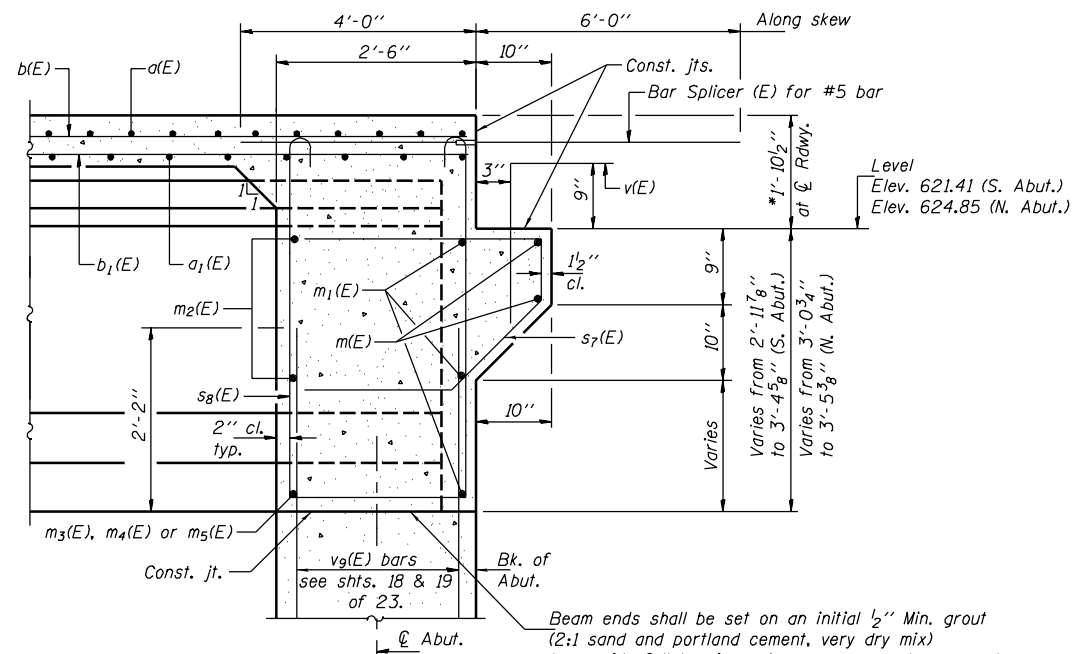
Contract #70420



*Prior to grinding
**Use bent bar splicers in front face.
See details on sheet 21 of 23.

**8-Bar splicers (E) for #6 m(E), m1(E), m2(E) or m5(E) bars (See Sec. A-A)

Notes: Reinforcement bars in diaphragm are billed with superstructure on sheet 10 of 23.
Concrete in diaphragm is included with Concrete Superstructure on sheet 10 of 23.
For details of bars s7(E) & s8(E) see sheet 10 of 23.
The s7(E) & s8(E) bars shall be placed parallel to the beams. Spacing for these bars shall be at right angles to the beams.
Reinforcement bars designated (E) shall be epoxy coated.



MIN. BAR LAP
#6 bars = 2'-9"

Beam ends shall be set on an initial 1/2" Min. grout (2:1 sand and portland cement, very dry mix) to provide full bearing. Any excess grout squeezed out from under the beam shall be removed. Cost included with Concrete Structures.

DESIGNED	D. P. Narielwala
CHECKED	S. M. Ryan
DRAWN	h.t. duong
CHECKED	DPN/SMR

August 4, 2006
EXAMINED *Thomas J. Damagala*
PASSED *Ralph E. Anderson*
ENGINEER OF BRIDGES AND STRUCTURES

ABUTMENT DIAPHRAGM DETAILS
F.A.P. RTE. 332 - SEC. 47BR-2
VERMILION COUNTY
STATION 2522+72.00
STRUCTURE NO. 092-0206