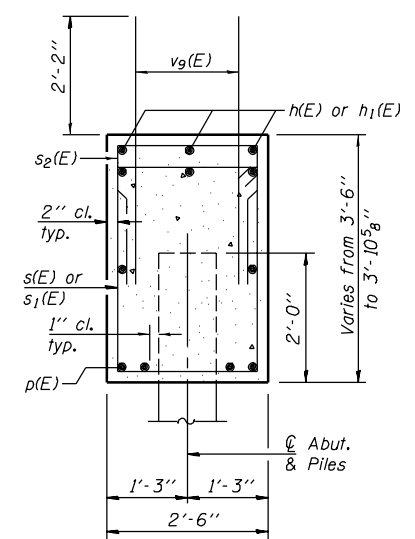
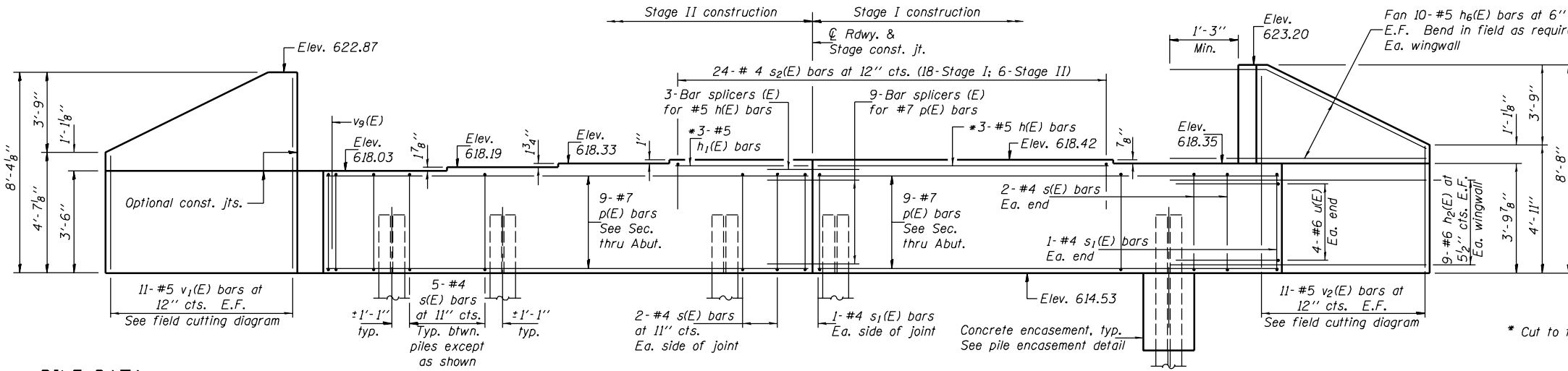


STATE OF ILLINOIS  
DEPARTMENT OF TRANSPORTATION

ROUTE NO.	SECTION	COUNTY	TOTAL SHEETS	SHEET NO.	SHEET NO. 18 23 SHEETS
FAP 332	47BR-2	VERMILION	68	37	
FED. ROAD DIST. NO. 7	ILLINOIS	FED. AID PROJECT-			

Contract #70420

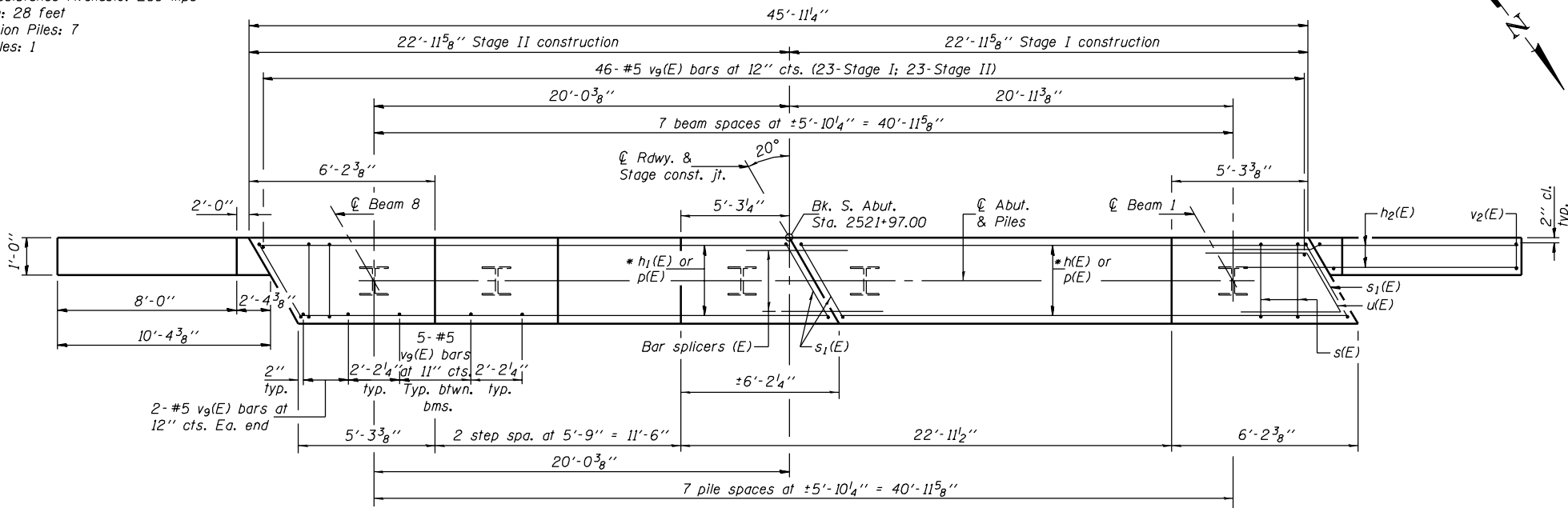


SEC. THRU ABUT.

PILE DATA

Type: Steel HP12x53 w/pile shoes  
Nominal Required Bearing: 418 kips  
Factored Resistance Available: 209 kips  
Est. Length: 28 feet  
No. Production Piles: 7  
No. Test Piles: 1

ELEVATION  
(Looking south)

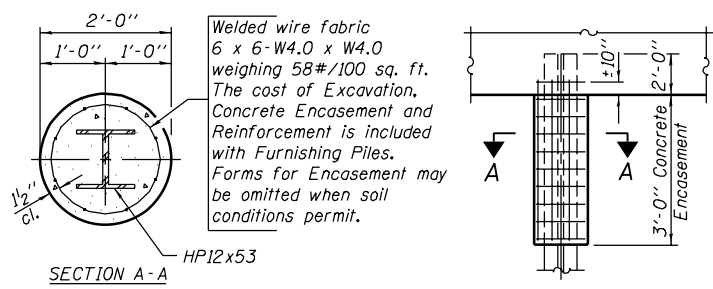


PLAN

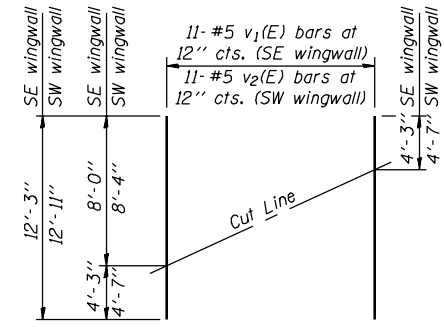
Notes: Pour steps monolithically with cap.  
Reinforcement bars designated (E) shall be epoxy coated.  
For bar splicer details, see sheet 21 of 23.

DESIGNED	D. P. Narielwala
CHECKED	S. M. Ryan
DRAWN	h.t. duong
CHECKED	DPN/SMR

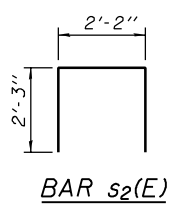
August 4, 2006  
EXAMINED *Thomas J. Damagala*  
PASSED *Ralph E. Anderson*  
ENGINEER OF BRIDGES AND STRUCTURES



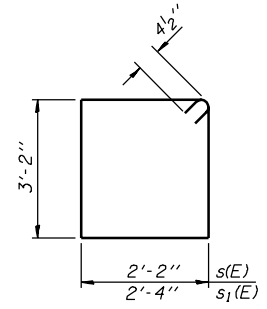
PILE ENCASEMENT DETAIL



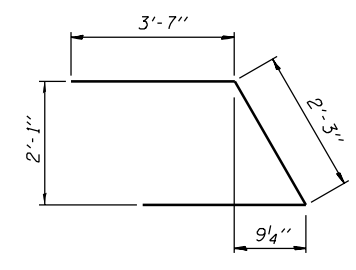
FIELD CUTTING DIAGRAM  
Order v1(E) & v2(E) bars full length.  
Cut as shown and use remainder of bars in opposite face.



BAR s2(E)



BARS s(E)  
& s1(E)



BAR u(E)

BILL OF MATERIAL

Bar	No.	Size	Length	Shape
h(E)	3	#5	17'-4"	—
h1(E)	3	#5	5'-10"	—
h2(E)	36	#6	13'-7"	—
h6(E)	40	#5	12'-3"	—
p(E)	18	#7	22'-7"	—
s(E)	38	#4	11'-5"	□
s1(E)	4	#4	11'-9"	□
s2(E)	24	#4	6'-8"	□
u(E)	8	#6	9'-5"	▽
v1(E)	11	#5	12'-3"	—
v2(E)	11	#5	12'-11"	—
v9(E)	85	#5	4'-4"	—
Concrete Structures		Cu. Yd.	21.0	
Reinforcement Bars, Epoxy Coated		Pound	3360	
Furnishing Steel Piles HP12x53		Foot	196	
Driving Piles		Foot	196	
Test Pile Steel HP12x53		Each	1	
Pile Shoes		Each	8	

SOUTH ABUTMENT  
F.A.P. RTE. 332 - SEC. 47BR-2  
VERMILION COUNTY  
STATION 2522+72.00  
STRUCTURE NO. 092-0206