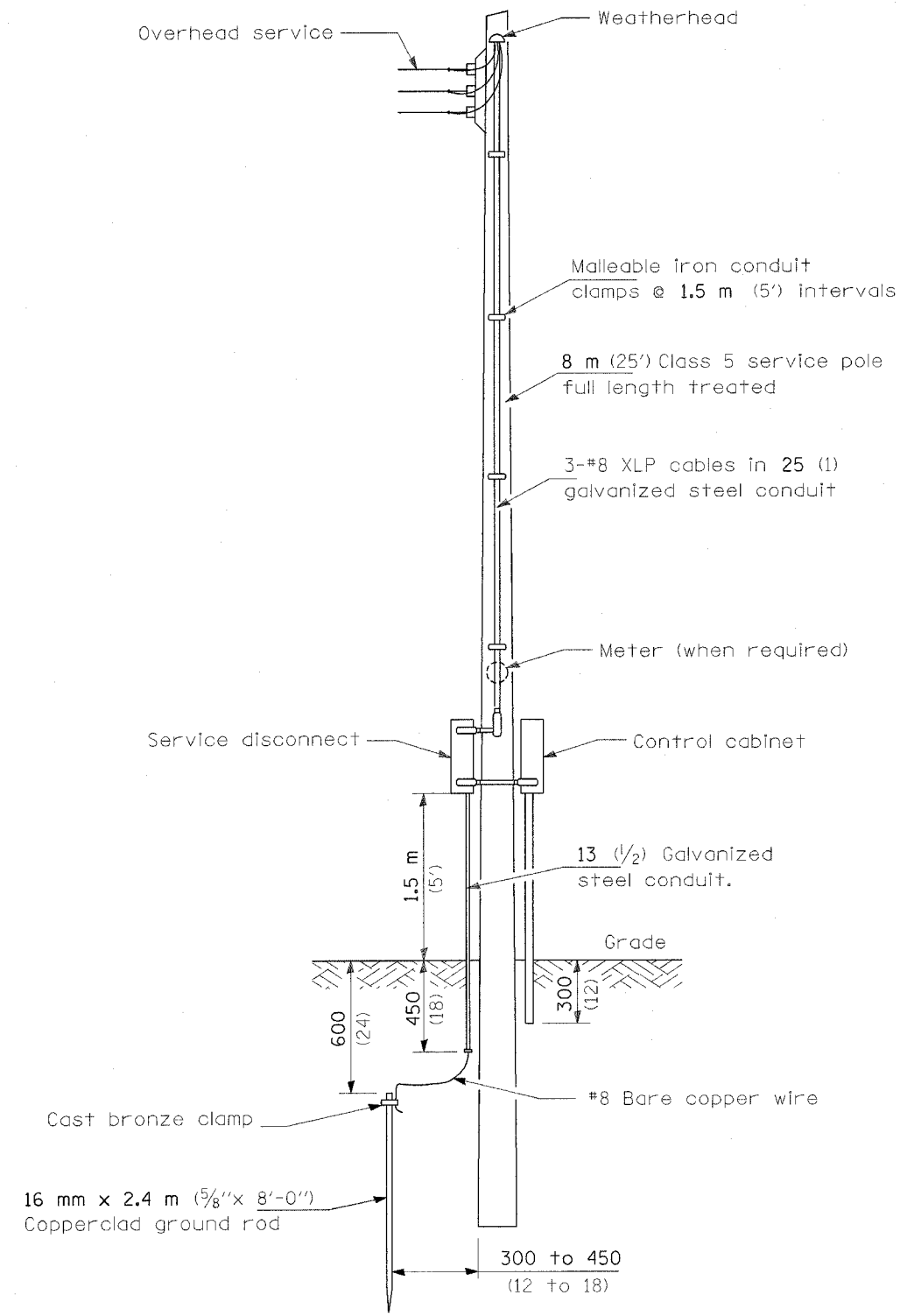
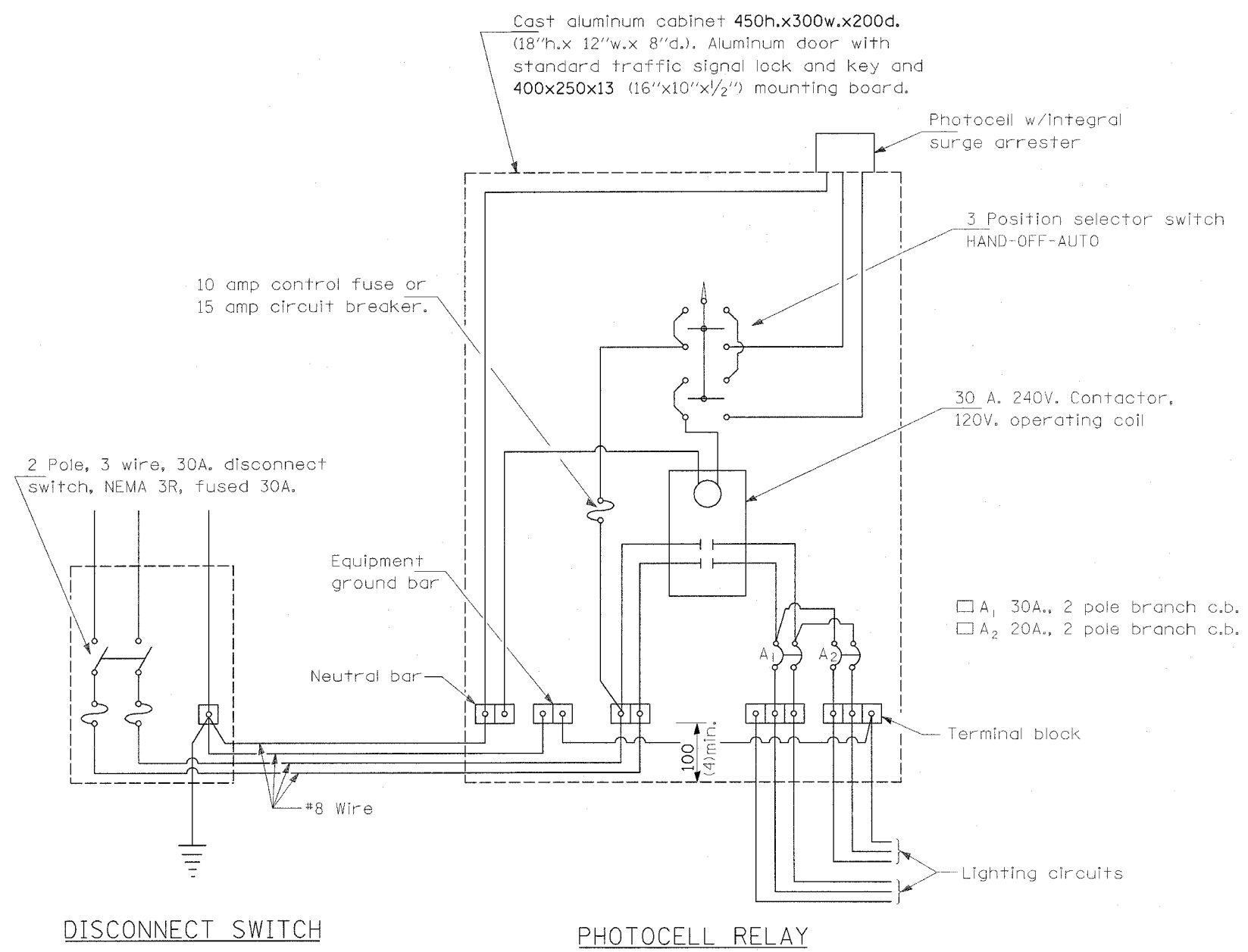


F.A. RTE.	SECTION	COUNTY	TOTAL SHEETS	SHEET NO.
774	(1072) TSL-4	EFFINGHAM	13	9
STA.		TO STA.		
FED. ROAD DIST. NO.		ILLINOIS FED. AID PROJECT		



SERVICE POLE



DISCONNECT SWITCH

PHOTOCELL RELAY

GENERAL NOTES

All equipment shall be U.L. Listed.
 All dimensions are in millimeters unless otherwise shown.

REVISIONS		ILLINOIS DEPARTMENT OF TRANSPORTATION
NAME	DATE	
		CONTROL INSTALLATION SERVICE POLE MOUNTED 120/240V., 1 PHASE, 3 WIRE SERVICE SCALE: VERT. _____ HORIZ. _____ DATE _____ DRAWN BY _____ CHECKED BY _____

PLOT DATE = 8/1/2006
 FILE NAME = #FILEL#
 PLOT SCALE = #SCALE#
 USER NAME = davisrct