

F.A.P. RTE.	SECTION	COUNTY	TOTAL SHEETS	SHEET NO.
327	**	CLAY	5	1

** D7 SIGNAL MODERNIZATION 2007-3

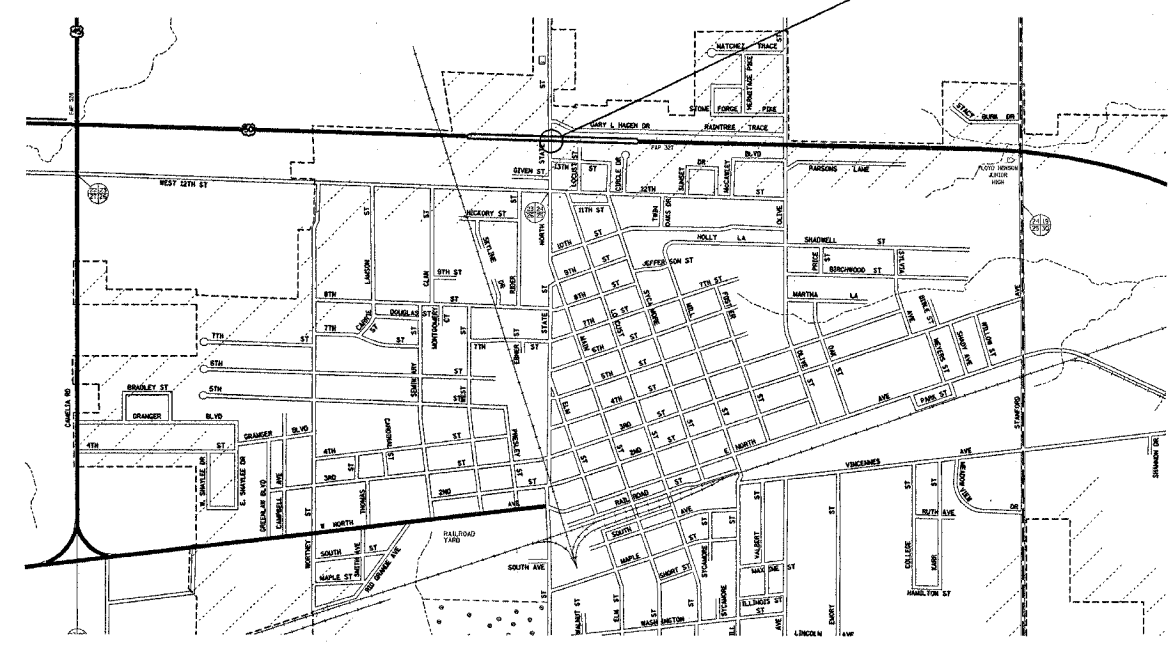
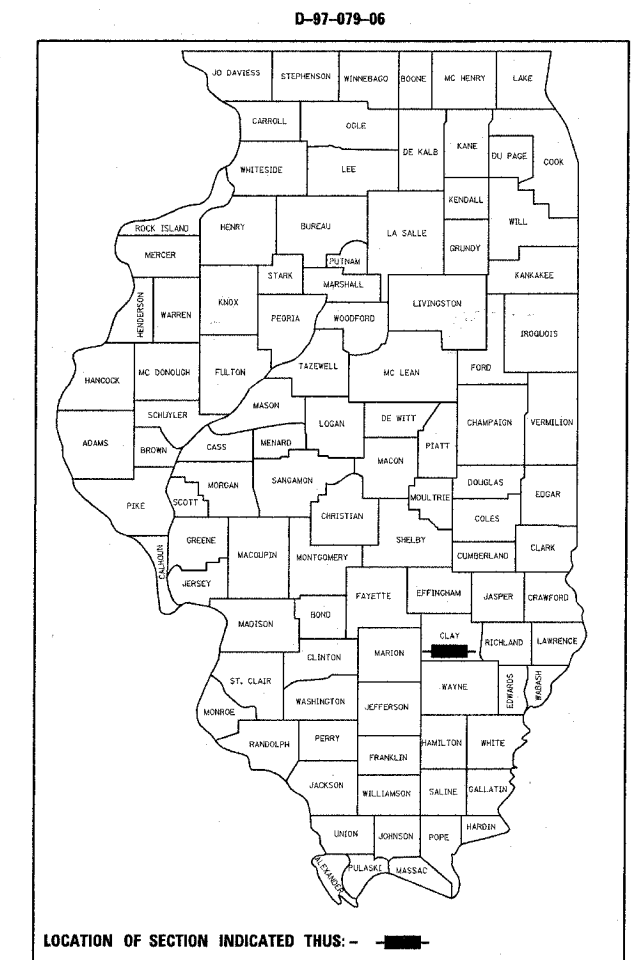
STATE OF ILLINOIS
DEPARTMENT OF TRANSPORTATION
DIVISION OF HIGHWAYS

**PROPOSED
HIGHWAY PLANS**

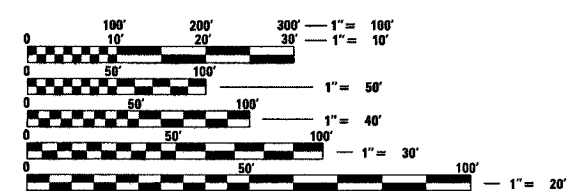
FAP ROUTE 327 (US ROUTE 45/50)
D7 SIGNAL MODERNIZATION 2007-3
PROJECT: F-0327(037)
CLAY COUNTY

C-97-125-06

LOCATION OF PROJECT
US 45/50 AND
N. STATE ST.
IN FLORA



FLORA



FULL SIZE PLANS HAVE BEEN PREPARED USING STANDARD ENGINEERING SCALES. REDUCED SIZED PLANS WILL NOT CONFORM TO STANDARD SCALES. IN MAKING MEASUREMENTS ON REDUCED PLANS, THE ABOVE SCALES MAY BE USED.

J.U.L.I.E.
JOINT UTILITY LOCATION INFORMATION FOR EXCAVATION
1-800-892-0123

CONTRACT NO. 74207

STATE OF ILLINOIS
DEPARTMENT OF TRANSPORTATION
DIVISION OF HIGHWAYS

SUBMITTED June 29, 2006
Christ H. Reed
DEPUTY DIRECTOR OF HIGHWAYS, REGION FOUR ENGINEER

August 18, 2006
Mike Hine
ENGINEER OF DESIGN AND ENVIRONMENT

August 18, 2006
Milton R. Sw., P.E.
DIRECTOR OF HIGHWAYS, CHIEF ENGINEER

**PRINTED BY THE AUTHORITY
OF THE STATE OF ILLINOIS**

6/29/2006
c:\projects\74207\d\07906pe.dgn

PROJECT ENGINEER : ROB MACKLIN
SQUAD LEADER :
DESIGNER : LYNN McCLELLAN
TELEPHONE : 217/342-3951 EX 245