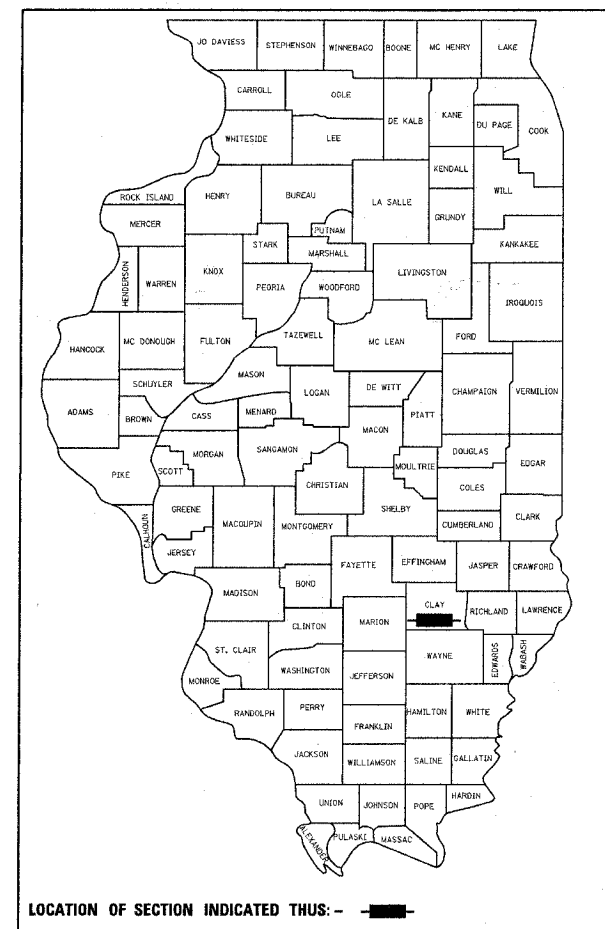


F.A.P. RTE.	SECTION	COUNTY	TOTAL SHEETS	SHEET NO.
327	**	CLAY	5	1

** D7 SIGNAL MODERNIZATION 2007-3

D-97-079-06



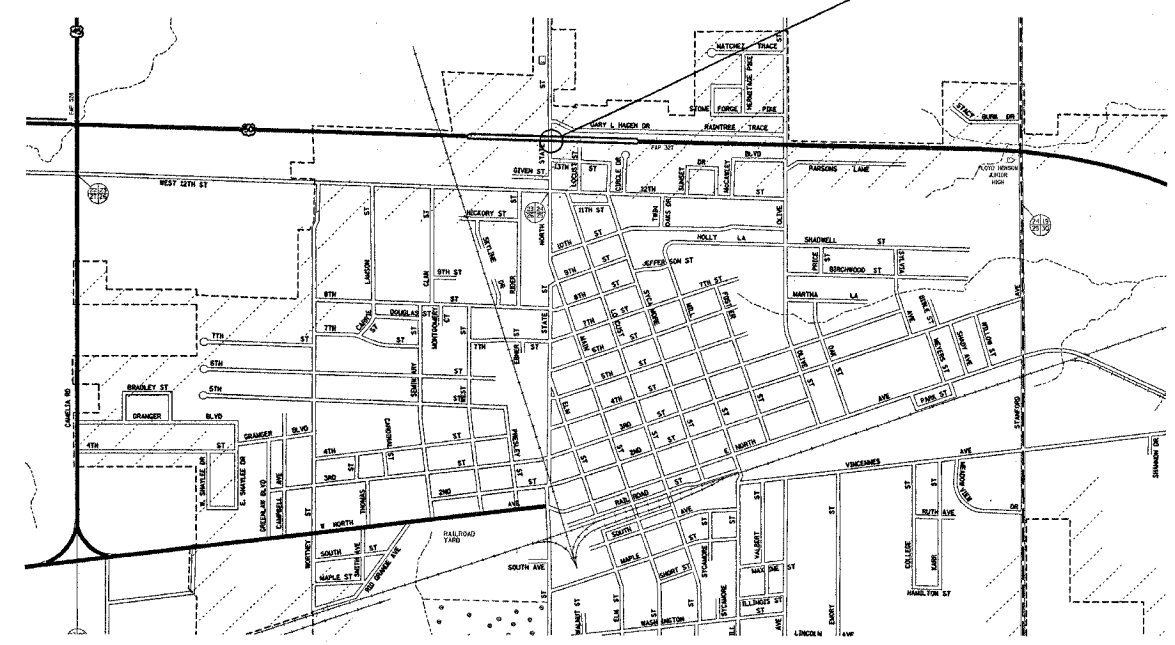
LOCATION OF PROJECT
US 45/50 AND
N. STATE ST.
IN FLORA

STATE OF ILLINOIS
DEPARTMENT OF TRANSPORTATION
DIVISION OF HIGHWAYS

**PROPOSED
HIGHWAY PLANS**

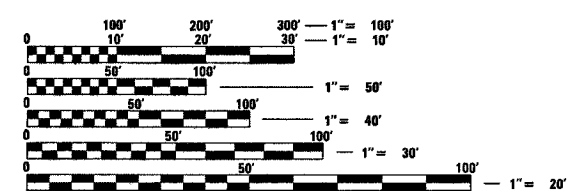
**FAP ROUTE 327 (US ROUTE 45/50)
D7 SIGNAL MODERNIZATION 2007-3
PROJECT: F-0327(037)
CLAY COUNTY**

C-97-125-06



FLORA

FOR INDEX OF SHEETS, SEE SHEET NO. 2



FULL SIZE PLANS HAVE BEEN PREPARED USING STANDARD ENGINEERING SCALES. REDUCED SIZED PLANS WILL NOT CONFORM TO STANDARD SCALES. IN MAKING MEASUREMENTS ON REDUCED PLANS, THE ABOVE SCALES MAY BE USED.

J.U.L.I.E.
JOINT UTILITY LOCATION INFORMATION FOR EXCAVATION
1-800-892-0123

CONTRACT NO. 74207

STATE OF ILLINOIS
DEPARTMENT OF TRANSPORTATION
DIVISION OF HIGHWAYS

SUBMITTED June 29, 2006
Christ H. Reed
DEPUTY DIRECTOR OF HIGHWAYS, REGION FOUR ENGINEER

August 18, 2006
Mike Hine
ENGINEER OF DESIGN AND ENVIRONMENT

August 18, 2006
Milton R. Sw., P.E.
DIRECTOR OF HIGHWAYS, CHIEF ENGINEER

**PRINTED BY THE AUTHORITY
OF THE STATE OF ILLINOIS**

6/29/2006
c:\projects\74207\d\07906pe.dgn

PROJECT ENGINEER : ROB MACKLIN
SQUAD LEADER :
DESIGNER : LYNN MCCLELLAN
TELEPHONE : 217/342-3951 EX 245

6/29/2006
 c:\projects\74207\d\07906pa.dgn

CONTRACT NO. 74207

F.A.P. RTE.	SECTION	COUNTY	TOTAL SHEETS	SHEET NO.
327	**	CLAY	5	2
STA.		TO STA.		
FED. ROAD DIST. NO.		ILLINOIS FED. AID PROJECT		
** D7 SIGNAL MODERNIZATION 2007-3				

GENERAL NOTES

THIS SECTION SHALL BE CONSTRUCTED IN ACCORDANCE WITH THE PLANS, THE "STANDARD SPECIFICATIONS FOR ROAD AND BRIDGE CONSTRUCTION", ADOPTED JANUARY 1, 2002; THE "SUPPLEMENTAL SPECIFICATIONS AND RECURRING SPECIAL PROVISIONS" ADOPTED MARCH 1, 2005; AND "THE SPECIAL PROVISIONS" INCLUDED IN THE PROPOSAL.

THIS PROJECT IS LOCATED AT THE INTERSECTION OF US 45/50 AND STATE STREET IN THE CITY OF FLORA, IN CLAY COUNTY. THE WORK INCLUDED IN THIS SECTION CONSISTS OF THE REMOVAL AND REPLACEMENT OF 4 EXISTING TRAFFIC SIGNAL HEADS AND THE REMOVAL OF 3 EXISTING TRAFFIC CORNER ISLANDS AND THE REPLACEMENT OF BASE COURSE AND ALL OTHER WORK NECESSARY TO COMPLETE THIS SECTION.

THE EXISTING TRAFFIC SIGNALS SHALL REMAIN IN OPERATION DURING THE CONSTRUCTION OF THE PROPOSED TRAFFIC SIGNALS.

IT IS PERMISSIBLE TO PLACE THE INTERSECTION INTO ALL RED FLASH TO FACILITATE THE INSTALLATION OF THE LED TRAFFIC SIGNAL HEADS AS DIRECTED BY THE ENGINEER.

THIS WORK SHALL BE DONE IN ACCORDANCE WITH THE APPLICABLE PORTION OF SECTION 895 OF THE STANDARD SPECIFICATIONS. ALL 4 EXISTING SIGNAL HEADS SHALL BECOME THE PROPERTY OF THE CITY OF FLORA. THE CONTRACTOR SHALL SAVE HARMLESS AND DELIVER THE EQUIPMENT TO:

CITY OF FLORA PUBLIC WORKS
 HAROLD D. HEMPHILL, DIRECTOR OF PUBLIC WORKS
 200 FAIRVIEW ST.
 FLORA, IL 62839
 618-662-8678
 618-662-4625

INDEX OF SHEETS

- 1 COVER SHEET
- 2 INDEX OF SHEETS AND GENERAL NOTES
- 3 SUMMARY OF QUANTITIES
- 4 REMOVAL ITEMS AND SIGNAL HEAD PLACEMENT
- 5 PAVEMENT MARKINGS

THE FOLLOWING STANDARDS ARE A PART OF THESE PLANS AND ARE INCLUDED AFTER SHEET NO. 5:

- 000001-04 STANDARD SYMBOLS, ABBREVIATIONS AND PATTERNS
- 701701-04 URBAN LANE CLOSURE, MULTILANE INTERSECTION
- 702001-06 TRAFFIC CONTROL DEVICES
- 880006 TRAFFIC SIGNAL MOUNTING DETAILS

PLT DATE = 6/29/2006
 FILE NAME = 07906PA.DGN
 PLOT SCALE = 1"=40'
 USER NAME = dstrick

REVISIONS		ILLINOIS DEPARTMENT OF TRANSPORTATION
NAME	DATE	
		GENERAL NOTES & INDEX OF SHEETS
SCALE:	VERT. DRAWN BY	CHECKED BY
DATE	HORIZ. DATE	

F.A.P. RTE.	SECTION	COUNTY	TOTAL SHEETS	SHEET NO.
327	**	CLAY	5	3
STA.		TO STA.		
FED. ROAD DIST. NO.	ILLINOIS	FED. AID PROJECT		
** D7 SIGNAL MODERNIZATION 2007-3				

SUMMARY OF QUANTITIES			CONSTRUCTION TYPE CODE			
CODE NO	ITEM	UNIT	URBAN TOTAL QUANTITIES	YO31-1F 80% FED. 20% STATE		
44000500	COMBINATION CURB AND GUTTER REMOVAL	FOOT	168	168		
44002020	CONCRETE MEDIAN SURFACE REMOVAL	SQ FT	547	547		
67100100	MOBILIZATION	L SUM	1	1		
70102635	TRAFFIC CONTROL AND PROTECTION, STANDARD 701701	L SUM	1	1		
* 72000100	SIGN PANEL - TYPE 1	SQ FT	10	10		
* 72400900	REMOVE SIGN PANEL	EACH	2	2		
* 78000100	THERMOPLASTIC PAVEMENT MARKING - LETTERS AND SYMBOLS	SQ FT	188	188		
* 78000400	THERMOPLASTIC PAVEMENT MARKING - LINE 6"	FOOT	669	669		
* 78000500	THERMOPLASTIC PAVEMENT MARKING - LINE 8"	FOOT	316	316		
* 78000600	THERMOPLASTIC PAVEMENT MARKING - LINE 12"	FOOT	159	159		
* 78000650	THERMOPLASTIC PAVEMENT MARKING - LINE 24"	FOOT	153	153		
78300100	PAVEMENT MARKING REMOVAL	SQ FT	328	328		
88200400	TRAFFIC SIGNAL BACKPLATE, FORMED PLASTIC	EACH	4	4		
89502375	REMOVE EXISTING TRAFFIC SIGNAL EQUIPMENT	EACH	1	1		
X8801300	SIGNAL HEAD, POLYCARBONATE, LED, 1-FACE, 3-SECTION, BRACKET MOUNTED	EACH	4	4		
Z0002900	BASE COURSE (OPTION)	SQ YD	72	72		

6/29/2006
 c:\projects\74207\d\07906pa.dgn

PLOT DATE = 6/29/2006
 FILE NAME = #FILE#
 PLOT SCALE = #SCALE#
 USER NAME = #DISTRICT#

REVISIONS	
NAME	DATE

ILLINOIS DEPARTMENT OF TRANSPORTATION
SUMMARY OF QUANTITIES
 SCALE: VERT. _____
 DATE: _____ HORIZ. _____
 DRAWN BY _____
 CHECKED BY _____

*SPECIALTY ITEMS

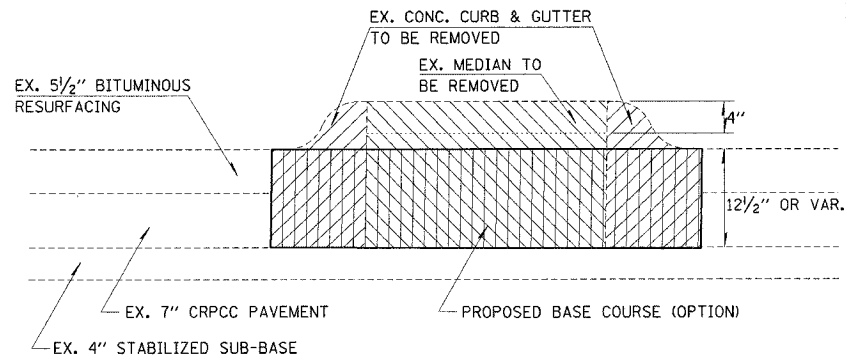
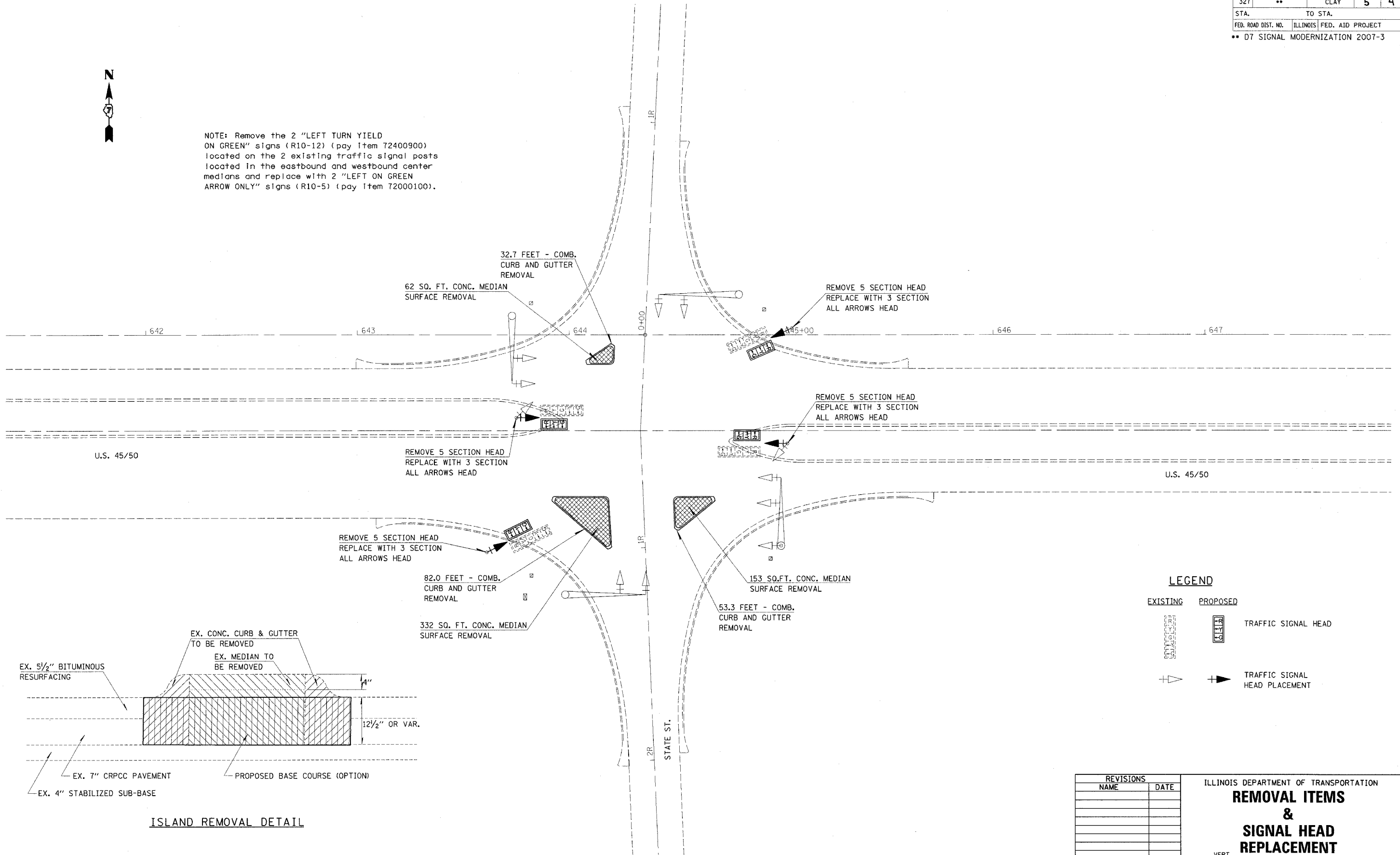
district
6/29/2006
c:\projects\74207\d\07906pa.dgn

CONTRACT NO. 74207

F.A.P. RTE.	SECTION	COUNTY	TOTAL SHEETS	SHEET NO.
327	**	CLAY	5	4
STA.		TO STA.		
FED. ROAD DIST. NO.		ILLINOIS FED. AID PROJECT		
** D7 SIGNAL MODERNIZATION 2007-3				



NOTE: Remove the 2 "LEFT TURN YIELD ON GREEN" signs (R10-12) (pay item 72400900) located on the 2 existing traffic signal posts located in the eastbound and westbound center medians and replace with 2 "LEFT ON GREEN ARROW ONLY" signs (R10-5) (pay item 72000100).



ISLAND REMOVAL DETAIL

LEGEND

EXISTING	PROPOSED	
		TRAFFIC SIGNAL HEAD
		TRAFFIC SIGNAL HEAD PLACEMENT

REVISIONS	
NAME	DATE

ILLINOIS DEPARTMENT OF TRANSPORTATION
**REMOVAL ITEMS
&
SIGNAL HEAD
REPLACEMENT**

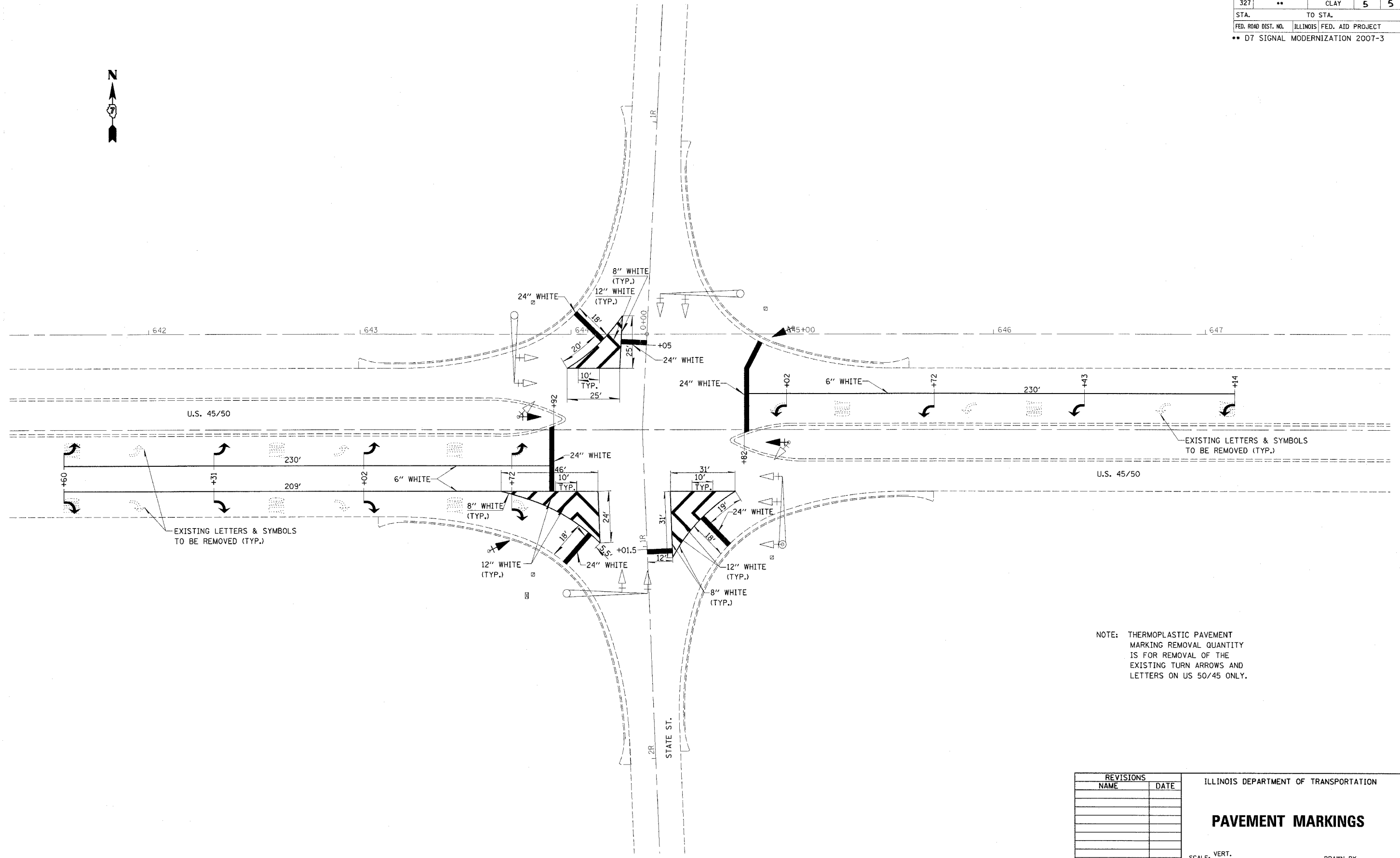
SCALE: VERT. _____
HORIZ. _____
DATE _____ DRAWN BY _____
CHECKED BY _____

PLOT DATE = 6/29/2006
FILE NAME = #FILEL#
PLOT SCALE = #SCALE#
USER NAME = district

F.A.P. RTE.	SECTION	COUNTY	TOTAL SHEETS	SHEET NO.
327	**	CLAY	5	5
STA.		TO STA.		
FED. ROAD DIST. NO.	ILLINOIS	FED. AID PROJECT		
** D7 SIGNAL MODERNIZATION 2007-3				



district
 6/29/2006
 c:\projects\74207\d\07906pa.dgn



EXISTING LETTERS & SYMBOLS TO BE REMOVED (TYP.)

EXISTING LETTERS & SYMBOLS TO BE REMOVED (TYP.)

NOTE: THERMOPLASTIC PAVEMENT MARKING REMOVAL QUANTITY IS FOR REMOVAL OF THE EXISTING TURN ARROWS AND LETTERS ON US 50/45 ONLY.

REVISIONS	
NAME	DATE

ILLINOIS DEPARTMENT OF TRANSPORTATION

PAVEMENT MARKINGS

SCALE: VERT.
HORIZ.

DRAWN BY
CHECKED BY

PLOT DATE = 6/29/2006
 FILE NAME = WFILE
 PLOT SCALE = *SCALE*
 USER NAME = district