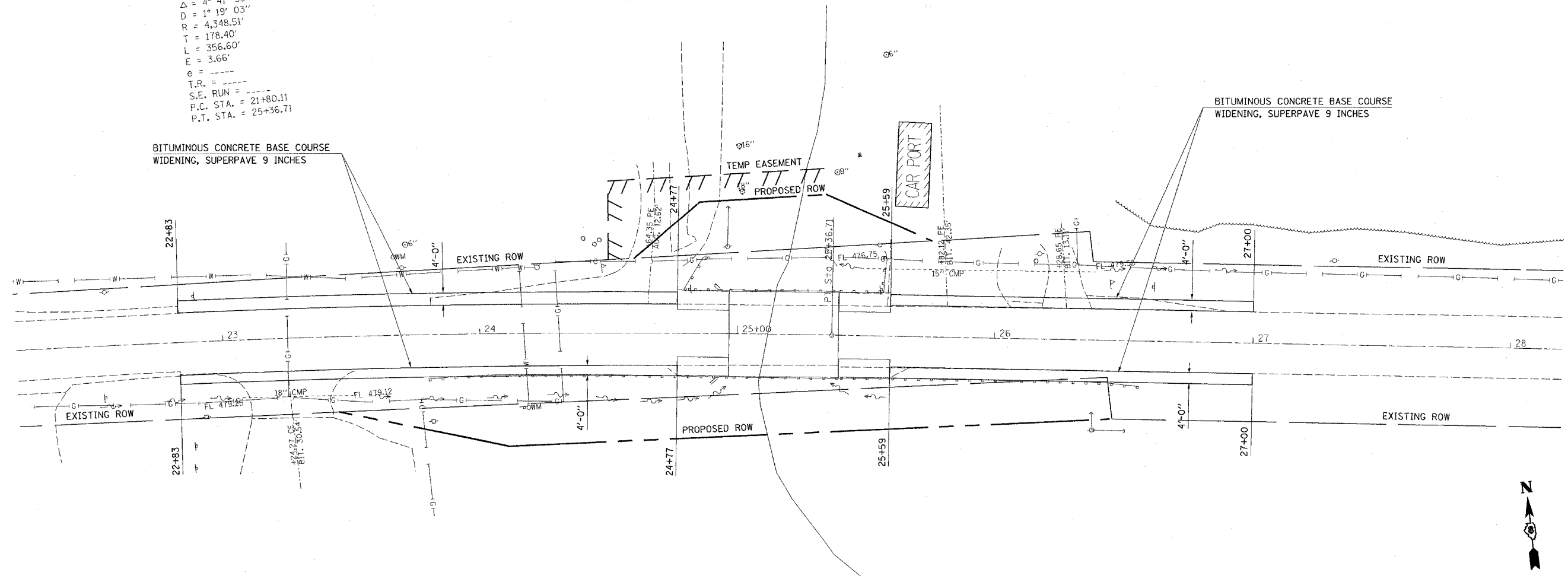


F.A.P. RTE.	SECTION	COUNTY	TOTAL SHEETS	SHEET NO.
817	8BR-2	WASHINGTON	52	12
STA. 22+20		TO STA. 28+20		
FED. ROAD DIST. NO.		ILLINOIS FED. AID PROJECT		

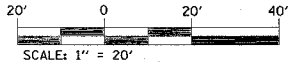


EXIST. CURVE C1
 PI STA. = 23+58.51
 $\Delta = 4^\circ 41' 55''$ (RT)
 $D = 1^\circ 19' 03''$
 $R = 4,348.51'$
 $T = 178.40'$
 $L = 356.60'$
 $E = 3.66'$
 $\theta = \dots$
 $T.R. = \dots$
 $S.E. RUN = \dots$
 $P.C. STA. = 21+80.11$
 $P.T. STA. = 25+36.71$



PRE-STAGE I DESCRIPTION OF WORK:

"BITUMINOUS CONCRETE BASE COURSE WIDENING, SUPERPAVE 9 INCHES" SHALL BE CONSTRUCTED TO ALLOW FOR TRAFFIC IN STAGE I AND II.



PLOT DATE = 7/18/2006
 FILE NAME = c:\p\proj\va\88985\plan\11988985.dwg
 PLOT SCALE = 26.0000 / IN.
 USER NAME = owerby

REVISIONS	
NAME	DATE

ILLINOIS DEPARTMENT OF TRANSPORTATION
STAGE CONSTRUCTION
PRE-STAGE I
 FAP ROUTE 817
 SECTION 8BR-2
 WASHINGTON COUNTY
 SN 095-0010