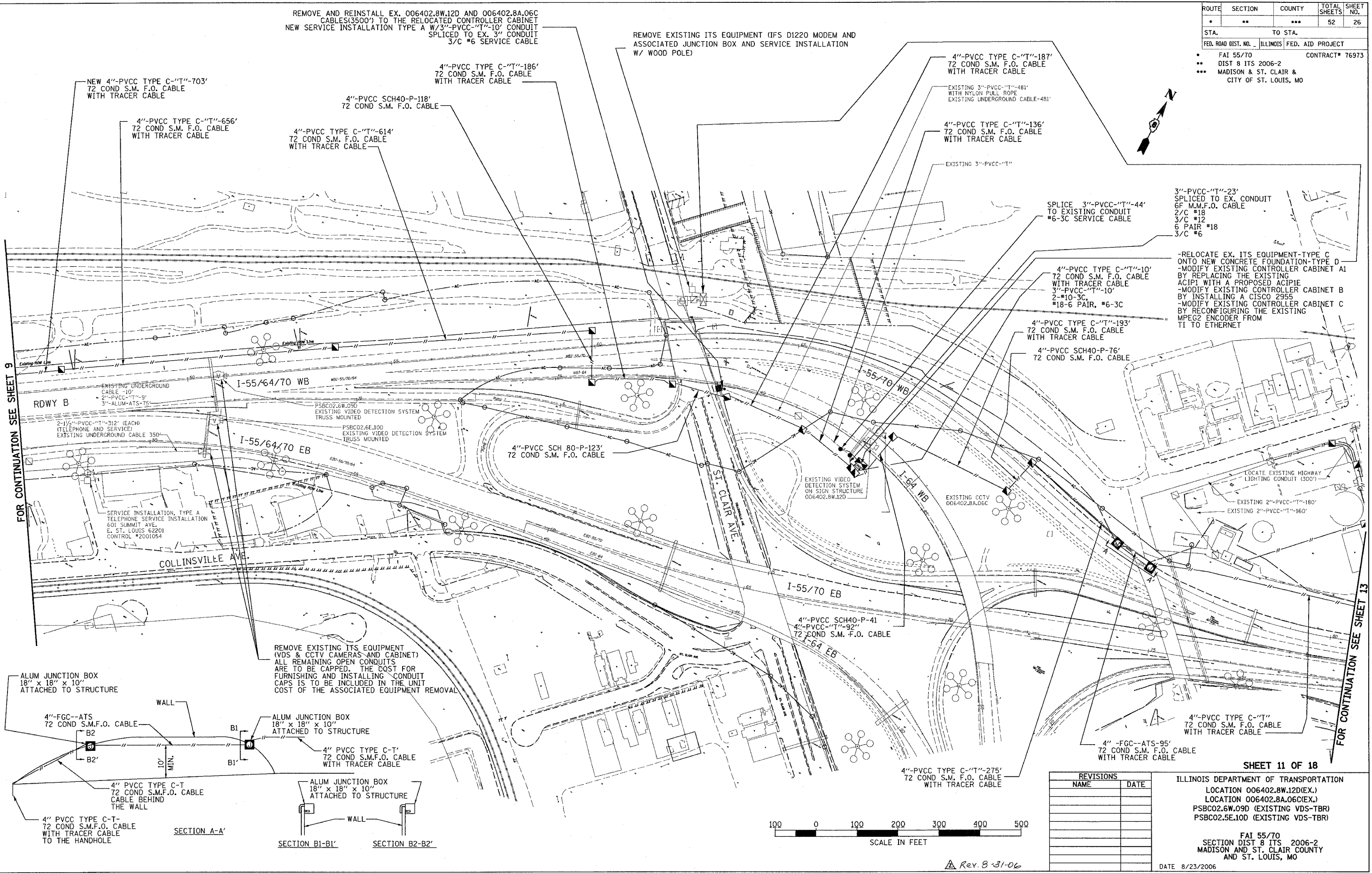


ROUTE	SECTION	COUNTY	TOTAL SHEETS	SHEET NO.
•	••	•••	52	26
STA.	TO STA.			
FED. ROAD DIST. NO.	ILLINOIS	FED. AID PROJECT		
•	FAI 55/70	CONTRACT# 76973		
••	DIST 8 ITS 2006-2			
•••	MADISON & ST. CLAIR & CITY OF ST. LOUIS, MO			



FOR CONTINUATION SEE SHEET 9

FOR CONTINUATION SEE SHEET 13

REMOVE AND REINSTALL EX. 006402.8W.12D AND 006402.8A.06C CABLES(3500') TO THE RELOCATED CONTROLLER CABINET NEW SERVICE INSTALLATION TYPE A W/3\"/>

REMOVE EXISTING ITS EQUIPMENT (IFS D1220 MODEM AND ASSOCIATED JUNCTION BOX AND SERVICE INSTALLATION W/ WOOD POLE)

3\"/>

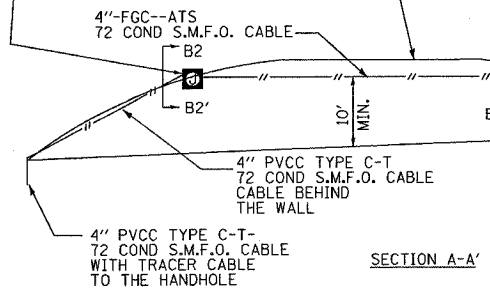
-RELOCATE EX. ITS EQUIPMENT-TYPE C ONTO NEW CONCRETE FOUNDATION-TYPE D -MODIFY EXISTING CONTROLLER CABINET A1 BY REPLACING THE EXISTING ACPIE WITH A PROPOSED ACPIE -MODIFY EXISTING CONTROLLER CABINET B BY INSTALLING A CISCO 2955 -MODIFY EXISTING CONTROLLER CABINET C BY RECONFIGURING THE EXISTING MPEG2 ENCODER FROM TI TO ETHERNET

REMOVE EXISTING ITS EQUIPMENT (VDS & CCTV CAMERAS AND CABINET) ALL REMAINING OPEN CONDUITS ARE TO BE CAPPED. THE COST FOR FURNISHING AND INSTALLING CONDUIT CAPS IS TO BE INCLUDED IN THE UNIT COST OF THE ASSOCIATED EQUIPMENT REMOVAL

ALUM JUNCTION BOX 18\"/>

ALUM JUNCTION BOX 18\"/>

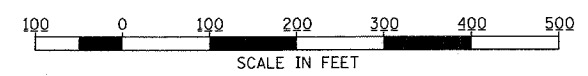
ALUM JUNCTION BOX 18\"/>



SECTION A-A'

SECTION B1-B1'

SECTION B2-B2'



Rev. B-31-06

REVISIONS	
NAME	DATE

SHEET 11 OF 18  
 ILLINOIS DEPARTMENT OF TRANSPORTATION  
 LOCATION 006402.8W.12D(EX.)  
 LOCATION 006402.8A.06C(EX.)  
 PSBC02.6W.09D (EXISTING VDS-TBR)  
 PSBC02.5E.10D (EXISTING VDS-TBR)  
 FAI 55/70  
 SECTION DIST 8 ITS 2006-2  
 MADISON AND ST. CLAIR COUNTY  
 AND ST. LOUIS, MO  
 DATE 8/23/2006

PLOT DATE = 8/23/2006  
 PLOT SCALE = 1/8\"/>