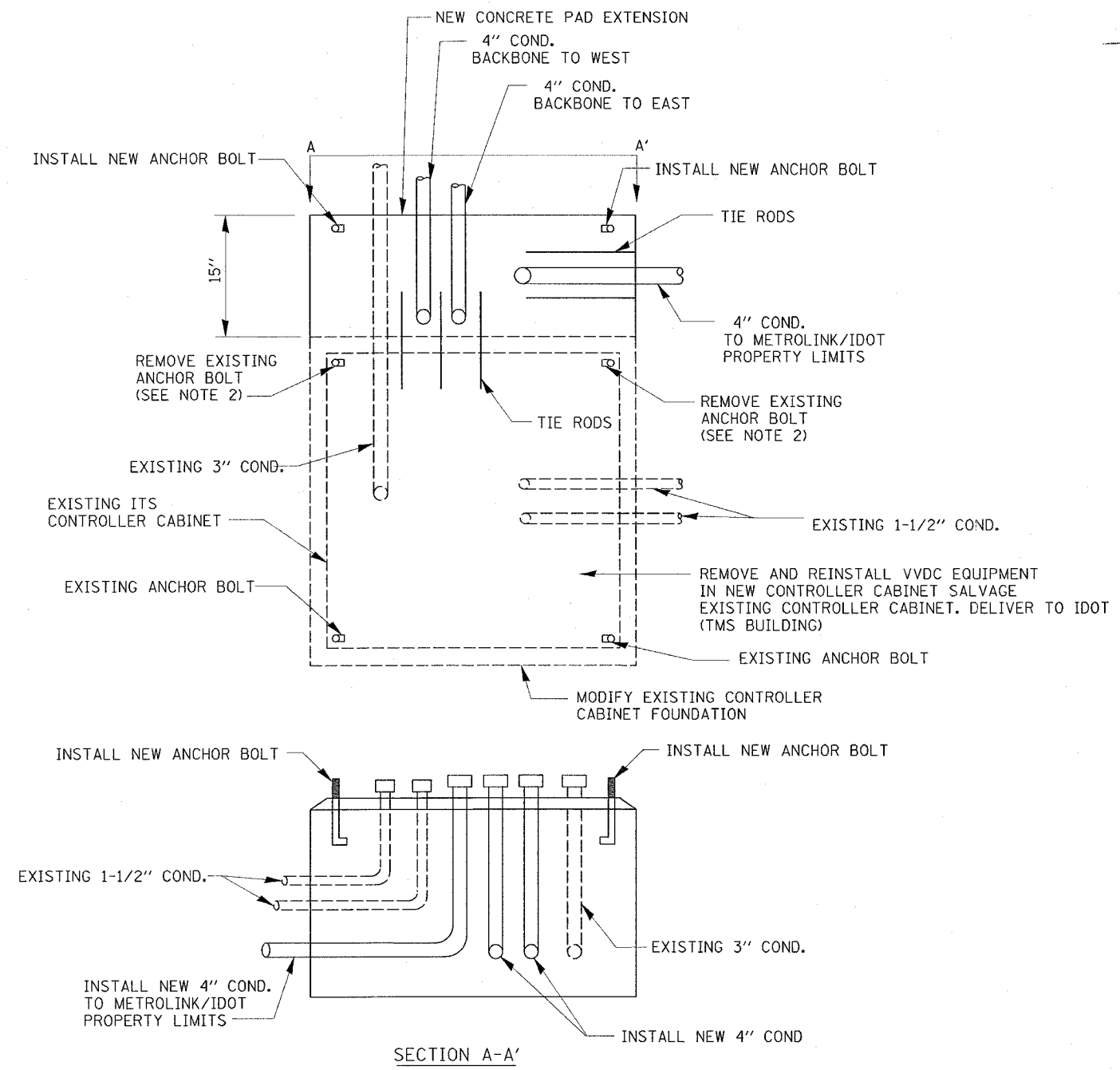


ROUTE	SECTION	COUNTY	TOTAL SHEETS	SHEET NO.
.	**	***	52	15
STA.		TO STA.		
FED. ROAD DIST. NO.		ILLINOIS FED. AID PROJECT		
FAI 55/70		CONTRACT# 76973		
DIST 8 ITS 2006-2				
MADISON & ST. CLAIR & CITY OF ST. LOUIS, MO				



- NOTES:**
1. SPLICING NEW CONDUIT TO EXISTING CONDUITS ARE INCIDENTAL TO 'MODIFY EXISTING CONTROLLER FOUNDATION'.
 2. EXISTING ANCHOR BOLTS SHALL BE CUT FLUSH WITH TOP OF FOUNDATION.

REVISIONS		ILLINOIS DEPARTMENT OF TRANSPORTATION
NAME	DATE	
		MODIFY EXISTING CONTROLLER CABINET FOUNDATION DETAIL FAI 55/70 SECTION DIST 8 ITS 2006-2 MADISON AND ST. CLAIR COUNTY AND ST. LOUIS, MO
DATE 5/23/2006		

PLOT DATE = 5/23/2006
 PLOT NAME = \\s11680\electrical\top\p11686.dgn
 PLOT SCALE = 1/8"=1'-0"
 REFERENCE = #REF#