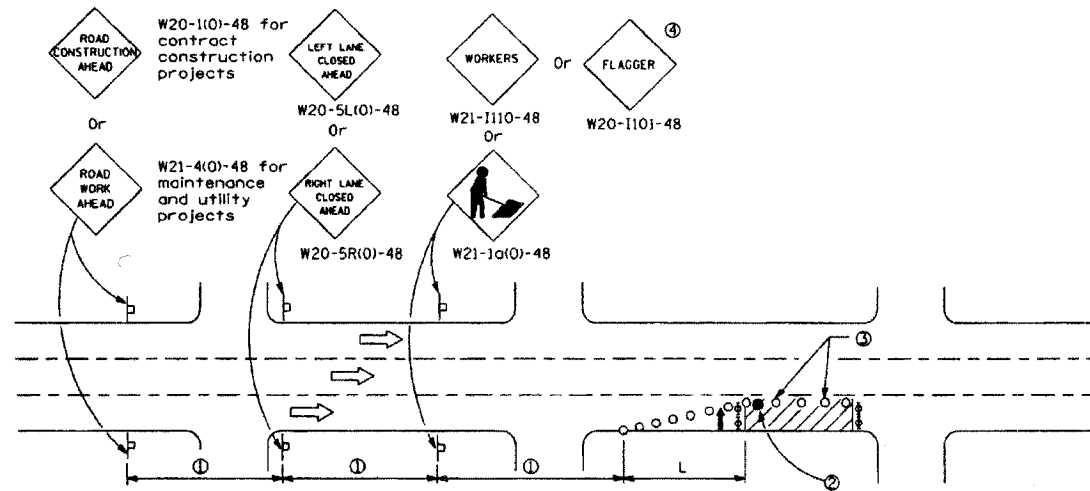


FAP RTE.	SECTION	COUNTY	TOTAL SHEETS	SHEET NO.
348	04-00040-00-LS	COOK	31	17
F.H.W.A. REG.		ILLINOIS	PROJECT: F-0348(028)	
CONTRACT NUMBER 83863				



SIGN SPACING	
Posted Speed	Sign Spacing
55	164 m (500')
50-45	115 m (350')
<45	60 m (200')

SYMBOLS

- ↑ Arrow board
- Cone, drum or barricade
- ⊥ Sign on portable or permanent support
- ▨ Work area
- ⊕ Barricade or drum with flashing light
- ⊚ Type III barricade with flashing lights
- Flagger with traffic control sign.

- ① Refer to SIGN SPACING TABLE for distances.
- ② Required for speeds > 40 MPH
- ③ Cones at 8 m (25') centers for 75 m (250'). Additional cones may be placed at 15 m (50') centers. When drums or Type I or Type II barricades are used, the interval between devices may be doubled.
- ④ Use flagger sign only when flagger is present.
- ⑤ For approved sideroad closures.

GENERAL NOTES

This Standard is used where at any-time, day or night, any vehicle, equipment, workers or their activities encroach on the pavement during shoulder operations or where construction requires lane closures in urban areas.

Calculate L as follows:

SPEED LIMIT	FORMULAS	
70 km/h (40 mph) or less:	Metric $L = \frac{WS^2}{150}$	(English) $L = \frac{WS^2}{60}$
80 km/h (45 mph) or greater:	$L = 0.65(W)(S)$ $L = (W)(S)$	

W = Width of offset in meters (feet).
S = Normal posted speed km/h (mph).

All dimensions are in millimeters (inches) unless otherwise shown.

Illinois Department of Transportation	
APPROVED	January 1, 2005
ENGINEER OF OPERATIONS	<i>[Signature]</i>
APPROVED	January 1, 2005
ENGINEER OF DESIGN AND ENVIRONMENT	<i>[Signature]</i>

DATE	REVISIONS	URBAN LANE CLOSURE, MULTILANE, 1W OR 2W WITH NONTRAVERSABLE MEDIAN (Sheet 1 of 2) STANDARD 701601-04
1-1-05	Added tangent distance to 2 lane closure taper.	
1-1-00	Rev. arrow board for single lane work.	
	Rev. GENERAL NOTES.	

MORRIS ENGINEERING, INC.
 5100 S. LINCOLN • SUITE 100 • LISLE, ILLINOIS 60532
 PHONE: (630)271-0770 • EMAIL: ECIVIL.COM
 DWG LOCATION: H\04-PH\3004\PLANS-ENG\REV-1
 DRAWN BY: CJS/CMM FLD. BK. / PG. NO.: . . .
 COMPLETION DATE: 4/26/06 JOB NO.: 04-PH-3004

HARLEM AVENUE MEDIAN IMPROVEMENTS

DETAIL SHEET

DATE	REVISIONS	BY	SHEET
6/1/06	PER IDOT 5/18/06	OSC	17
			OF 31 SHEETS