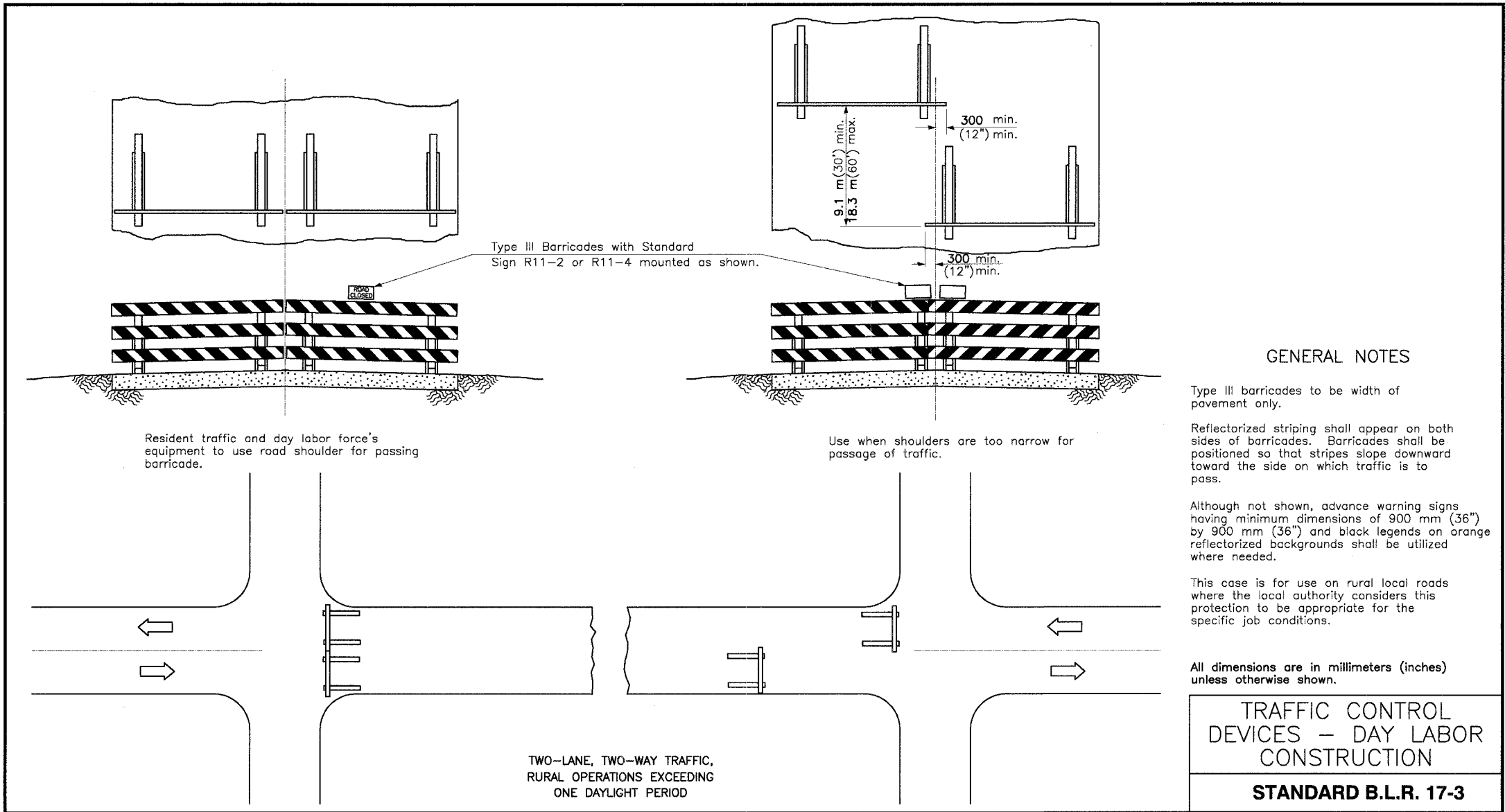


FAP RTE.	SECTION	COUNTY	TOTAL SHEETS	SHEET NO.
348	04-00040-00-LS	COOK	31	21
F.H.W.A. REG.	ILLINOIS	PROJECT:	F-0348(02B)	
CONTRACT NUMBER 83863				



GENERAL NOTES

Type III barricades to be width of pavement only.

Reflectorized striping shall appear on both sides of barricades. Barricades shall be positioned so that stripes slope downward toward the side on which traffic is to pass.

Although not shown, advance warning signs having minimum dimensions of 900 mm (36") by 900 mm (36") and black legends on orange reflectorized backgrounds shall be utilized where needed.

This case is for use on rural local roads where the local authority considers this protection to be appropriate for the specific job conditions.

All dimensions are in millimeters (inches) unless otherwise shown.

MORRIS ENGINEERING, INC. 5100 S. LINCOLN • SUITE 100 • LISLE, ILLINOIS 60532 PHONE: (630)271-0770 • EMAIL: ECIVIL.COM DWG LOCATION: H\04-PH\3004\PLANS-ENG\REV-1 DRAWN BY: CJS/CMM FLD. BK. / PG. NO. : . COMPLETION DATE: 4/26/06 JOB NO. : 04-PH-3004	HARLEM AVENUE MEDIAN IMPROVEMENTS			
	DETAIL SHEET			
	DATE	REVISIONS	BY	SHEET
1	6/1/06	PER IDOT 5/18/06	OSC	21 OF 31 SHEETS
2				
3				