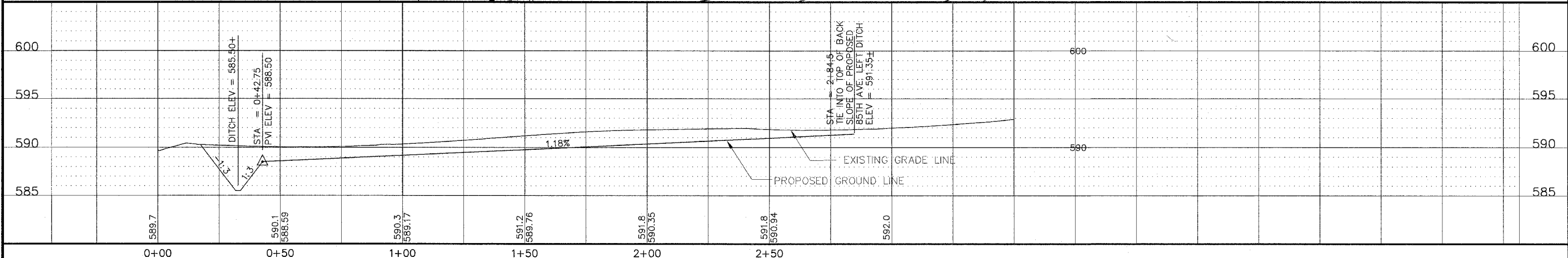
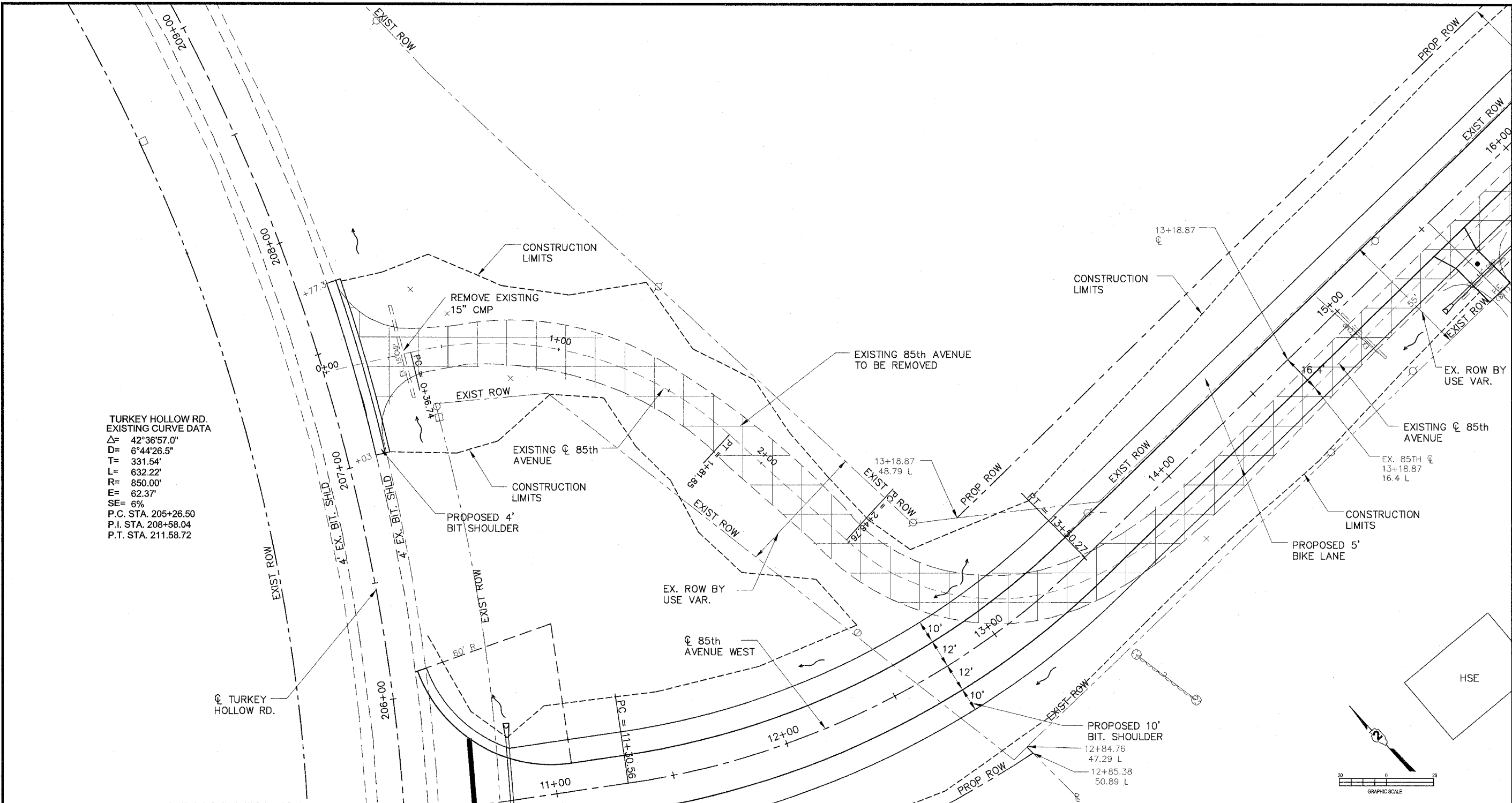


TURKEY HOLLOW RD.
 EXISTING CURVE DATA
 Δ= 42°36'57.0"
 D= 6°44'26.5"
 T= 331.54'
 L= 632.22'
 R= 850.00'
 E= 62.37'
 SE= 6%
 P.C. STA. 205+26.50
 P.I. STA. 208+58.04
 P.T. STA. 211.58.72



REVISIONS	
No.	DESCRIPTION

Missman
 STANLEY & ASSOCIATES, P.C.
 Civil Engineering-Environmental Services-GIS-Landscape Architecture-Surveying
 1011 27th Avenue
 Rock Island, Illinois 61201-6040
 Phone (309) 788-7844
 Fax (309) 788-7891

85TH AVE WEST
 Rock Island, Illinois
**OLD 85TH AVE FINAL GRADING
 PLAN AND PROFILE**

Missman Project No:
 A04-T023
 File Name:
 2037A.DWG
 © COPYRIGHT 2003
 ALL RIGHTS RESERVED
 Drawn By: WEF
 Checked By: DRM
 Date: MAY,2006
33
 Sheet 33 of 94

G:\IN\2004\A04T023-85thAve West.dwg, 6/6/2006 8:52:01 AM