

| F.A.S. RTE. | SECTION | COUNTY | TOTAL SHEETS | SHEET NO. |
|-------------|----------------|--------|--------------|-----------|
| 489 | 04-00044-08-WR | McLEAN | 9 | 1 |

INDEX OF SHEETS

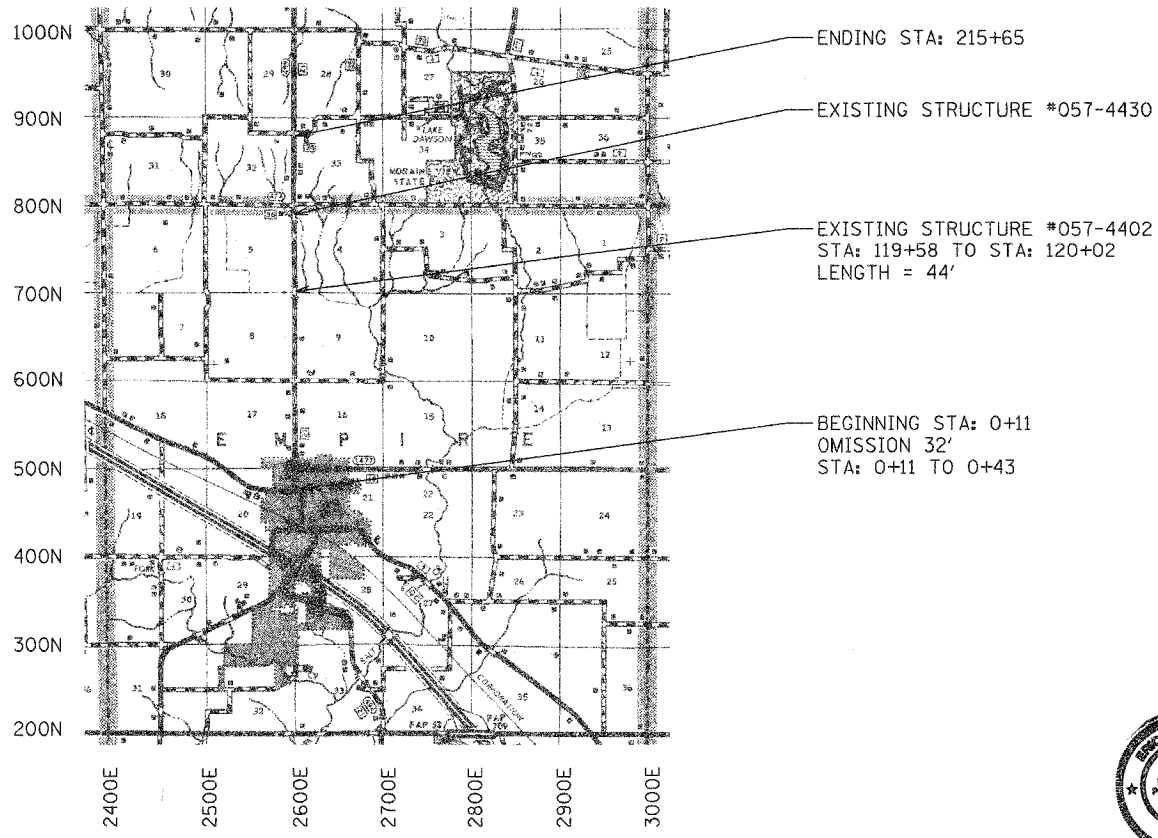
1. Cover Sheet
2. Summary of Quantities & General Notes
- 3-5. Typical Cross Sections
6. Urban Details
7. Rural Details
8. Guard Rail Plan View
9. Steel Railing Retrofit Details

STATE OF ILLINOIS
DEPARTMENT OF TRANSPORTATION
DIVISION OF HIGHWAYS

PLANS FOR PROPOSED
McLEAN COUNTY FEDERAL AID SECONDARY (STP-SR)
LEXINGTON-LEROY RD (CH 21)
F.A.S. ROUTE 489 SECTION 04-00044-08-WR
PROJECT #SR-489(107)
JOB #C-95-309-06

STATE STANDARD DETAILS

- 630001-06 STEEL PLATE BEAM GUARDRAIL
- 631026-02 TRAFFIC BARRIER TERMINAL TYPE 5 & 5A
- 635006-02 REFLECTOR AND TERMINAL MARKER PLACEMENT
- 701001-01 OFF-RD OPERATIONS 2L, 2W, MORE THAN 4.5M (15') AWAY
- 701006-02 OFF-RD OPERATIONS 2L, 2W, 4.5M (15') TO 600mm (24") FROM PAVEMENT EDGE
- 701011-01 OFF-RD MOVING OPERATIONS, 2L, 2W, DAY ONLY
- 701201-02 LANE CLOSURE, 2L, 2W, DAY ONLY, FOR SPEEDS ≥ 45 MPH
- 701301-02 LANE CLOSURE, 2L, 2W, SHORT TIME OPERATIONS
- 701306-01 LANE CLOSURE, 2L, 2W, SLOW MOVING OPERATIONS DAY ONLY, FOR SPEEDS ≥ 45 MPH
- 701326-02 LANE CLOSURE, 2L, 2W, PAVEMENT WIDENING, FOR SPEEDS ≥ 45 MPH
- 701501-03 URBAN LANE CLOSURE, 2L, 2W, UNDIVIDED
- 702001-06 TRAFFIC CONTROL DEVICES
- 781001-02 TYPICAL APPLICATIONS RAISED REFLECTIVE PAVEMENT MARKERS
- B.L.R. 23-1 TRAFFIC BARRIER TERMINAL TYPE 1



Eric Schmitt
 ILLINOIS PROFESSIONAL ENGINEER #55820
 EXPIRES 11-30-07

| | |
|--|--|
| APPROVED <i>7-11 2006</i> <i>Eric Schmitt</i> COUNTY ENGINEER | PASSED <i>7/17 2006</i> <i>David A. Seal</i> DISTRICT FIVE ENGINEER OF LOCAL ROADS & STREETS |
| Releasing For Bid Based on Limited Review <i>July 18 2006</i> <i>Eric Schmitt</i> DEPUTY DIRECTOR OF HIGHWAYS, REGION THREE ENGINEER | |
| STATE OF ILLINOIS DEPARTMENT OF TRANSPORTATION | |

THESE PLANS ARE NOT TO SCALE

J.U.L.I.E.
 JOINT UTILITY LOCATION INFORMATION FOR EXCAVATION
 1-800-892-0123

CONTRACT NO. 91361

- NOTE: THE TOTAL LENGTH OF THE PROPOSED PROJECT IS 21,554' FEET WITH A NET LENGTH OF 21,522 FEET (4.076 MILES)
- NOTE: THESE PLANS MEET THE MINIMUM REQUIREMENTS FOR A 3-R IMPROVEMENT.
- NOTE: CURRENT ADT: 1475
 FUNCTIONAL CLASSIFICATION: MAJOR COLLECTOR