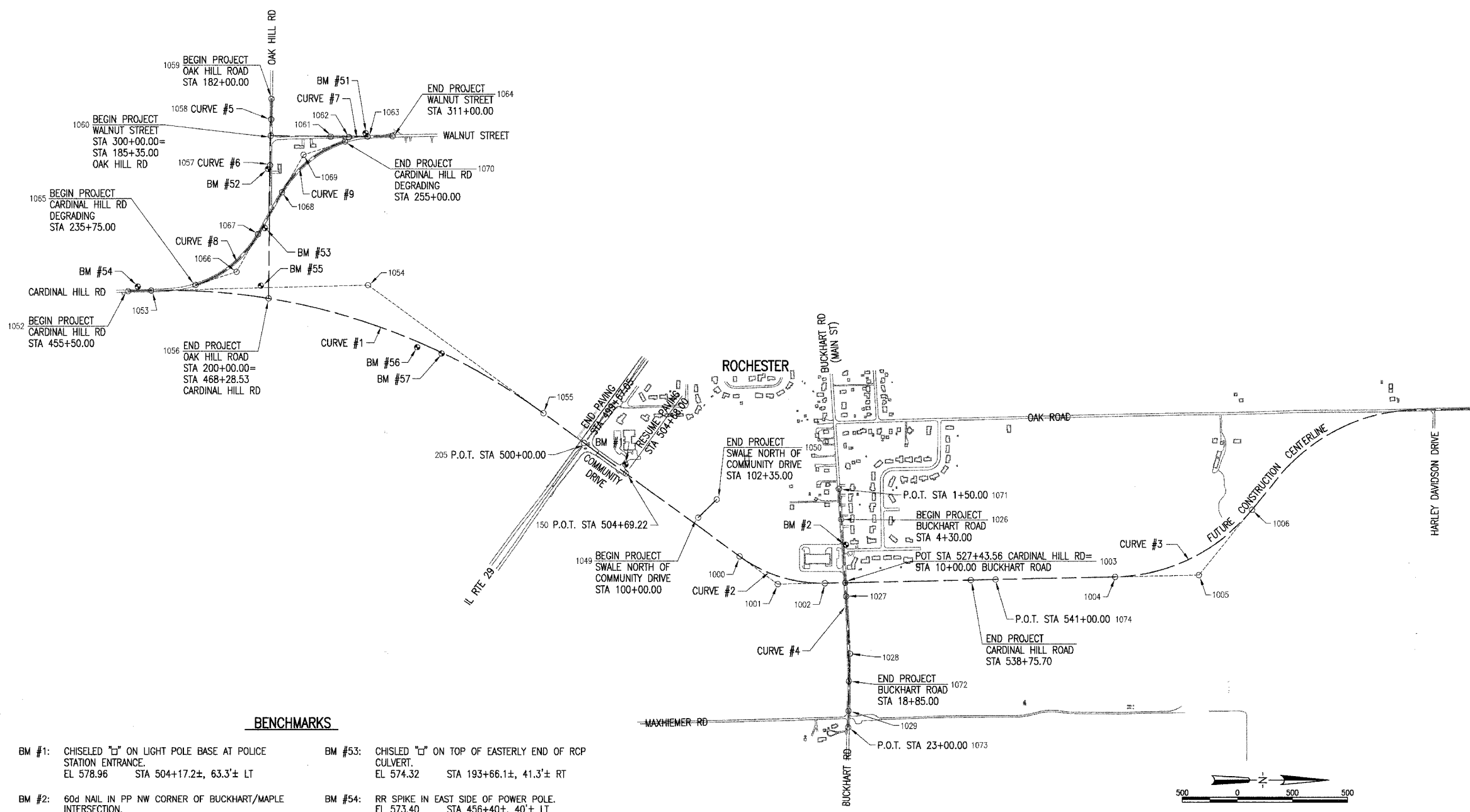


FAU. RTE.	SECTION	COUNTY	TOTAL SHEETS	SHEET NO.
B075	03-00167-04-FP	SANGAMON	109	15
STA. _____ TO STA. _____		FED. AID PROJECT		

CURVE #1	CURVE #2	CURVE #3	CURVE #4	CURVE #5	CURVE #6	CURVE #7	CURVE #8	CURVE #9
1054 P.I. STA 477+23.91 Δ = 37°-24'-48" R D _a = 00°-59'-16" T = 1963.94' R = 5800.00' L = 3787.31' E = 323.48'	1001 P.I. STA 521+64.00 Δ = 37°-14'-02" L D _a = 04°-31'-46" T = 426.14' R = 1265.00' L = 822.07' E = 69.85'	1005 P.I. STA 559+44.60 Δ = 49°-25'-10" L D _a = 03°-28'-21" T = 759.26' R = 1650.00' L = 1031.84' E = 166.31'	1028 P.I. STA 16+36.88 Δ = 5°-25'-37" R D _a = 00°-31'-33" T = 516.31' R = 10894.00' L = 1031.84' E = 12.23'	1058 P.I. STA 183+85.00 NO CURVE Δ = 00°-40'-05" R	1057 P.I. STA 188+00.00 NO CURVE Δ = 00°-48'-52" L	1062 P.I. STA 307+08.02 Δ = 2°-20'-04" L D _a = 00°-41'-55" T = 167.08' R = 8200.00' L = 334.12' E = 1.70'	1066 P.I. STA 239+64.67 Δ = 42°-08'-14" L D _a = 5°-39'-52" T = 389.67' R = 1011.51' L = 743.90' E = 72.46'	1069 P.I. STA 251+44.28 Δ = 42°-20'-11" R D _a = 5°-39'-52" T = 391.69' R = 1011.51' L = 747.42' E = 73.19'
1053 P.C. STA 457+59.97 1055 P.T. STA 495+47.28 S.E. = 2.70% S.E.A.	1000 P.C. STA 517+37.86 1002 P.T. STA 525+59.93 S.E. = 4.90% S.E.A.	1004 P.C. STA 551+85.34 1006 P.T. STA 566+08.52 S.E. = 6.00% S.E.A.	1027 P.C. STA 11+20.57 1029 P.T. STA 21+52.41 S.E. = NONE	STA 550+02.34 TO STA 552+52.34	STA 188+00.00 TO STA 188+00.00	1061 P.C. STA 305+40.94 1063 P.T. STA 308+75.06 S.E. = NONE	1065 P.C. STA 235+75.00 1067 P.T. STA 243+18.90	1068 P.C. STA 247+52.58 1070 P.T. STA 255+00.00
STA 456+43.00 TO STA 458+18.00 STA 494+89.00 TO STA 496+64.00	STA 515+97.86 TO STA 518+07.86 STA 524+89.93 TO STA 526+99.93	STA 565+41.52 TO STA 567+99.33						

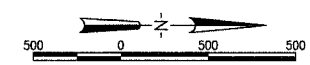
CENTERLINE POINTS

PT #	NORTH	EAST
150	1121569.93	2476994.16
205	1121190.15	2476718.61
1000	1122596.78	2477739.17
1001	1122941.69	2477989.42
1002	1123367.73	2477979.96
1003	1123551.31	2477975.89
1004	1125992.49	2477921.69
1005	1126751.56	2477904.84
1006	1127232.55	2477317.37
1026	1123512.43	2477407.22
1027	1123559.53	2478096.18
1028	1123594.75	2478611.28
1029	1123581.10	2479127.41
1049	1122221.54	2477391.56
1050	1122388.89	2477226.58
1052	1117060.88	2475354.47
1053	1117270.78	2475349.15
1054	1119234.09	2475299.42
1055	1120823.71	2476452.75
1056	1118335.45	2475420.37
1057	1118348.19	2474220.44
1058	1118358.49	2473805.57
1059	1118360.93	2473620.58
1060	1118354.77	2473955.52
1061	1118895.62	2473965.13
1062	1119062.68	2473968.10
1063	1119229.72	2473964.26
1064	1119454.60	2473959.09
1065	1117672.75	2475297.53
1066	1118043.73	2475178.26
1067	1118238.80	2474840.93
1068	1118455.91	2474465.51
1069	1118652.00	2474126.43
1070	1119025.31	2474007.84
1071	1123493.33	2477127.87
1072	1123584.89	2478860.03
1073	1123577.20	2479274.94
1074	1124907.42	2477945.78



BENCHMARKS

BM #1: CHISELED "I" ON LIGHT POLE BASE AT POLICE STATION ENTRANCE. EL 578.96 STA 504+17.2±, 63.3'± LT	BM #53: CHISELED "I" ON TOP OF EASTERLY END OF RCP CULVERT. EL 574.32 STA 193+66.1±, 41.3'± RT
BM #2: 60d NAIL IN PP NW CORNER OF BUCKHART/MAPLE INTERSECTION. EL 578.32 STA 6+57.8±, 29.6'± LT	BM #54: RR SPIKE IN EAST SIDE OF POWER POLE. EL 573.40 STA 456+40±, 40'± LT
BM #51: RR SPIKE IN POWER POLE WEST OF CARDINAL HILL ROAD & WALNUT STREET INTERSECTION. EL 575.99 STA 308+58.1±, 30.7'± LT	BM #55: 60d NAIL IN NORTH FACE OF POWER POLE. EL 569.95 STA 467+85±, 155'± LT
BM #52: RR SPIKE IN 2nd POWER POLE WEST OF CARDINAL HILL ROAD & OAK HILL ROAD INTERSECTION. EL 578.57 STA 188+32.0±, 16.6'± RT	BM #56: 60d NAIL IN EAST FACE OF 18" TREE 200'± SOUTH OF BLACK BRANCH CREEK. EL 563.11 STA 482+50±, 50'± RT
	BM #57: 60d NAIL IN WEST FACE OF 24" MAPLE TREE NORTH OF BLACK BRANCH CREEK FORK. EL 562.47 STA 484+75±, 10'± RT



NOTE: ALL COORDINATES ARE GROUND COORDINATES.

GEOMETRIC CONTROL
SEC. 03-00167-04-FP
CARDINAL HILL ROAD (C.H. 37)
SANGAMON COUNTY



JOB NO.
03S2035B
DATE
6/21/06

LAYOUT: BJB 3/15/04
 DRAWN: BJB 7/22/04
 REVIEWED: LDK 7/21/04
 I:\03\00167\03S2035B\CAD\1\03S2035B.DWG JUL 21, 2006 9:40AM BJB