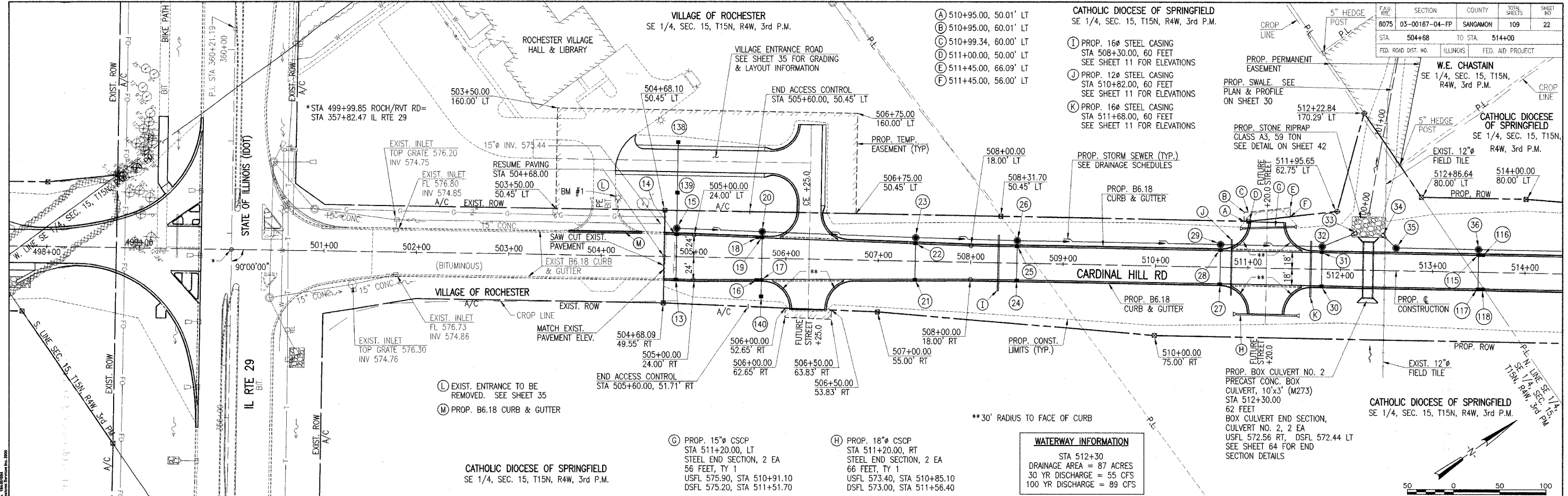


Xrefs:
 PLAN-E
 GRID-E
 C-PP001
 C-RP
 C-TP
 C-ROW



SECTION	COUNTY	TOTAL SHEETS	SHEET NO.
8075 03-00167-04-FP	SANGAMON	109	22

- (A) 510+95.00, 50.01' LT
- (B) 510+95.00, 60.01' LT
- (C) 510+99.34, 60.00' LT
- (D) 511+00.00, 50.00' LT
- (E) 511+45.00, 66.09' LT
- (F) 511+45.00, 56.00' LT

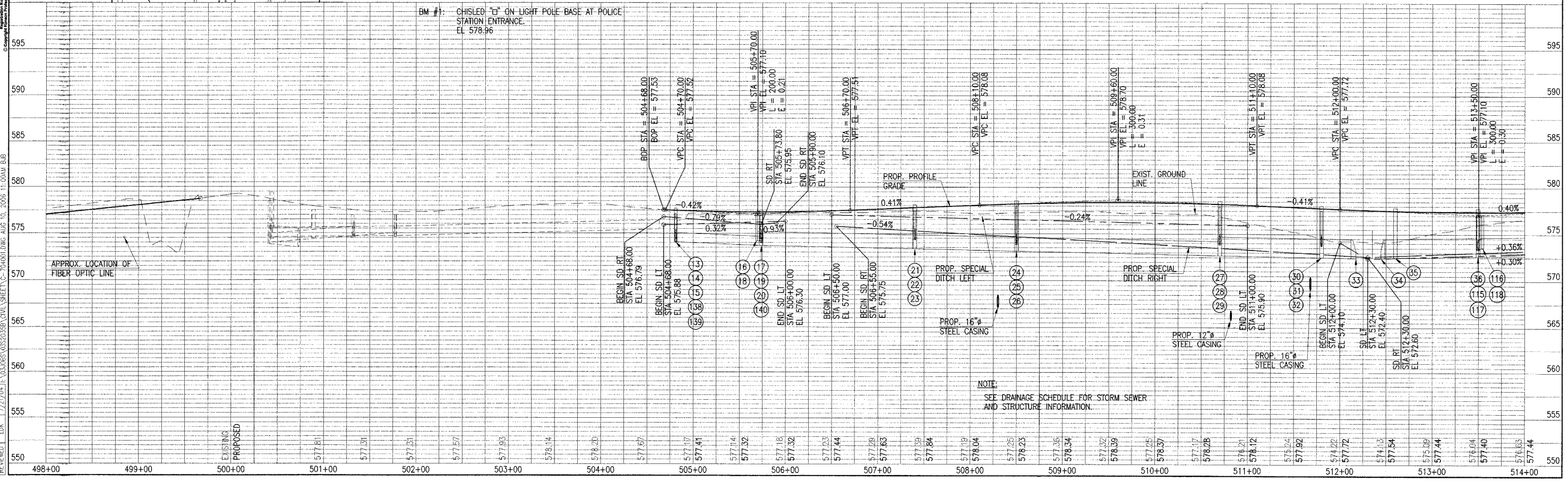
- (I) PROP. 16" STEEL CASING STA 508+30.00, 60 FEET SEE SHEET 11 FOR ELEVATIONS
- (J) PROP. 12" STEEL CASING STA 510+82.00, 60 FEET SEE SHEET 11 FOR ELEVATIONS
- (K) PROP. 16" STEEL CASING STA 511+68.00, 60 FEET SEE SHEET 11 FOR ELEVATIONS

- (L) EXIST. ENTRANCE TO BE REMOVED. SEE SHEET 35
- (M) PROP. B6.18 CURB & GUTTER

(C) PROP. 15" CSCP STA 511+20.00, LT STEEL END SECTION, 2 EA 56 FEET, TY 1 USFL 575.90, STA 510+91.10 DSFL 575.20, STA 511+51.70

(H) PROP. 18" CSCP STA 511+20.00, RT STEEL END SECTION, 2 EA 66 FEET, TY 1 USFL 573.40, STA 510+85.10 DSFL 573.00, STA 511+56.40

WATERWAY INFORMATION
 STA 512+30
 DRAINAGE AREA = 87 ACRES
 30 YR DISCHARGE = 55 CFS
 100 YR DISCHARGE = 89 CFS



HANSON
 LAYOUT: B/B 3/15/04
 DRAWN: B/B 7/22/04
 REVIEWED: LDK 7/21/04
 PROJECT: 03-00167-04-FP SHEET C-704001.DWG AUG. 10, 2005 11:00AM B.B.