

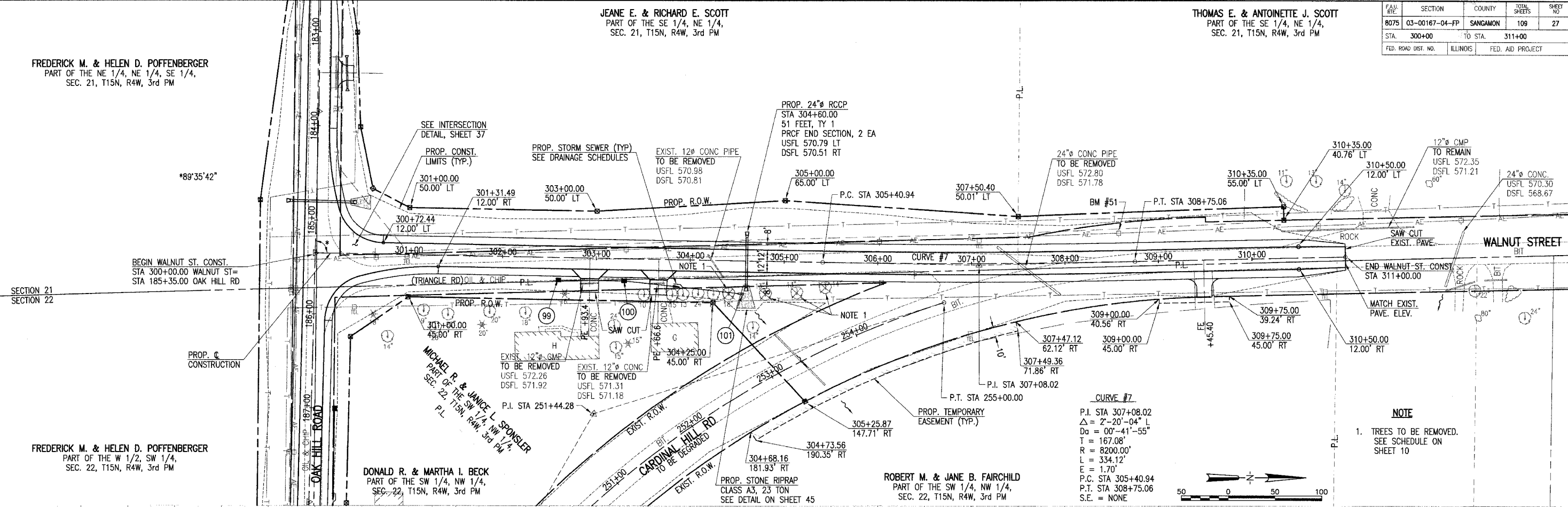
Xrefs:
 PLAN-E
 GRID-E
 C-TP
 C-RP
 C-PP004
 C-ROW

FREDERICK M. & HELEN D. POFFENBERGER
 PART OF THE NE 1/4, NE 1/4, SE 1/4,
 SEC. 21, T15N, R4W, 3rd PM

JEANE E. & RICHARD E. SCOTT
 PART OF THE SE 1/4, NE 1/4,
 SEC. 21, T15N, R4W, 3rd PM

THOMAS E. & ANTOINETTE J. SCOTT
 PART OF THE SE 1/4, NE 1/4,
 SEC. 21, T15N, R4W, 3rd PM

FAU RITE	SECTION	COUNTY	TOTAL SHEETS	SHEET NO
8075	03-00167-04-FP	SANGAMON	109	27
STA.	300+00	TO STA.	311+00	
FED. ROAD DIST. NO.		ILLINOIS	FED. AID PROJECT	



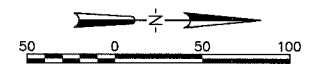
FREDERICK M. & HELEN D. POFFENBERGER
 PART OF THE W 1/2, SW 1/4,
 SEC. 22, T15N, R4W, 3rd PM

DONALD R. & MARTHA I. BECK
 PART OF THE SW 1/4, NW 1/4,
 SEC. 22, T15N, R4W, 3rd PM

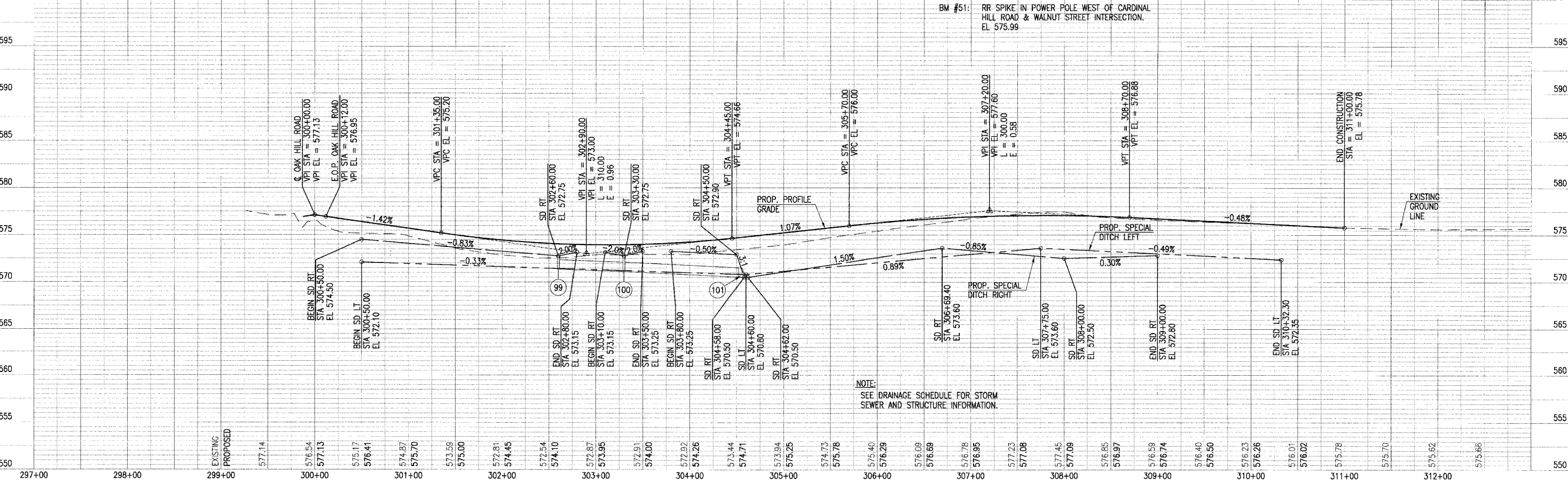
ROBERT M. & JANE B. FAIRCHILD
 PART OF THE SW 1/4, NW 1/4,
 SEC. 22, T15N, R4W, 3rd PM

CURVE #7
 P.I. STA 307+08.02
 $\Delta = 2^{\circ}20'04''$ L
 $D_a = 00^{\circ}41'55''$
 $T = 167.08'$
 $R = 8200.0'$
 $L = 334.12'$
 $E = 1.70'$
 P.C. STA 305+40.94
 P.T. STA 308+75.06
 S.E. = NONE

NOTE
 1. TREES TO BE REMOVED.
 SEE SCHEDULE ON SHEET 10



LAYOUT B.B. 3/15/04
 DRAWN B.B. 7/22/04
 REVIEWED CLK 7/27/04
 I:\03\0085\03520\38\0\CIVIL\004\DWG JUL 21, 2006 9:47AM B.B.



NOTE:
 SEE DRAINAGE SCHEDULE FOR STORM SEWER AND STRUCTURE INFORMATION.

WALNUT STREET