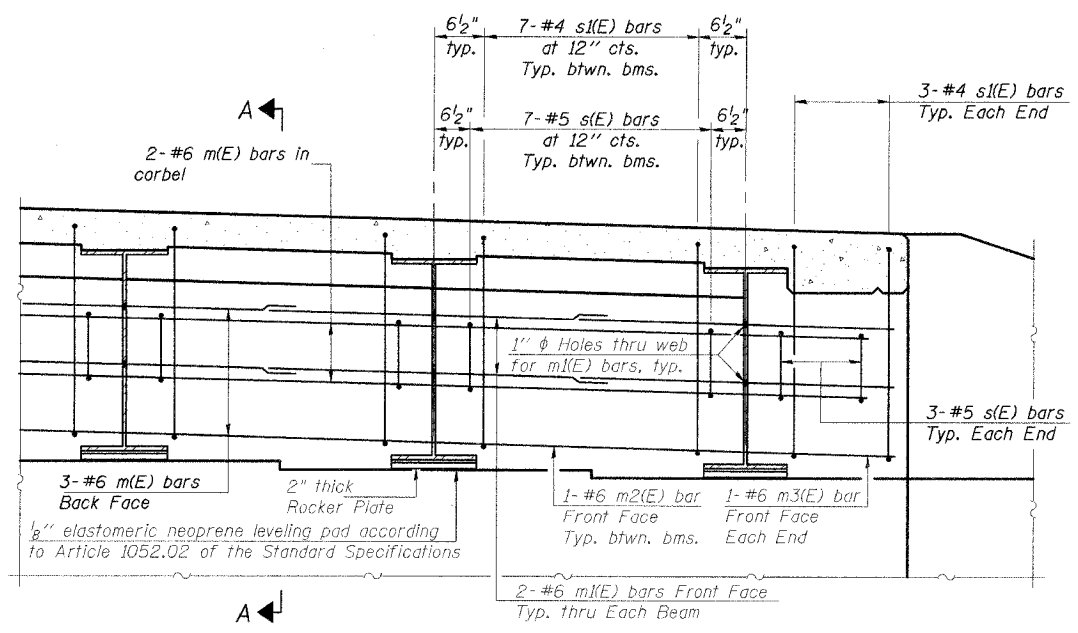
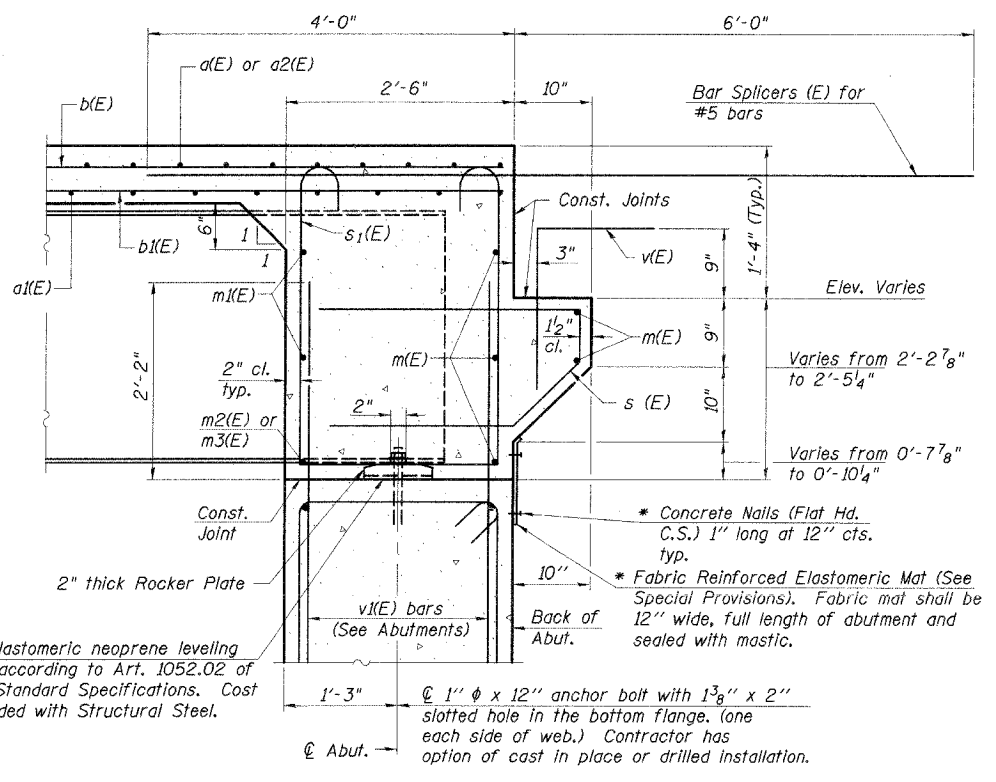


F.A.U. RTE.	SECTION	COUNTY	TOTAL SHEETS	SHEET NO.
8075	03-00167-04-FP	SANGAMON	109	69
STA.		TO STA.		
FED. ROAD DIST. NO.		ILLINOIS FED. AID PROJECT		



DIAPHRAGM ELEVATION AT ABUTMENT



SECTION A-A

*Cost included with Concrete Superstructure.

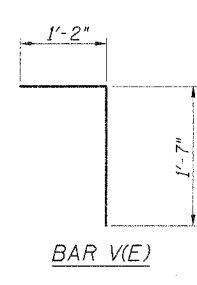
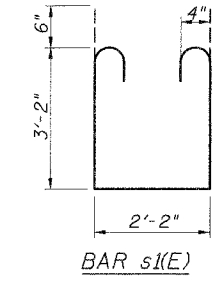
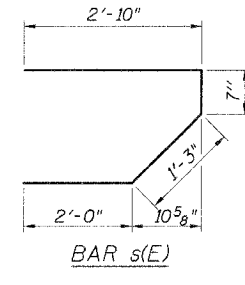
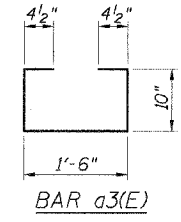
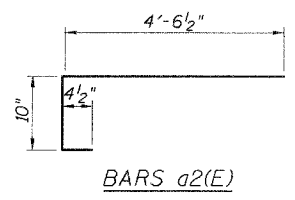
Notes:
 Reinforcement bars in diaphragm are billed with superstructure.
 Concrete in diaphragm is included with Concrete Superstructure.
 For anchor bolt details see sheet 10 of 11.

MIN. BAR LAP
 #4 bar = 1'-8"
 #5 bar = 2'-2"
 #6 bar = 2'-9"

SUPERSTRUCTURE BILL OF MATERIAL

Bar	No.	Size	Length	Shape
a(E)	322	#5	20'-11"	—
a1(E)	108	#5	39'-8"	—
a2(E)	162	#5	5'-9"	—
a3(E)	162	#4	3'-11"	—
b(E)	123	#5	28'-0"	—
b1(E)	144	#5	21'-7"	—
m(E)	10	#6	39'-8"	—
m1(E)	24	#6	9'-10"	—
m2(E)	10	#6	6'-10"	—
m3(E)	4	#6	2'-0"	—
s(E)	82	#5	6'-8"	—
s1(E)	82	#4	9'-6"	—
v(E)	82	#5	2'-9"	—
Reinforcement Bars, Epoxy Coated		Pound	22110	
Concrete Superstructure		Cu. Yds.	107.9	

Reinforcement bars designated (E) shall be epoxy coated.



SUPERSTRUCTURE DETAILS
 CARDINAL ROAD over BLACK BRANCH CREEK
 SECTION 03-00167-04-FP
 SANGAMON COUNTY
 STATION 484+47
 STRUCTURE NO. 084-3640

© Copyright Hanson Professional Services Inc. 2006



JOB NO.
03S2035B
DATE
6/21/06

07/27/2006
 149842 AM
 I:\03\035\03\2035\Structures\Black Branch Creek\Bridge Plans\FDS-SuperDetail.dgn
 M.M.K. 3/13/04
 P.M. 3/16/04
 REVIEWED G.B.R. 3/20/04