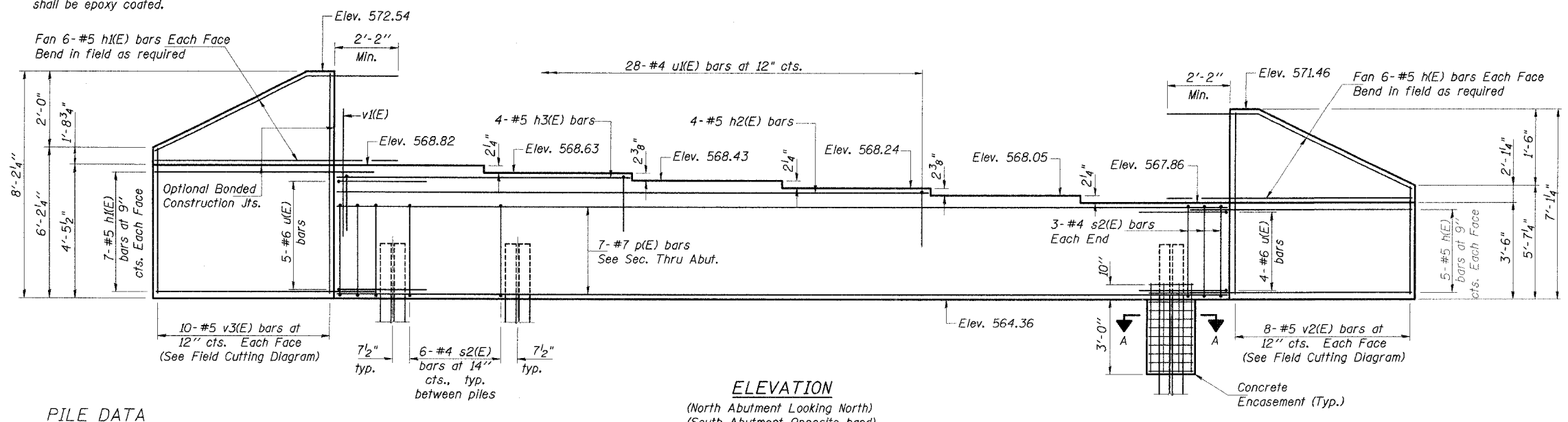


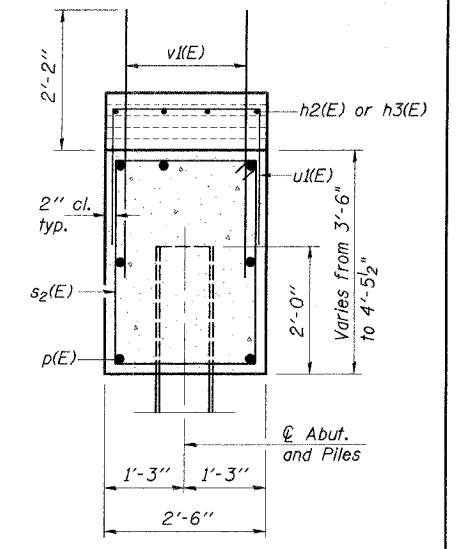
F.A.U. RTE.	SECTION	COUNTY	TOTAL SHEETS	SHEET NO.
8075	03-00167-04-FP	SANGAMON	109	72
STA.	TO STA.			
FED. ROAD DIST. NO.	ILLINOIS	FED. AID PROJECT		

Sheet 8 of 11

Notes: Pour steps monolithically with cap.
Reinforcement bars designated (E)
shall be epoxy coated.



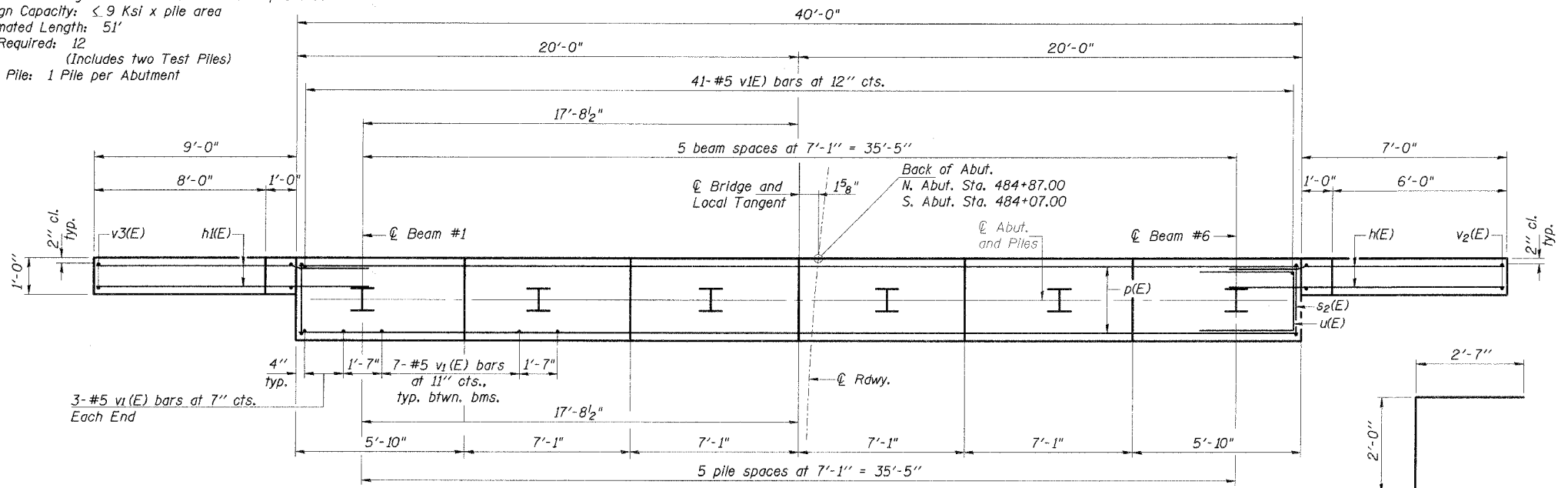
ELEVATION
(North Abutment Looking North)
(South Abutment Opposite hand)



SEC. THRU ABUT.

PILE DATA

Pile Type: HP 12x53
Required Bearing: Refusal = 1.5 x 9 Ksi x pile area
Design Capacity: < 9 Ksi x pile area
Estimated Length: 51'
No. Required: 12
(Includes two Test Piles)
Test Pile: 1 Pile per Abutment



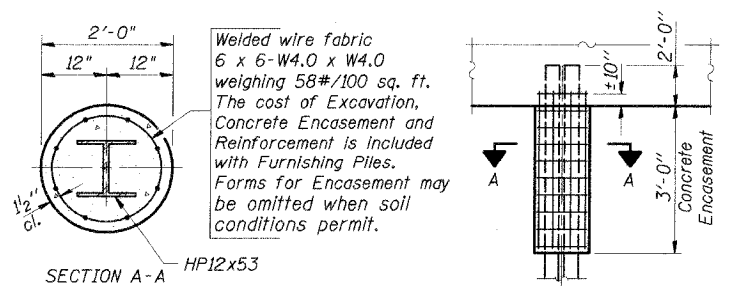
PLAN

BILL OF MATERIAL - 2 ABUTS.

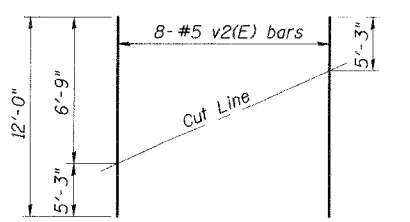
Bar	No.	Size	Length	Shape
h(E)	44	#5	9'-4"	—
h1(E)	52	#5	11'-5"	—
h2(E)	8	#5	26'-9"	—
h3(E)	8	#5	12'-7"	—
p(E)	14	#7	39'-8"	—
s2(E)	72	#4	11'-5"	□
u(E)	18	#6	7'-2"	□
u1(E)	56	#4	8'-2"	□
v1(E)	164	#5	4'-4"	—
v2(E)	16	#5	12'-0"	—
v3(E)	20	#5	13'-8"	—
Structure Excavation	Cu. Yd.	242		
Concrete Structures	Cu. Yd.	37.7		
Reinforcement Bars, Epoxy Coated	Pound	4790		
Furnishing Steel Piles HP12x53	Ft.	510		
Driving Steel Piles	Ft.	510		
Test Pile Steel HP12x53	Each	2		

MIN. BAR LAPS

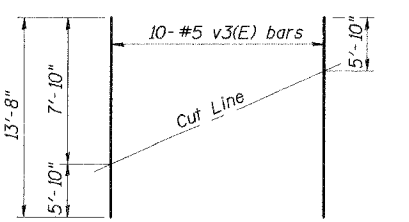
- #5 Bar - 2'-2"
- #6 Bar - 2'-7"
- #7 Bar - 3'-5"



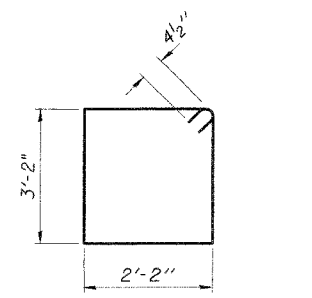
PILE ENCASEMENT DETAIL



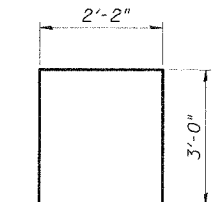
FIELD CUTTING DIAGRAM v2(E)
Order v2(E) full length. Cut as shown and use remainder of bars in opposite face.



FIELD CUTTING DIAGRAM v3(E)
Order v3(E) full length. Cut as shown and use remainder of bars in opposite face.



BAR s2(E)



BAR u1(E)

07/27/2006
 10:17:07 AM
 6:03:05S0382035NStructure/Black Branch Creek/Bridge Plans/FP/03-Abutments.dwg
 M.A.M. 3/13/04
 R.A.D. 3/16/04
 G.B.R. 3/20/04

ABUTMENT DETAILS
CARDINAL ROAD over BLACK BRANCH CREEK
SECTION 03-00167-04-FP
SANGAMON COUNTY
STATION 484+47
STRUCTURE NO. 084-3640

© Copyright Hanson Professional Services Inc. 2006



J&S 2035B
DATE 6/21/06