

LETTING ITEM # 1A

ENGINEERS
ARCHITECTS
SURVEYORS
SCIENTISTS



Letting # PO 015
Total Sheets: 10

CONSTRUCTION PLANS FOR PONTIAC MUNICIPAL AIRPORT PONTIAC, ILLINOIS

ILLINOIS PROJECT NO. PNT-3397

WATERMAIN IMPROVEMENTS

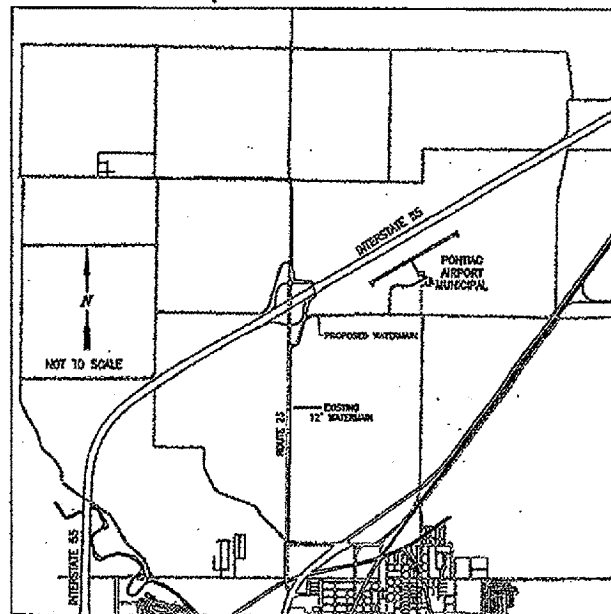
OCTOBER 12, 2004

REVISED JULY 11, 2006

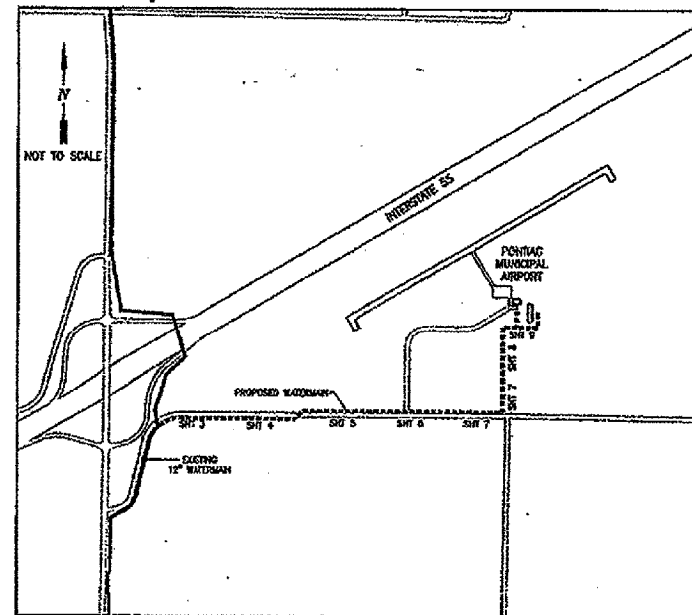
Index of Drawings

SHEET NO.	DESCRIPTION
1	COVER SHEET
2	LEGEND, BENCHMARKS, GENERAL NOTES & SUMMARY OF QUANTITIES
3	WATERMAIN PLAN EXISTING MAIN TO STA. 213+00
4	WATERMAIN PLAN STA. 213+00 TO STA. 223+00
5	WATERMAIN PLAN STA. 223+00 TO STA. 233+00
6	WATERMAIN PLAN & PROFILE STA. 233+00 TO STA. 243+00
7	WATERMAIN PLAN STA. 243+00 TO STA. 253+50
8	WATERMAIN PLAN STA. 253+50 TO STA. 260+00
9	WATERMAIN PLAN STA. 260+00 TO EXISTING WATERMAIN
10	DETAILS

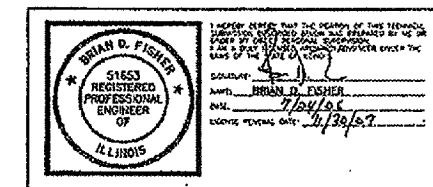
Location Map



Site Map



Professional Certifications



Date: 12-OCT-2004

Project No: 104779

106 E. Washington St. - Pontiac, Illinois 61764 - Phone: (815) 844-5571 / Fax: (815) 844-3147

File No: 24-7377

CITY OF PONTIAC - PONTIAC MUNICIPAL AIRPORT WATERMAIN IMPROVEMENTS

[Project No: 104779] [Sheet No: 104779-10] [Date: 12/10/04] [Time: 8:45:00 AM]

Legend

EXISTING	PROPOSED
⊙ _{1/2"} IRON ROD	⊙ _{1/2"} FUTURE SAN. MANHOLE
⊙ _{1/2"} IRON PIPE	— 12" — FUTURE SANITARY SEWER
× RAILROAD SPIKE	— 18" — FUTURE FORCEMAIN
× P.K. NAIL	— 18" — FUTURE STORM SEWER
⊙ RIGHT-OF-WAY MARKER	— 18" — WATERMAIN W/ SIZE
⊕ "X" IN CONCRETE	⊕ GATE VALVE
⊕ CORNER STONE	⊕ FIRE HYDRANT
⊕ BENCHMARK	⊕ EASEMENT
→ DOWN GUY	
⊕ DOWN GUY POLE	
⊕ STREET LIGHT	
⊕ POWER POLE	
⊕ UNDERGROUND ELECTRIC BOX	
⊕ ELECTRIC METER	
⊕ ELECTRIC MANHOLE	
— 12" — UNDERGROUND ELECTRIC LINE	
— 12" — OVERHEAD ELECTRIC LINE	
⊕ UNDERGROUND TELEPHONE BOX	
⊕ TELEPHONE MANHOLE	
— 12" — UNDERGROUND TELEPHONE LINE	
— 12" — OVERHEAD TELEPHONE LINE	
— 12" — FIBER OPTIC LINE	
⊕ GAS VALVE	
— 12" — GAS LINE	
⊕ FIRE HYDRANT	
⊕ WATER VALVE	
⊕ WATER METER	
— 12" — WATERMAIN LINE WITH SIZE	
— 12" — SLUDGE LINE WITH SIZE	
⊕ CURB INLET	
⊕ CATCH BASIN	
⊕ STORM MANHOLE	
— 10" — ST — STORM SEWER WITH SIZE	
⊕ SANITARY SEWER MANHOLE	
— 10" — SAN — SANITARY SEWER WITH SIZE	
— 12" — CORRUGATED METAL PIPE	
— 12" — CONCRETE CULVERT	
⊕ WELL WITH NUMBER	
⊕ TREE WITH DIAMETER	
⊕ EVERGREEN SAMPLING	
⊕ EVERGREEN TREE WITH DIAMETER	
— TREE LINE	
⊕ SIGN	
⊕ BORING W/ NUMBER	
— GULLIGATION LINE	
— FENCE	
— CONTOUR LINE	
— BUILDING LINE	
— R.O.M. LINE	

Benchmarks

CHEELED SQUARE ON S. CENTER OF CONC. SIGN BASE FOR PONTIAC IV ENTRANCE
 EL. 646.27 FIELD BOOK 2471/31

CHEELED SQUARE ON CENTERLINE OF E. END OF EAST-WEST CONC. CULVERT UNDER 1575E ON N. SIDE OF 2000V
 EL. 644.67 FIELD BOOK 2471/31

CHEELED SQUARE AT NW CORNER OF DOUBLE BOX CULVERT 600± W. OF AIRPORT BUILDING.
 EL. 647.03 FIELD BOOK 2471/34

CHEELED SQUARE AT SW CORNER OF CONC. TRANSFORMER PAD 50± W. OF SW COR. OF AIRPORT BUILDING.
 EL. 654.37 FIELD BOOK 2471/34

General Notes

1. THE STANDARD SPECIFICATIONS FOR WATER AND SEWER MAIN CONSTRUCTION IN ILLINOIS 8TH EDITION SHALL APPLY TO THIS WORK.
2. CONTRACTOR TO COMPLY WITH PROTECTION OF WATER MAINS IN ACCORDANCE WITH 35 IL. ADM CODE 653.110.
3. THE UTILITY COMPANIES HAVE BEEN NOTIFIED OF THE UPENDING PROJECT. EXISTING UNDERGROUND UTILITIES WERE FIELD LOCATED FOR THE PREPARATION OF THE PLANS, BUT ARE BASED ON UTILITY COMPANY FURNISHED INFORMATION AND ARE APPROXIMATE ONLY. THE CONTRACTOR SHALL HAVE THE RESPONSIBILITY BEFORE ANY CONSTRUCTION WORK HAS BEGUN, OF OBTAINING FROM ALL UTILITIES THE EXACT LOCATION OF ANY UNDERGROUND FACILITIES IN THE AREA OF CONSTRUCTION, WHETHER INDICATED ON THE PLANS OR NOT. ANY FACILITIES DISTURBED BY THE CONTRACTOR SHALL BE RESTORED BY HIM AT HIS OWN EXPENSE. THE CONTRACTOR SHALL COORDINATE WITH THE PROPER UTILITY THE RELOCATION OF ANY FACILITY DESIGNATED ON THE PLANS OR DEEMED NECESSARY TO BE BY THE ENGINEER IN ORDER TO COMPLETE CONSTRUCTION OF THE PROJECT.

SUMMARY OF QUANTITIES

ITEM NO.	DESCRIPTION	UNIT	TOTAL QUANTITY	AS BUILT QUANTITY
AR760630	WATER VALVE-6"	EA	6	
AR760631	WATER VALVE-12"	EA	6	
AR760600	FIRE HYDRANT	EA	6	
AR760602	2" DUCTILE IRON WATERMAIN	LF	5	
AR760606	6" DUCTILE IRON WATERMAIN	LF	160	
AR760508	8" DUCTILE IRON WATERMAIN	LF	480	
AR760512	12" DUCTILE IRON WATERMAIN	LF	6100	
AR760620	20" DUCTILE IRON WATERMAIN CASING	LF	41	
AR760610	WATER METER	EA	1	
AR501608	8" PCC PAVEMENT	SY	25	
AR701230	TRENCH BACKFILL	CY	65	
AR901210	SEEDING	AC	0.30	
AR760999	WELL ABANDONMENT	EA	2	

ENGINEERS
 ARCHITECTS
 SURVEYORS
 SCIENTISTS

Farnsworth GROUP

106 E. WASHINGTON STREET
 PONTIAC, ILLINOIS 61764
 (815) 844-6571 / (815) 844-0147 Fax
 www.f-w.com

REVISIONS

#	Date	Description
1	11/21/04	REVISED SITE OF WATERMAIN
2	02/20/06	REVISED PER SUBMITTAL
3	07/11/06	REVISED PER CITY COMMENTS
4	06/20/06	REVISED PER REV QUANTITY LIST

CITY OF PONTIAC

MUNICIPAL AIRPORT WATERMAIN IMPROVEMENTS

LIVINGSTON COUNTY, ILLINOIS

Date:	10-12-04
Design/Drawn:	DAB/GLB
Approved:	BDF
Book No.:	2471A2
Project No.:	104779

LEGEND, BENCHMARKS, GENERAL NOTES & SUMMARY OF QUANTITIES

LETTING ITEM # 1A

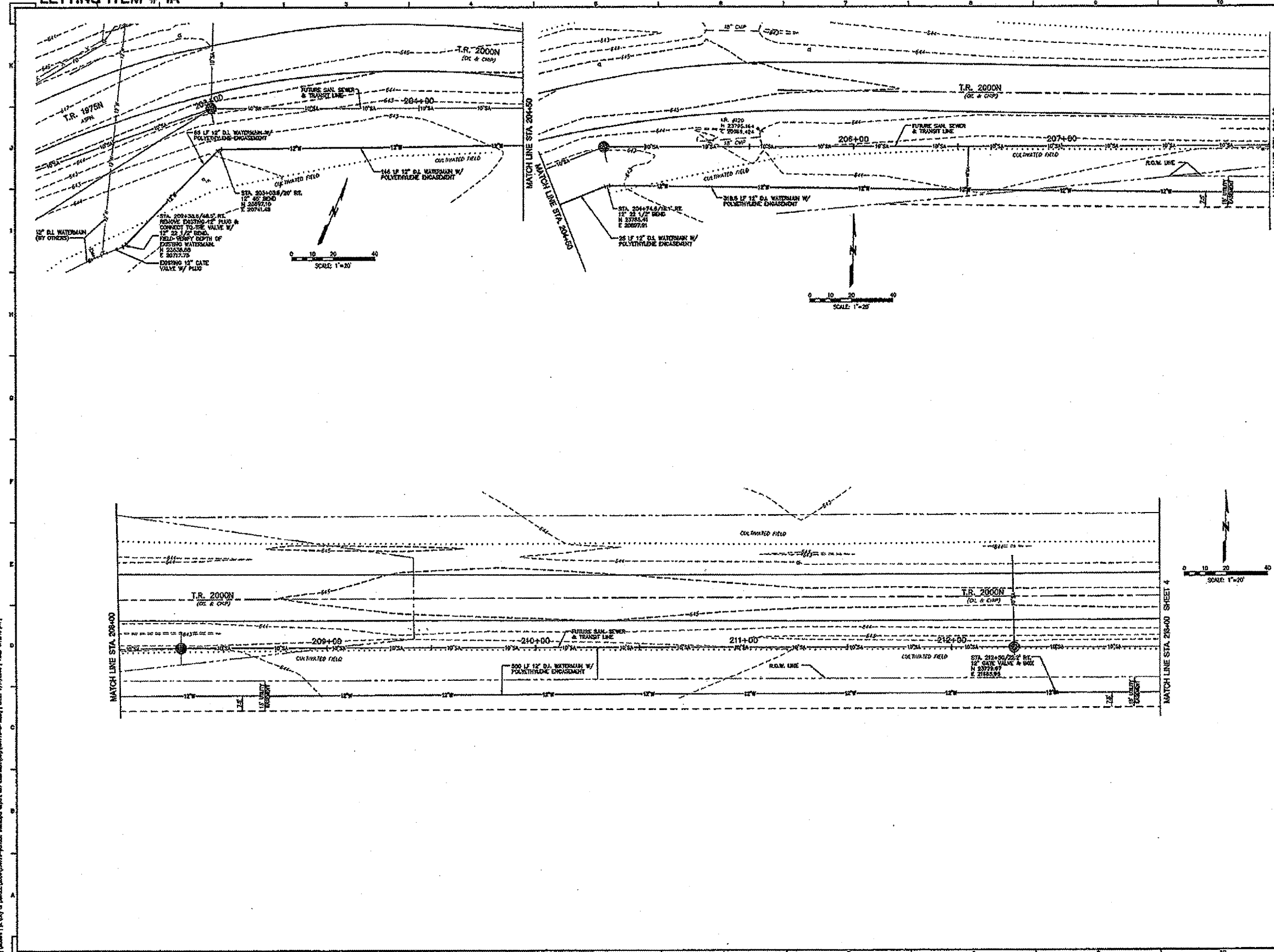
Letting # PO 015

ENGINEERS
ARCHITECTS
SURVEYORS
SCIENTISTS

Farnsworth GROUP

104 E. WASHINGTON STREET
PONTIAC, ILLINOIS 61764
(815) 844-6571 / (815) 844-8147 Fax
www.fw.com

1	Date	10-22-04
2	Drawn	DA8/GLS
3	Checked	BDF
4	Reviewed	247/V42
5	Approved	104778



PROJECT
CITY OF PONTIAC

MUNICIPAL AIRPORT WATERMAIN IMPROVEMENTS

LIVINGSTON COUNTY, ILLINOIS

Date:	10-22-04
Design/Drawn:	DA8/GLS
Approved:	BDF
Book No.:	247/V42
Project No.:	104778

SHEET TITLE
WATERMAIN PLAN EXISTING MAIN TO STA. 213+00

SHEET NUMBER
3

SHEET OF 10

File No.: 24-7877

[P:\projects\p015\p015\p015.dwg] DATE: 7/1/2004 TIME: 8:12:40 PM
 [P:\projects\p015\p015\p015.dwg] DATE: 7/1/2004 TIME: 8:12:40 PM

LETTING ITEM # 1A

Letting # PO 015

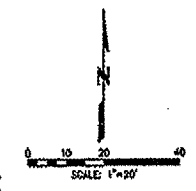
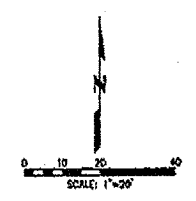
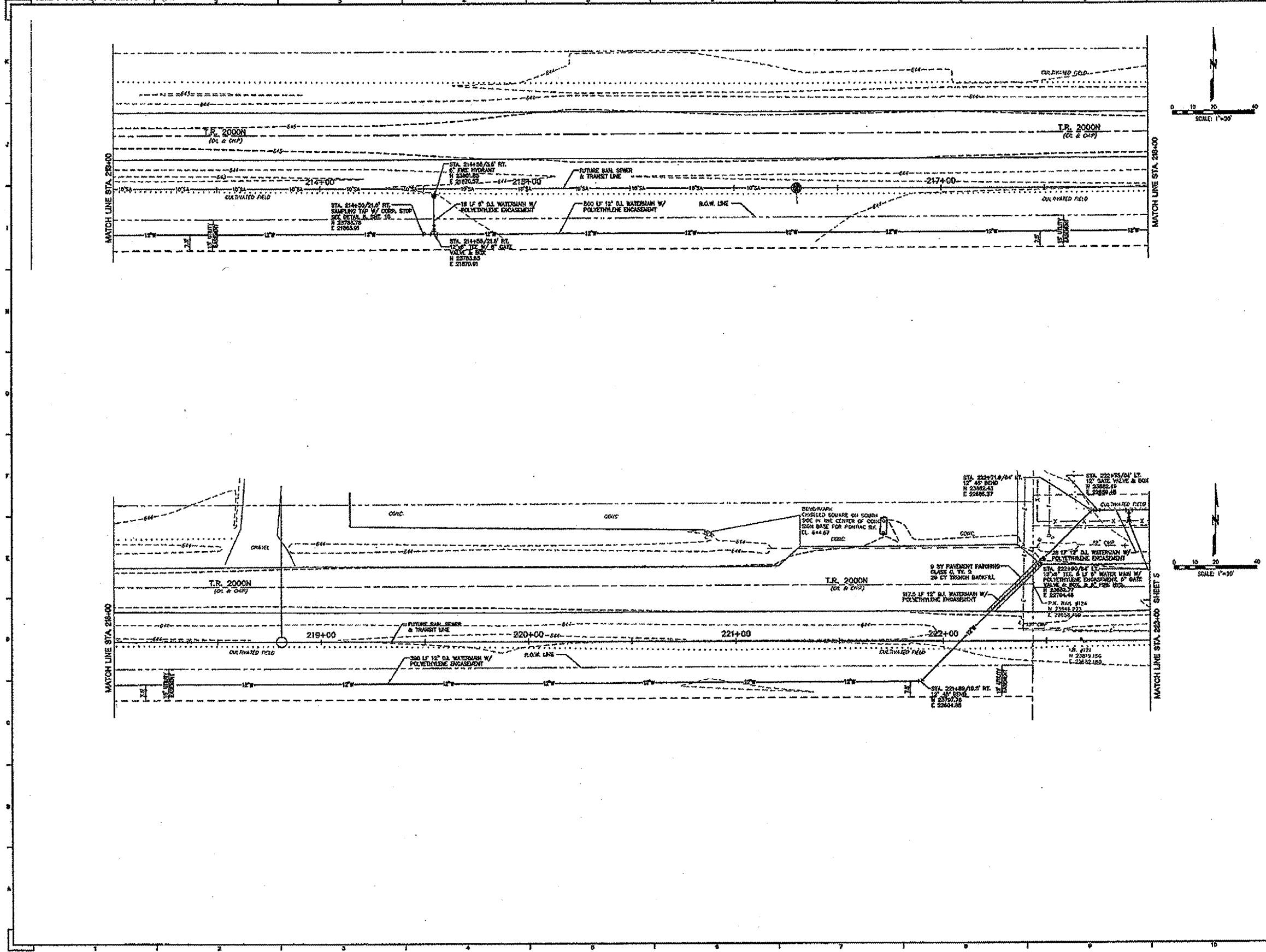
ENGINEERS
ARCHITECTS
SURVEYORS
SCIENTISTS

Farnsworth GROUP

106 E. WASHINGTON STREET
PONTIAC, ILLINOIS 61762
(815) 864-5571 / (815) 864-3147 Fax
www.fw.com

DATE

1	11/21/04	DESIGNED SIZE OF WATER MAIN
2	02/22/05	REVISED FOR SUBMITTAL
3	07/27/05	REVISED FOR COST COMMENTS



CITY OF PONTIAC

MUNICIPAL AIRPORT WATERMAIN IMPROVEMENTS

LIVINGSTON COUNTY, ILLINOIS

Date:	10-12-04
Design/Drawn:	DAB/GLB
Approved:	BDF
Book No.:	247U42
Project No.:	104778

**WATERMAIN PLAN
STA. 213+00 TO
STA. 223+00**

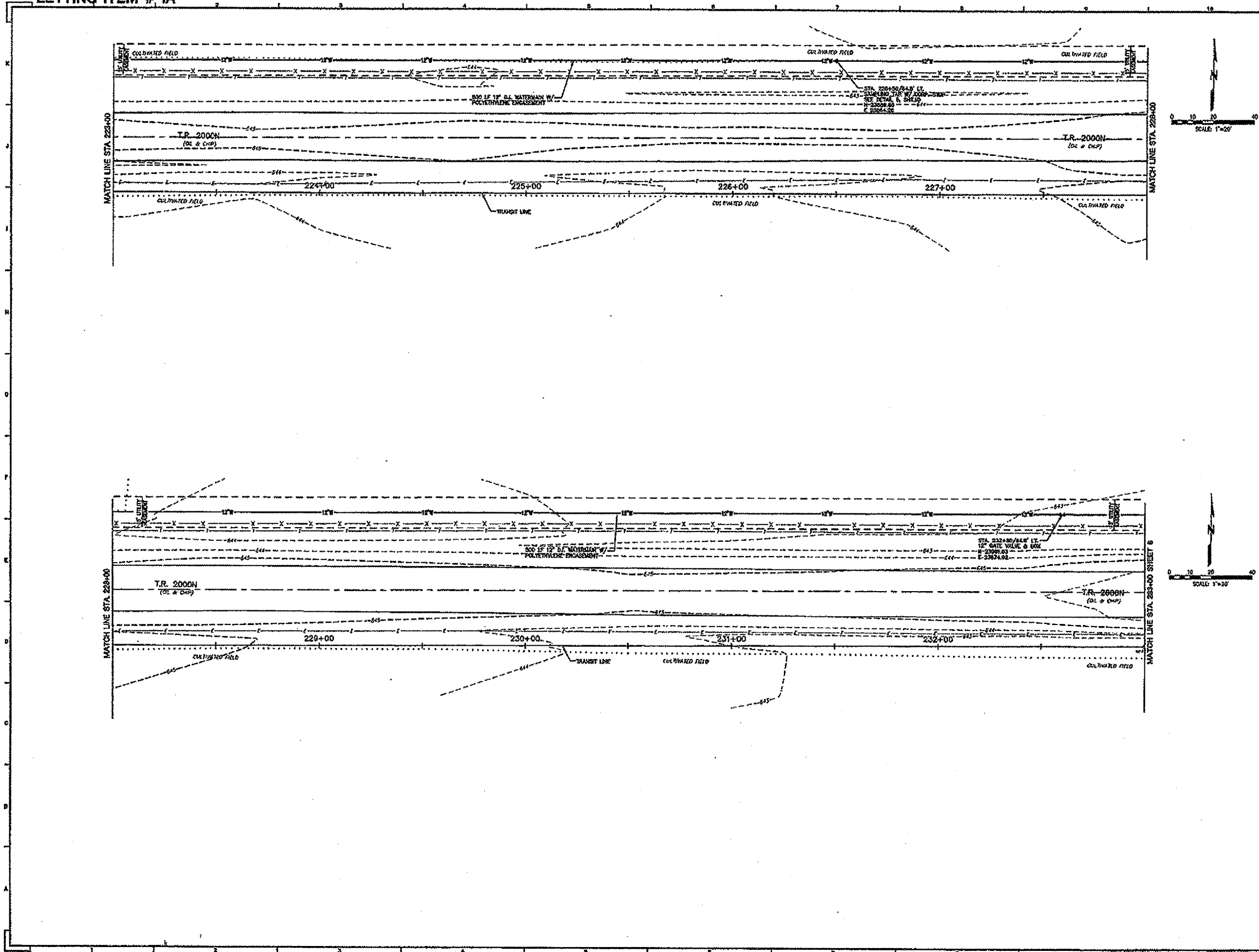
SHEET NUMBER

4
SHEET OF 10
File No.: 24-7377

I:\projects\104778\104778-01\104778-01.dwg (10/12/04) 10:00 AM

LETTING ITEM # 1A

Letting # PO 015



ENGINEERS
ARCHITECTS
SURVEYORS
SCIENTISTS

Farnsworth GROUP

105 E. WASHINGTON STREET
PONTIAC, ILLINOIS 61764
(815) 844-3371 / (815) 844-3147 Fax
www.f-w.com

NO.	Date	Description
1	11/21/01	REVISED PER CITY OF PONTIAC
2	05/20/02	REVISED FOR SUBMITTAL
3	10/21/04	REVISED PER CITY COMMENTS

CITY OF PONTIAC

MUNICIPAL AIRPORT WATERMAIN IMPROVEMENTS

LIVINGSTON COUNTY, ILLINOIS

Date:	10-12-04
Design/Drawn:	DAS/GLB
Approved:	BDF
Book No.:	2471/42
Project No.:	104778

WATERMAIN PLAN
STA 223+00 TO
STA 233+00

SHEET NAME:

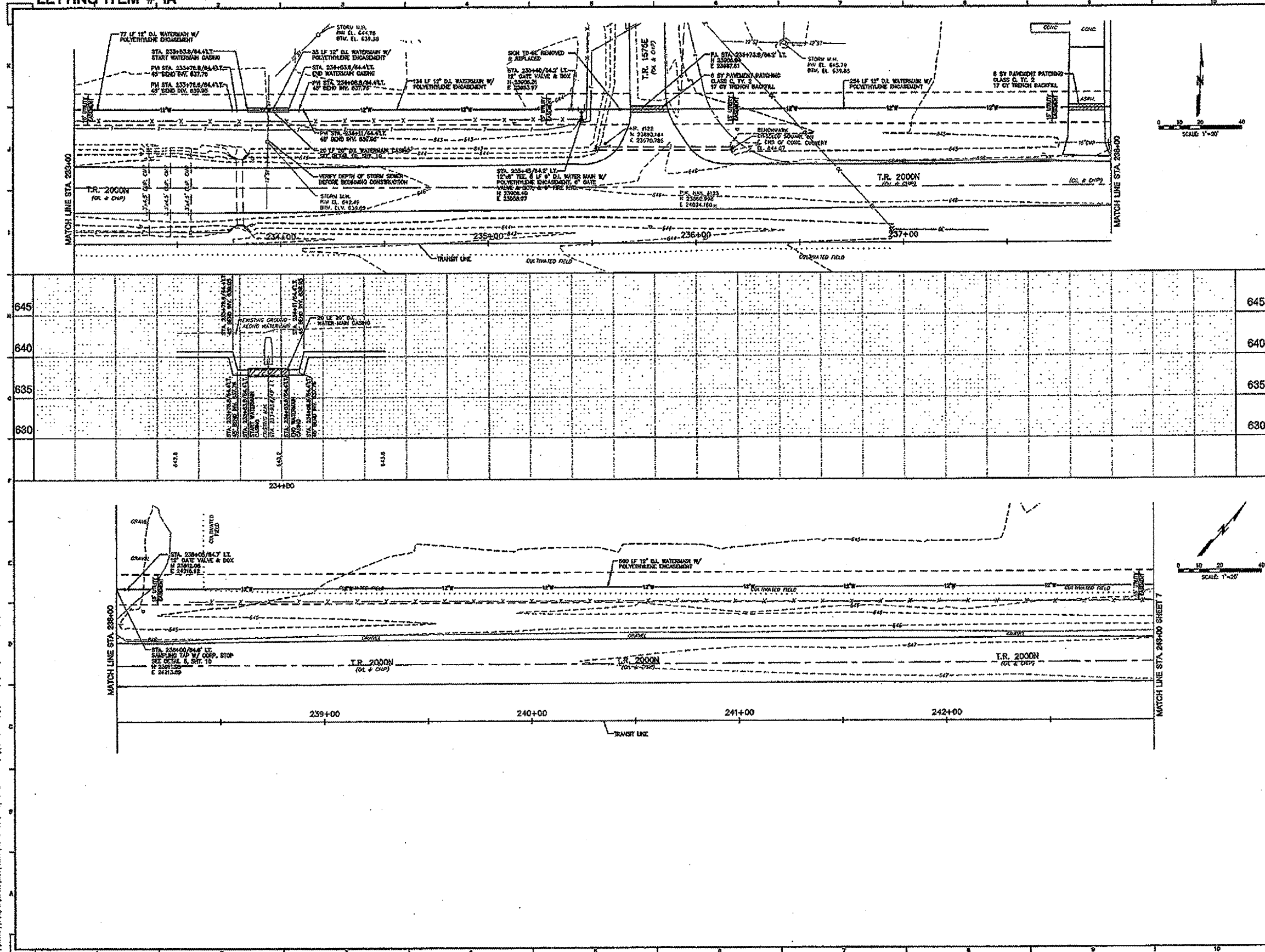
5

SHEET OF 10

File No.: 24-7377

LETTING ITEM # 1A

Letting # PO 015



ENGINEERS
ARCHITECTS
SURVEYORS
SCIENTISTS

Farnsworth GROUP

104 E. WASHINGTON STREET
PONTIAC, ILLINOIS 61764
(815) 844-6871 / (815) 844-3147 Fax
www.f-w.com

REVISIONS

No.	Date	Description
1	10/11/04	REVISED SIZE OF WATER MAIN
2	04/29/05	REVISED FOR SUBMITTAL
3	07/01/05	REVISED FOR XREF CHANGES

PROJECT
CITY OF PONTIAC

MUNICIPAL AIRPORT WATERMAIN IMPROVEMENTS

LIVINGSTON COUNTY, ILLINOIS

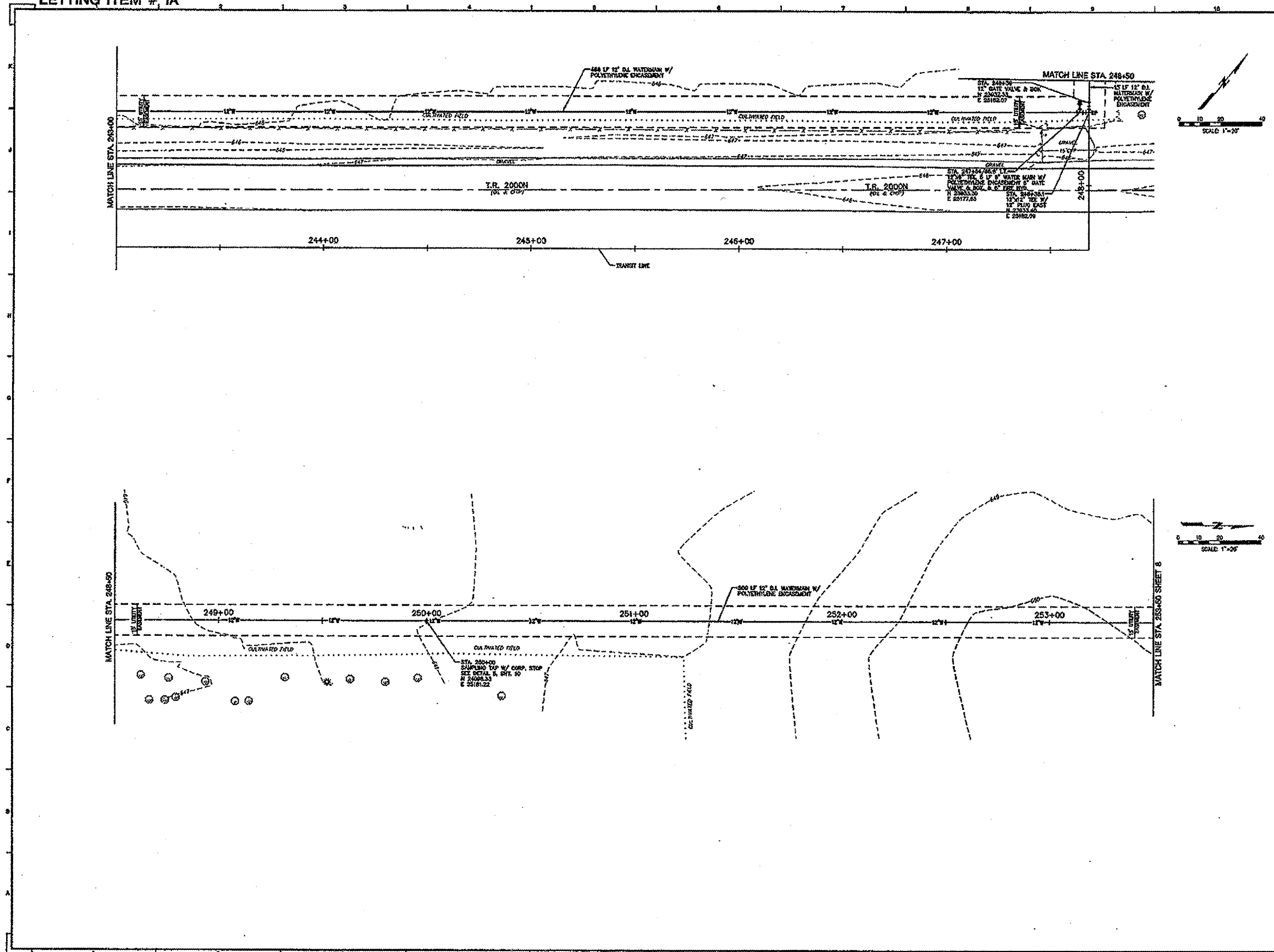
Date:	10-12-04
Design/Drawn:	DAS/GLB
Approved:	BDF
Book No.:	2471/42
Project No.:	104770

WATERMAIN PLAN & PROFILE STA. 233+00 TO STA. 243+00

SHEET NUMBER
6
SHEET OF 10
File No.: 24-7377

LETTING ITEM # 1A

Letting # PO 015



ENGINEERS
ARCHITECTS
SURVEYORS
SCIENTISTS

Farnsworth GROUP

105 E. WASHINGTON STREET
PONTIAC, ILLINOIS 61764
(815) 844-6571 / (815) 844-3147 Fax
www.fg.com

Date	Description
1/17/04	REVISED SITE OF 30 FEET WIDE
2/20/04	REVISED FOR SUBMITTAL
3/21/04	REVISED FOR COST CONSIDERATIONS

CITY OF PONTIAC

MUNICIPAL AIRPORT WATERMAIN IMPROVEMENTS

LIVINGSTON COUNTY, ILLINOIS

Date:	10-12-04
Design/Drawn:	DAB/GLB
Approved:	BDF
Book No.:	2471/42
Project No.:	10477B

**WATERMAIN PLAN
STA. 243+00 TO
STA. 253+50**

SHEET NUMBER
7
SHEET OF 10
File No.: 24-7377

LETTING ITEM # 1A

Letting # PO 015

ENGINEERS
ARCHITECTS
SURVEYORS
SCIENTISTS

**Farnsworth
GROUP**

106 E. WASHINGTON STREET
PONTIAC, ILLINOIS 61764
(815) 844-6571 / (815) 844-0147 Fax
www.fwg.com

NO.	DATE	DESCRIPTION
1.	11/11/04	REVISED SET OF WATER MAIN
2.	08/26/05	REVISED FOR SUBMITTAL
3.	07/11/06	REVISED FOR ERF COMMENTS

CITY OF PONTIAC
**MUNICIPAL AIRPORT
WATERMAIN
IMPROVEMENTS**

**LIVINGSTON COUNTY,
ILLINOIS**

Date: 10-12-04
Design/Drawn: DAB/GLS
Approved: BDF
Book No.: 247U/42
Project No.: 104779

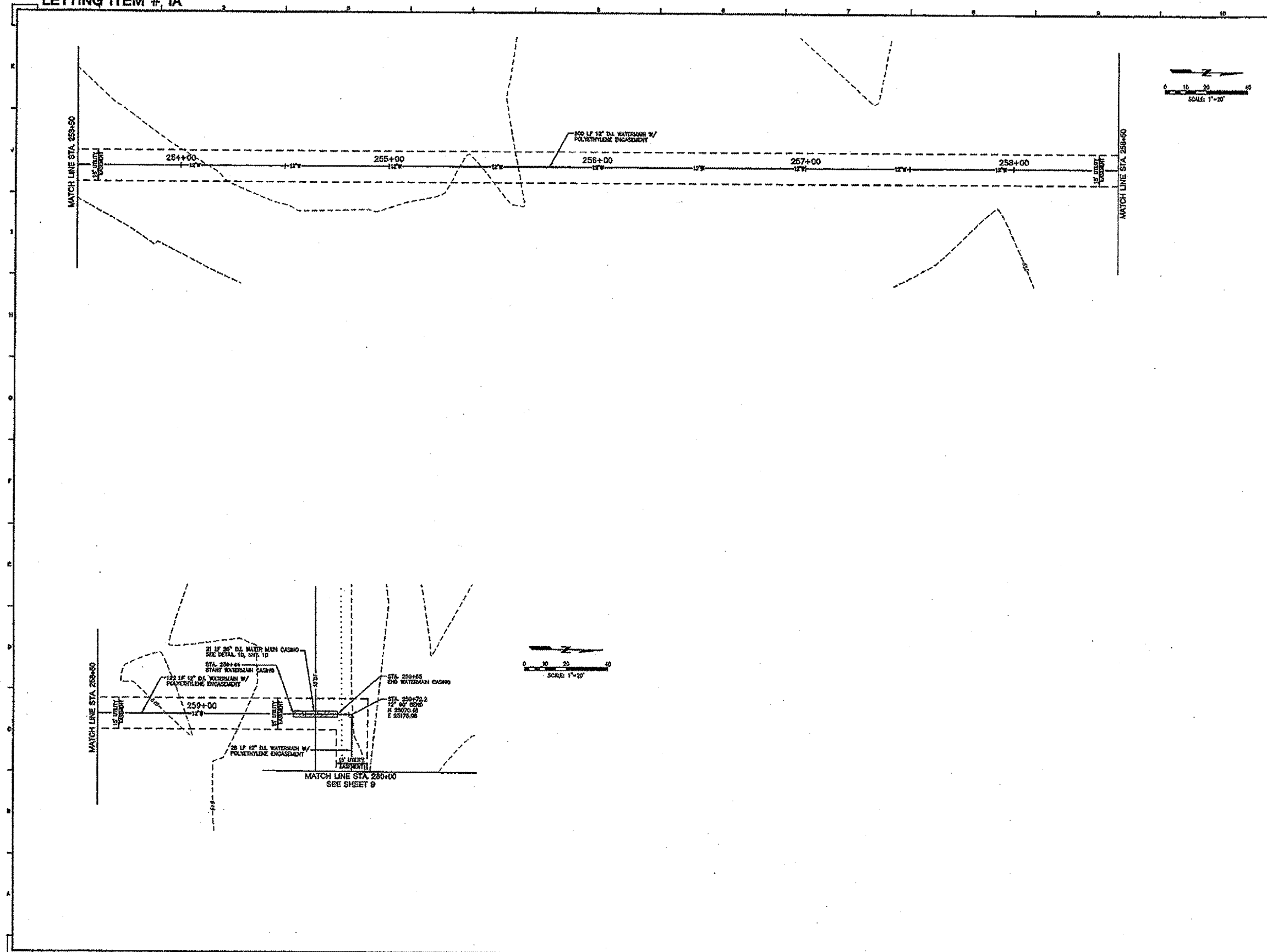
**WATERMAIN PLAN
STA. 253+50 TO
STA. 260+00**

SHEET NUMBER

8

SHEET OF 10

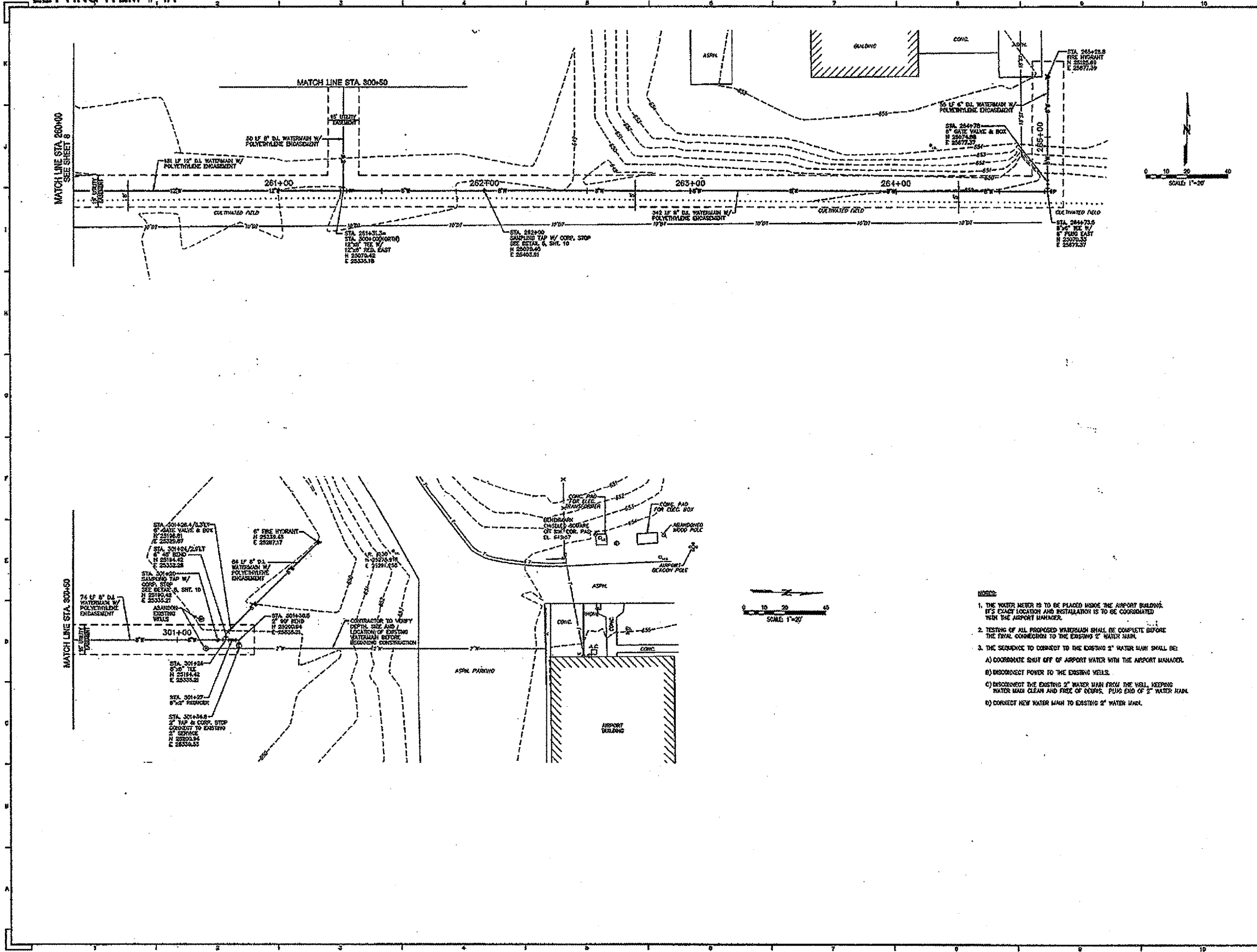
File No.: 24-7377



I:\projects\11\city of pontiac\2479-pontiac municipal airport air\watermain\2479-8.dwg | DATE: 7/11/2006 | TIME: 02:32:32 pm

LETTING ITEM # 1A

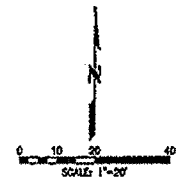
Letting # PO 015



ENGINEERS
ARCHITECTS
SURVEYORS
SCIENTISTS

Farnsworth GROUP

155 E WASHINGTON STREET
PONTIAC, ILLINOIS 61764
(815) 844-5571 / (815) 844-5147 Fax
www.fw.com



ISSUE

No.	Date	Description
1	11/21/01	REVISED SIZE OF WATER MAIN
2	05/26/02	REVISED FOR SUBMITTAL
3	02/24/03	REVISED FOR SOFT CONDITIONS
4	02/26/03	REVISED FOR SOFT SOILS AND LEAKS

CITY OF PONTIAC

MUNICIPAL AIRPORT WATERMAIN IMPROVEMENTS

LIVINGSTON COUNTY, ILLINOIS

Date:	10-22-04
Design/Drawn:	DAS/GLE
Approved:	BDI
Book No.:	2471/41
Project No.:	104771

**WATERMAIN PLAN
STA. 260+00 TO
EXISTING WATERMAIN**

SHEET NO. **9**
OF 10
FILE NO. 24-7371

- NOTES:**
1. THE WATER METER IS TO BE PLACED INSIDE THE AIRPORT BUILDING. ITS EXACT LOCATION AND INSTALLATION IS TO BE COORDINATED WITH THE AIRPORT MANAGER.
 2. TESTING OF ALL PROPOSED WATERMAIN SHALL BE COMPLETE BEFORE THE FINAL CONNECTION TO THE EXISTING 2" WATER MAIN.
 3. THE SEQUENCE TO CONNECT TO THE EXISTING 2" WATER MAIN SHALL BE:
 - A) COORDINATE SHUT OFF OF AIRPORT WATER WITH THE AIRPORT MANAGER.
 - B) DISCONNECT POWER TO THE EXISTING WELLS.
 - C) DISCONNECT THE EXISTING 2" WATER MAIN FROM THE WELL, KEEPING WATER MAIN CLEAN AND FREE OF DEBRIS, PLUS END OF 2" WATER MAIN.
 - D) CONNECT NEW WATER MAIN TO EXISTING 2" WATER MAIN.

