

STATE OF ILLINOIS  
DEPARTMENT OF TRANSPORTATION

| F.A.U. RTE. | SECTION    | COUNTY   | TOTAL SHEETS       | SHEET NO. |
|-------------|------------|----------|--------------------|-----------|
| 3565        | 2015-082-B | COOK     | 11                 | 1         |
|             |            | ILLINOIS | CONTRACT NO. 62B81 |           |

FOR INDEX OF SHEETS, SEE SHEET NO. 2

THE PROJECT IS LOCATED IN PALOS TOWNSHIP

**PROPOSED  
HIGHWAY PLANS**

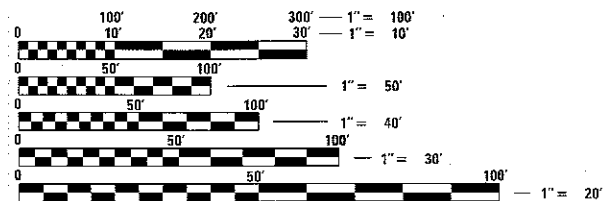
**FAU ROUTE 3565: IL ROUTE 171 (ARCHER AVE.)  
OVER DITCH WEST OF 95TH ST.  
SECTION: 2015-082-B  
CULVERT REPAIR  
COOK COUNTY**

**TRAFFIC DATA**  
2015 ADT (IL-171): 12,200  
2014 ADT (95TH ST.): 2,950  
2014 ADT (RAMP A): 225

**POSTED SPEED**  
(IL-171): 55 MPH  
(95TH ST.): 30 MPH

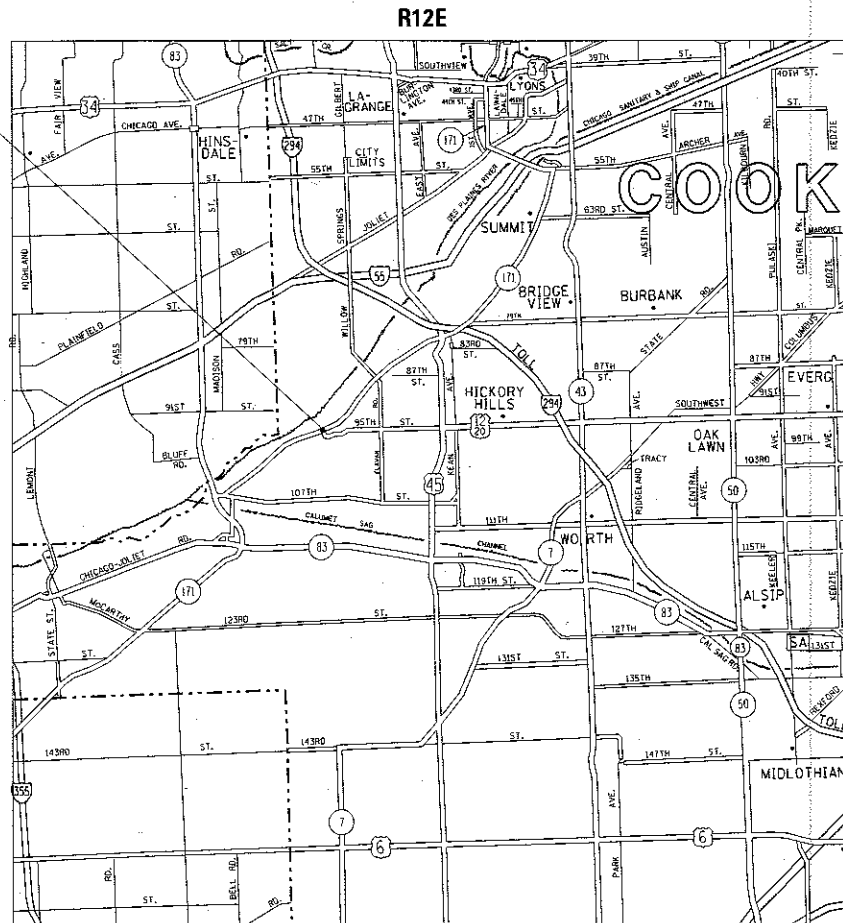
C-91-144-16

IMPROVEMENT LOCATION  
SN 016-1406



FULL SIZE PLANS HAVE BEEN PREPARED USING STANDARD ENGINEERING SCALES. REDUCED SIZED PLANS WILL NOT CONFORM TO STANDARD SCALES. IN MAKING MEASUREMENTS ON REDUCED PLANS, THE ABOVE SCALES MAY BE USED.

J.U.L.I.E.  
JOINT UTILITY LOCATION INFORMATION FOR EXCAVATION  
1-800-892-0123  
OR 811



LOCATION OF SECTION INDICATED THUS: -

PROJECT ENGINEER: J. ALAIN MIDY (847)-221-3056  
PROJECT MANAGER: ISSAM RAYYAN (847) 705-4178

PALOS TOWNSHIP  
GROSS LENGTH = 528 FT. = 0.1 MILE  
NET LENGTH = 200 FT. = 0.04 MILE

CONTRACT NO. 62B81

STATE OF ILLINOIS  
DEPARTMENT OF TRANSPORTATION

SUBMITTED July 13 2017

Anthony J. Dingley / MB REGIONAL ENGINEER

Aug 18 2017 MAUREN M. ADAMS PERKINS ENGINEER OF DESIGN AND ENVIRONMENT

Aug 18 2017 [Signature] 2 DIRECTOR OF PROGRAM DEVELOPMENT

PRINTED BY THE AUTHORITY  
OF THE STATE OF ILLINOIS



URBAN

URBAN

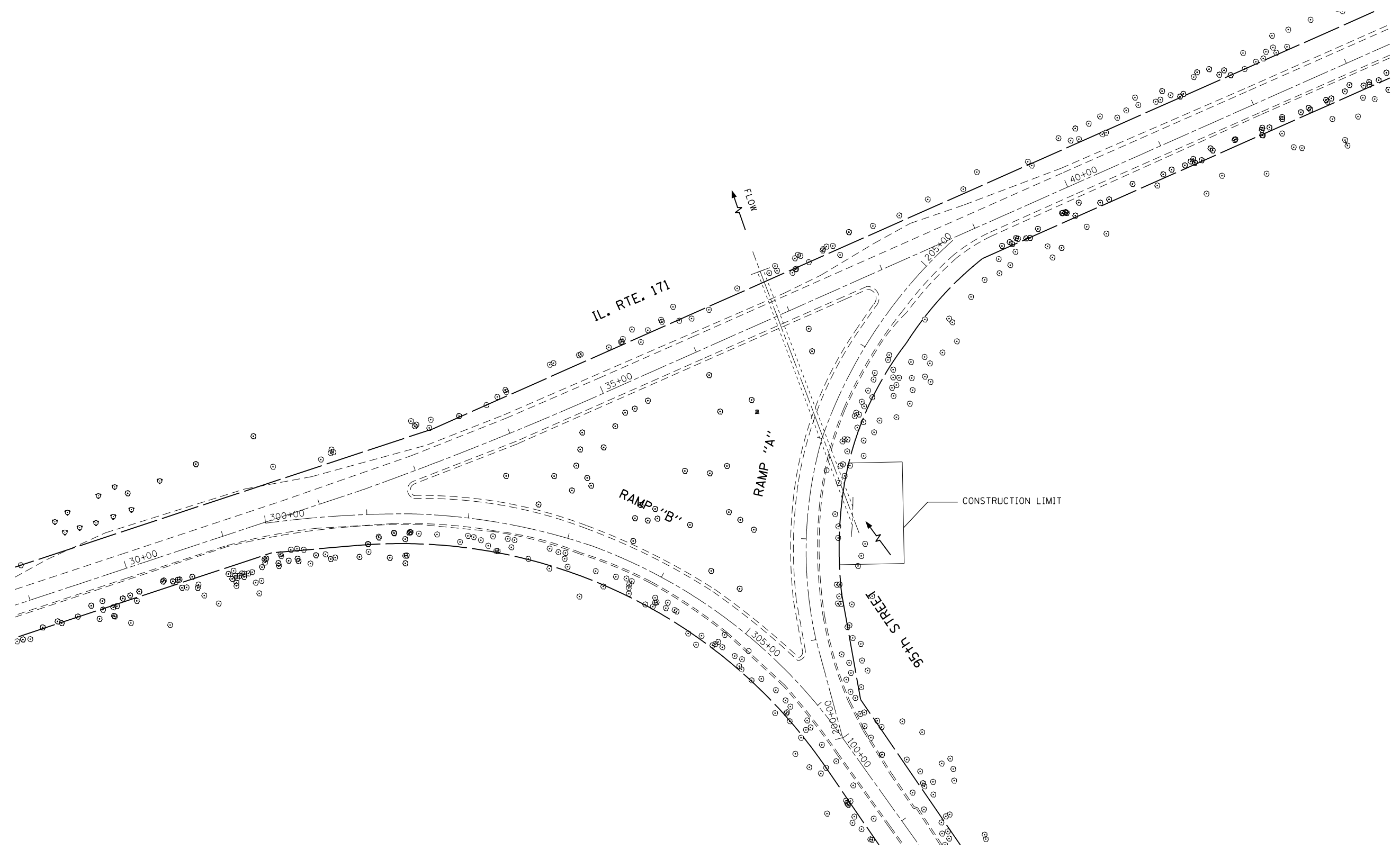
| SUMMARY OF QUANTITIES |                                       |       | CONSTRUCTION TYPE CODE |            |  |  |  |  |
|-----------------------|---------------------------------------|-------|------------------------|------------|--|--|--|--|
| CODE NO               | ITEM                                  | UNIT  | TOTAL QUANTITIES       | 100% STATE |  |  |  |  |
| 20100110              | TREE REMOVAL (6 TO 15 UNITS DIAMETER) | UNIT  | 96                     | 96         |  |  |  |  |
| 20100210              | TREE REMOVAL (OVER 15 UNITS DIAMETER) | UNIT  | 17                     | 17         |  |  |  |  |
| 20101100              | TREE TRUNK PROTECTION                 | EACH  | 3                      | 3          |  |  |  |  |
| 20200100              | EARTH EXCAVATION                      | CU YD | 123                    | 123        |  |  |  |  |
| 20400800              | FURNISHED EXCAVATION                  | CU YD | 77                     | 77         |  |  |  |  |
| 21101505              | TOPSOIL EXCAVATION AND PLACEMENT      | CU YD | 65                     | 65         |  |  |  |  |
| 21101625              | TOPSOIL FURNISH AND PLACE, 6"         | SQ YD | 285                    | 285        |  |  |  |  |
| 28000400              | PERIMETER EROSION BARRIER             | FOOT  | 217                    | 217        |  |  |  |  |
| 28100707              | STONE DUMPED RIPRAP, CLASS A4         | SQ YD | 99                     | 99         |  |  |  |  |
| 50300225              | CONCRETE STRUCTURES                   | CU YD | 7.2                    | 7.2        |  |  |  |  |
| 50500505              | STUD SHEAR CONNECTORS                 | EACH  | 36                     | 36         |  |  |  |  |
| 50800205              | REINFORCEMENT BARS, EPOXY COATED      | POUND | 270                    | 270        |  |  |  |  |
| 51201800              | FURNISHING STEEL PILES HP14X73        | FOOT  | 44                     | 44         |  |  |  |  |
| 52200100              | FURNISHING SOLDIER PILES (HP SECTION) | FOOT  | 120                    | 120        |  |  |  |  |
| 52200150              | DRIVING SOLDIER PILES                 | FOOT  | 84                     | 84         |  |  |  |  |
| 54390310              | INSERTION CULVERT LINER 60"           | FOOT  | 177                    | 177        |  |  |  |  |

| SUMMARY OF QUANTITIES |  |        | CONSTRUCTION TYPE CODE |            |  |  |  |  |
|-----------------------|--|--------|------------------------|------------|--|--|--|--|
| CODE NO               | ITEM   | UNIT   | TOTAL QUANTITIES       | 100% STATE |  |  |  |  |
| * 66900200            | NON-SPECIAL WASTE DISPOSAL                   | CU YD  | 123                    | 123        |  |  |  |  |
| * 66900450            | SPECIAL WASTE PLANS AND REPORTS              | LSUM   | 1                      | 1          |  |  |  |  |
| * 66900530            | SOIL DISPOSAL ANALYSIS                       | EACH   | 1                      | 1          |  |  |  |  |
| 67000400              | ENGINEER'S FIELD OFFICE, TYPE A              | CAL MO | 3                      | 3          |  |  |  |  |
| 67100100              | MOBILIZATION                                 | LSUM   | 1                      | 1          |  |  |  |  |
| X2501800              | SEEDING, CLASS 4 (MODIFIED)                  | ACRE   | 0.18                   | 0.18       |  |  |  |  |
| X7010216              | TRAFFIC CONTROL AND PROTECTION,<br>(SPECIAL) | LSUM   | 1                      | 1          |  |  |  |  |
| Z0013798              | CONSTRUCTION LAYOUT                          | LSUM   | 1                      | 1          |  |  |  |  |
| Z0030850              | TEMPORARY INFORMATION SIGNING                | SQ FT  | 25.7                   | 25.7       |  |  |  |  |

\* Specialty Item

|                            |                    |            |           |   |   |                    |                     |        |              |                       |
|----------------------------|--------------------|------------|-----------|---|---|--------------------|---------------------|--------|--------------|-----------------------|
| FILE NAME =                | USER NAME = dathor | DESIGNED - | REVISED - | <b>STATE OF ILLINOIS<br/>DEPARTMENT OF TRANSPORTATION</b> | <b>IL 171 (ARCHER AVE) OVER DITCH (SN 016-1406)<br/>SUMMARY OF QUANTITIES</b> | F.A.J. RTE.        | SECTION             | COUNTY | TOTAL SHEETS | SHEET NO.             |
| OFFICE DISTRICT PROJECTS   | DESIGN DISTRICT    | CHECKED -  | REVISED - |   |   | 3965               | 2015-082-B          | COOK   | 11           | 3                     |
| PLOT SCALE = 100,000' / 1" | DATE               | REVISED -  | REVISED - |   |   | CONTRACT NO. 62B81 |                     |        |              |                       |
| PLOT DATE = 7/14/2017      |                    | REVISED -  | REVISED - |   |   | SCALE:             | SHEET NO. OF SHEETS | STA.   | TO STA.      | FED. ROAD DIST. NO. 1 |

16



|   |                              |            |           |
|---|------------------------------|------------|-----------|
| FILE NAME =   | USER NAME = dahhr            | DESIGNED - | REVISED - |
| p:\IL\084EBIDINTEG\illinois.gov\PIWIDOT\Documents\IDOT Offices\District 1\Projects\D114416\Drawings\Design\0114416-shr-plan.dgn |                              | DRAWN -    | REVISED - |
| Default   | PLOT SCALE = 100.0000' / in. | CHECKED -  | REVISED - |
|   | PLOT DATE = 7/14/2017        | DATE -     | REVISED - |

**STATE OF ILLINOIS  
DEPARTMENT OF TRANSPORTATION**


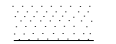


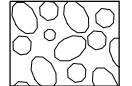
**IL 171 (ARCHER AVE) OVER DITCH (SN 016-1406)  
EXISTING PLAN**

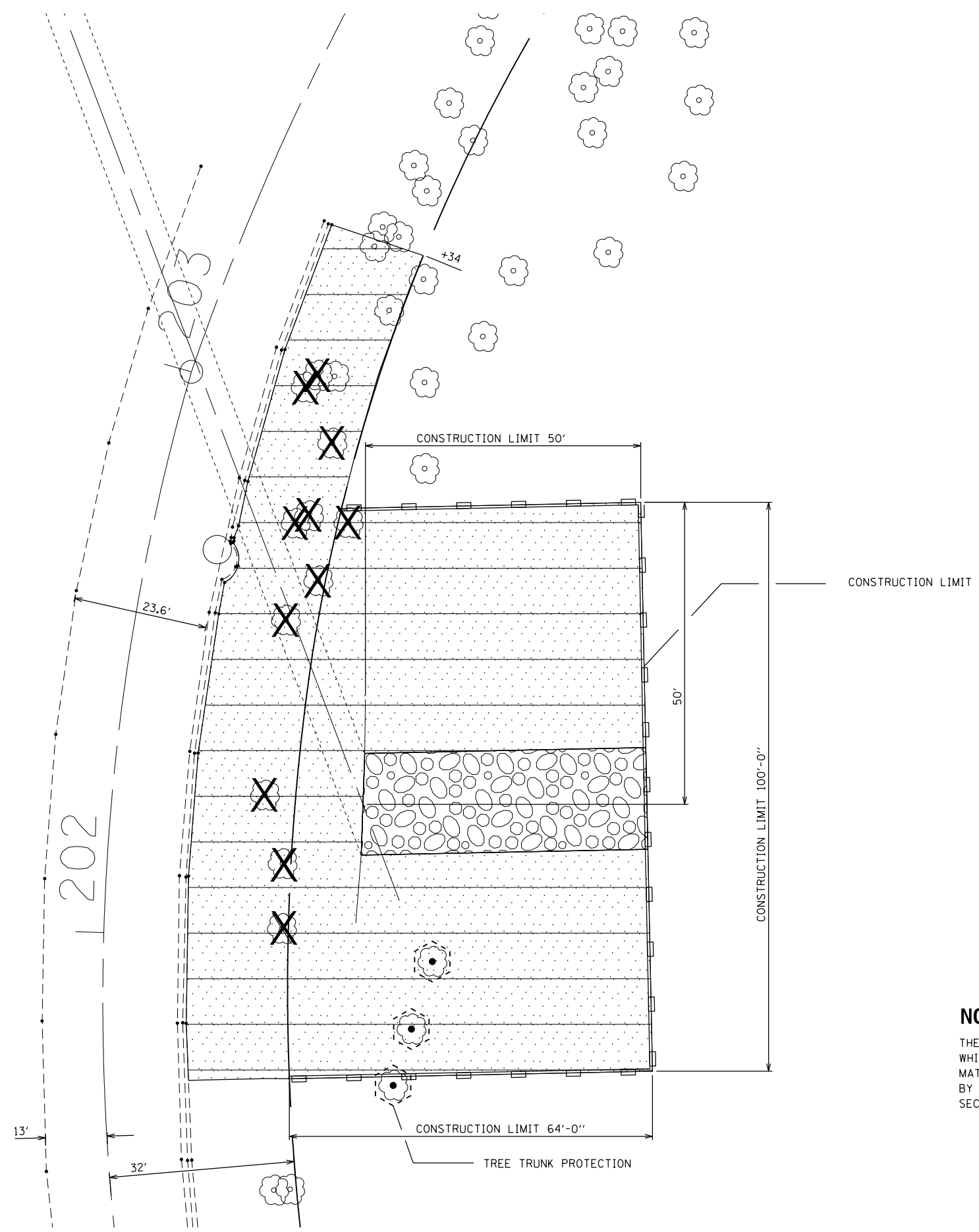
SCALE:      SHEET      OF      SHEETS      STA.      TO      STA.

| F.A.U. RTE.               | SECTION    | COUNTY | TOTAL SHEETS | SHEET NO. |
|---------------------------|------------|--------|--------------|-----------|
| 3565                      | 2015-082-B | COOK   | 11           | 4         |
| CONTRACT NO. 62B81        |            |        |              |           |
| ILLINOIS FED. AID PROJECT |            |        |              |           |

RAMP "A"

**LEGEND**

-  TREE REMOVAL
-  SEEDING CLASS 4 (MODIFIED)
-  PERIMETER EROSION BARRIER
-  TREE TRUNK PROTECTION
-  STONE DUMPED RIPRAP, CLASS A4



**NOTES:**

THE CONTRACTOR SHALL PROTECT ALL EXISTING PLANT MATERIAL FROM DAMAGE FOR WHICH THE CONTRACT DOES NOT PROVIDE REMOVAL. THE PROTECTION OF EXISTING PLANT MATERIAL AND THE REPAIR OR REPLACEMENT OF EXISTING PLANT MATERIAL DAMAGED BY THE CONTRACTOR SHALL BE DONE IN ACCORDANCE WITH THE REQUIREMENTS OF SECTION 201 OF THE STANDARDS SPECIFICATIONS UNLESS OTHERWISE NOTED.

|  |                               |            |           |   |  |                           |            |        |              |           |    |
|--|-------------------------------|------------|-----------|---|--|---------------------------|------------|--------|--------------|-----------|----|
| FILE NAME =  | USER NAME = dahhr             | DESIGNED - | REVISED - | <b>STATE OF ILLINOIS<br/>DEPARTMENT OF TRANSPORTATION</b> | <b>IL 171 (ARCHER AVE) OVER DITCH (SN 016-1406)<br/>ROADWAY PLAN</b> | F.A.U. RTÉ.               | SECTION    | COUNTY | TOTAL SHEETS | SHEET NO. |    |
| pw:\IL\084EBIDINTEG\illinois.gov\PWIDOT\Documents\DOT Offices\District 1\Projects\DI1416\Drawings\Design\DI1416-shr-plan.dgn |                               | CHECKED -  | REVISED - |   |  | 3565                      | 2015-082-B | COOK   | 11           | 5         |    |
| Default  |                               | DATE -     | REVISED - |   |  | <b>CONTRACT NO. 62B81</b> |            |        |              |           |    |
|  | PLOT SCALE = 100.0000' / 1" = |            |           |   |  | SCALE:                    | SHEET      | OF     | SHEETS       | STA.      | TO |

ROAD CLOSED (1) R11-2 (48" x 30")

DETOUR (2) M4-8-2412

NORTH ILLINOIS 171 (3) M1-1100.2-2424

SOUTH ILLINOIS 171 (4) M1-1100.2-2424

(5) M6-3-2115 (6L) M6-1L-2115 (6R) M6-1R-2115

(7R) M5-1R-2115 (7L) M5-1L-2115

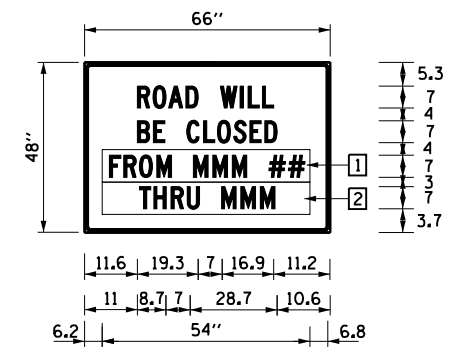
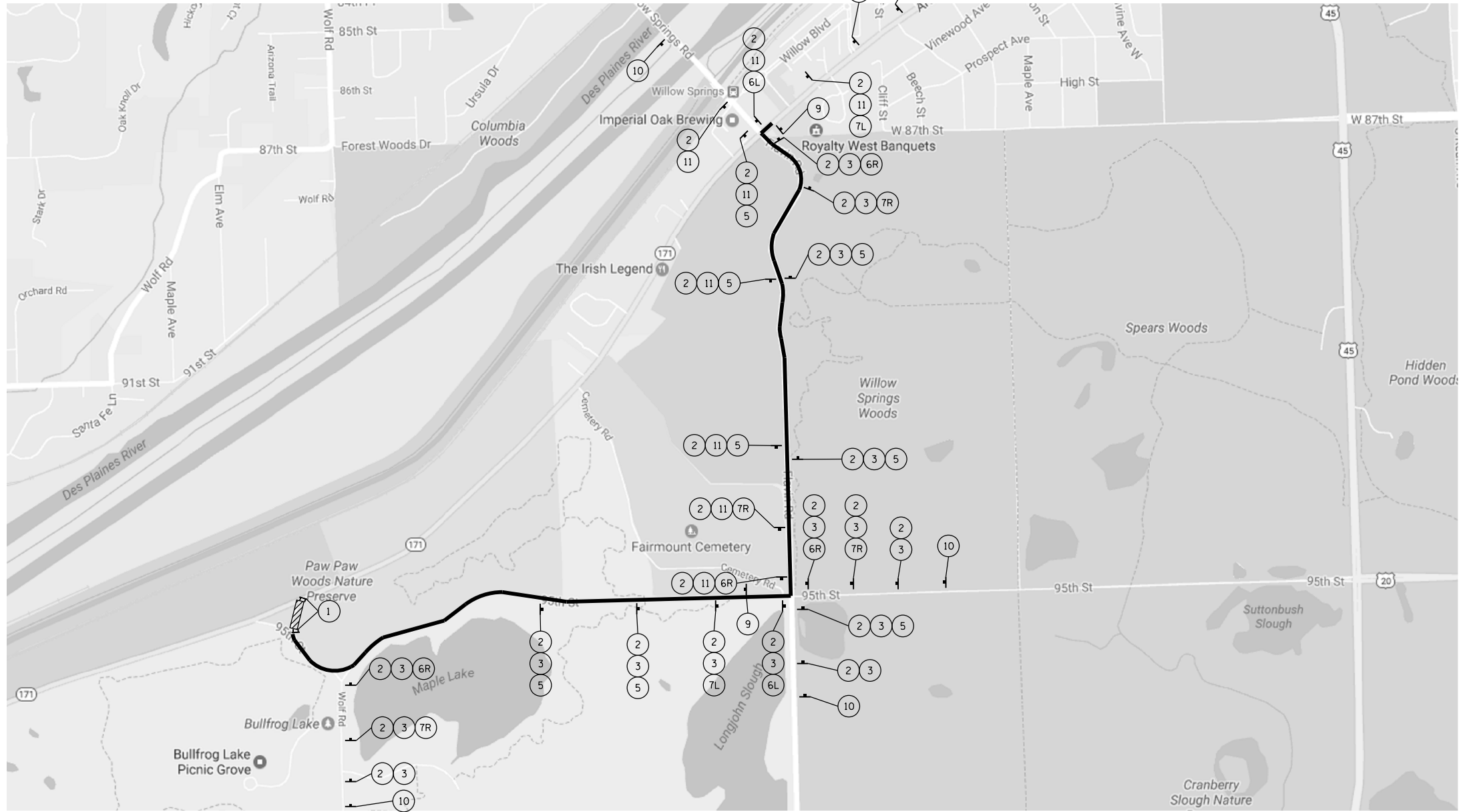
(8R) M4-10R (48"x18") (8L) M4-10L (48"x18")

(9) M4-8A (24" x 18")

(10) W20-2 (48" x 48")

DETOUR AHEAD

END DETOUR



ARTERIAL ROAD INFORMATION SIGN FOR ROADS TO BE FULLY CLOSED AND DETOURED  
6'R, 1.3" BORDER, BLACK ON ORANGE

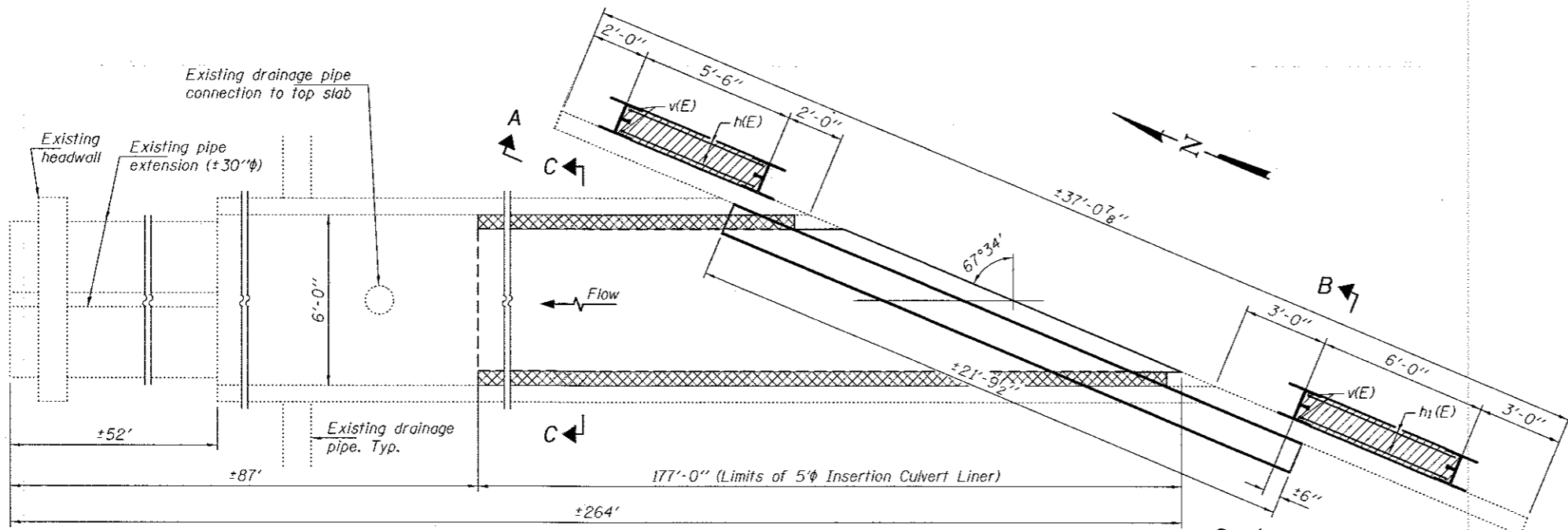
- ARTERIAL ROAD INFORMATION SIGN NOTES:
- SIGN SHALL BE PAID FOR AS TEMPORARY INFORMATION SIGNING. ONE SIGN ASSEMBLY EQUALS 27.3 SO FT.
  - OVERLAY PANELS SHALL BE "HIGHWAY C" FONT
  - OVERLAY PANEL 1 TO CONTAIN STARTING DATE OF FULL CLOSURE AND DETOUR IMPLEMENTATION
  - OVERLAY PANEL 2 TO CONTAIN ENDING MONTH OF FULL CLOSURE AND DETOUR. OMIT THE DATE ON PANEL; MONTH ONLY.
  - ERECT SIGN ASSEMBLY (POST-MOUNTED) WITH PANELS 1 AND 2 IN PLACE ON ROAD TO BE CLOSED IN EACH DIRECTION NEAR POINT OF CLOSURE OR WITHIN SECTION TO BE FULLY CLOSED TWO (2) WEEKS PRIOR TO START DATE OF FULL CLOSURE. REMOVE ASSEMBLY AFTER CLOSURE.

- NOTE:
- PLACEMENT AND SPACING OF SIGNS AND BARRICADES SHALL BE IN ACCORDANCE WITH TC-21 (DETOUR SIGNING FOR CLOSING STATE HIGHWAYS).
  - THE COST OF SUPPLYING, ERECTING AND MAINTAINING BARRICADES, WARNING LIGHTS AND SIGNS SHALL BE INCLUDED IN THE CONTRACT COST OF TRAFFIC CONTROL AND PROTECTION (SPECIAL).
  - TEMPORARY INFORMATION SIGNING SHALL BE PLACED AT EACH END OF IL 83/171 (ARCHER AVE.) FOR THE DURATION OF THE PROJECT.
  - THE CONTRACTOR SHALL DEVELOP AND MAINTAIN APPROPRIATE SIGNAL TIMINGS FOR THE FOLLOWING INTERSECTIONS, OR AS DIRECTED BY THE ENGINEER
    - A) FLAVIN RD. / 95TH ST.
    - B) FLAVIN RD. / IL 171
    - C) WOLF RD. / 95TH ST.
  - COVER ALL EXISTING TRAILBLAZERS WITHIN THE DETOUR ROUTE THAT CONFLICTS WITH THE DETOUR SIGNING.

LEGEND:

- DETOUR ROUTE
- CONSTRUCTION ZONE
- TYPE III BARRICADE
- AMBER FLASHING LIGHT

|  |                              |            |           |   |   |            |      |               |         |        |              |           |
|--|------------------------------|------------|-----------|---|---|------------|------|---------------|---------|--------|--------------|-----------|
| FILE NAME =  | USER NAME = dahhr            | DESIGNED - | REVISED - | <b>STATE OF ILLINOIS<br/>DEPARTMENT OF TRANSPORTATION</b> | <b>DETOUR PLAN<br/>IL 171 (ARCHER AVE) OVER DITCH (SN 016-1406)</b> |            |      | F.A.U. R.T.E. | SECTION | COUNTY | TOTAL SHEETS | SHEET NO. |
| pw\11084EBIDINTEG\illinois.gov\PIWIDOT\Documents\IDOT Offices\District 1\Projects\D11416\Drawings\Design\114416-shr-plan.dgn |                              | CHECKED -  | REVISED - |   | 3565  | 2015-082-B | COOK | 11            | 6       |        |              |           |
| Default  | PLOT SCALE = 100.0000' / in. | DATE -     | REVISED - |   | CONTRACT NO. 62B81  |            |      |               |         |        |              |           |
|  | PLOT DATE = 7/8/2017         |            |           |   | ILLINOIS FED. AID PROJECT   |            |      |               |         |        |              |           |



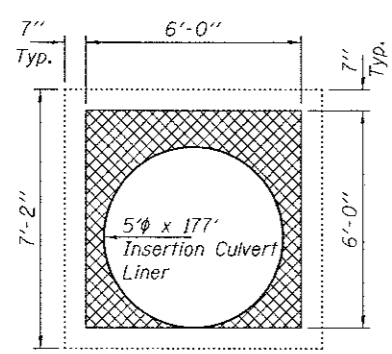
**PARTIAL PLAN**

**GENERAL NOTES**

Culvert liner material and placement to be in accordance with Article 543 of the Standard Specifications.

Plan dimensions and details relative to existing plans are subject to nominal construction variations. The Contractor shall field verify existing dimensions and details affecting new construction and make necessary approved adjustments prior to construction or ordering of materials. Such variations shall not be cause for additional compensation for a change in scope of the work, however, the Contractor will be paid for the quantity actually furnished at the unit price bid for the work.

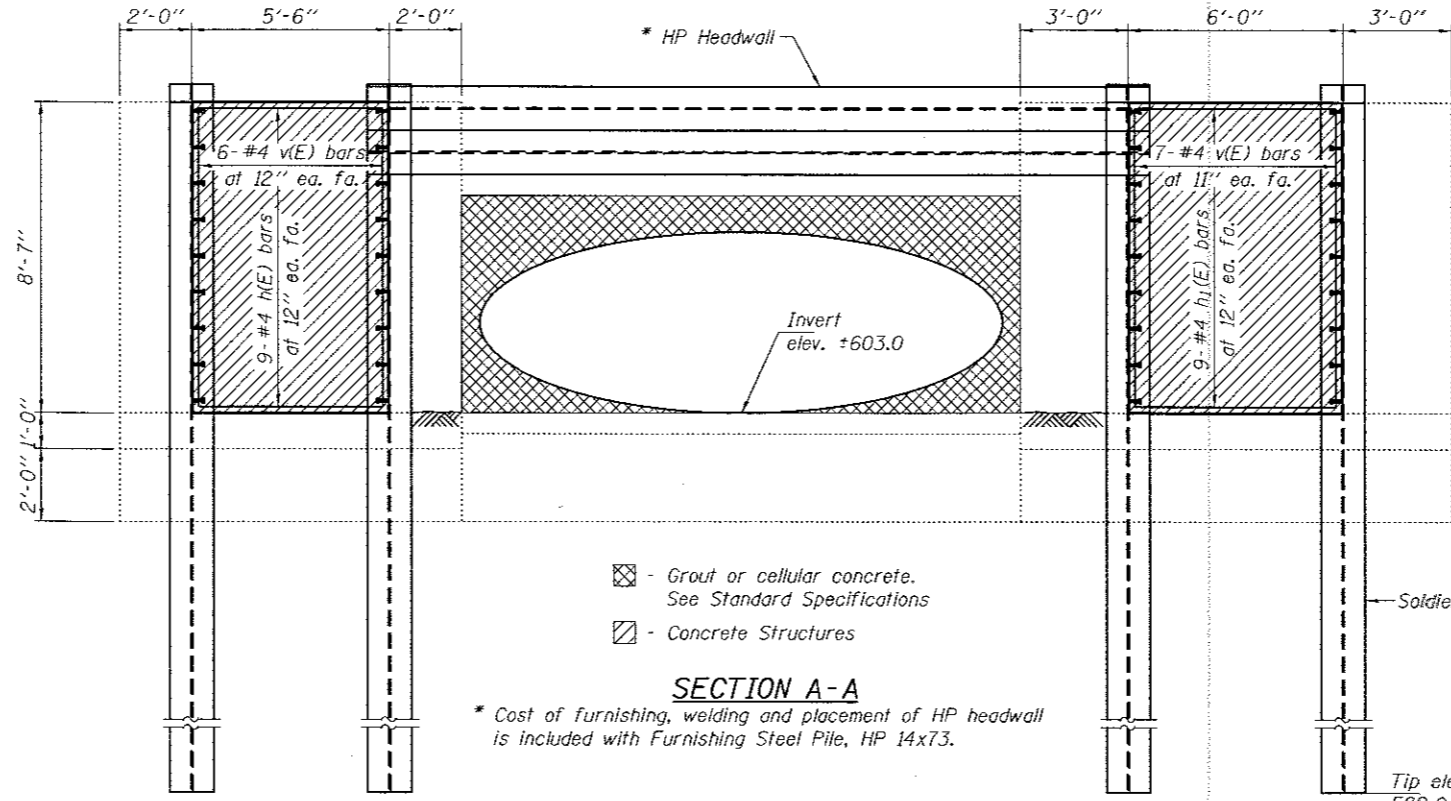
The Contractor is advised of the deteriorated condition of the existing culvert (particularly the last 25'). The Contractor must take reasonable precautions to avoid causing further damage during construction. See Special Provision "Preparation of the Work Zone".



**SECTION C-C**

**CONSTRUCTION SEQUENCE:**

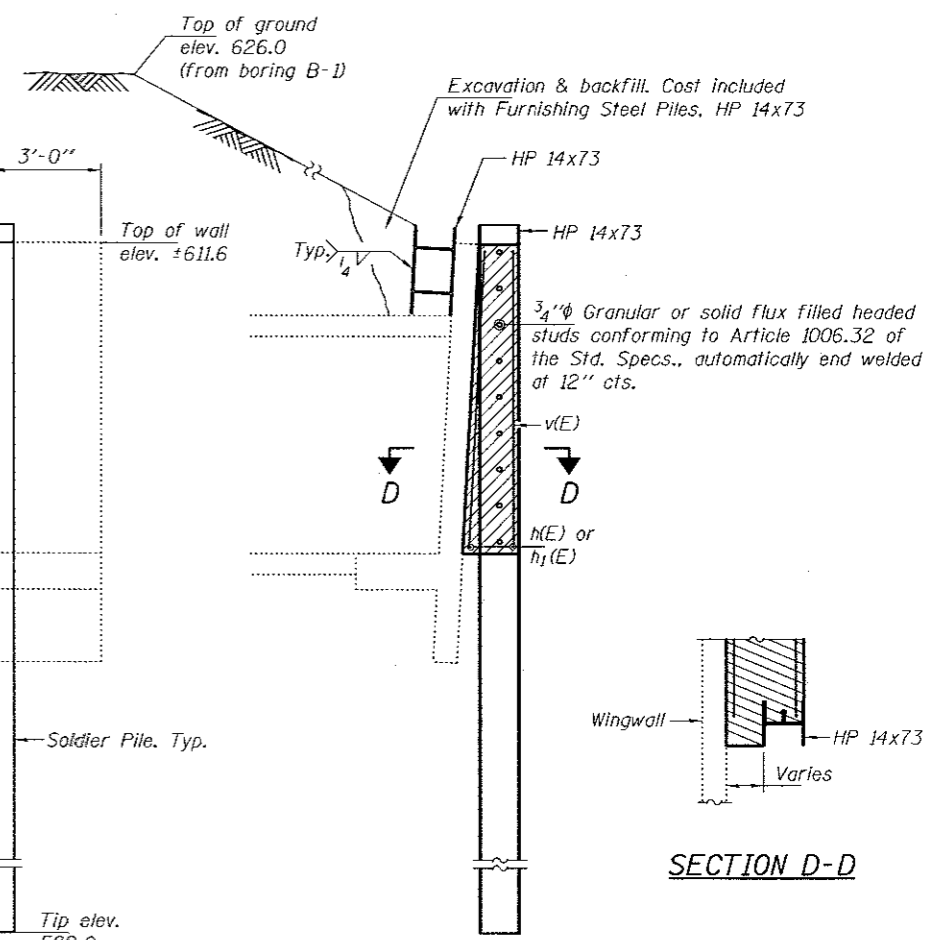
- 1.) Install culvert liner.
- 2.) Build bulkheads at both ends of liner.
- 3.) Fill area between liner & box culvert with grout or cellular concrete.
- 4.) Drive soldier piles.
- 5.) Place concrete between soldier piles and wingwalls.
- 6.) Install HP headwall.



**SECTION A-A**

- ☒ - Grout or cellular concrete. See Standard Specifications
- ☒ - Concrete Structures

\* Cost of furnishing, welding and placement of HP headwall is included with Furnishing Steel Pile, HP 14x73.



**SECTION B-B**

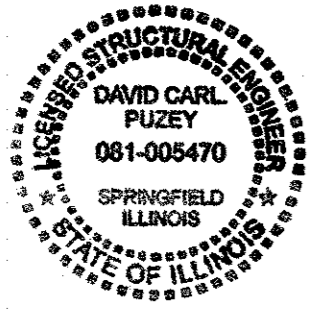
**SECTION D-D**

**REINFORCEMENT BILL OF MATERIAL**

| Bar                | No. | Size | Length | Shape |
|--------------------|-----|------|--------|-------|
| h(E)               | 18  | #4   | 5'-2"  |       |
| h <sub>1</sub> (E) | 18  | #4   | 5'-8"  |       |
| v(E)               | 26  | #4   | 8'-3"  |       |

**TOTAL BILL OF MATERIAL**

| ITEM                               | UNIT    | QUANTITY |
|------------------------------------|---------|----------|
| Concrete Structures                | Cu. Yd. | 7.2      |
| Stud Shear Connectors              | Each    | 36       |
| Furnishing Steel Piles, HP 14x73   | Foot    | 44       |
| Furnishing Soldier Piles, HP 14x73 | Foot    | 120      |
| Driving Soldier Piles, HP 14x73    | Foot    | 84       |
| Insertion Culvert Liner, 60"       | Foot    | 177      |
| Reinforcement Bars, Epoxy Coated   | Lbs.    | 270      |



EXPIRES 11-30-2018

LOADING: HS 20-44

| SEECO CONSULTANTS, INC. SOIL BORING LOG  |  |  |  |  |  |  |  |  |  | Page 1 of 2                    |  |
|--|--|--|--|--|--|--|--|--|--|--------------------------------|--|
| ROUTE FAU 3565 (IL Rte. 171) DESCRIPTION Roadway Improvements  |  |  |  |  |  |  |  |  |  | Date 5/18/17                   |  |
| SECTION LOCATION At IL Rte. 171 (Archer Ave.) & 95th St., IL   |  |  |  |  |  |  |  |  |  | Logged By DK                   |  |
| COUNTY Cook  |  |  |  |  |  |  |  |  |  | STRUCTURE NO. (Exist.) (Prop.) |  |
| Drilling Method AASHTO T 206-09  |  |  |  |  |  |  |  |  |  | Hammer Type Automatic Hammer   |  |
| Boring No. B-1   |  |  |  |  |  |  |  |  |  | Surf. Mat. El.                 |  |
| Station  |  |  |  |  |  |  |  |  |  | Groundwater Elev.              |  |
| Offset   |  |  |  |  |  |  |  |  |  | When Drilling 26 ft            |  |
| Ground Surface El. 626.0 +/- ft  |  |  |  |  |  |  |  |  |  | at Completion 13 ft            |  |
|  |  |  |  |  |  |  |  |  |  | After                          |  |
|  |  |  |  |  |  |  |  |  |  | Size                           |  |
|  |  |  |  |  |  |  |  |  |  | MSL (ft) (blows) (TSF) (%)     |  |
| 12" SAND AND GRAVEL BASE COURSE, Dark Brown  |  |  |  |  |  |  |  |  |  |                                |  |
| 625.02   |  |  |  |  |  |  |  |  |  | 16.0                           |  |
| FILL: CLAY, Brown, Trace Gray, Little Sand, Trace Gravel, Trace Roots, Stiff to Medium to Very Stiff to Stiff, Moist (A-6) |  |  |  |  |  |  |  |  |  | 4                              |  |
|  |  |  |  |  |  |  |  |  |  | 17.0                           |  |
|  |  |  |  |  |  |  |  |  |  | 18.0                           |  |
|  |  |  |  |  |  |  |  |  |  | 19.0                           |  |
| FILL: CLAY, Brown and Gray, Trace Sand and Gravel, Stiff to Medium, Moist (A-6)  |  |  |  |  |  |  |  |  |  | 3                              |  |
| (LL=30%; PL=19%; PI=11%)   |  |  |  |  |  |  |  |  |  | 4                              |  |
|  |  |  |  |  |  |  |  |  |  | 5                              |  |
|  |  |  |  |  |  |  |  |  |  | 6.0                            |  |
|  |  |  |  |  |  |  |  |  |  | 7.0                            |  |
|  |  |  |  |  |  |  |  |  |  | 8.0                            |  |
|  |  |  |  |  |  |  |  |  |  | 9.0                            |  |
| 4" CLAY TOPSOIL: Black, Trace Roots, Stiff, Wet (A-7.5)  |  |  |  |  |  |  |  |  |  | 5                              |  |
|  |  |  |  |  |  |  |  |  |  | 6                              |  |
| 4" CLAY, Dark Brown, Very Stiff, Wet (A-6)   |  |  |  |  |  |  |  |  |  | 12                             |  |
| GRAVEL, Brown, Medium Dense, Moist (A-1-b)   |  |  |  |  |  |  |  |  |  | 14                             |  |
|  |  |  |  |  |  |  |  |  |  | 15.0                           |  |
| (Saturated below 26 feet)  |  |  |  |  |  |  |  |  |  | 16.0                           |  |
| SANDY LOAM AND GRAVEL, Brown, Dense, Saturated (A-2.4)   |  |  |  |  |  |  |  |  |  | 17                             |  |
| (Combined Analysis)  |  |  |  |  |  |  |  |  |  | 20                             |  |
|  |  |  |  |  |  |  |  |  |  | 21.0                           |  |
|  |  |  |  |  |  |  |  |  |  | 22.0                           |  |
|  |  |  |  |  |  |  |  |  |  | 23.0                           |  |
|  |  |  |  |  |  |  |  |  |  | 24.0                           |  |
| SILTY LOAM, Brown, Very Dense, Saturated (A-4)   |  |  |  |  |  |  |  |  |  | 17                             |  |
| (Combined Analysis)  |  |  |  |  |  |  |  |  |  | 21                             |  |
|  |  |  |  |  |  |  |  |  |  | 22.0                           |  |
|  |  |  |  |  |  |  |  |  |  | 23.0                           |  |
|  |  |  |  |  |  |  |  |  |  | 24.0                           |  |
|  |  |  |  |  |  |  |  |  |  | 25.0                           |  |
|  |  |  |  |  |  |  |  |  |  | 26.0                           |  |
|  |  |  |  |  |  |  |  |  |  | 27.0                           |  |
|  |  |  |  |  |  |  |  |  |  | 28.0                           |  |
|  |  |  |  |  |  |  |  |  |  | 29.0                           |  |
|  |  |  |  |  |  |  |  |  |  | 30.0                           |  |

N=Standard Penetration Test-Blows per six inches to drive 2" O.D. (QU)B=Bulge S=Shear P=Penetrometer Test  
 Split Spoon Sampler 24" with 140lb hammer falling 30"  
 4.25" Diameter Hollow Stem Augers used between Split Spoon Sample intervals unless noted otherwise.  
 DRILL RIG: D-50

SEECO Job No. 10612G-17

| SEECO CONSULTANTS, INC. SOIL BORING LOG                                 |  |  |  |  |  |  |  |  |  | Page 2 of 2                    |  |
|---|--|--|--|--|--|--|--|--|--|--------------------------------|--|
| ROUTE FAU 3565 (IL Rte. 171) DESCRIPTION Roadway Improvements           |  |  |  |  |  |  |  |  |  | Date 5/18/17                   |  |
| SECTION LOCATION At IL Rte. 171 (Archer Ave.) & 95th St., IL            |  |  |  |  |  |  |  |  |  | Logged By DK                   |  |
| COUNTY Cook   |  |  |  |  |  |  |  |  |  | STRUCTURE NO. (Exist.) (Prop.) |  |
| Drilling Method AASHTO T 206-09   |  |  |  |  |  |  |  |  |  | Hammer Type Automatic Hammer   |  |
| Boring No. B-1  |  |  |  |  |  |  |  |  |  | Surf. Mat. El.                 |  |
| Station   |  |  |  |  |  |  |  |  |  | Groundwater Elev.              |  |
| Offset  |  |  |  |  |  |  |  |  |  | When Drilling 26 ft            |  |
| Ground Surface El. 626.0 +/- ft   |  |  |  |  |  |  |  |  |  | at Completion 13 ft            |  |
|   |  |  |  |  |  |  |  |  |  | After                          |  |
|   |  |  |  |  |  |  |  |  |  | Size                           |  |
|   |  |  |  |  |  |  |  |  |  | MSL (ft) (blows) (TSF) (%)     |  |
|   |  |  |  |  |  |  |  |  |  | 31.0                           |  |
|   |  |  |  |  |  |  |  |  |  | 32.0                           |  |
|   |  |  |  |  |  |  |  |  |  | 33.0                           |  |
| 592.52  |  |  |  |  |  |  |  |  |  | 34.0                           |  |
| CLAY, Gray, Some Brown, Trace Gravel, Very Stiff, Moist (A-6) 592.72    |  |  |  |  |  |  |  |  |  | 20                             |  |
| CLAYEY SILTY GRAVEL, Brown, Dense to Extremely Dense, Saturated (A-1-b) |  |  |  |  |  |  |  |  |  | 3.50                           |  |
|   |  |  |  |  |  |  |  |  |  | 19                             |  |
|   |  |  |  |  |  |  |  |  |  | 20                             |  |
|   |  |  |  |  |  |  |  |  |  | 21                             |  |
|   |  |  |  |  |  |  |  |  |  | 22                             |  |
|   |  |  |  |  |  |  |  |  |  | 23                             |  |
|   |  |  |  |  |  |  |  |  |  | 24                             |  |
|   |  |  |  |  |  |  |  |  |  | 25                             |  |
|   |  |  |  |  |  |  |  |  |  | 26                             |  |
|   |  |  |  |  |  |  |  |  |  | 27                             |  |
|   |  |  |  |  |  |  |  |  |  | 28                             |  |
|   |  |  |  |  |  |  |  |  |  | 29                             |  |
|   |  |  |  |  |  |  |  |  |  | 30                             |  |
|   |  |  |  |  |  |  |  |  |  | 31                             |  |
|   |  |  |  |  |  |  |  |  |  | 32                             |  |
|   |  |  |  |  |  |  |  |  |  | 33                             |  |
|   |  |  |  |  |  |  |  |  |  | 34                             |  |
|   |  |  |  |  |  |  |  |  |  | 35                             |  |
|   |  |  |  |  |  |  |  |  |  | 36                             |  |
|   |  |  |  |  |  |  |  |  |  | 37                             |  |
|   |  |  |  |  |  |  |  |  |  | 38                             |  |
|   |  |  |  |  |  |  |  |  |  | 39                             |  |
|   |  |  |  |  |  |  |  |  |  | 40                             |  |
|   |  |  |  |  |  |  |  |  |  | 41                             |  |
|   |  |  |  |  |  |  |  |  |  | 42                             |  |
|   |  |  |  |  |  |  |  |  |  | 43                             |  |
|   |  |  |  |  |  |  |  |  |  | 44                             |  |
|   |  |  |  |  |  |  |  |  |  | 45                             |  |
|   |  |  |  |  |  |  |  |  |  | 46                             |  |
|   |  |  |  |  |  |  |  |  |  | 47                             |  |
|   |  |  |  |  |  |  |  |  |  | 48                             |  |
|   |  |  |  |  |  |  |  |  |  | 49                             |  |
|   |  |  |  |  |  |  |  |  |  | 50                             |  |
|   |  |  |  |  |  |  |  |  |  | 51                             |  |
|   |  |  |  |  |  |  |  |  |  | 52                             |  |
|   |  |  |  |  |  |  |  |  |  | 53                             |  |
|   |  |  |  |  |  |  |  |  |  | 54                             |  |
|   |  |  |  |  |  |  |  |  |  | 55                             |  |
|   |  |  |  |  |  |  |  |  |  | 56                             |  |
|   |  |  |  |  |  |  |  |  |  | 57                             |  |
|   |  |  |  |  |  |  |  |  |  | 58                             |  |
|   |  |  |  |  |  |  |  |  |  | 59                             |  |
|   |  |  |  |  |  |  |  |  |  | 60                             |  |

N=Standard Penetration Test-Blows per six inches to drive 2" O.D. (QU)B=Bulge S=Shear P=Penetrometer Test  
 Split Spoon Sampler 24" with 140lb hammer falling 30"  
 4.25" Diameter Hollow Stem Augers used between Split Spoon Sample intervals unless noted otherwise.  
 DRILL RIG: D-50

SEECO Job No. 10612G-17

|                 |                                    |   |                        |                           |                    |                    |                 |             |
|-----------------|------------------------------------|---|------------------------|---------------------------|--------------------|--------------------|-----------------|-------------|
| DESIGNED VHV    | DATE - AUGUST 9, 2017              | STATE OF ILLINOIS<br>DEPARTMENT OF TRANSPORTATION | BORINGS<br>SN 016-1406 | F.A.U. RTE. 3565          | SECTION 2015-082-B | COUNTY COOK        | TOTAL SHEETS 11 | SHEET NO. 8 |
| CHECKED DAB     | REVISOR                            |   |                        | SHEET NO. 2 OF 2 SHEETS   |                    | CONTRACT NO. 62B81 |                 |             |
| DRAWN baliva    | ENGINEER OF BRIDGES AND STRUCTURES |   |                        | ILLINOIS FED. AID PROJECT |                    |                    |                 |             |
| CHECKED VHV DAB | PASSED                             |   |                        |                           |                    |                    |                 |             |



**ROUTE MARKERS**

FOR U.S. ROUTES  
MI-40-2424

FOR ILLINOIS ROUTES  
MI-50-2424

R,R, UNMARKED ROUTES  
SPECIAL 24" x 18" VARIABLE  
4" BLACK LETTERS ON WHITE  
REFLECTIVE BACKGROUND

**ARROWS SIGNS**

M5-1L-2115

M5-1R-2115

M6-1-2115

M6-1-2115

M6-3-2115

**CARDINAL DIRECTION & DETOUR SIGNS**

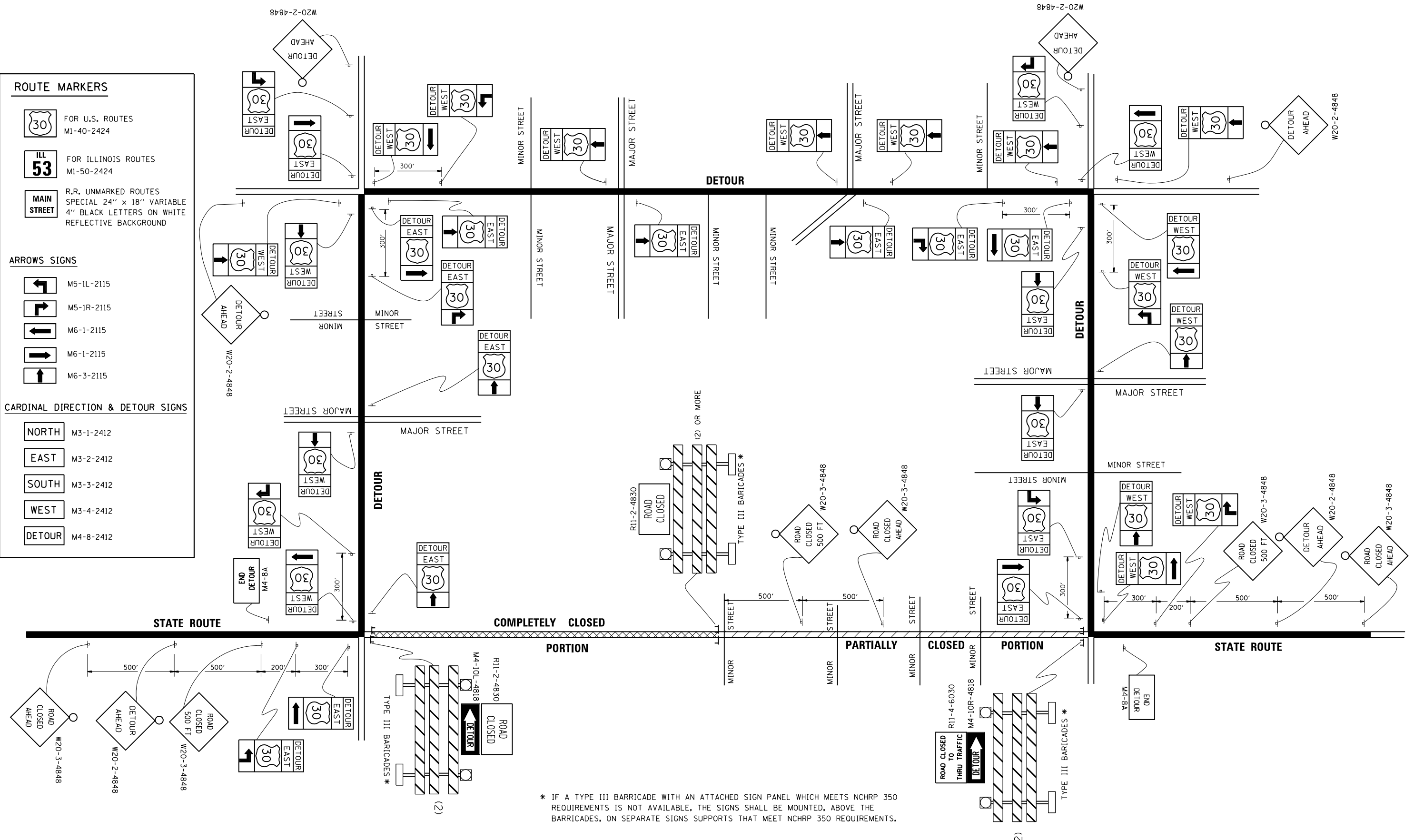
NORTH M3-1-2412

EAST M3-2-2412

SOUTH M3-3-2412

WEST M3-4-2412

DETOUR M4-8-2412



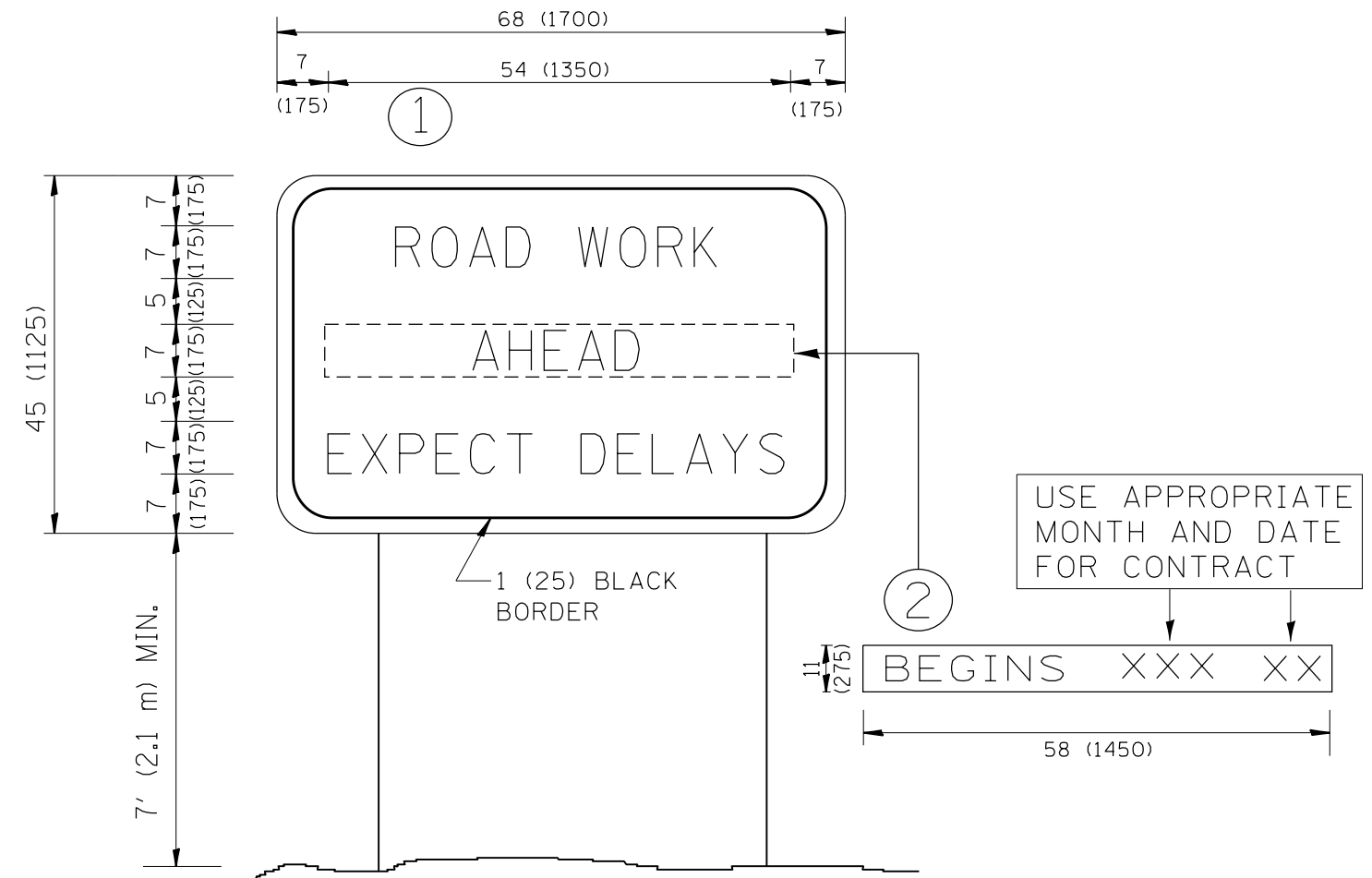
\* IF A TYPE III BARRICADE WITH AN ATTACHED SIGN PANEL WHICH MEETS NCHRP 350 REQUIREMENTS IS NOT AVAILABLE, THE SIGNS SHALL BE MOUNTED, ABOVE THE BARRICADES, ON SEPARATE SIGNS SUPPORTS THAT MEET NCHRP 350 REQUIREMENTS.

|   |                    |            |                            |
|---|--------------------|------------|----------------------------|
| FILE NAME =   | USER NAME = dahhnr | DESIGNED - | REVISED - 10-18-02         |
| p:\IL\084EBID\INTEG\Illinois.gov\PIW001\Documents\IDOT Offices\District 1\Projects\DI14\Drawings\Design\DistStd.dgn |                    | CHECKED -  | REVISED - R, BORO 09-14-09 |
|   |                    | DATE -     | REVISED -                  |
|   |                    |            | REVISED -                  |

**STATE OF ILLINOIS  
DEPARTMENT OF TRANSPORTATION**

|  |                         |      |         |
|--|-------------------------|------|---------|
| <b>DETOUR SIGNING<br/>FOR CLOSING STATE HIGHWAYS</b> |                         |      |         |
| SCALE: NONE  | SHEET NO. 1 OF 1 SHEETS | STA. | TO STA. |

|   |            |        |                           |           |
|---|------------|--------|---------------------------|-----------|
| F.A.U. RTE.                                       | SECTION    | COUNTY | TOTAL SHEETS              | SHEET NO. |
| 3565  | 2015-082-B | COOK   | 11                        | 9         |
| <b>TC-21</b>                                      |            |        | <b>CONTRACT NO. 62B81</b> |           |
| FED. ROAD DIST. NO. 1   ILLINOIS FED. AID PROJECT |            |        |                           |           |

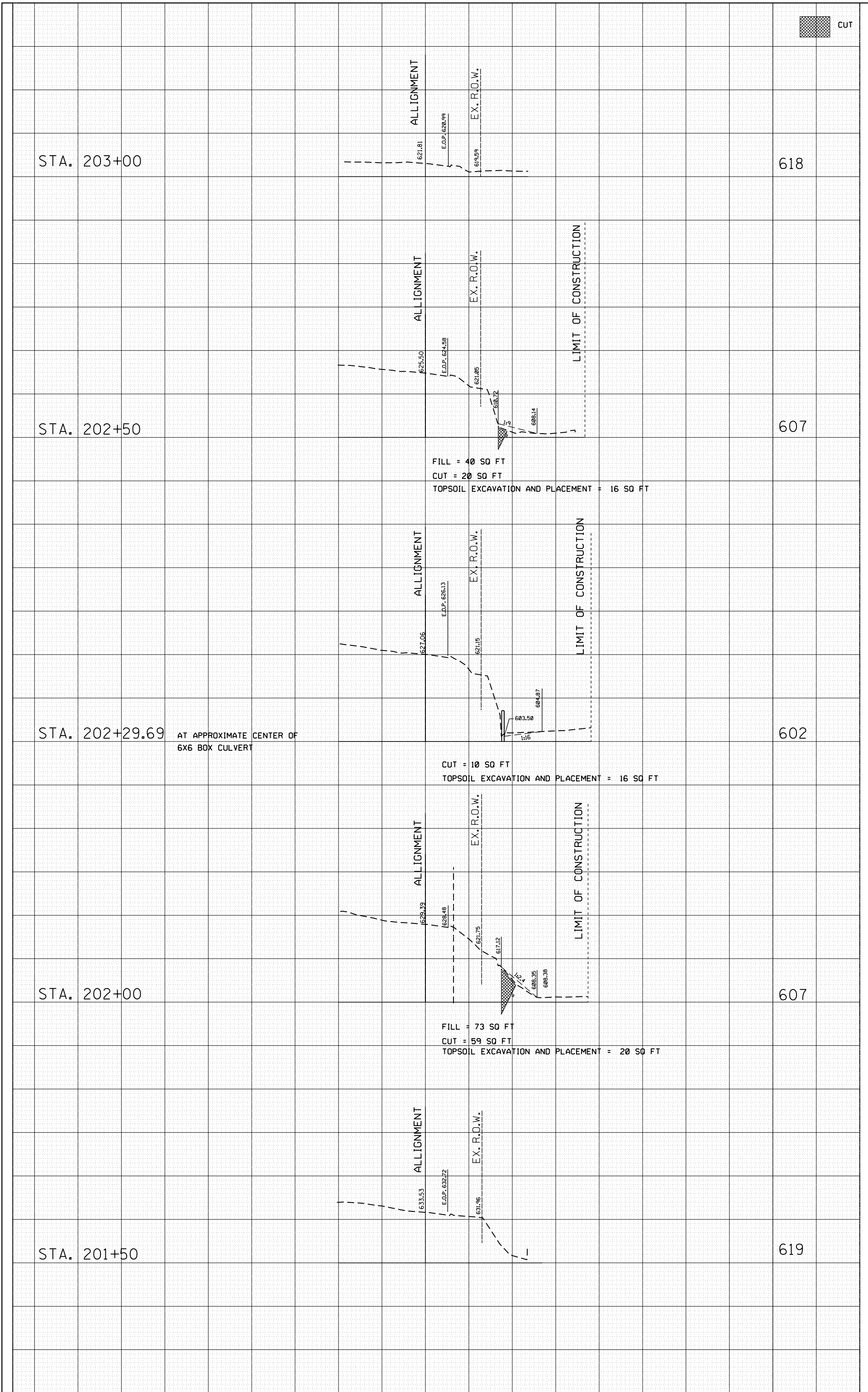


**NOTES:**

1. USE BLACK LETTERING ON ORANGE BACKGROUND.
2. ERECT SIGNS IN ADVANCE OF THE LOCATION FOR THE "ROAD CONSTRUCTION AHEAD" SIGN AT LOCATIONS AS DIRECTED BY THE ENGINEER.
3. ERECT SIGN ① WITH INSTALLED PANEL ② ONE WEEK PRIOR TO THE START OF CONSTRUCTION.
4. REMOVE PANEL ② SOON AFTER THE START OF CONSTRUCTION.
5. SEE SPECIAL PROVISION FOR "TEMPORARY INFORMATION SIGNING" FOR ADDITIONAL INFORMATION.
6. ONE SIGN ASSEMBLY EQUALS 25.70 SQ. FT. (2.3 SQ. M.)
7. SHALL BE PAID FOR AS TEMPORARY INFORMATION SIGNING.

ALL DIMENSIONS ARE IN INCHES (MILLIMETERS) UNLESS OTHERWISE SHOWN.

|   |                   |                                 |                            |   |   |              |            |                           |              |              |
|---|-------------------|---------------------------------|----------------------------|---|---|--------------|------------|---------------------------|--------------|--------------|
| FILE NAME =   | USER NAME = dahhr | DESIGNED -                      | REVISED - R. MIRS 09-15-97 | <b>STATE OF ILLINOIS<br/>DEPARTMENT OF TRANSPORTATION</b> | <b>ARTERIAL ROAD<br/>INFORMATION SIGN</b> | F.A.U. RTE.  | SECTION    | COUNTY                    | TOTAL SHEETS | SHEET NO.    |
| p:\11\084EBIDINTEG.illinois.gov\PWIDOT\Documents\DOT Offices\District 1\Projects\DI14\Drawings\Design\DistStd.dgn |                   |                                 | REVISED - R. MIRS 12-11-97 |   |   | 3565         | 2015-082-B | COOK                      | 11           | 10           |
| PLOT SCALE = 100.0000' / 1in.   | CHECKED -         | REVISED - T. RAMMACHER 02-02-99 |                            |   |   | <b>TC-22</b> |            | <b>CONTRACT NO. 62B81</b> |              |              |
| PLOT DATE = 7/8/2017  | DATE -            | REVISED - C. JUCIUS 01-31-07    |                            |   |   | SCALE: NONE  |            | SHEET NO. 1 OF 1 SHEETS   |              | STA. TO STA. |
| FED. ROAD DIST. NO. 1   ILLINOIS FED. AID PROJECT   |                   |                                 |                            |   |   |              |            |                           |              |              |



CUT

|   |                              |   |                 |                    |
|---|------------------------------|---|-----------------|--------------------|
| FILE NAME =   | DESIGNED -                   | REVISIONS   | SCALE           | DATE               |
| p:\1108\EBID\INTEC\Illinois.gov\PM\DOT\Documents\DOT Offices\District 1\Projects\014\116\CAD\DWG\1108\116\116.dwg | DATE                         | BY  | DATE            | DATE               |
| USER NAME = delham  | DATE                         | BY  | DATE            | DATE               |
| DESIGNED -  | REVISIONS                    | SCALE   | DATE            | DATE               |
| STATE OF ILLINOIS   | DEPARTMENT OF TRANSPORTATION | RAMP A CROSS SECTIONS<br>IL 171 (ARCHER AVE) OVER DITCH (SN 016-1406) |                 |                    |
| F.A.U. RTE. 3565  | SECTION 2015-082-B           | COUNTY COOK   | TOTAL SHEETS 11 | SHEET NO. 11       |
| SCALE:  | SHEET OF                     | SHEETS  | TO STA.         | CONTRACT NO. 62881 |
| ILLINOIS FED. AID PROJECT   |                              |   |                 |                    |

|              |               |
|--------------|---------------|
| NO.          | AREAS CHECKED |
| FINAL SURVEY |               |
| NOTE BOOK    |               |
| TEMPLATE     |               |
| PLOTTED      |               |
| BY           | DATE          |

|                 |               |
|-----------------|---------------|
| NO.             | AREAS CHECKED |
| ORIGINAL SURVEY |               |
| NOTE BOOK       |               |
| TEMPLATE        |               |
| PLOTTED         |               |
| BY              | DATE          |