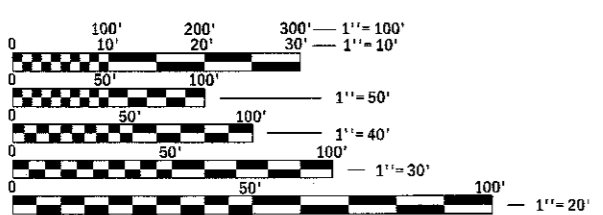


1. COVER SHEET
2. GENERAL NOTES, JOB SPECIFIC NOTES AND COMMITMENTS
- 3.-4. SUMMARY OF QUANTITIES
5. SCHEDULE OF QUANTITIES
6. TYPICAL SECTIONS
7. REMOVAL PLAN AND EROSION CONTROL
8. PROPOSED PLAN
9. DISTRICT CADD STANDARDS

HIGHWAY STANDARDS  
 280001-07  
 630001-11  
 701001-02  
 701006-05  
 701201-04  
 701901-06

DISTRICT STANDARDS  
 542016-D4



FULL SIZE PLANS HAVE BEEN PREPARED USING STANDARD ENGINEERING SCALES. REDUCED SIZED PLANS WILL NOT CONFORM TO STANDARD SCALES. IN MAKING MEASUREMENTS ON REDUCED PLANS, THE ABOVE SCALES MAY BE USED.

J.U.L.I.E.  
 JOINT UTILITY LOCATION INFORMATION FOR EXCAVATION  
 1-800-892-0123  
 OR 811

PROJECT ENGINEER CHRISTOPHER MAUSHARD 309-671-3453  
 PROJECT MANAGER MICHAEL HUDELSON 309-671-3466  
 CONTRACT NO. 68D74  
 CATALOG NO. 035519-00D

STATE OF ILLINOIS  
 DEPARTMENT OF TRANSPORTATION

PROPOSED  
 HIGHWAY PLANS

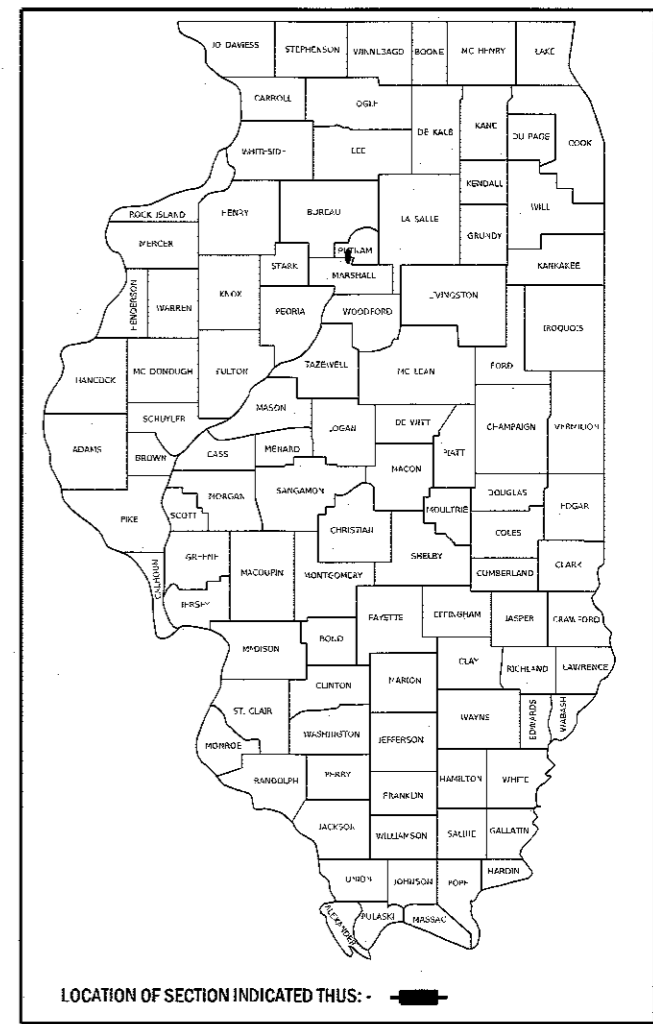
FAP ROUTE 2370 (IL 26)  
 SECTION (1)CLV, SLP

CONTRACT MAINTENANCE  
 PUTNAM COUNTY  
 C-94-093-17

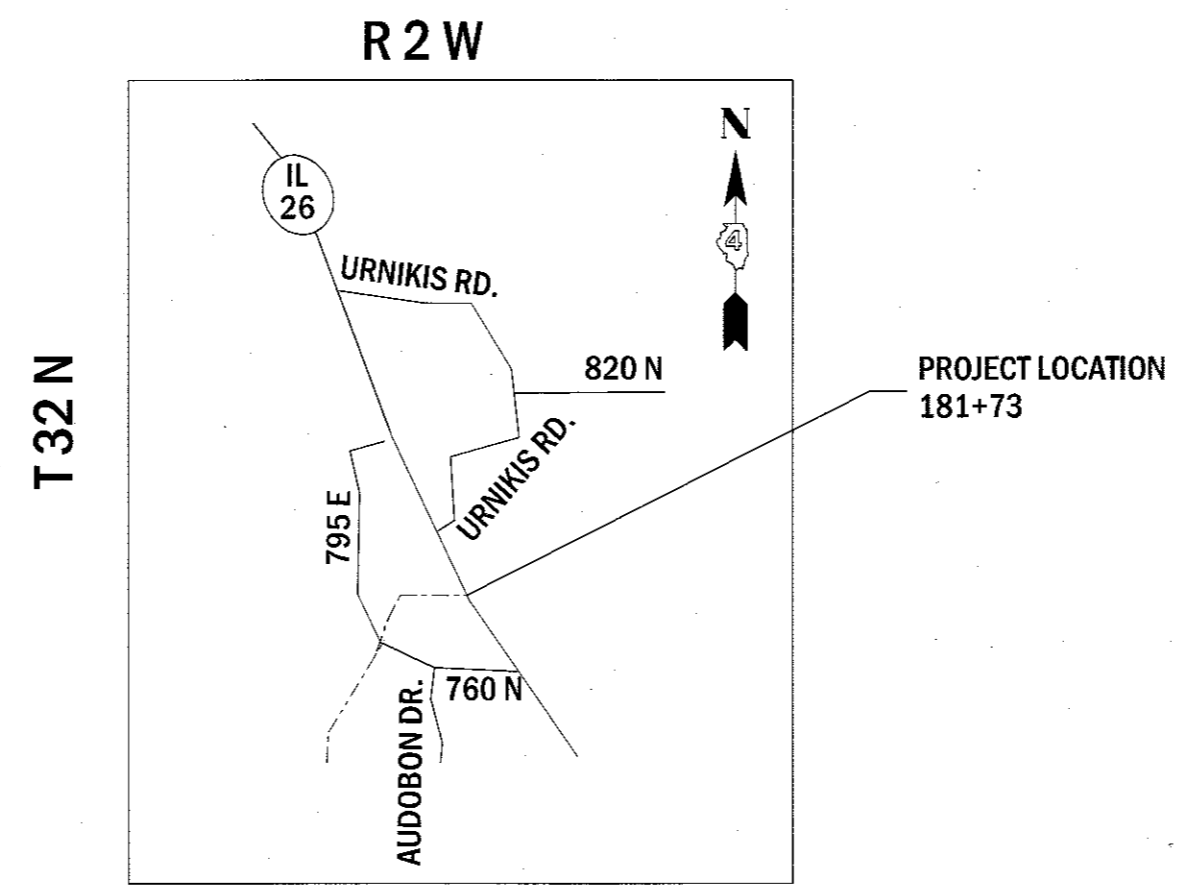
RECEIVED  
 JUL 14 2017  
 BUREAU OF  
 DESIGN & ENVIRONMENT

F.A.P. RTE.	SECTION	COUNTY	TOTAL SHEETS	SHEET NO.
2370	(1)CLV,SLP	PUTNAM	9	1
		ILLINOIS	CONTRACT NO. 68D74	

D-94-001-18



CULVERT REPAIR AND SLOPE STABILIZATION  
 ALONG IL 26, 2.84 MILES SOUTH OF IL 71



GROSS LENGTH = 100 FT. = 0.02 MILE  
 NET LENGTH = 100 FT. = 0.02 MILE

STATE OF ILLINOIS  
 DEPARTMENT OF TRANSPORTATION

SUBMITTED July 11 2017  
 Kensele A. Garnett (KSD)  
 REGION THREE ENGINEER

Aug 18 2017  
 M. Addis, PE  
 ENGINEER OF DESIGN AND ENVIRONMENT

Aug 18 2017  
 [Signature]  
 DIRECTOR OF PROGRAM DEVELOPMENT

PRINTED BY THE AUTHORITY  
 OF THE STATE OF ILLINOIS

REV

**GENERAL NOTES**

**AVAILABILITY OF ELECTRONIC FILES**

Micro Station and GEOPAK files of this project will be made available to the Contractor after contract award. If there is a conflict between the electronic files and the printed contract plans and documents, the printed contract plans and documents shall take precedence over the electronic files. The Contractor shall accept all risk associated with using the electronic files and shall hold the Department harmless for any errors or omissions in the electronic files and the data contained therein. Errors or delays resulting from the use of the electronic files by the Contractor shall not result in an extension of time for any interim or final completion date or shall not be considered cause for additional compensation. The Contractor shall not use, share, or distribute these electronic files except for the purpose of constructing this contract. Any claims by third parties due to use or errors shall be the responsibility of the Contractor. The Contractor shall include this disclaimer with the transfer of these electronic files to any other parties and shall include appropriate language binding them to similar responsibilities.

**COMMITMENTS**

Commitments are not to be altered without the written approval of all parties to which the commitment was made.

No commitments have been made.

**CLEARING**

At locations where clearing is indicated on the plans beyond the limits of the proposed excavation or embankment, the Contractor shall restore the disturbed earth by blading and shaping to blend with the adjacent ground. The clearing will not be paid for separately but shall be included in the cost of excavation pay items in the plans. Payment for reseeding or resodding will be as provided in the plans.

**ORDERING LENGTH CONFIRMATION – DRAINAGE ITEMS**

The Contractor shall consult with the Engineer in regard to the exact length of the box/pipe culverts, storm sewers, and/or pipe drains required prior to ordering these items.

**ENVIRONMENTAL REVIEWS**

Prior to the use of any proposed borrow areas, use areas (temporary access roads, detours, run-arounds, etc.) and/or waste areas, the Contractor shall file the required environmental resource request surveys according to Section 107.22 of the Standard Specifications. These surveys are required in order for the Department to conduct cultural and biological resource surveys for the proposed site.

Prior to any waste materials being removed from the construction site the required environmental resource surveys will need to be obtained and filed by the Contractor. Excess waste products removed from the construction site shall be disposed of as required in Section 202.03 of the Standard Specifications.

Any protruding metal bars shall be removed prior to the disposal of broken concrete at approved disposal sites.

The required environmental resource documentation shall include the following:

- \* BDE Form 2289 (Environmental Survey Request)
- \* BDE Form 2290 (Waste/Use Area Review)
- \* A location map showing the size limits and location of the use area
- \* Color photographs depicting the use area
- \* Borrow Area Entry Agreement form-D4 PI0101

Please note that a minimum of four weeks shall be allowed for the District to obtain the required environmental clearances and six weeks for the required borrow site environmental clearances.

**JOB SPECIFIC NOTES**

**POROUS GRANULAR EMBANKMENT**

All Porous Granular Embankment shall be CA 7.

MODEL D:\6464  
 FILE NAME: C:\Users\jguyys\Desktop\88074\88074-CADD.dgn

USLR NAME = aubreygs	DESIGNED -	REVISED -	STATE OF ILLINOIS DEPARTMENT OF TRANSPORTATION	F.A.P. RTE.	SECTION	COUNTY	TOTAL SHEETS	SHEET NO.
	DRAWN -	REVISED -		2370	(1)CLV.SLP	PUTNAM	9	2
PLOT SCALE = 100.0000' / In.	CHECKED -	REVISED -		SCALE: SHEET OF SHEETS STA. TO STA.		CONTRACT NO. 68D74		
PLOT DATE = 7/13/2017	DATE -	REVISED -		ILLINOIS FED. AID PROJECT				

CODE NO.	ITEM	UNIT	TOTAL QUANTITY	CONST. CODE
				PUTNAM COUNTY 100% STATE ✓ 0004 ✓
20100500	TREE REMOVAL, ACRES	ACRE	0.5	0.5
20200100	EARTH EXCAVATION	CU YD	3033	3033
20700110	POROUS GRANULAR EMBANKMENT	TON	3950	3950
25100630	EROSION CONTROL BLANKET	SQ YD	2420	2420
28000400	PERIMETER EROSION BARRIER	FOOT	200	200
28000500	INLET AND PIPE PROTECTION	EACH	1	1
28100825	STONE DUMPED RIPRAP, CLASS B3	TON	650	650
28100830	STONE DUMPED RIPRAP, CLASS B4	TON	45	45
28200200	FILTER FABRIC	SQ YD	217	217
50105220	PIPE CULVERT REMOVAL	FOOT	80	80
50800105	REINFORCEMENT BARS	POUND	35	35
52200020	TEMPORARY SOIL RETENTION SYSTEM	SQ FT	2275	2275
54215559	METAL END SECTIONS 24"	EACH	1	1
54248510	CONCRETE COLLAR	CU YD	0.6	0.6

RURAL

199

CODE NO.	ITEM	UNIT	TOTAL QUANTITY	CONST. CODE
				PUTNAM COUNTY 100% STATE 0004
542D4009	PIPE CULVERTS, CLASS D, TYPE 6 24"	FOOT	80	80
54390170	INSERTION CULVERT LINER 22"	FOOT	145	145
63301210	REMOVE AND RE-ERECT STEEL PLATE BEAM GUARD RAIL, TYPE A	FOOT	50	50
67100100	MOBILIZATION	L SUM	1	1
70100450	TRAFFIC CONTROL AND PROTECTION, STANDARD 701201	L SUM	1	1

RURAL

FILE NAME = C:\Users\aubreyga\Desktop\68074\0468074-CADD.dgn	USER NAME = aubreyga	DESIGNED -	REVISED -
		DRAWN -	REVISED -
	PLOT SCALE = 100.0000 / 1 in.	CHECKED -	REVISED -
	PLOT DATE = 7/11/2017	DATE -	REVISED -

**STATE OF ILLINOIS  
DEPARTMENT OF TRANSPORTATION**

**SUMMARY OF QUANTITIES**

F.A.P. RTE.	SECTION	COUNTY	TOTAL SHEETS	SHEET NO.
2370	01CLV,SLP	PUTNAM	9	4
		CONTRACT NO. 68074		
ILLINOIS FED. AID PROJECT				

REV

TREE REMOVAL, ACRES	
LOCATION	ACRE
JOBSITE	0.5
TOTAL	0.5

EARTH EXCAVATION	
LOCATION	CU YD
181+73 RT	3033
TOTAL	3033

PIPE CULVERT REMOVAL	
LOCATION	FOOT
181+73 RT	80
TOTAL	80

EROSION CONTROL BLANKET	
LOCATION	SQ FT
JOBSITE	2420
TOTAL	2420

POROUS GRANULAR EMBANKMENT	
LOCATION	TON
181+73 RT	3950
TOTAL	3950

REINFORCEMENT BARS	
LOCATION	POUND
181+73 RT	35
TOTAL	35

PERIMETER EROSION BARRIER	
LOCATION	FOOT
JOBSITE	200
TOTAL	200

STONE DUMPED RIP RAP CL B4	
LOCATION	TON
181+73 RT	45
TOTAL	45

METAL END SECTIONS 24"	
LOCATION	EACH
181+73 RT	1
TOTAL	1

INLET AND PIPE PROTECTION	
LOCATION	EACH
JOBSITE	1
TOTAL	1

STONE DUMPED RIP RAP CL B3	
LOCATION	TON
181+73 LT	50
181+73 RT	600
TOTAL	650

CONCRETE COLLAR	
LOCATION	CU YD
181+73 RT	0.6
TOTAL	0.6

MOBILIZATION	
LOCATION	L SUM
JOBSITE	1
TOTAL	1

FILTER FABRIC	
LOCATION	SQ YD
181+73 LT	150
181+73 RT	67
TOTAL	217

PIPE CULVERT, CL D, TY 6 24"	
LOCATION	FOOT
181+73 RT	80
TOTAL	80

TRAFFIC CONTROL AND PROTECTION, STD 701201	
LOCATION	L SUM
JOBSITE	1
TOTAL	1

TEMPORARY SOIL RETENTION SYSTEM	
LOCATION	SQ FT
181+73 RT	2275
TOTAL	2275

INSERTION CULVERT LINER 22"	
LOCATION	FOOT
181+73 RT	145
TOTAL	145

REMOVE AND RE-ERECT STEEL PLATE BEAM GUARDRAIL, TY A	
LOCATION	FOOT
181+73 RT	50
TOTAL	50

MODEL: Default  
 FILE: \\miller-cv\server\aubreyrgs\Desktop\68D74\68D74-CADD.dgn

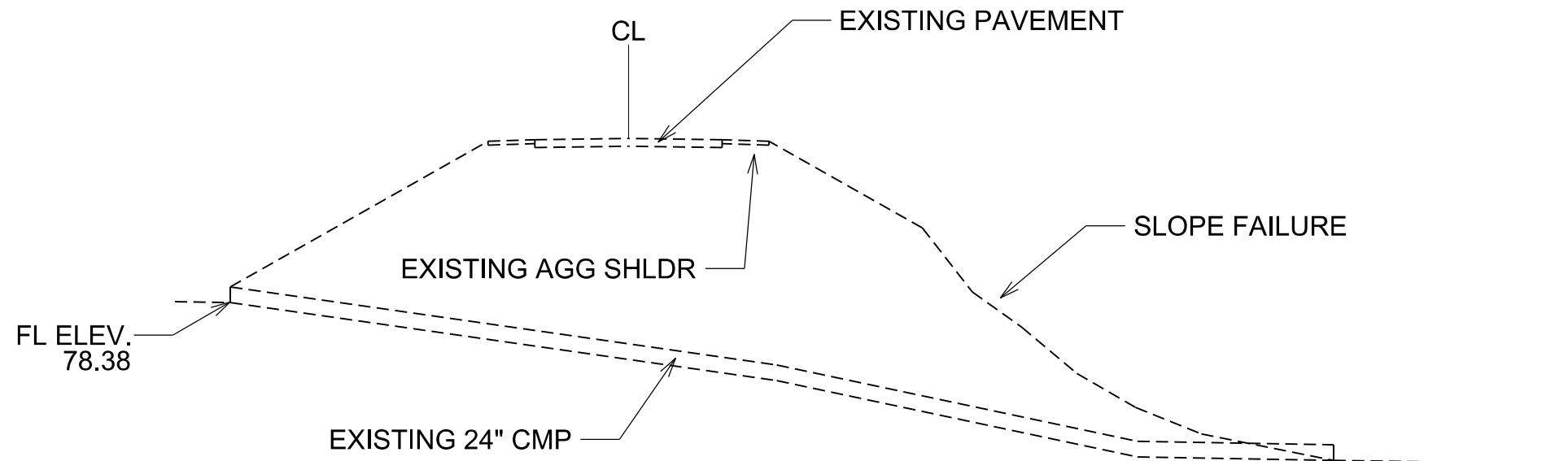
USER NAME = aubreyrgs	DESIGNED -	REVISED -
	DRAWN -	REVISED -
PLOT SCALE = 100.0000' / in.	CHECKED -	REVISED -
PLOT DATE = 7/11/2017	DATE -	REVISED -

**STATE OF ILLINOIS  
DEPARTMENT OF TRANSPORTATION**

**SCHEDULE OF QUANTITIES**

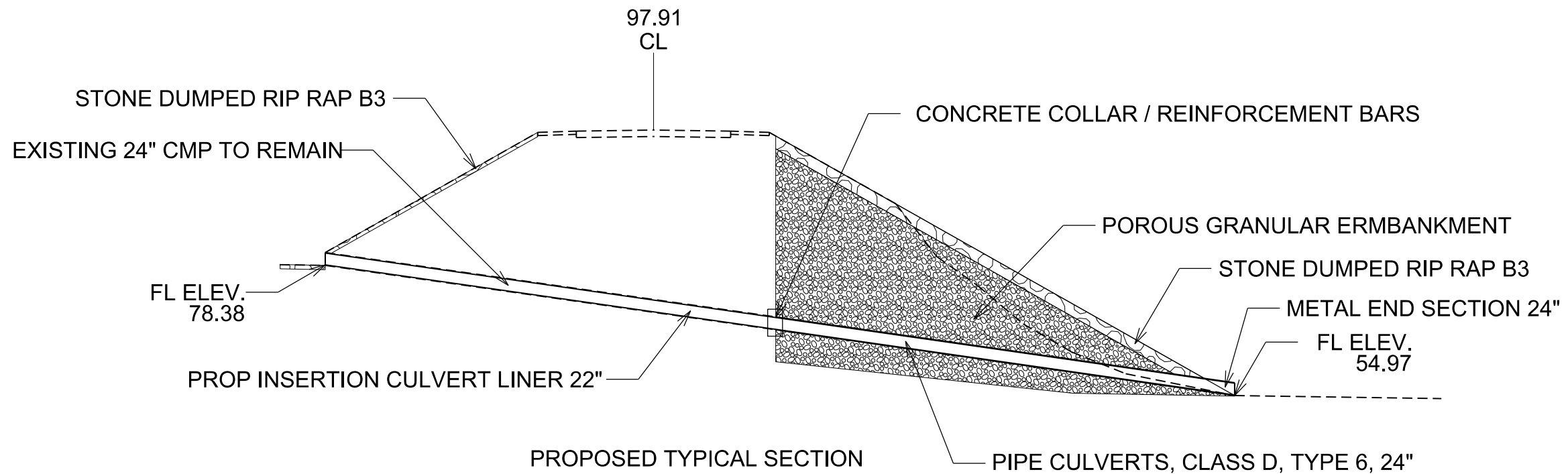
SCALE: SHEET OF SHEETS STA. TO STA.

F.A.P. RTE.	SECTION	COUNTY	TOTAL SHEETS	SHEET NO.
2370	(1)CLV,SLP	PUTNAM	9	5
CONTRACT NO. 68D74			ILLINOIS FED. AID PROJECT	



EXISTING TYPICAL SECTION  
IL 26 STA 181+73  
(LOOKING SOUTH)

BENCHMARK = TOP CORNER OF GUARDRAIL POST  
MARKED WITH SPRAY PAINT AND RIBBON  
BENCHMARK ELEVATION= 100.00



PROPOSED TYPICAL SECTION  
IL 26 STA 181+73  
(LOOKING SOUTH)

NOTE: CAVITY BETWEEN EX. CMP AND  
"SNAP TITE" CULVERT LINER TO BE SEALED  
WITH MORTAR AND FILLED WITH GROUT

MODEL: Default  
FILE: Model\_C:\Users\aubreygs\Desktop\68D74\68D74-CADD.dgn

USER NAME = aubreygs	DESIGNED -	REVISED -
	DRAWN -	REVISED -
PLOT SCALE = 100,0000' / in.	CHECKED -	REVISED -
PLOT DATE = 7/11/2017	DATE -	REVISED -

STATE OF ILLINOIS  
DEPARTMENT OF TRANSPORTATION

TYPICAL SECTIONS

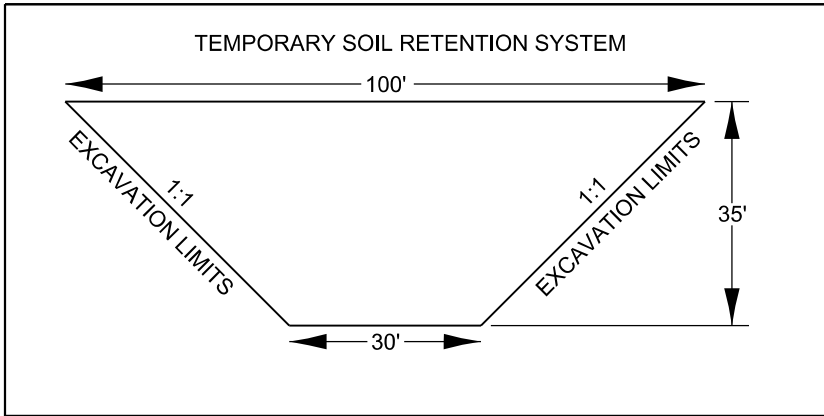
SCALE: SHEET OF SHEETS STA. TO STA.

F.A.P. RTE.	SECTION	COUNTY	TOTAL SHEETS	SHEET NO.
2370	(1) CLV,SLP	PUTNAM	9	6
CONTRACT NO. 68D74			ILLINOIS FED. AID PROJECT	

DATE	
BY	
SURVEYED	
PLOTTED	
ALIGNMENT CHECKED	
NOTE BOOK	
NO.	
CADD FILE NAME	
PLAN	
NO.	

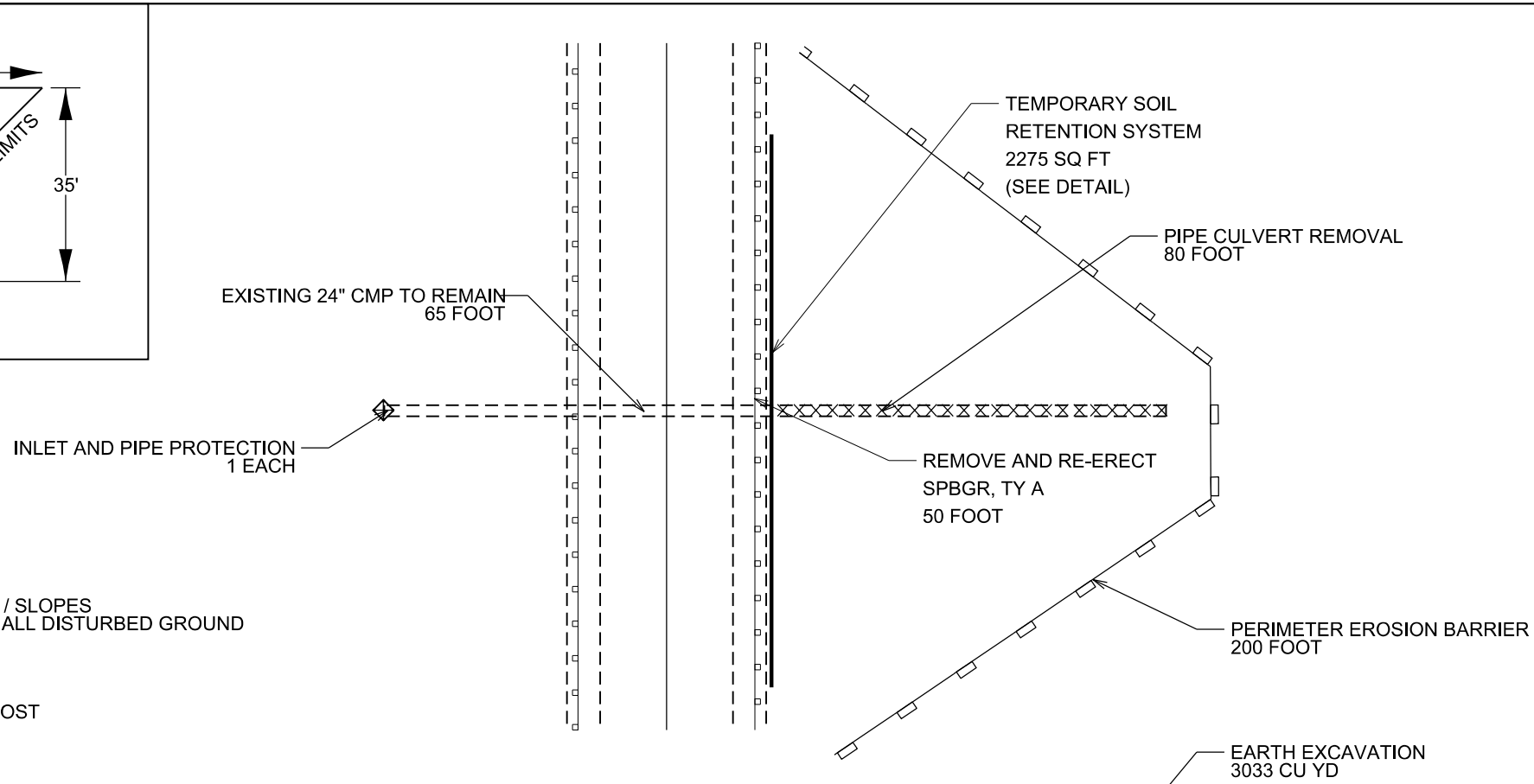
DATE	
BY	
SURVEYED	
PLOTTED	
GRADES CHECKED	
NOTE BOOK	
NO.	
STRUCTURE NOTATION	
PROFILE	
NO.	

MODEL: Default  
FILE NAME: C:\Users\aubreygs\Desktop\68D74\68D74-CADD.dgn



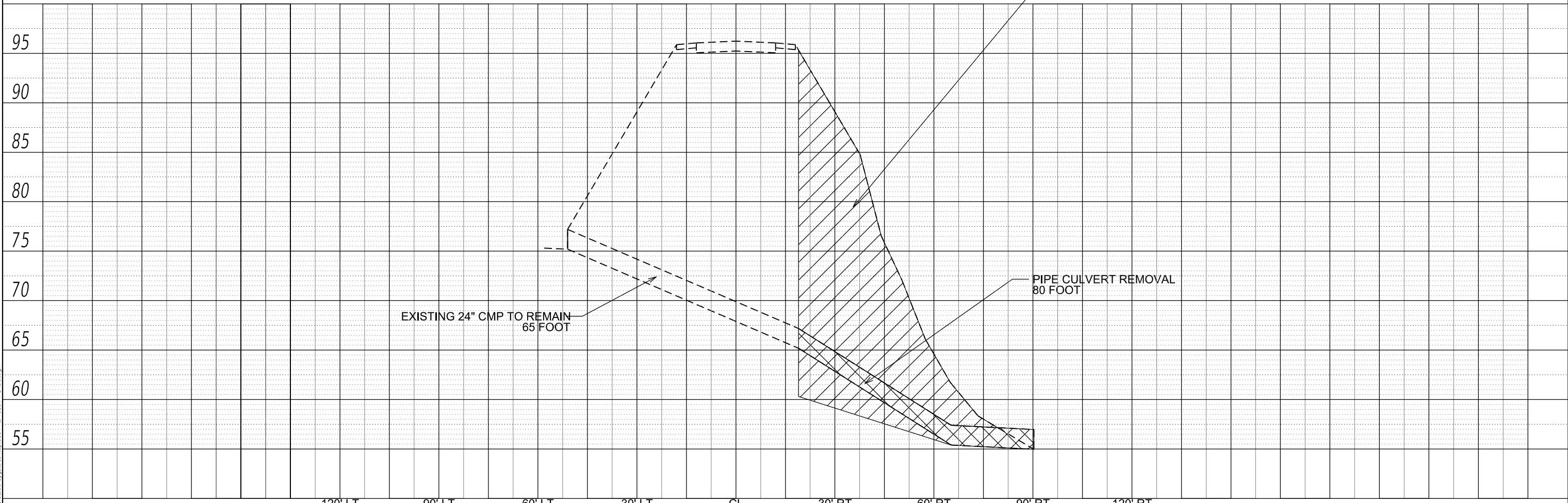
NOTE: TREE REMOVAL FOR ACCESS TO PIPES / SLOPES  
EROSION CONTROL BLANKET TO BE USED ON ALL DISTURBED GROUND

BENCHMARK = TOP CORNER OF GUARDRAIL POST  
MARKED WITH SPRAY PAINT AND RIBBON  
BENCHMARK ELEVATION= 100.00



ROW LT	135' @ 176+00
	152.4' @ 181+23
	154.1' @ 181+73
	155.0' @ 182+00
	151.2' @ 182+23
	143.0' @ 182+74
ROW RT	120.0' @ 181+00
	117.2' @ 181+23
	111.2' @ 181+73
	105.2' @ 182+23
	90.0' @ 183+50

NOT TO SCALE



USER NAME = aubreygs	DESIGNED -	REVISED -
	DRAWN -	REVISED -
PLOT SCALE = 100.0000' / in.	CHECKED -	REVISED -
PLOT DATE = 7/11/2017	DATE -	REVISED -

STATE OF ILLINOIS  
DEPARTMENT OF TRANSPORTATION

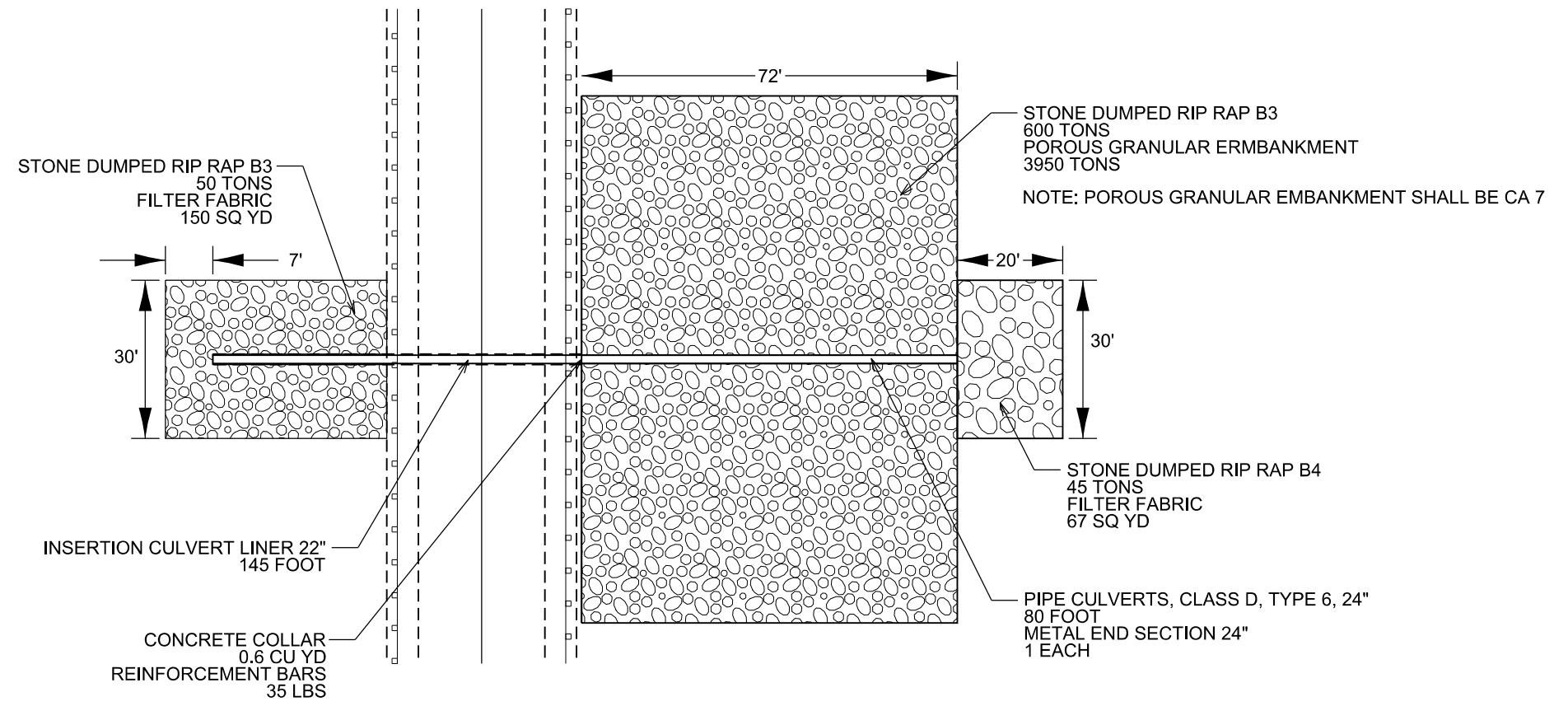
REMOVAL PLAN AND EROSION CONTROL				
SCALE:	SHEET	OF	SHEETS	STA.
				TO STA.

F.A.P. RTE.	SECTION	COUNTY	TOTAL SHEETS	SHEET NO.
2370	(1) CLV,SLP	PUTNAM	9	7
			CONTRACT NO. 68D74	
		ILLINOIS	FED. AID PROJECT	

PLAN	SURVEYED	DATE
	PLOTTED	
	ALIGNMENT CHECKED	
	GRADE CHECKED	
	STRUCTURE NOTATION CHECKED	
	NOTE BOOK NO.	
	FILE NAME	

PROFILE	SURVEYED	DATE
	PLOTTED	
	GRADES CHECKED	
	STRUCTURE NOTATION CHECKED	
	NOTE BOOK NO.	
	FILE NAME	

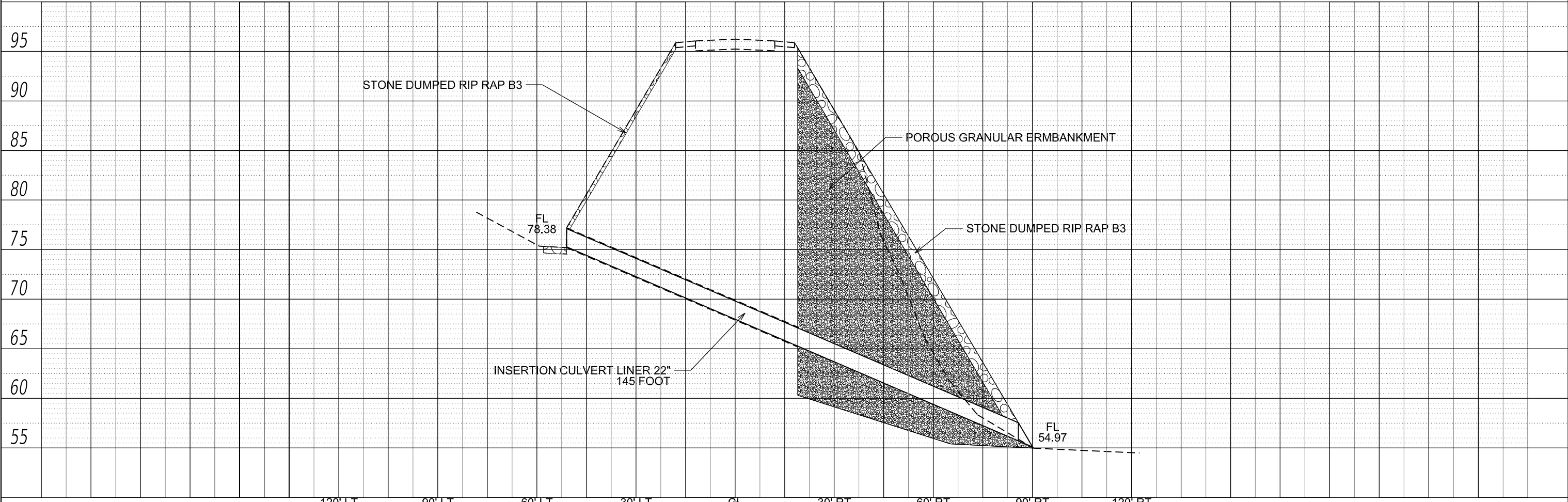
MODEL: Default  
FILE NAME: C:\Users\aubreygs\Desktop\68D74\10468D74-CADD.dgn



BENCHMARK = TOP CORNER OF GUARDRAIL POST  
MARKED WITH SPRAY PAINT AND RIBBON  
BENCHMARK ELEVATION= 100.00

ROW LT	135' @ 176+00
	152.4' @ 181+23
	154.1' @ 181+73
	155.0' @ 182+00
	151.2' @ 182+23
	143.0' @ 182+74
ROW RT	120.0' @ 181+00
	117.2' @ 181+23
	111.2' @ 181+73
	105.2' @ 182+23
	90.0' @ 183+50

NOT TO SCALE



USER NAME = aubreygs	DESIGNED -	REVISED -
	DRAWN -	REVISED -
PLOT SCALE = 100,0000' / in.	CHECKED -	REVISED -
PLOT DATE = 7/11/2017	DATE -	REVISED -

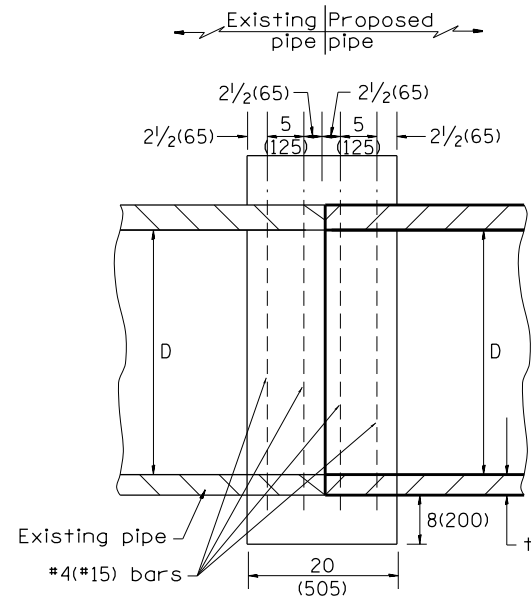
STATE OF ILLINOIS  
DEPARTMENT OF TRANSPORTATION

PROPOSED PLAN

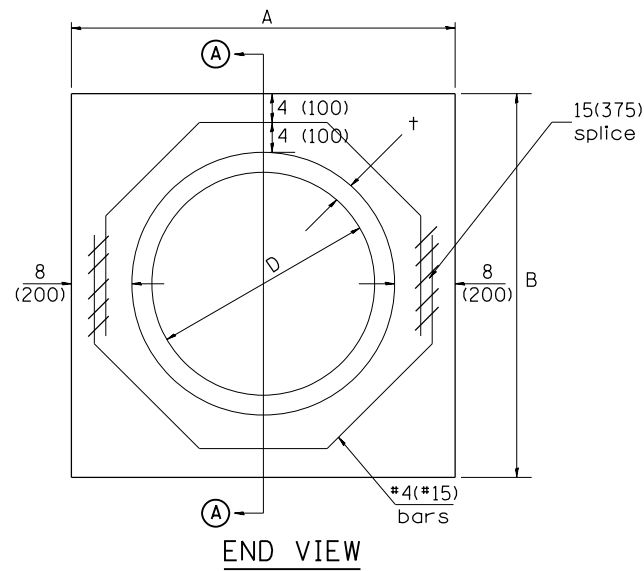
SCALE: SHEET OF SHEETS STA. TO STA.

F.A.P. RTE.	SECTION	COUNTY	TOTAL SHEETS	SHEET NO.
2370	(1) CLV,SLP	PUTNAM	9	8
CONTRACT NO. 68D74				
ILLINOIS FED. AID PROJECT				

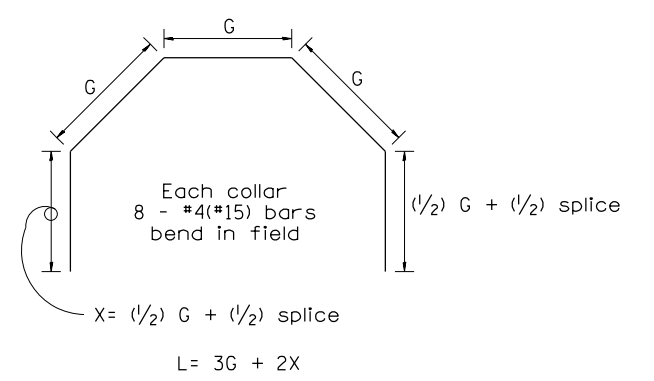




SECTION A - A



END VIEW



Each Collar									
					Reinforcement Bars				
D	t	A	B	CL. SI CONC.	G	X	L	Weight	
in (mm)	in (mm)	ft (m)	ft (m)	cu.yd. (m <sup>3</sup> )	in (mm)	in (mm)	ft (m)	lb (kg)	
12 (300)	2.00 (51)	2.67 (0.814)	2.67 (0.814)	0.4 (0.270)	9 <sup>15</sup> / <sub>16</sub> (253)	12 <sup>7</sup> / <sub>16</sub> (317)	4.57 (1.393)	24 (11)	
15 (375)	2.25 (57)	2.96 (0.902)	2.96 (0.902)	0.4 (0.315)	11 <sup>3</sup> / <sub>8</sub> (290)	13 <sup>3</sup> / <sub>16</sub> (335)	5.05 (1.541)	27 (12)	
18 (450)	2.50 (64)	3.25 (0.991)	3.25 (0.991)	0.5 (0.362)	12 <sup>13</sup> / <sub>16</sub> (327)	13 <sup>7</sup> / <sub>8</sub> (354)	5.54 (1.689)	30 (14)	
21 (525)	2.75 (70)	3.54 (1.079)	3.54 (1.079)	0.5 (0.411)	14 <sup>1</sup> / <sub>4</sub> (364)	14 <sup>5</sup> / <sub>8</sub> (372)	6.02 (1.836)	32 (15)	
24 (600)	3.00 (76)	3.83 (1.167)	3.84 (1.167)	0.6 (0.460)	15 <sup>11</sup> / <sub>16</sub> (401)	15 <sup>5</sup> / <sub>16</sub> (391)	6.51 (1.984)	35 (16)	
27 (675)	3.25 (83)	4.13 (1.259)	4.13 (1.259)	0.7 (0.516)	17 <sup>1</sup> / <sub>4</sub> (438)	16 <sup>1</sup> / <sub>16</sub> (409)	6.99 (2.131)	37 (17)	
30 (750)	3.50 (89)	4.42 (1.347)	4.42 (1.347)	0.7 (0.570)	18 <sup>11</sup> / <sub>16</sub> (475)	16 <sup>3</sup> / <sub>4</sub> (428)	7.48 (2.279)	40 (18)	
33 (825)	3.75 (95)	4.71 (1.436)	4.71 (1.436)	0.8 (0.624)	20 <sup>1</sup> / <sub>8</sub> (512)	17 <sup>1</sup> / <sub>2</sub> (446)	7.96 (2.426)	43 (19)	
36 (900)	4.00 (102)	5.00 (1.524)	5.00 (1.524)	0.9 (0.682)	21 <sup>9</sup> / <sub>16</sub> (549)	18 <sup>3</sup> / <sub>16</sub> (465)	8.44 (2.574)	45 (20)	
42 (1050)	4.50 (114)	5.58 (1.701)	5.58 (1.701)	1.0 (.800)	24 <sup>7</sup> / <sub>16</sub> (622)	19 <sup>3</sup> / <sub>4</sub> (501)	9.41 (2.869)	50 (23)	
48 (1200)	5.00 (127)	6.17 (1.881)	6.17 (1.881)	1.2 (0.930)	27 <sup>5</sup> / <sub>16</sub> (696)	21 <sup>3</sup> / <sub>16</sub> (538)	10.38 (3.164)	55 (25)	

GENERAL NOTES

1. THE COLLAR SHALL BE CONSTRUCTED ENTIRELY OF CLASS SI CONCRETE IN ACCORDANCE WITH THE APPLICABLE PORTIONS OF SECTION 503 OF THE STANDARD SPECIFICATIONS. REINFORCEMENT BARS SHALL CONFORM TO SECTION 508.
2. This work shall be paid for by the cubic yard (cubic meter) for CONCRETE COLLAR and by the pound (kg) for REINFORCEMENT BARS.

QUANTITIES	
CALC. BY: R. J. D.	2-2-98
CHECKED BY: R. D. H.	2-6-98
	DATE:

QUANTITY CALCULATIONS ARE ON FILE AT THE DISTRICT 4 OFFICE; BUREAU OF PROJECT IMPLEMENTATION; DOCUMENTATION SECTION

All dimensions are in inches (millimeters) unless otherwise noted.

01-01-97	RENUM. B-8.03, NEW REVISION BOX, REVISED	T.P.	09-01-00	CORRECT WEIGHT	J.A.	<b>STATE OF ILLINOIS DEPARTMENT OF TRANSPORTATION</b>	<b>PIPE CULVERT EXTENSION COLLAR (WITHOUT END SECTION)</b>	NOT TO SCALE	CADD STD. 542016-D4	F.A.P. RTE.	SECTION	COUNTY	TOTAL SHEETS	SHEET NO.
	TITLE BOX, ADDED QUANTITY CALCULATION BOX		10-16-06	REV. TO 2007 SPEC., CORRECT mm UNITS	M.A.					2370	(1) CLV,SLP	PUTNAM	9	9
04-01-97	CORRECT BAR	J.A.	2-15-11	ADDED GENERAL NOTE #2	R.D.					CONTRACT NO. 68D74				
02-10-98	REVISE QUANTITIES	J.A.								FED. ROAD DIST. NO.	ILLINOIS	FED. AID PROJECT		