

STATE OF ILLINOIS
DEPARTMENT OF TRANSPORTATION

F.A.P. RTE.	SECTION	COUNTY	TOTAL SHEETS	SHEET NO.
327	D7 PATCHING 2018-5	RICHLAND	3	1
		ILLINOIS	CONTRACT NO. 74807	

FOR INDEX OF SHEETS, SEE SHEET NO. 2
ADT = 4750, 24% TRUCKS

PROPOSED HIGHWAY PLANS

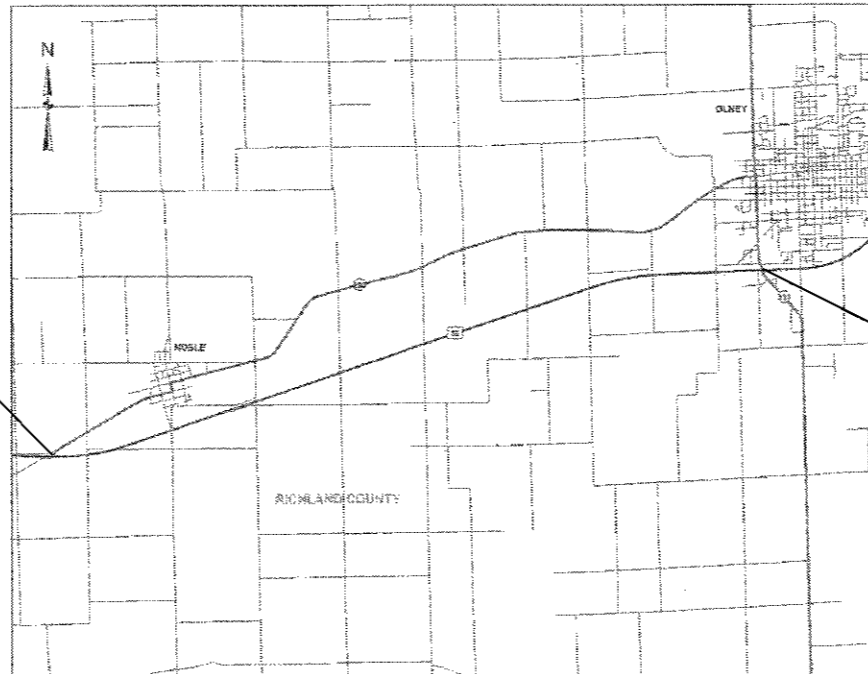
F.A.P. ROUTE 327 (U.S. 50)
SECTION D7 PATCHING 2018-5

PATCHING
RICHLAND COUNTY

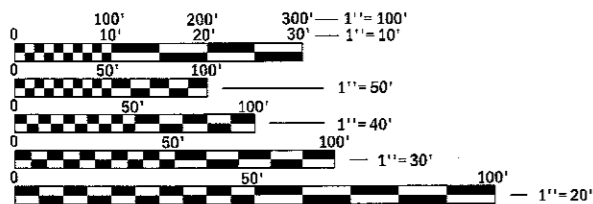
C-97-061-17



BEGIN PROJECT
MP 1.87



END PROJECT
MP 10.61



FULL SIZE PLANS HAVE BEEN PREPARED USING STANDARD ENGINEERING SCALES. REDUCED SIZED PLANS WILL NOT CONFORM TO STANDARD SCALES. IN MAKING MEASUREMENTS ON REDUCED PLANS, THE ABOVE SCALES MAY BE USED.

J.U.L.I.E.
JOINT UTILITY LOCATION INFORMATION FOR EXCAVATION
1-800-892-0123
OR 811

PROJECT ENGINEER: TOM RONAN
PROJECT MANAGER: TOM RONAN
PHONE: (217) 342-8320
CONTRACT NO. 74807

GROSS LENGTH = 46147.2 FT. = 8.740 MILE
NET LENGTH = 46147.2 FT. = 8.740 MILE

STATE OF ILLINOIS
DEPARTMENT OF TRANSPORTATION

SUBMITTED June 29 2017
Jeffrey M. South
REGIONAL ENGINEER

August 18 2017
Kathleen M. Addis
ENGINEER OF DESIGN AND ENVIRONMENT

August 18 2017
Michelle A. [Signature]
DIRECTOR OF PROGRAM DEVELOPMENT

PRINTED BY THE AUTHORITY
OF THE STATE OF ILLINOIS

INDEX OF SHEETS

SHEET NO.	ITEM
1	COVER SHEET
2	INDEX OF SHEETS, GENERAL NOTES & SCHEDULE OF QUANTITIES
3	SUMMARY OF QUANTITIES

THE FOLLOWING STANDARDS ARE A PART OF THESE PLANS AND ARE INCLUDED AFTER SHEET NO. 3:

STD. NO.	DESCRIPTION
000001-06	STANDARD SYMBOLS, ABBREVIATIONS AND PATTERNS
001001-02	AREAS OF REINFORCEMENT BARS
001006	DECIMAL OF AN INCH AND OF A FOOT
420001-08	PAVEMENT JOINTS
420701-03	PAVEMENT WELDED WIRE REINFORCEMENT
442101-07	CLASS B PATCHES
701001-02	OFF-ROAD OPERATIONS, 2L, 2W, MORE THAN 15' AWAY
701006-05	OFF-RD OPERATIONS, 2L, 2W, 15' TO 24" FROM PAVEMENT EDGE
701011-04	OFF-RD MOVING OPERATIONS, 2L, 2W, DAY ONLY
701201-04	LANE CLOSURE, 2L, 2W, DAY ONLY, FOR SPEEDS ≥ 45 MPH
701301-04	LANE CLOSURE, 2L, 2W, SHORT TIME OPERATIONS
701901-06	TRAFFIC CONTROL DEVICES

GENERAL NOTES

THIS SECTION SHALL BE CONSTRUCTED IN ACCORDANCE WITH THE PLANS; THE "STANDARD SPECIFICATIONS FOR ROAD AND BRIDGE CONSTRUCTION" ADOPTED APRIL 1, 2016; AND THE SPECIAL PROVISIONS INCLUDED IN THE PROPOSAL.

THIS PROJECT IS LOCATED ON US ROUTE 50 IN RICHLAND COUNTY. THE PROJECT STARTS AT THE INTERSECTION OF US 50/ILL 250 WEST OF NOBLE AND EXTENDS EAST FOR APPROXIMATELY 8.74 MILES TO ILLINOIS ROUTE 130 AT OLNEY. THE WORK INCLUDED IN SECTION D7 PATCHING 2018-5 CONSISTS OF CLASS B PAVEMENT PATCHING, TRAFFIC CONTROL, AND ANY OTHER WORK NECESSARY TO COMPLETE THE SECTION.

URBAN/RURAL SPLIT - RURAL IS ILL 250 TO M.P. 8.54, URBAN IS M.P. 8.54 TO ILL 130.

THE ESTIMATED NUMBER OF PATCHES IS AS FOLLOWS:

	TYPE II	TYPE III	TYPE IV
EASTBOUND	102	4	2
WESTBOUND	116	3	1

THE ACTUAL LOCATIONS OF PAVEMENT PATCHING AND FINAL QUANTITIES SHALL BE DETERMINED BY THE ENGINEER IN THE FIELD.

SCHEDULE OF QUANTITIES

	CLASS B PATCHES, TYPE II, 13"	CLASS B PATCHES, TYPE III, 13"	CLASS B PATCHES, TYPE IV, 13"	DOWEL BARS 1 1/2"	WELDED WIRE REINFORCEMENT	SAW CUTS	TIE BARS 3/4"
RICHLAND COUNTY	SQ YD	SQ YD	SQ YD	EACH	SQ YD	FOOT	EACH
RURAL							
EASTBOUND	466	56	27	1240	83	3147	23
WESTBOUND	530	52	40	1380	92	3520	21
RURAL TOTAL	996	108	67	2620	175	6667	44
URBAN							
EASTBOUND	402	16	40	920	56	2411	14
WESTBOUND	444	0	0	1020	0	2579	0
URBAN TOTAL	846	16	40	1940	56	4990	14
PROJECT TOTALS	1842	124	107	4560	231	11657	58

FILE NAME =	USER NAME = stefflenk	DESIGNED -	REVISED -	STATE OF ILLINOIS DEPARTMENT OF TRANSPORTATION	INDEX OF SHEETS, GENERAL NOTES & SCHEDULE OF QUANTITIES	F.A.P. RTE.	SECTION	COUNTY	TOTAL SHEETS	SHEET NO.	
g:\110846\BID\INTEG.ILLINDS.GOV\PNF\DOT\Doc\umess\DOT Offices\Dist\kt 7\Projects\74807\CADD\atCAD\9-09-17-17-stc-gennote.dgn		CHECKED -	REVISED -			327	D7 PATCHING 2018-5	RICHLAND	3	2	
PLOT SCALE = 100.0000' / in.		DATE -	REVISED -			CONTRACT NO. 74807					
PLOT DATE = 7/13/2017						ILLINOIS FED. AID PROJECT					

100 %
STATE

SUMMARY OF QUANTITIES			TOTAL QUANTITIES	CONSTRUCTION TYPE CODE	
CODE NO	ITEM	UNIT		0004 RICHLAND (RURAL)	0004 RICHLAND (URBAN)
44200050	WELDED WIRE REINFORCEMENT	SQ YD	231	175	56
44201007	CLASS B PATCHES, TYPE II, 13 INCH	SQ YD	1842	996	846
44201011	CLASS B PATCHES, TYPE III, 13 INCH	SQ YD	124	108	16
44201013	CLASS B PATCHES, TYPE IV, 13 INCH	SQ YD	107	67	40
44201299	DOWEL BARS 1 1/2"	EACH	4560	2620	1940
44213200	SAW CUTS	FOOT	11657	6667	4990
44213204	TIE BARS 3/4"	EACH	58	44	14
67100100	MOBILIZATION	LSUM	1	0.75	0.25
70100450	TRAFFIC CONTROL AND PROTECTION, STANDARD	LSUM	1	0.75	0.25
	701201				
X7015005	CHANGEABLE MESSAGE SIGN	CAL DA	28	14	14