

URBAN

URBAN

SUMMARY OF QUANTITIES			CONSTRUCTION TYPE CODE			
CODE NO	ITEM	UNIT	TOTAL QUANTITIES	0005 ROADWAY 80% FED. 20% STATE	0021 TRAFFIC SIGNAL 80% FED. 10% STATE 5% CITY OF WARENGO 5% COUNTY	
25000210	SEEDING, CLASS 2A	ACRE	0.003	0.003		
25000400	NITROGEN FERTILIZER NUTRIENT	POUND	0.27	0.27		
25000500	PHOSPHORUS FERTILIZER NUTRIENT	POUND	0.27	0.27		
25000600	POTASSIUM FERTILIZER NUTRIENT	POUND	0.27	0.27		
25100630	EROSION CONTROL BLANKET	SO YD	14.3	14.3		
40600290	BITUMINOUS MATERIALS (TACK COAT)	POUND	3515	3515		
40600400	MIXTURE FOR CRACKS, JOINTS, AND FLANGEWAYS	TON	8	8		
40600625	LEVELING BINDER (MACHINE METHOD), N50	TON	210	210		
40600982	HOT-MIX ASPHALT SURFACE REMOVAL - BUTT JOINT	SO YD	62	62		
40603335	HOT-MIX ASPHALT SURFACE COURSE, MIX "D", N50	TON	442	442		
44000158	HOT-MIX ASPHALT SURFACE REMOVAL, 2 1/4"	SO YD	5210	5210		
44201863	CLASS D PATCHES, TYPE II, 18 INCH	SO YD	120	120		
44201869	CLASS D PATCHES, TYPE IV, 18 INCH	SO YD	60	60		
* W900200	NON-SPECIAL WASTE DISPOSAL	CU YD	30	30		
48102100	AGGREGATE WEDGE SHOULDER, TYPE B	TON	96	96		
* W900450	SPECIAL WASTE PLANS AND REPORTS	LSUM	1	1		
67000400	ENGINEER'S FIELD OFFICE, TYPE A	CAL MO	3	1	2	
* W900530	SOIL DISPOSAL ANALYSIS	CACH	1	1		
67100100	MOBILIZATION	LSUM	1	0.5	0.5	

SUMMARY OF QUANTITIES			CONSTRUCTION TYPE CODE			
CODE NO	ITEM	UNIT	TOTAL QUANTITIES	0005 ROADWAY 80% FED. 20% STATE	0021 TRAFFIC SIGNAL 80% FED. 10% STATE 5% CITY OF WARENGO 5% COUNTY	
70100460	TRAFFIC CONTROL AND PROTECTION, STANDARD 701306	LSUM	1	1		
70100600	TRAFFIC CONTROL AND PROTECTION, STANDARD 701336	LSUM	1	1		
70102620	TRAFFIC CONTROL AND PROTECTION, STANDARD 701501	LSUM	1	1		
70102622	TRAFFIC CONTROL AND PROTECTION, STANDARD 701502	LSUM	1	1		
70102635	TRAFFIC CONTROL AND PROTECTION, STANDARD 701701	LSUM	1	1		
70300100	SHORT TERM PAVEMENT MARKING	FOOT	1390	1390		
70300150	SHORT TERM PAVEMENT MARKING REMOVAL	SO FT	580	580		
70300210	TEMPORARY PAVEMENT MARKING LETTERS AND SYMBOLS	SO FT	145.6	145.6		
70300220	TEMPORARY PAVEMENT MARKING - LINE 4"	FOOT	5155	5155		
70300240	TEMPORARY PAVEMENT MARKING - LINE 6"	FOOT	545	545		
70300260	TEMPORARY PAVEMENT MARKING - LINE 12"	FOOT	50	50		
70300280	TEMPORARY PAVEMENT MARKING - LINE 24"	FOOT	88	88		
70300520	PAVEMENT MARKING TAPE, TYPE III 4"	FOOT	2880	2880		
70300570	PAVEMENT MARKING TAPE, TYPE III 24"	FOOT	88	88		
* 72000100	SIGN PANEL - TYPE 1	SO FT	13.5		13.5	
* 72000200	SIGN PANEL - TYPE 2	SO FT	40		40	

△ *
△ *
△ *
16

FILE NAME =	USER NAME = goren/paula	DESIGNED -	REVISED -
D:\VLO\B4E\BID\INT\EG\Int\goren\PI\DOT\Documents\DOT	Office\District\Projects\PI\ESS\INCAD\Design\PI\ESS	CHECKED -	REVISED -
	PLOT SCALE = 100,0000' / 1"	DATE -	REVISED -
	PLOT DATE = 5/9/2017		

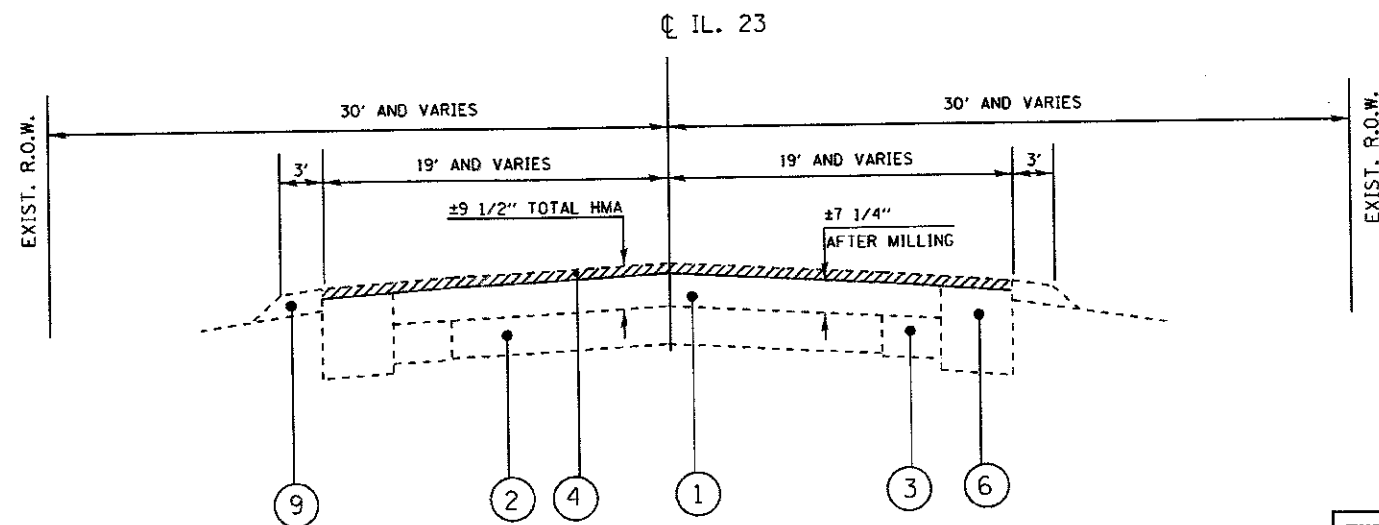
STATE OF ILLINOIS
DEPARTMENT OF TRANSPORTATION

SUMMARY OF QUANTITIES			
IL 23 AT CORAL RD / PLEASANT GROVE RD			
SCALE:	SHEET NO.	OF SHEETS	STA. TO STA.

F.A.P. RTE.	SECTION	COUNTY	TOTAL SHEETS	SHEET NO.
324	24N-2	MCHENRY	30	3
FED. ROAD DIST. NO. 1 (ILLINOIS) FED. AID PROJECT				
CONTRACT NO. 60V05				

* Specialty Item

△ REV 8-23-17



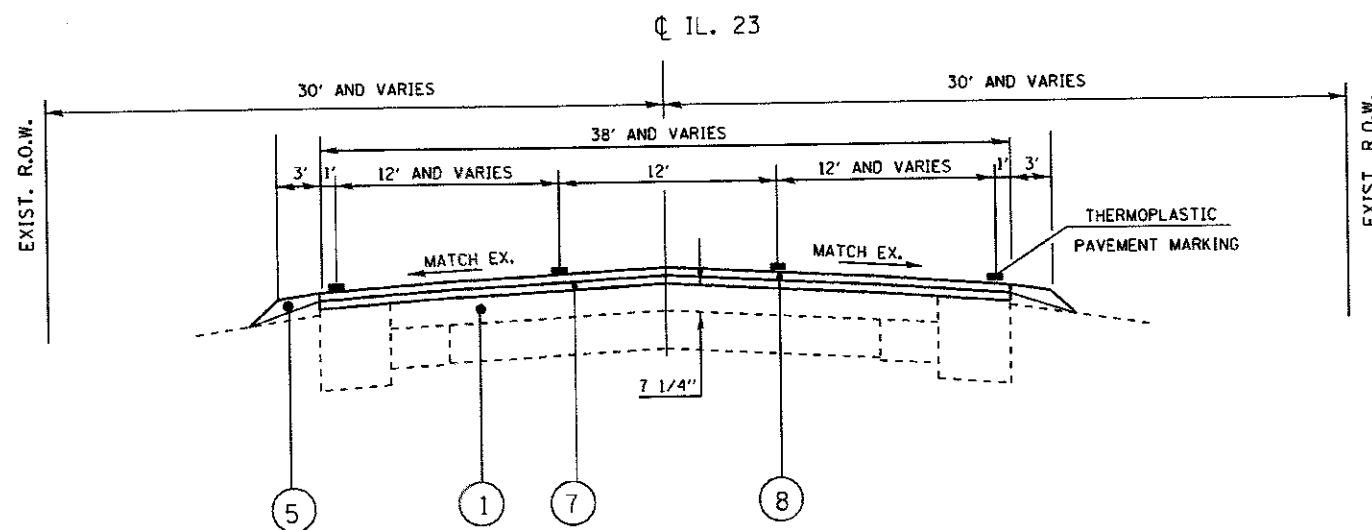
EXISTING TYPICAL SECTION

IL ROUTE 23
STA 495+01 TO STA 505+00

THE CONTRACTOR SHALL MILL FIRST BEFORE PATCHING

LEGEND

1. EXISTING HMA SURFACE ± 9 1/2"
2. EXISTING P.C.C. PAVEMENT ± 6 1/2"
3. EXISTING HMA BASE CSE WIDENING
4. PROPOSED HOT-MIX ASPHALT SURFACE REMOVAL 2 1/4"
5. PROPOSED AGGREGATE WEDGE SHOULDER TYPE B
6. EXISTING BASE COURSE
7. PROPOSED LEVELING BINDER (MACHINE METHOD), N50, 3/4"
8. PROPOSED HOT-MIX ASPHALT SURFACE COURSE, MIX "D", N50 (IL 9.5 mm) 1 1/2"
9. XISTING AGGREGATE SHOULDER



PROPOSED TYPICAL SECTION

IL ROUTE 23
STA 495+01 TO STA 505+00

HOT-MIX ASPHALT MIXTURE REQUIREMENTS		QUALITY MANAGEMENT
MIXTURE TYPE	AIR VOIDS AND NOTES	PROGRAM (OMP)
HOT-MIX ASPHALT SURFACE COURSE, MIX "D", N50 (IL 9.5 mm)	4% @ 50 Gyr.	QC /QA
LEVELING BINDER (MACHINE METHOD), N 50 (IL -9.5)	4% @ 50 Gyr.	QC /QA
PATCHING		
CLASS D PATCHES (HMA BINDER IL-19 mm)	4% @ 70 Gyr.	QC /QA
OMP Designation: Quality Control/Quality Assurance (QS/QA); Quality Control per Performance (QCP);		

NOTE:

THE UNIT WEIGHT USED TO CALCULATE ALL HMA SURFACE MIXTURE QUANTITIES IS 112 LBS/SQ. YD./ IN.

THE "AC TYPE" FOR POLYMERIZED HMA MIXES SHALL BE "SBS / SBR PG 76 -22" AND FOR NON-POLYMERIZED HMA THE "AC TYPE" SHALL BE "PG 64 -22" UNLESS MODIFIED BY DISTRICT ONE SPECIAL PROVISIONS.

FOR USE OF RECYCLED MATERIALS SEE SPECIAL PROVISIONS.

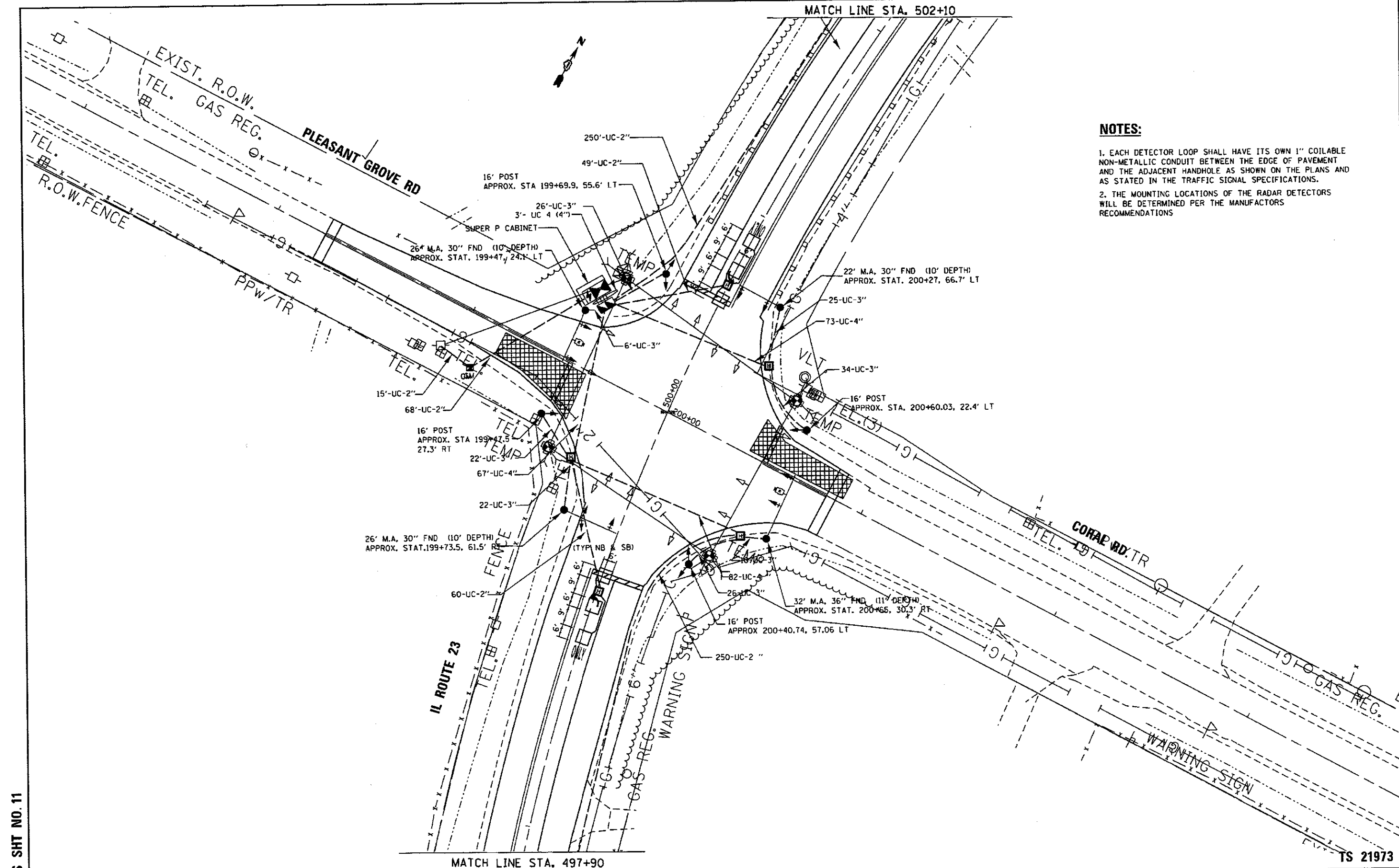
QUALITY MANAGEMENT PROGRAM (OMP) IDENTIFIES THE PARTICULAR QUANTITY CONTROL SPECIFICATION THAT APPLIES TO THE HMA.

FILE NAME =	USER NAME = gorengoutab	DESIGNED -	REVISED -	STATE OF ILLINOIS DEPARTMENT OF TRANSPORTATION	TYPICAL SECTION IL ROUTE 23 AT PLEASANT GROVE ROAD/CORAL ROAD				F.A.P. RTE.	SECTION	COUNTY	TOTAL SHEETS	SHEET NO.
per\IL004EBIDINTEG.illinois.gov\VIDOT\Documents\IDOT Offices\District 1\Projects\P1255\DR2017\Design\P125511-sh-typical.dgn		CHECKED -	REVISED -		324	24N-2	MCHEMRY	30	6				
Defaults	PLOT SCALE = 100.0000' / in.	DATE -	REVISED -		CONTRACT NO. 60V05				ILLINOIS FED. AID PROJECT				
	PLOT DATE = 8/18/2017				SCALE:	SHEET	OF	SHEETS	STA.	TO	STA.		

Revised Sheet 8-23-17

NOTES:

1. EACH DETECTOR LOOP SHALL HAVE ITS OWN 1" COILABLE NON-METALLIC CONDUIT BETWEEN THE EDGE OF PAVEMENT AND THE ADJACENT HANDHOLE AS SHOWN ON THE PLANS AND AS STATED IN THE TRAFFIC SIGNAL SPECIFICATIONS.
2. THE MOUNTING LOCATIONS OF THE RADAR DETECTORS WILL BE DETERMINED PER THE MANUFACTURERS RECOMMENDATIONS



TS SHT NO. 11

TS 21973

FILE NAME =	USER NAME = gorenoutab	DESIGNED - SS	REVISED - ZJ 3/17/2017
path: \\IL08468\INTEG\illinois.gov\PI\DOT\DO...ents\DDT_Offices\District 1\Projects\PI25028\Bsta\Traffic\PI25511-sh1-ta.dgn			REVISED -
PLOT SCALE = 48.0000' / in.	CHECKED -	REVISED -	REVISED -
PLOT DATE = 7/14/2017	DATE - 6/1/2016	REVISED -	

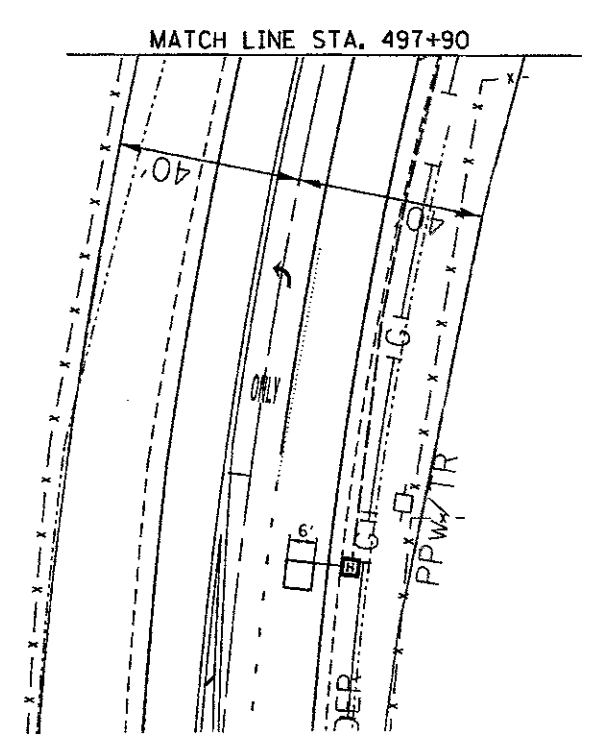
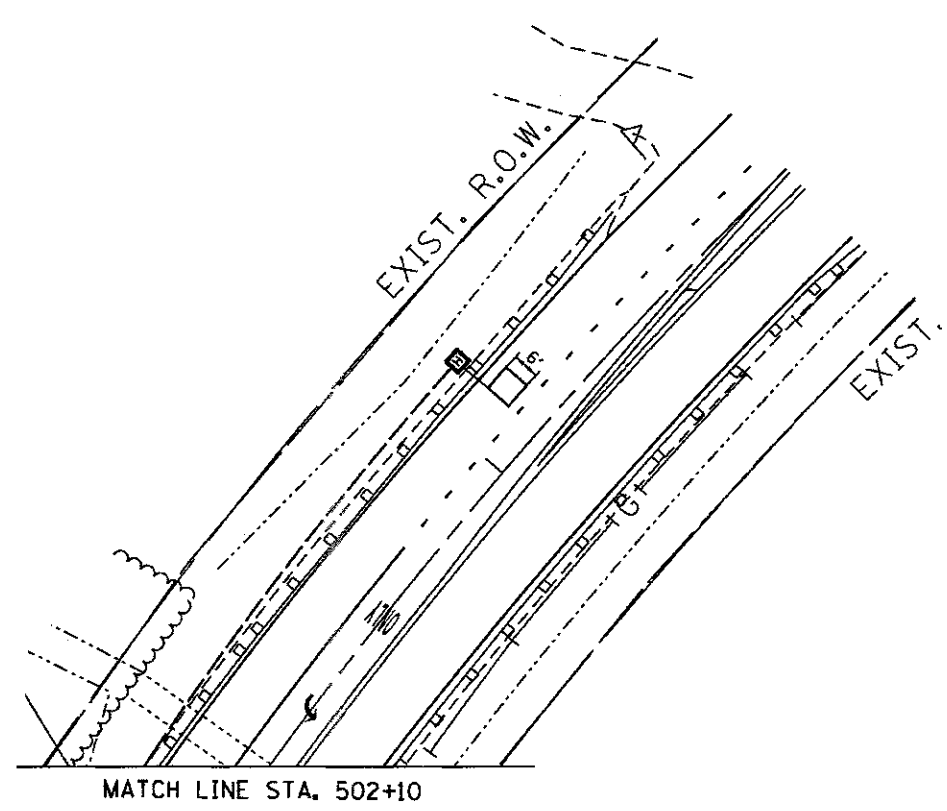
**STATE OF ILLINOIS
DEPARTMENT OF TRANSPORTATION**

**TRAFFIC SIGNAL MODERNIZATION PLAN
IL RTE 23 AT CORAL RD/PLEASANT GROVE RD (1 OF 2)**

SCALE: 1"=20' SHEET OF SHEETS STA. TO STA.

F.A.P. RTE.	SECTION	COUNTY	TOTAL SHEETS	SHEET NO.
324	24N-2	MCHENRY	30	19
ILLINOIS FED. AID PROJECT			CONTRACT NO. 60V05	

△ Revised Sheet 8-23-17



TS SHT NO. 12

TS 21973

FILE NAME =	USER NAME = gorengau tab	DESIGNED - SS	REVISED - ZJ 3/17/2017
per\\IL084EBID\INTEG\illinois.gov\PI\DOT\Documents\DOT Offices\District 1\Projects\PI25511-ht-ta.dgn			REVISED -
Default	PLOT SCALE = 48.0000 1/1 in.	CHECKED -	REVISED -
	PLOT DATE = 7/14/2017	DATE - 6/1/2016	REVISED -

STATE OF ILLINOIS
DEPARTMENT OF TRANSPORTATION

TRAFFIC SIGNAL MODERNIZATION PLAN			
IL RTE 23 AT CORAL RD/PLEASANT GROVE RD (2 OF 2)			
SCALE: 1"=20'	SHEET	OF	SHEETS
	STA.	TO	STA.

F.A.P. RTE.	SECTION	COUNTY	TOTAL SHEETS	SHEET NO.
324	24N-2	MCHENRY	30	20
ILLINOIS FED. AID PROJECT				
CONTRACT NO. 60Y05				

△ Revised Sheet 8-23-17