

MODEL: S00-01
 FILE NAME: p:\transystems\pw_bentley.com\transyscorp\pw_bentley.com\transystems\CAD\B2R27\Drawings\03-Schedule\03.2R27-SHT-S00.dgn

CODE NUMBER	PAY ITEM	UNIT	TOTAL QUANTITY	ROADWAY	ROADWAY	CULVERT	BRIDGE REHAB	BRIDGE REHAB	NOISE ABATEMENT WALLS ①	SAFETY	SAFETY	
				90% FED		90% FED	90% FED	90% FED	90% FED	90% FED	90% FED	
				10% STATE	100% STATE	10% STATE	10% STATE	10% STATE	10% STATE	10% STATE	100% STATE	
				URBAN								
				0003	0003	0004	0013	0013	0020	0021	0021	
				RURAL	RURAL	099-0760	099-0301	099-0302	RURAL	LIGHTING	LIGHTING	
* 20100110	TREE REMOVAL (6 TO 15 UNITS DIAMETER)	UNIT	580	580								
* 20100210	TREE REMOVAL (OVER 15 UNITS DIAMETER)	UNIT	481	481								
* 20100500	TREE REMOVAL, ACRES	ACRE	7.25	7.25								
20101000	TEMPORARY FENCE	FOOT	3,814	3,814								
* 20101100	TREE TRUNK PROTECTION	EACH	8	8								
* 20101200	TREE ROOT PRUNING	EACH	8	8								
* 20101300	TREE PRUNING (1 TO 10 INCH DIAMETER)	EACH	32	32								
* 20101350	TREE PRUNING (OVER 10 INCH DIAMETER)	EACH	63	63								
20200100	EARTH EXCAVATION	CU YD	114,135	114,135								
20200200	ROCK EXCAVATION	CU YD	205	5						200		
20201200	REMOVAL AND DISPOSAL OF UNSUITABLE MATERIAL	CU YD	12,582	12,582								
20400800	FURNISHED EXCAVATION	CU YD	65,380 15,410	65,380 15,410								
20700220	POROUS GRANULAR EMBANKMENT	CU YD	353			353						
20800150	TRENCH BACKFILL	CU YD	19,672.0	19,672.0								
21001000	GEOTECHNICAL FABRIC FOR GROUND STABILIZATION	SQ YD	35,644	35,153		491						
21101505	TOPSOIL EXCAVATION AND PLACEMENT	CU YD	37,435	37,435								
21101615	TOPSOIL FURNISH AND PLACE, 4"	SQ YD	39,477	39,477								
21101805	COMPOST FURNISH AND PLACE, 2"	SQ YD	1,349	1,349								
* 25000115	SEEDING, CLASS 1B	ACRE	1.25	1.25								
* 25000210	SEEDING, CLASS 2A	ACRE	12.50	12.50								
* 25000310	SEEDING, CLASS 4	ACRE	13.25	13.25								

* DENOTES SPECIALTY ITEM

① SN 099-N1009, SN 099-N1010, SN 099-N1011, SN 099-N1012, SN 099-N1013, SN 099-N1014 & SN 099-N1015

TRANSYSTEMS

USER NAME = amkluver	DESIGNED - VLJ	REVISED -
PLOT SCALE = 0.16666633 ' / in.	DRAWN - AMK	REVISED -
PLOT DATE = 8/18/2023	CHECKED - JMG	REVISED -
	DATE - 6/26/23	REVISED -

**STATE OF ILLINOIS
 DEPARTMENT OF TRANSPORTATION**

SUMMARY OF QUANTITIES

SCALE: NONE SHEET 1 OF 16 SHEETS STA. TO STA.

F.A.I. RTE.	SECTION	COUNTY	TOTAL SHEETS	SHEET NO.
I-80	FAI 80 21 STRUCTURE 6	WILL	898	5
CONTRACT NO. 62R27				
ILLINOIS FED. AID PROJECT				

① REVISED SHEET 9/5/2023

MODEL: S00-04
FILE NAME: p:\transys\transyscomp\pw1\hosted\Documents\Projects_2018\CH40118002202-TransSystems\CAD\2027\Sheets\03-Schedule\03E2R27-SHT-S00.dgn

CODE NUMBER	PAY ITEM	UNIT	TOTAL QUANTITY	ROADWAY	ROADWAY	CULVERT	BRIDGE REHAB	BRIDGE REHAB	NOISE ABATEMENT WALLS ①	SAFETY	SAFETY
				90% FED		90% FED	90% FED	90% FED	90% FED	90% FED	90% FED
				10% STATE	100% STATE	10% STATE	10% STATE	10% STATE	10% STATE	10% STATE	100% STATE
				0003	0003	0004	0013	0013	0020	0021	
			URBAN	RURAL	RURAL	099-0760	099-0301	099-0302	RURAL	LIGHTING	LIGHTING
50102400	CONCRETE REMOVAL	CU YD	130.5				65.3	65.2			
50104650	SLOPE WALL REMOVAL	SQ YD	252				127	125			
50104701	REMOVAL OF EXISTING CONCRETE DECK NO. 1	EACH	1				1				
50104702	REMOVAL OF EXISTING CONCRETE DECK NO. 2	EACH	1					1			
50157300	PROTECTIVE SHIELD	SQ YD	1,201				638	563			
50105220	PIPE CULVERT REMOVAL	FOOT	152	152							
50200100	STRUCTURE EXCAVATION	CU YD	3,345.6			2,646	350.2	349.4			
50200400	ROCK EXCAVATION FOR STRUCTURES	CU YD	115	107						8	
50200450	REMOVAL AND DISPOSAL OF UNSUITABLE MATERIAL FOR STRUCTURES	CU YD	203			203					
50300100	FLOOR DRAINS	EACH	4				2	2			
50300225	CONCRETE STRUCTURES	CU YD	166.7				79.6	87.1			
50300255	CONCRETE SUPERSTRUCTURE	CU YD	1,408.2	471.9			488.6	447.7			
50300300	PROTECTIVE COAT	SQ YD	3,902	357			1,797	1,748			
50301350	CONCRETE SUPERSTRUCTURE (APPROACH SLAB)	CU YD	390.4				195.2	195.2			
50500105	FURNISHING AND ERECTING STRUCTURAL STEEL	L SUM	1.0				0.5	0.5			
50500505	STUD SHEAR CONNECTORS	EACH	1,920				960	960			
50800105	REINFORCEMENT BARS	POUND	103,010			103,010					
50800205	REINFORCEMENT BARS, EPOXY COATED	POUND	456,170	111,040			174,600	170,530			
50800515	BAR SPLICERS	EACH	2,848 2,552			296	1,276 1,120	1,276 1,120			
50800530	MECHANICAL SPLICERS	EACH	48				24	24			
51100100	SLOPE WALL 4 INCH	SQ YD	222				111	111			

* DENOTES SPECIALTY ITEM

① SN 099-N1009, SN 099-N1010, SN 099-N1011, SN 099-N1012, SN 099-N1013, SN 099-N1014 & SN 099-N1015

TRANSYSTEMS

USER NAME = amkluver	DESIGNED - VLJ	REVISED -
PLOT SCALE = 0.16666633 ' / in.	DRAWN - AMK	REVISED -
PLOT DATE = 8/18/2023	CHECKED - JMG	REVISED -
	DATE - 6/26/23	REVISED -

**STATE OF ILLINOIS
DEPARTMENT OF TRANSPORTATION**

SUMMARY OF QUANTITIES

SCALE: NONE SHEET 4 OF 16 SHEETS STA. TO STA.

F.A.I. RTE.	SECTION	COUNTY	TOTAL SHEETS	SHEET NO.
I-80	FAI 80 21 STRUCTURE 6	WILL	898	8
CONTRACT NO. 62R27				
ILLINOIS FED. AID PROJECT				

① REVISED SHEET 9/5/2023

REV-SEP

MODEL: S00-08
 FILE NAME: p:\transystems\pw_bentley.com\transyscorp\pw1_hoisted\Documents\Projects_2018\CH401\401180022\02-TransSystems\CAD\62R27\Sheets\03-Schedule\03.62R27-SHT-S00.dgn

CODE NUMBER	PAY ITEM	UNIT	TOTAL QUANTITY	ROADWAY	ROADWAY	CULVERT	BRIDGE REHAB	BRIDGE REHAB	NOISE ABATEMENT WALLS ①	SAFETY	SAFETY
				90% FED	100% STATE	90% FED	90% FED	90% FED	90% FED	90% FED	90% FED
				10% STATE	100% STATE	10% STATE	10% STATE	10% STATE	10% STATE	10% STATE	100% STATE
				URBAN	0003	0003	0004	0013	0013	0020	0021
	RURAL	RURAL	099-0760	099-0301	099-0302	RURAL	LIGHTING	LIGHTING			
* 63100045	TRAFFIC BARRIER TERMINAL, TYPE 2	EACH	6	6							
* 63100070	TRAFFIC BARRIER TERMINAL, TYPE 5	EACH	2	2							
* 63100085	TRAFFIC BARRIER TERMINAL, TYPE 6	EACH	5	5							
* 63100167	TRAFFIC BARRIER TERMINAL, TYPE 1 (SPECIAL) TANGENT	EACH	8	8							
63200310	GUARDRAIL REMOVAL	FOOT	6,884	6,884							
63201100	HIGH TENSION CABLE MEDIAN BARRIER REMOVAL	FOOT	8,966	8,966							
63500105	DELINEATORS	EACH	89	89							
63700180	CONCRETE BARRIER, SINGLE FACE, 44 INCH HEIGHT	FOOT	1,050	1,050							
63700280	CONCRETE BARRIER, DOUBLE FACE, 44 INCH HEIGHT	FOOT	8,977	8,977							
63700380	CONCRETE BARRIER, VARIABLE CROSS SECTION 44 INCH HEIGHT	FOOT	781	781							
63700900	CONCRETE BARRIER BASE	FOOT	8,977	8,977							
63800920	MODULAR GLARE SCREEN SYSTEM, TEMPORARY	FOOT	700	700							
64200116	SHOULDER RUMBLE STRIPS, 16 INCH	FOOT	38,881	38,881							
64401300	HIGH TENSION CABLE MEDIAN BARRIER TERMINALS	EACH	3	3							
66400105	CHAIN LINK FENCE, 4'	FOOT	15,703	15,703							
66400705	CHAIN LINK GATES, 4' X 4' SINGLE	EACH	5	5							
67100100	MOBILIZATION	L SUM	1	1							
70103815	TRAFFIC CONTROL SURVEILLANCE	CAL DA	90	90							
70107025	CHANGEABLE MESSAGE SIGN	CAL DA	4,320	4,320							
70301100	TEMPORARY PAVEMENT MARKING LETTERS AND SYMBOLS - EPOXY	SQ FT	500	500							
70301120	TEMPORARY PAVEMENT MARKING - LINE 4" - EPOXY	FOOT	429,464	429,464							
66900200	NON-SPECIAL WASTE DISPOSAL	CU YD	66,460	66,460							
66900530	SOIL DISPOSAL ANALYSIS	EACH	6	6							
66901001	REGULATED SUBSTANCES PRE-CONSTRUCTION PLAN	L SUM	1	1							
66901003	REGULATED SUBSTANCES FINAL CONSTRUCTION REPORT	L SUM	1	1							
66901005	ENGINEERED BARRIER	SQ YD	3,285	3,285							
66901006	REGULATED SUBSTANCES MONITORING	CAL DA	300	300							

* DENOTES SPECIALTY ITEM

① SN 099-N1009, SN 099-N1010, SN 099-N1011, SN 099-N1012, SN 099-N1013, SN 099-N1014 & SN 099-N1015

TRANSYSTEMS

USER NAME = amkluver	DESIGNED - VLJ	REVISED -
PLOT SCALE = 0.16666633 ' / in.	DRAWN - AMK	REVISED -
PLOT DATE = 8/18/2023	CHECKED - JMG	REVISED -
	DATE - 6/26/23	REVISED -

**STATE OF ILLINOIS
DEPARTMENT OF TRANSPORTATION**

SUMMARY OF QUANTITIES

SCALE: NONE SHEET 8 OF 16 SHEETS STA. TO STA.

F.A.I. RTE.	SECTION	COUNTY	TOTAL SHEETS	SHEET NO.
I-80	FAI 80 21 STRUCTURE 6	WILL	898	12
CONTRACT NO. 62R27			ILLINOIS FED. AID PROJECT	

① REVISED SHEET 9/5/2023

MODEL: S00-00
 FILE NAME: p:\transystems\pw_bentley.com\transyscorp\pw1_hoisted\Documents\Projects_2018\CH40140118002202-TransSystems\CAD\2022\Drawings\03-Schedule\01E2R27-SHT-S00.dgn

CODE NUMBER	PAY ITEM	UNIT	TOTAL QUANTITY	ROADWAY	ROADWAY	CULVERT	BRIDGE REHAB	BRIDGE REHAB	NOISE ABATEMENT WALLS ①	SAFETY	SAFETY
				90% FED		90% FED	90% FED	90% FED	90% FED	90% FED	90% FED
				10% STATE	100% STATE	10% STATE	10% STATE	10% STATE	10% STATE	10% STATE	100% STATE
				URBAN							
				0003	0003	0004	0013	0013	0020	0021	0021
				RURAL	RURAL	099-0760	099-0301	099-0302	RURAL	LIGHTING	LIGHTING
70301125	TEMPORARY PAVEMENT MARKING - LINE 5" - EPOXY	FOOT	44,417	44,417							
70301130	TEMPORARY PAVEMENT MARKING - LINE 6" - EPOXY	FOOT	46,313	46,313							
70301140	TEMPORARY PAVEMENT MARKING - LINE 8" - EPOXY	FOOT	70,379	70,379							
70301160	TEMPORARY PAVEMENT MARKING - LINE 12" - EPOXY	FOOT	4,813	4,813							
70400100	TEMPORARY CONCRETE BARRIER	FOOT	46,312.5	46,312.5							
70400125	PINNING TEMPORARY CONCRETE BARRIER	EACH	13,347	13,347							
70400200	RELOCATE TEMPORARY CONCRETE BARRIER	FOOT	128,687.5	128,687.5							
70600280	IMPACT ATTENUATORS, TEMPORARY (SEVERE USE,NARROW), TEST LEVEL 3	EACH	15	15							
70600290	IMPACT ATTENUATORS, TEMPORARY (SEVERE USE,WIDE), TEST LEVEL 3	EACH	2	2							
70600360	IMPACT ATTENUATORS, RELOCATE (SEVERE USE), TEST LEVEL 3	EACH	2	2							
70600370	IMPACT ATTENUATORS, RELOCATE (SEVERE USE, NARROW), TEST LEVEL 3	EACH	61	61							
* 72000100	SIGN PANEL - TYPE 1	SQ FT	91	91							
* 72000200	SIGN PANEL - TYPE 2	SQ FT	364	364							
* 72000300	SIGN PANEL - TYPE 3	SQ FT	3,737 3,713	3,737 3,713							
* 72400310	REMOVE SIGN PANEL - TYPE 1	SQ FT	76	76							
* 72400320	REMOVE SIGN PANEL - TYPE 2	SQ FT	170	170							
* 72400330	REMOVE SIGN PANEL - TYPE 3	SQ FT	1,709	1,709							
* 72400500	RELOCATE SIGN PANEL ASSEMBLY - TYPE A	EACH	2	2							
* 72400710	RELOCATE SIGN PANEL - TYPE 1	SQ FT	33	33							
* 72400730	RELOCATE SIGN PANEL - TYPE 3	SQ FT	300	300							
* 72501000	TERMINAL MARKER - DIRECT APPLIED	EACH	8	8							

* DENOTES SPECIALTY ITEM

① SN 099-N1009, SN 099-N1010, SN 099-N1011, SN 099-N1012, SN 099-N1013, SN 099-N1014 & SN 099-N1015

TRANSYSTEMS

USER NAME = amkluver	DESIGNED - VLJ	REVISED -
PLOT SCALE = 0.16666633 ' / in.	DRAWN - AMK	REVISED -
PLOT DATE = 8/18/2023	CHECKED - JMG	REVISED -
	DATE - 6/26/23	REVISED -

**STATE OF ILLINOIS
DEPARTMENT OF TRANSPORTATION**

SUMMARY OF QUANTITIES

SCALE: NONE SHEET 9 OF 16 SHEETS STA. TO STA.

F.A.I. RTE.	SECTION	COUNTY	TOTAL SHEETS	SHEET NO.
I-80	FAI 80 21 STRUCTURE 6	WILL	898	13
			CONTRACT NO. 62R27	
		ILLINOIS	FED. AID PROJECT	

① REVISED SHEET 9/5/2023

MODEL: S00-10
 FILE NAME: p:\transystems\pw_bentley.com\transyscorp\pw1_hobbed\Documents\Projects_2018\CH40140118002702-TransSystems\CAD\62827\Sheets\03-Schedule\0162827-SHT-S00.dgn

CODE NUMBER	PAY ITEM	UNIT	TOTAL QUANTITY	ROADWAY	ROADWAY	CULVERT	BRIDGE REHAB	BRIDGE REHAB	NOISE ABATEMENT WALLS ①	SAFETY	SAFETY
				90% FED	100% STATE	90% FED	90% FED	90% FED	90% FED	90% FED	90% FED
				10% STATE	100% STATE	10% STATE	10% STATE	10% STATE	10% STATE	10% STATE	100% STATE
				URBAN	0003	0003	0004	0013	0013	0020	0021
				RURAL	RURAL	099-0760	099-0301	099-0302	RURAL	LIGHTING	LIGHTING
* 72600100	MILE POST MARKER ASSEMBLY	EACH	8	8							
* 72700100	STRUCTURAL STEEL SIGN SUPPORT - BREAKAWAY	POUND	20,706 20,580	20,706 20,580							
* 72800100	TELESCOPING STEEL SIGN SUPPORT	FOOT	226	226							
* 73000100	WOOD SIGN SUPPORT	FOOT	613	613							
* 73300100	OVERHEAD SIGN STRUCTURE - SPAN, TYPE I-A (4'-0" X 4'-6")	FOOT	83	83							
* 73300200	OVERHEAD SIGN STRUCTURE - SPAN, TYPE II-A (4'-6" X 5'-3")	FOOT	88	88							
* 73300300	OVERHEAD SIGN STRUCTURE - SPAN, TYPE III-A (5'-0" X 7'-0")	FOOT	85	85							
* 73301810	OVERHEAD SIGN STRUCTURE WALKWAY, TYPE A	FOOT	52	52							
* 73302210	OVERHEAD SIGN STRUCTURE - CANTILEVER, TYPE III-C-A (36" X 7'-0")	FOOT	65	65							
* 73400100	CONCRETE FOUNDATIONS	CU YD	53	53							
* 73400200	DRILLED SHAFT CONCRETE FOUNDATIONS	CU YD	104	104							
* 73500010	REMOVE OVERHEAD SIGN STRUCTURE - CANTILEVER	EACH	1	1							
* 73600100	REMOVE OVERHEAD SIGN STRUCTURE - SPAN	EACH	3	3							
* 73700100	REMOVE GROUND MOUNTED SIGN SUPPORT	EACH	42	42							
* 73700200	REMOVE CONCRETE FOUNDATION - GROUND MOUNT	EACH	42	42							
* 73700300	REMOVE CONCRETE FOUNDATION - OVERHEAD	EACH	9	9							
* 78004630	PREFORMED PLASTIC PAVEMENT MARKING, TYPE D - STANDARD - LINE 6"	FOOT	14,199	14,199							
* 78004635	PREFORMED PLASTIC PAVEMENT MARKING, TYPE D - STANDARD - LINE 7"	FOOT	818	818							
* 78004640	PREFORMED PLASTIC PAVEMENT MARKING, TYPE D - STANDARD - LINE 8"	FOOT	10,384	10,384							
* 78004645	PREFORMED PLASTIC PAVEMENT MARKING, TYPE D - STANDARD - LINE 9"	FOOT	5,460	5,460							
* 78004655	PREFORMED PLASTIC PAVEMENT MARKING, TYPE D - STANDARD - LINE 11"	FOOT	831	831							

* DENOTES SPECIALTY ITEM

① SN 099-N1009, SN 099-N1010, SN 099-N1011, SN 099-N1012, SN 099-N1013, SN 099-N1014 & SN 099-N1015

TRANSYSTEMS

USER NAME = amkluver	DESIGNED - VLJ	REVISED -
PLOT SCALE = 0.16666633 1/ in.	DRAWN - AMK	REVISED -
PLOT DATE = 8/18/2023	CHECKED - JMG	REVISED -
	DATE - 6/26/23	REVISED -

**STATE OF ILLINOIS
 DEPARTMENT OF TRANSPORTATION**

SUMMARY OF QUANTITIES

SCALE: NONE SHEET 10 OF 16 SHEETS STA. TO STA.

F.A.I. RTE.	SECTION	COUNTY	TOTAL SHEETS	SHEET NO.
I-80	FAI 80 21 STRUCTURE 6	WILL	898	14
			CONTRACT NO. 62R27	
ILLINOIS FED. AID PROJECT				

① REVISED SHEET 9/5/2023

EARTHWORK SCHEDULE

EARTHWORK SUMMARY OF QUANTITIES													
PROJECT AREA	EARTH EXCAVATION CU YD	EARTH EXCAVATION (ADJUSTED 15% FOR SHRINKAGE) (SEE NOTE 1) CU YD	ROCK EXCAVATION (SEE NOTE 7)	EMBANKMENT (SEE NOTE 1) CU YD	EARTHWORK BALANCE WASTE (+), SHORTAGE (-) (SEE NOTE 1) CU YD	NON-SPECIAL WASTE DISPOSAL (SEE NOTE 10) CU YD	FURNISHED EXCAVATION CU YD	TOPSOIL EXCAVATION AND PLACEMENT (SEE NOTE 2) CU YD	TOPSOIL PLACEMENT (SEE NOTE 1) CU YD	TOPSOIL BALANCE WASTE (+) OR SHORTAGE (-) (SEE NOTE 1 & 5) CU YD	TOPSOIL FURNISH AND PLACE, (4") SY	AGGREGATE SUBGRADE IMPROVEMENT CU YD	REMOVAL AND DISPOSAL OF UNSUITABLE MATERIAL CU YD (UNDERCUT)
PRE-STAGE	6,818	5,795		19,876	-14,081		14,081	8,536	0	8,536	0		
STAGE 1 - MAINLINE	19,658	16,709		18,036	-1,327		1,327	15,807	0	15,807	0		
STAGE 2 - MAINLINE	77,497	65,872	205	8,523	57,349		0	13,092	17,478	-4,386	39,476		
STAGE 2 - RAMP A HOUBOLT RD INTERCHANGE	4,341	3,690		292	3,398		0						
STAGE 2 - RAMP B HOUBOLT RD INTERCHANGE	1,011	859		93	766		0						
STAGE 2 - RAMP C HOUBOLT RD INTERCHANGE	454	386		32	354		0						
STAGE 2 - RAMP D HOUBOLT RD INTERCHANGE	1,223	1,040		917	123		0						
STAGE 3 - RAMP B HOUBOLT RD INTERCHANGE	1,757	1,493		669	824		0						
STAGE 3 - RAMP C HOUBOLT RD INTERCHANGE	1,372	1,166		14	1,152		0						
UNDERCUT												3,671	3,671
NON-REUSABLE NON-SPECIAL WASTE DISPOSAL (SEE NOTE 9)							49,970						
ALLOWANCE FOR OTHER UNDERCUT AREAS - 25% OF TOTAL												8,911	8,911
TOTALS	114,131	97,011	205	48,452	48,559	66,460	65,378	37,434	17,478	19,956	39,476	12,582	12,582
ROUNDED TOTALS	114,135	97,015	205	48,455	48,560	66,460	65,380	37,435	17,478	19,957	39,477	12,582	12,582

NOTES

- NOT A PAY ITEM
- "TOPSOIL EXCAVATION AND PLACEMENT" WILL BE MEASURED FOR PAYMENT BASED ON THE TOTAL VOLUME OF TOPSOIL EXCAVATED. THE CONTRACTOR SHALL REMOVE AND PROPERLY DISPOSE OF WASTE TOPSOIL FROM THE PROJECT SITE. THE COST TO REMOVE AND DISPOSE OF THIS MATERIAL SHALL BE INCLUDED IN THE BID UNIT PRICE PER CUBIC YARD FOR "TOPSOIL EXCAVATION AND PLACEMENT".
- TOPSOIL BALANCE VALUES ARE INCLUDED FOR INFORMATION PURPOSES ONLY.
- TOPSOIL IS ASSUMED TO HAVE 0% SHRINKAGE AFTER BEING EXCAVATED
- ASSUMED NO TOPSOIL SHOULD BE PLACED FOR INTERIM GRADING DURING PRE-STAGE CONSTRUCTION
- EXISTING DETENTION BASINS AT HOUBOLT ROAD INTERCHANGE SHALL NOT BE USED AS EARTHWORK STOCKPILING SITES.
- ROCK EXCAVATION INCLUDED HERE IS FOR EXCAVATION ASSOCIATED WITH ROADWAY WORK. QUANTITY IS ESTIMATED BASED ON INCLUDED BORING LOGS.
- TOPSOIL QUANTITIES WERE MEASURED CONTRACT WIDE AND NOT BROKEN UP BY RAMP SECTIONS
- A QUANTITY OF 49,970 CY WAS ADDED TO THE FURNISHED EXCAVATION QUANTITY. THIS ACCOUNTS FOR THE SOILS CLASSIFIED ACCORDING TO ARTICLE 669.05(a)(5) IN THE PSI REPORT. IF TESTING DETERMINES THAT SOME OF THE NON-SPECIAL WASTE MATERIAL CAN BE REUSED ON SITE AS EMBANKMENT, THE EXCESS FURNISHED EXCAVATION SHALL BE DEDUCTED AND NO ADDITIONAL COMPENSATION WILL BE DUE TO THE CONTRACTOR. THE CONTRACTOR SHALL OBTAIN THE APPROVAL OF THE ENGINEER PRIOR TO PLACING FURNISHED EXCAVATION.
- NON-SPECIAL WASTE DISPOSAL QUANTITY PROVIDED FROM PSI REPORT. SEE SPECIAL PROVISION FOR REMOVAL AND DISPOSAL OF REGULATED SUBSTANCES FOR DETAILS.

MODEL: I:\MODEL\NAMES
FILE NAME: SHEET

TRANSYSTEMS

USER NAME = \$USERS	DESIGNED - VLJ	REVISED - 1 08/29/23
PLOT SCALE = \$SCALE\$	DRAWN - AMK	REVISED -
PLOT DATE = \$DATES	CHECKED - JMG	REVISED -
	DATE - 6/26/23	REVISED -

**STATE OF ILLINOIS
DEPARTMENT OF TRANSPORTATION**

SCHEDULE OF QUANTITIES

SCALE: NONE SHEET 3 OF 3 SHEETS STA. TO STA.

F.A.I. RTE.	SECTION	COUNTY	TOTAL SHEETS	SHEET NO.
I-80	FAI 80 21 STRUCTURE 6	WILL	898	34
			CONTRACT NO. 62R27	
ILLINOIS FED. AID PROJECT				

1 REVISED SHEET 9/5/2023

PROPOSED SIGNING SCHEDULE											SIGN PANEL T1	SIGN PANEL T2	SIGN PANEL T3	MILE POST MARKER ASSEMBLY	STR STL SIGN SUP BA	CONC FND	TELESCOPING STL SIGN SUPPORT			WOOD SIGN SUPPORT			TRANSFER SERVICE SIGN
SIGN ID	STRUCTURE ID	LEGEND/DESCRIPTION	COLOR	MOUNTING TYPE	ALIGNMENT/DIRECTION	STATION	OFFSET	W (IN)	H (IN)	AREA (SQ FT)	(SQ FT)	(SQ FT)	(SQ FT)	(EACH)	(POUND)	(CU YD)	P1 (L.F.)	P2 (L.F.)	PAY LENGTH (L.F.)	P1 (L.F.)	P2 (L.F.)	PAY LENGTH (L.F.)	(EACH)
4120		CRASH INVESTIGATION SITE \ 1/2 MILE	WHITE/BLUE	WOOD POST	I-80 EB	412+37	83' RT	48	60	20		20								12	28	40	
4140		RIVERBOAT CASINO \ EXIT 127	WHITE/BROWN	BREAKAWAY STEEL	I-80 EB	414+15	89.5' RT	192	90	120		120			912	2.4							
4141A		R2-I109 TRUCK OVER 4 TONS	BLACK/WHITE	WOOD POST	I-80 WB	414+50	83' LT	48	30	10		10								6	16.5	22.5	
4141B		R2-1 SPEED LIMIT 60	BLACK/WHITE		I-80 WB	414+50	83' LT	48	60	20		20											
4170		FOOD - EXIT 127	WHITE/BLUE	BREAKAWAY STEEL	I-80 EB	417+18	91.5' RT	240	120	200		200			1929	4.2							6
4190A		R2-1 SPEED LIMIT 65	BLACK/WHITE	WOOD POST	I-80 WB	419+77	84' LT	48	60	20		20								6	17	23	
4190B		R2-I102 MINIMUM 45	BLACK/WHITE		I-80 WB	419+77	84' LT	48	36	12		12											
4230		W4-2 RIGHT LANE ENDS	BLACK/YELLOW	WOOD POST	I-80 WB	423+32	84' LT	48	48	16		16								6	26	32	
4231		GAS - EXIT 127	WHITE/BLUE	BREAKAWAY STEEL	I-80 EB	423+51	97' RT	180	120	150		150			1168	4.2							6
4240		MILE MARKER 127.5	WHITE/GREEN	MILE POST	I-80 EB	424+15	82' RT	12	60	5				1									
4241		MILE MARKER 127.5	WHITE/GREEN	MILE POST	I-80 WB	424+15	93.5' LT	12	60	5				1									
4271A		M3-4 WEST	WHITE/BLUE	LIGHT POLE	I-80 WB	427+90	93' LT	36	18	4.5	4.5												
4271B		M1-1 INTERSTATE 80	WHITE/BLUE		I-80 WB	427+90	93' LT	36	36	9	9												
4280		CRASH INVESTIGATION SITE	WHITE/BLUE	LGHT POLE	RAMP D EB	428+38	93' RT	48	60	20		20								12	28	40	
4290	1S099I080R127.6	EXIT 127	WHITE/GREEN	OVERHEAD SPAN	I-80 EB	429+00	40' RT	132	30	27.5			28										
		EAST INDIANA \ HOUBOLT RD EXIT ONLY	WHITE/GREEN	OVERHEAD SPAN	I-80 EB	429+00	40' RT	552	168	644			644										
4291		W13-2 EXIT \ 30 MPH	BLACK/YELLOW	LIGHTPOLE	I-80 EB	429+00	81' RT	36	48	12		12											
4342		W4-3 ADDED LANE	BLACK/YELLOW	WOOD POST	I-80 WB	434+31	71' LT	48	48	16		16								6	13	19	
4351	1C099I080L127.7	EXIT 126A-B \ CHICAGO ST LOUIS 1 1/2 MILE	WHITE/GREEN	OVERHEAD CANTILEVER	I-80 WB	435+00	44' LT	186	174	224.75			225										
4352		GORE SIGN EXIT 127	WHITE/GREEN	WOOD POST	I-80 EB	435+97	65.6' RT	96	60	40		40								12	28	40	
D1031		LODGING SERVICE SIGN	WHITE/BLUE	BREAKAWAY STEEL	RAMP D EB	103+80	37' RT	150	96	100		100			696	1.40							5
D1060		FOOD SERVICE SIGN	WHITE/BLUE	BREAKAWAY STEEL	RAMP D EB	106+80	54' RT	150	96	100		100			701	1.40							5
D1080		CRASH INVESTIGATION SITE \ M6-1 DIRECTIONAL ARROW	WHITE/BLUE	WOOD POST	RAMP D EB	108+18	52' RT	48	60	20		20								12	28	40	
D1081		R5-1a WRONG WAY	WHITE/BLUE	WOOD POST	RAMP D EB	108+25	54' RT	36	24	6	6						6	22	28				
D1083		STAY WITH YOUR VEHICLE	WHITE/BLUE	TELESCOPING STEEL	RAMP D EB	108+70	81' RT	24	30	5	5						6	23	29				
D1092A		CRASH INVESTIGATION SITE - SITE INFORMATION	WHITE/BLUE	LIGHT POLE	RAMP D EB	109+25	86' RT	48	72	24		24											
D1092B		STAY WITH YOUR VEHICLE	WHITE/BLUE		RAMP D EB	109+25	86' RT	24	30	5	5												
D1093		STAY WITH YOUR VEHICLE	WHITE/BLUE	TELESCOPING STEEL	RAMP D EB	109+76	81' RT	24	30	5	5						6	11.5	17.5				
D1101		GAS SERVICE SIGN	WHITE/BLUE	BREAKAWAY STEEL	RAMP D EB	110+80	50' RT	150	96	100		100			659	1.40							2
4502		MILE MARKER 128.0	WHITE/GREEN	MILE POST	I-80 EB	450+45	68' RT	12	60	5				1									
4503		MILE MARKER 128.0	WHITE/GREEN	MILE POST	I-80 WB	450+49	68' LT	12	60	5				1									
B3020		LODGING SERVICE SIGN	WHITE/BLUE	BREAKAWAY STEEL	RAMP B WB	302+30	26' RT	150	96	100		100			624	4.19							4
B3071		FOOD SERVICE SIGN	WHITE/BLUE	BREAKAWAY STEEL	RAMP B WB	307+57	29' RT	150	96	100		100			889	2.36							6
B3080		CRASH INVESTIGATION SITE \ M6-1 DIRECTIONAL ARROW	WHITE/BLUE	WOOD POST	RAMP B WB	308+05	39' LT	48	60	20		20								12	28	40	
B3081		R5-1a WRONG WAY	WHITE/RED	TELESCOPING STEEL	RAMP B WB	308+41	30' RT	42	30	8.75	8.75						6	23	29				
B3082		STAY WITH YOUR VEHICLE	WHITE/BLUE	TELESCOPING STEEL	RAMP B WB	308+89	69' LT	24	30	5	5						6	11.5	17.5				
B3091A		CRASH INVESTIGATION SITE - SITE INFORMATION	WHITE/BLUE	LIGHT POLE	RAMP B WB	309+33	69' LT	48	72	24		24											
B3091B		STAY WITH YOUR VEHICLE	WHITE/BLUE		RAMP B WB	309+33	69' LT	24	30	5	5												
B3092		STAY WITH YOUR VEHICLE	WHITE/BLUE	TELESCOPING STEEL	RAMP B WB	309+76	69' LT	24	30	5	5						6	11.5	17.5				
4540		W4-3 ADDED LANE	BLACK/YELLOW	WOOD POST	I-80 EB	454+27	69' RT	48	48	16		16								6	13	19	

MODEL: 4400ELMAMES
FILE NAME: STELEP



USER NAME = \$USERS
DESIGNED - JLS
DRAWN - JLS
PLOT SCALE = \$SCALE\$
CHECKED - AB
PLOT DATE = \$DATES
DATE - 6/26/23

REVISED - 08/29/23
REVISED -
REVISED -
REVISED -

REVISED - 08/29/23
REVISED -
REVISED -
REVISED -

STATE OF ILLINOIS
DEPARTMENT OF TRANSPORTATION

PROPOSED SIGNING SCHEDULE

SCALE: NONE SHEET 4 OF 5 SHEETS STA. TO STA.

REVISED SHEET 9/5/2023
F.A.I. RTE. SECTION COUNTY TOTAL SHEETS SHEET NO.
I-80 FAI 80 21 STRUCTURE 6 WILL 898 321
CONTRACT NO. 62R27
ILLINOIS FED. AID PROJECT

PROPOSED SIGNING SCHEDULE											SIGN PANEL T1	SIGN PANEL T2	SIGN PANEL T3	MILE POST MARKER ASSEMBLY	STR STL SIGN SUP BA	CONC FND	TELESCOPING STL SIGN SUPPORT			WOOD SIGN SUPPORT			TRANSFER SERVICE SIGN	
SIGN ID	STRUCTURE ID	LEGEND/DESCRIPTION	COLOR	MOUNTING TYPE	ALIGNMENT/DIRECTION	STATION	OFFSET	W (IN)	H (IN)	AREA (SQ FT)	(SQ FT)	(SQ FT)	(SQ FT)	(EACH)	(POUND)	(CU YD)	P1 (L.F.)	P2 (L.F.)	PAY LENGTH (L.F.)	P1 (L.F.)	P2 (L.F.)	PAY LENGTH (L.F.)	(EACH)	
4541		GORE SIGN EXIT 127	WHITE/GREEN	WOOD POST	I-80 WB	454+34	70' LT	96	60	40			40							12	28	40		
4590	1S099I080L128.2	EXIT 127 \ HOUBOLT RD \ EXIT ONLY	WHITE / GREEN	OVERHEAD SPAN	I-80 WB	459+72	54' LT	174	114	137.75			138											
4591		EXIT 126A-B \ CHICAGO \ ST LOUIS \ 2 MILES	WHITE / GREEN		I-80 WB	459+72	37.5' LT	186	174	224.75			225											
4592		I-80 WEST \ IOWA	WHITE / GREEN		I-80 WB	459+72	19.5' LT	138	96	92			92											
4610		W13-2 EXIT \ 30 MPH	BLACK/YELLOW	LIGHTPOLE	I-80 WB	461+80	75' LT	36	48	12		12												
4630A		M3-2 EAST	WHITE/BLUE	WOOD POST	I-80 EB	463+34	77' RT	36	18	4.5	4.5									6	13.1	19.1		
4630B		M1-1 INTERSTATE 80	WHITE/BLUE		I-80 EB	463+34	77' RT	36	36	9	9													
4631		CRASH INVESTIGATION SITE \ DIRECTIONAL ARROW	WHITE/BLUE	WOOD POST	I-80 WB	463+96	77' LT	48	60	20		20								12	28	40		
4671		W4-2 RIGHT LANE ENDS	BLACK/YELLOW	WOOD POST	I-80 EB	467+07	77' RT	48	48	16		16								6	13	19		
4681		EXIT 130 \ IL RTE 7 \ LARKIN AVE \ 2 MILES	WHITE/GREEN	BREAKAWAY STEEL	I-80 EB	468+02	99.4' RT	174	150	181.25			181		1445	3.8								
4710A		R2-1 SPEED LIMIT 65	BLACK/WHITE	WOOD POST	I-80 EB	471+78	77' RT	48	60	20		20								6	34	40		
4710B		R2-1102 MINIMUM 45	BLACK/WHITE		I-80 EB	471+78	77' RT	48	36	12		12												
4721		RIVERBOAT CASINO \ EXIT 127	WHITE/BROWN	BREAKAWAY STEEL	I-80 WB	472+17	83' LT	192	90	120			120		917	3.8								
4750	1C099I080L128.5	EXIT 127 \ HOUBOLT RD \ EXIT ONLY	WHITE/GREEN	OVERHEAD CANTILEVER	I-80 WB	475+25	54' LT	174	114	137.75			138											
4752A		R2-1109 TRUCK OVER 4 TONS	BLACK/WHITE	WOOD POST	I-80 EB	475+46	71' RT	48	30	10		10								6	16.5	22.5		
4752B		R2-1 SPEED LIMIT 60	BLACK/WHITE		I-80 EB	475+46	71' RT	48	60	20		20												
4761		MILE MARKER 128.5	WHITE/GREEN	MILE POST	I-80 EB	476+85	69' RT	12	60	5	5			1										
4762		MILE MARKER 128.5	WHITE/GREEN	MILE POST	I-80 WB	476+89	69' LT	12	60	5	5			1										
4810		CRASH INVESTIGATION SITE \ 1/2 MILE	WHITE/BLUE	WOOD POST	I-80 WB	481+20	72' LT	48	60	20		20								12	28	40		
4830		R8-4 EMERGENCY PARKING ONLY	BLACK/WHITE	WOOD POST	I-80 WB	483+70	70' LT	48	36	12		12								6	12	18		
4861		EXIT 127 \ HOUBOLT RD \ 1/2 MILE	WHITE/GREEN	BREAKAWAY STEEL	I-80 WB	486+09	92' LT	174	102	123.25			123		1070	2.5								
4862		SHARE THE DRIVE \ 800-920-RIDE	WHITE/BLUE	BREAKAWAY STEEL	I-80 EB	486+64	80' RT	126	60	52.5			53		693	1.4								
4911		*999 EXPRESS LINE (ROADSIDE ASSISTANCE)	BLACK/WHITE	WOOD POST	I-80 EB	491+79	70' RT	36	36	9	9									6	12	18		
4940		GAS - EXIT 127	WHITE/BLUE	BREAKAWAY STEEL	I-80 WB	494+09	76' LT	180	120	150			150		1938	4.2							6	
4991		LODGING - EXIT 130	WHITE/BLUE	BREAKAWAY STEEL	I-80 EB	499+71	78' RT	240	120	200			200		1824	4.2							6	
5032		MILE MARKER 129.0	WHITE/GREEN	MILE POST	I-80 EB	503+25	69' RT	12	60	5				1										
5033		MILE MARKER 129.0	WHITE/GREEN	MILE POST	I-80 WB	503+29	69' LT	12	60	5				1										
5040		CRASH INVESTIGATION SITE \ 1 MILE	WHITE/BLUE	WOOD POST	I-80 WB	504+72	71' LT	48	60	20		20								12	28	40		
5110		FOOD - EXIT 130	WHITE/BLUE	BREAKAWAY STEEL	I-80 EB	511+91	78' RT	240	120	200			200		1849	4.2							6	
5120		EXIT 127 \ HOUBOLT RD \ 1 MILE	WHITE/GREEN	BREAKAWAY STEEL	I-80 WB	512+50	77' LT	174	102	123.25			123		944	2.4								
TOTAL											91	364	3737	8	18259	48			139			613	52	

MODEL: R400ELMAMES
FILE NAME: STELEP



USER NAME = \$USERS	DESIGNED - JLS	REVISED - 1 08/29/23
PLOT SCALE = \$SCALE\$	DRAWN - JLS	REVISED -
PLOT DATE = \$DATES	CHECKED - AB	REVISED -
	DATE - 11/11/22	REVISED -

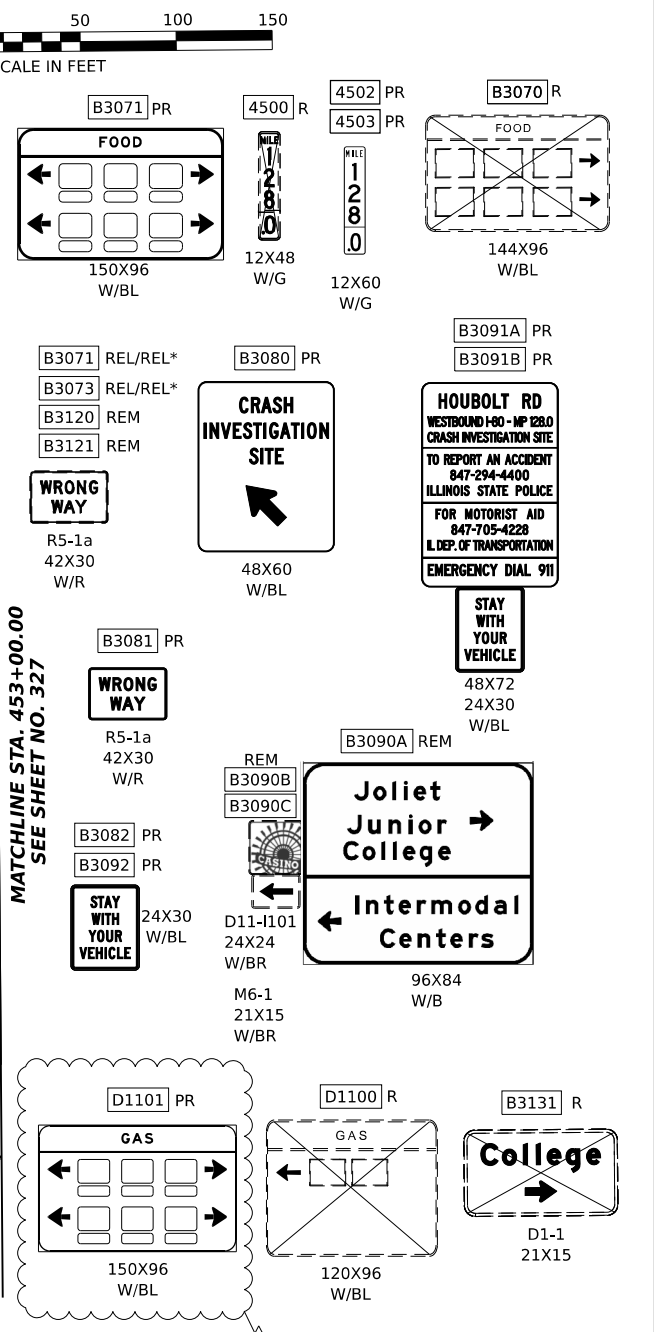
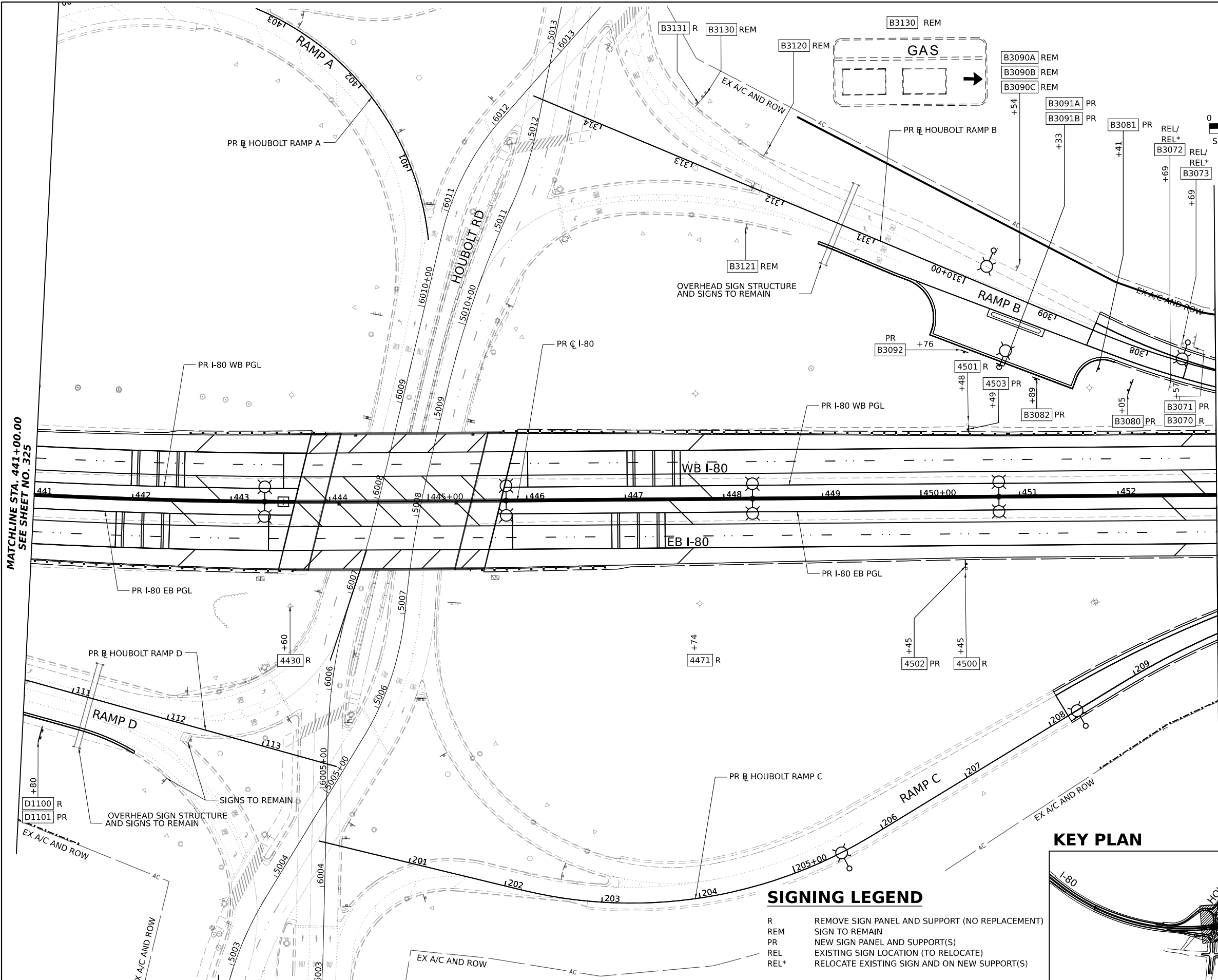
**STATE OF ILLINOIS
DEPARTMENT OF TRANSPORTATION**

PROPOSED SIGNING SCHEDULE

SCALE: NONE SHEET 5 OF 5 SHEETS STA. TO STA.

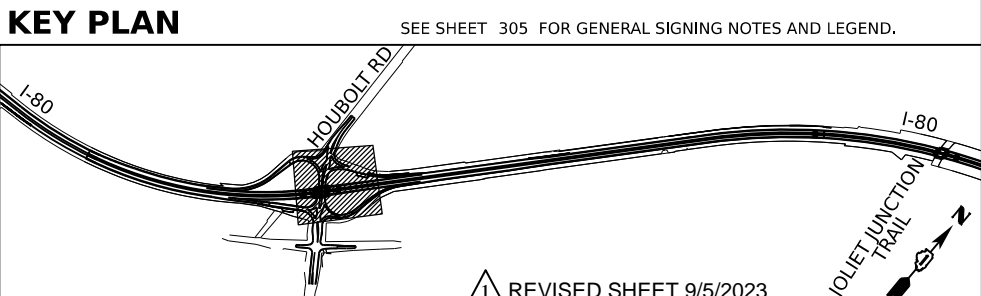
REVISOR SHEET 9/5/2023

F.A.I. RTE.	SECTION	COUNTY	TOTAL SHEETS	SHEET NO.
I-80	FAI 80 21 STRUCTURE 6	WILL	898	322
CONTRACT NO. 62R27			ILLINOIS FED. AID PROJECT	



SIGNING LEGEND

R REMOVE SIGN PANEL AND SUPPORT (NO REPLACEMENT)
 REM SIGN TO REMAIN
 PR NEW SIGN PANEL AND SUPPORT(S)
 REL EXISTING SIGN LOCATION (TO RELOCATE)
 REL* RELOCATE EXISTING SIGN AND ON NEW SUPPORT(S)



NOTES
 SEE SHEET 305 FOR GENERAL SIGNING NOTES AND LEGEND.

REVIS 1 9/5/2023



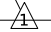
USER NAME = \$USERS	DESIGNED - JLS	REVISED - 1 08/29/23
PLOT SCALE = \$SCALE\$	DRAWN - JLS	REVISED -
PLOT DATE = \$DATES	CHECKED - AB	REVISED -
	DATE - 6/26/23	REVISED -

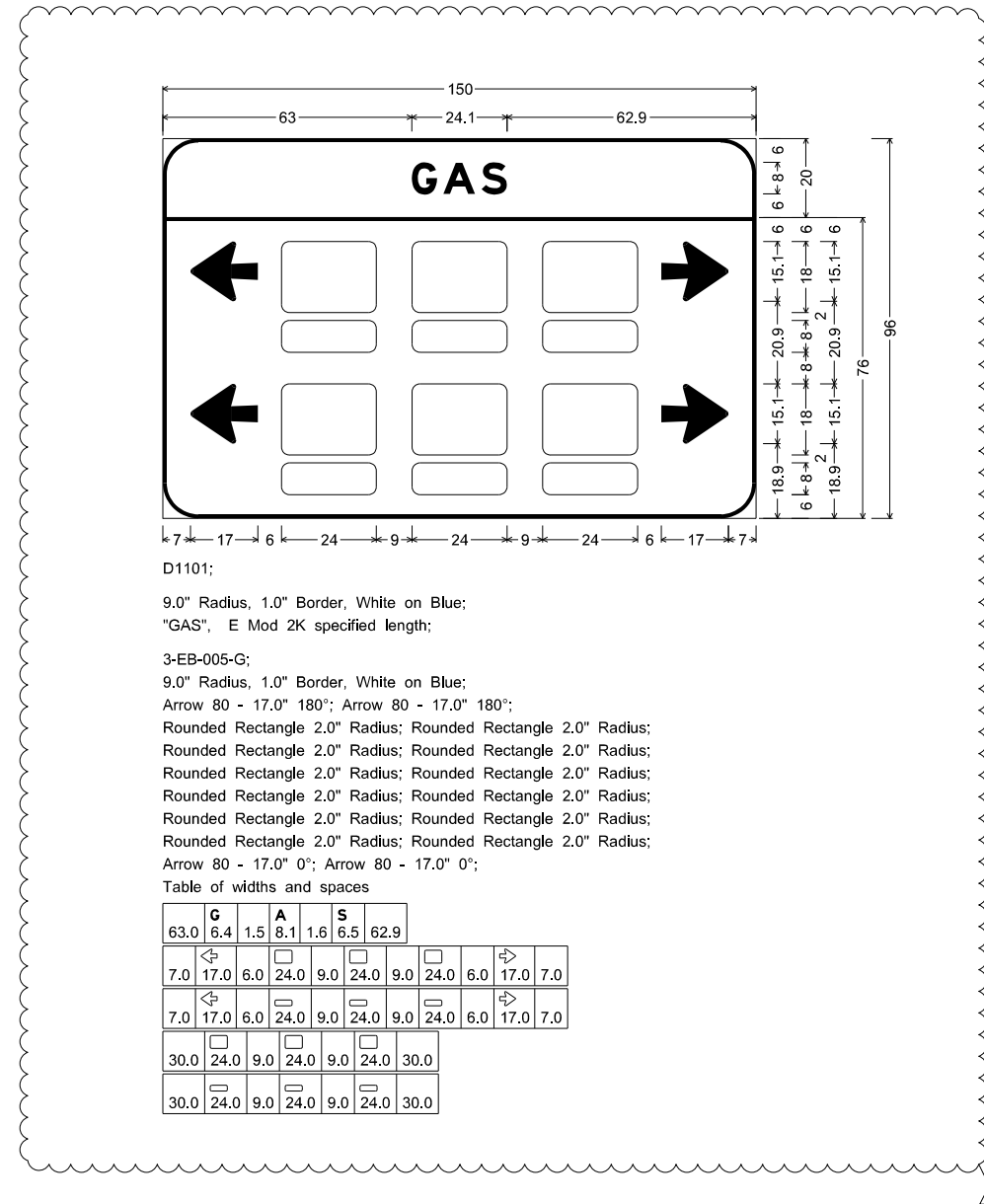
STATE OF ILLINOIS
DEPARTMENT OF TRANSPORTATION

EXISTING AND PROPOSED SIGNING PLAN
I-80
 SCALE: 1"=50' SHEET 4 OF 10 SHEETS STA. 441+00.00 TO STA. 453+00.00

F.A.I. RTE.	SECTION	COUNTY	TOTAL SHEETS	SHEET NO.
80	FAI 80 21 STRUCTURE 6	WILL	898	326
CONTRACT NO. 62R27				
ILLINOIS FED. AID PROJECT				


SIGN DETAIL
1:50

SIGN NUMBER	D1101
WIDTH x HEIGHT	12'-6" x 8'-0"
BORDER WIDTH	2" 
CORNER RADIUS	12"
MOUNTING	Ground Mounted
BACKGROUND	TYPE: Reflective - AP
	COLOR: Blue
LEGEND/BORDER	TYPE: Reflective - ZZ
	COLOR: White



MODEL: SPD-26
 FILE NAME: p:\transystems\pwbentley.com\transystems\pwbentley.com\transystems\CAD\62R27\62R27_SHT_Sign-Panel-Detail.dgn



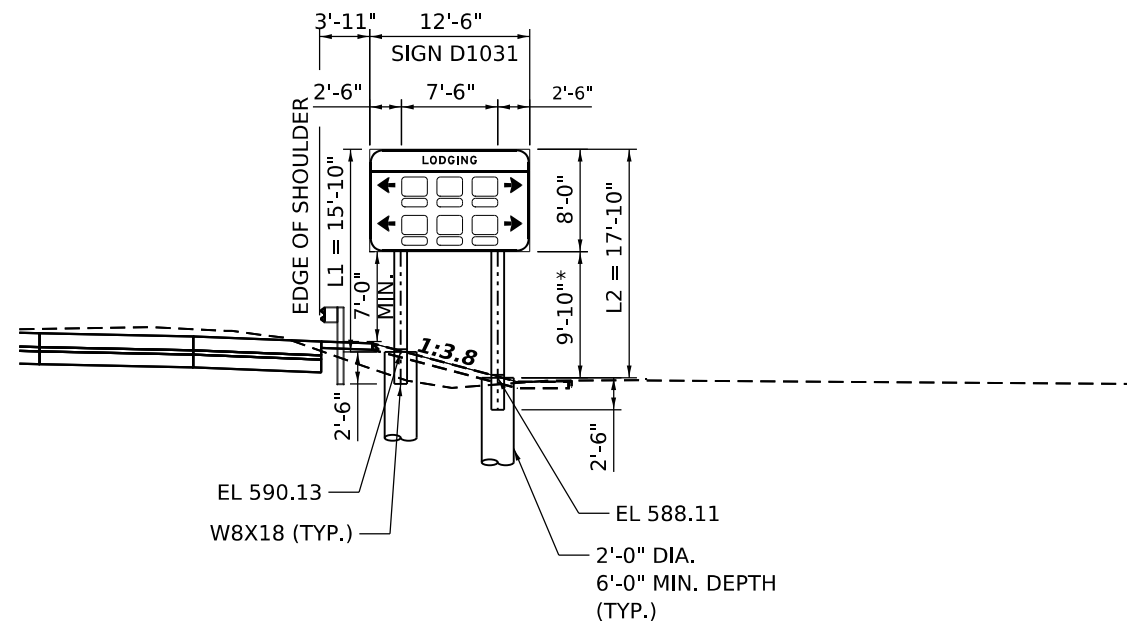
USER NAME = amkluver	DESIGNED - VLJ	REVISED -  08/29/23
PLOT SCALE = 0.16666633' / in.	DRAWN - AMK	REVISED -
PLOT DATE = 08/29/23	CHECKED - JMG	REVISED -
	DATE - 6/26/23	REVISED -

**STATE OF ILLINOIS
DEPARTMENT OF TRANSPORTATION**

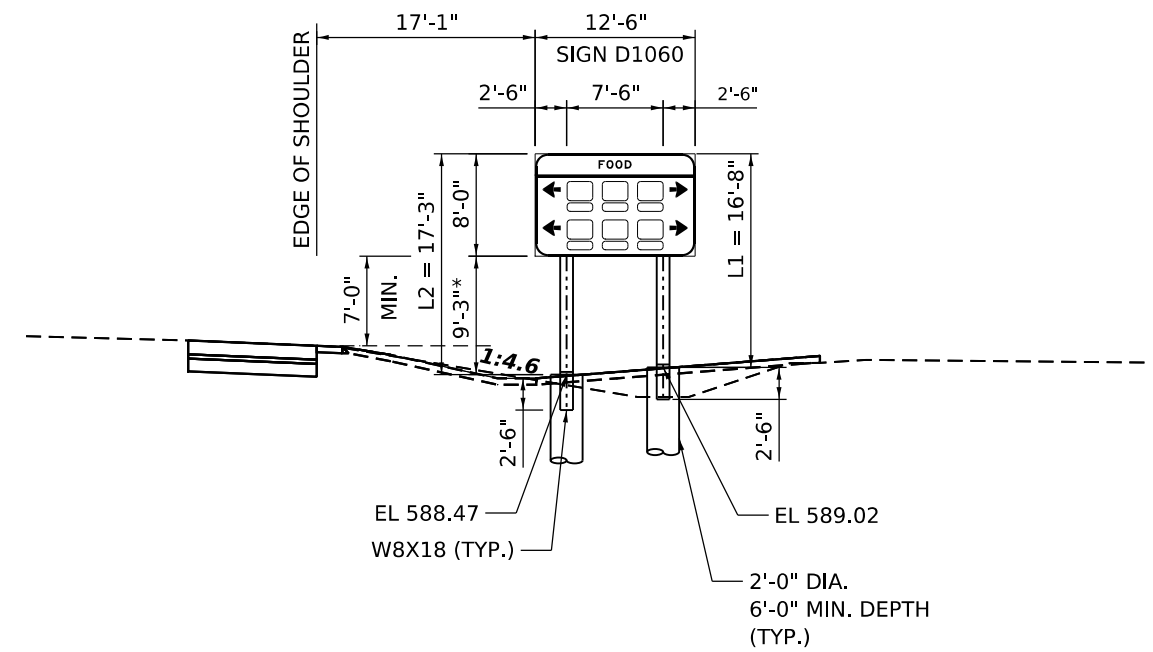
SIGN PANEL DETAILS			
I-80			
SCALE: NONE	SHEET 26	OF 33 SHEETS	STA. TO STA.

F.A.I. RTE.		SECTION	COUNTY	TOTAL SHEETS	SHEET NO.
I-80		FAI 80 21 STRUCTURE 6	WILL	898	358
				CONTRACT NO. 62R27	
ILLINOIS		FED. AID PROJECT			

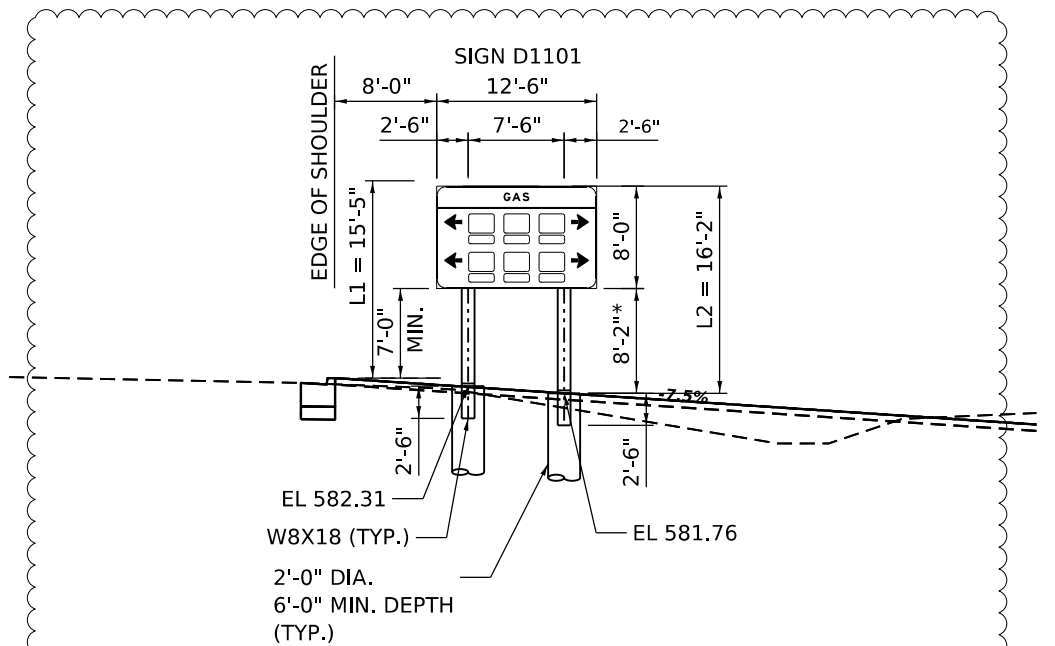
 REVISED SHEET 9/5/2023



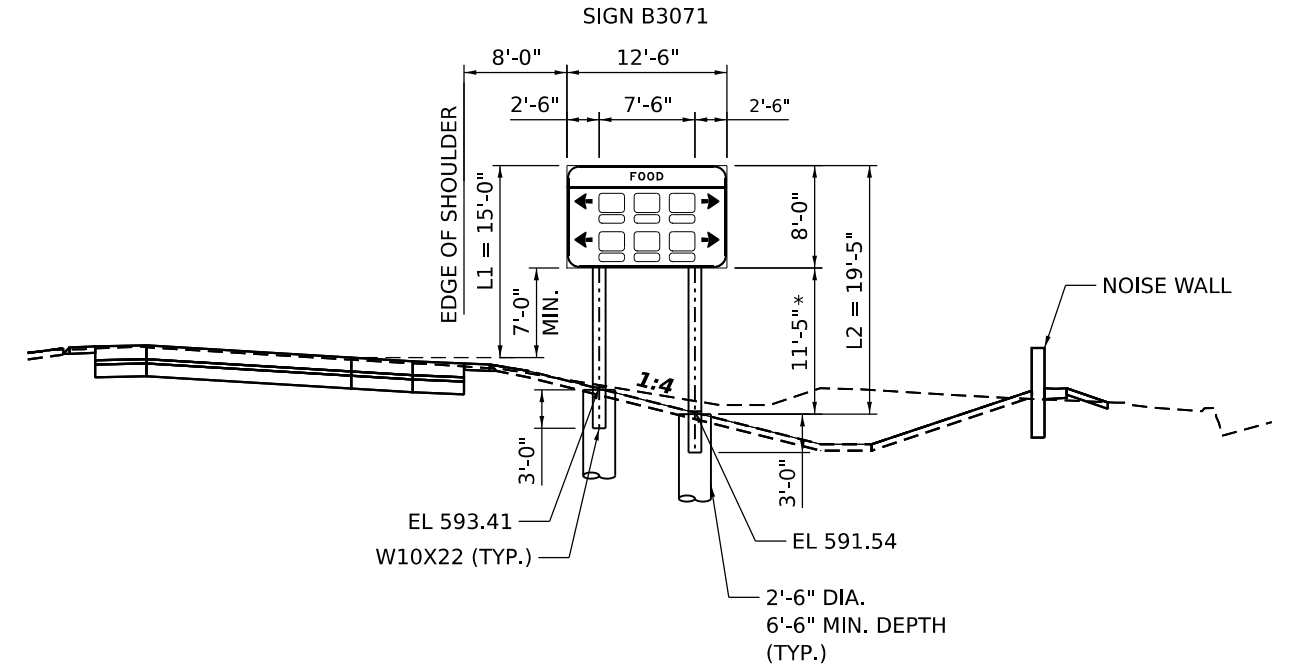
**SIGN D1031 (PROPOSED)
MOUNTING DETAIL
PROPOSED BREAKAWAY SIGN SUPPORTS
EB I-80 RAMP D STA 103+80
(LOOKING EAST)**



**SIGN D1060 (PROPOSED)
MOUNTING DETAIL
PROPOSED BREAKAWAY SIGN SUPPORTS
EB I-80 RAMP D STA 106+80
(LOOKING EAST)**



**SIGN D1101 (PROPOSED)
MOUNTING DETAIL
PROPOSED BREAKAWAY SIGN SUPPORTS
EB I-80 RAMP D STA 110+80
(LOOKING EAST)**



**SIGN B3071 (PROPOSED)
MOUNTING DETAIL
PROPOSED BREAKAWAY SIGN SUPPORTS
WB I-80 RAMP B STA 307+57
(LOOKING WEST)**

* CLEAR HEIGHT

MODEL: 4400ELNAMES
FILE NAME: 31E1E5



USER NAME = \$USERS	DESIGNED - JLS	REVISED - 1 08/29/23
PLOT SCALE = \$\$SCALE\$	DRAWN - JLS	REVISED -
PLOT DATE = \$DATES	CHECKED - AB	REVISED -
	DATE - 6/26/23	REVISED -

**STATE OF ILLINOIS
DEPARTMENT OF TRANSPORTATION**

**SIGN MOUNTING DETAILS
I-80**

SCALE: NONE SHEET 7 OF 8 SHEETS STA. TO STA.

F.A.I. RTE.	SECTION	COUNTY	TOTAL SHEETS	SHEET NO.
I-80	FAI 80 21 STRUCTURE 6	WILL	898	372
CONTRACT NO. 62R27				
ILLINOIS FED. AID PROJECT				

1 REVISED SHEET 9/5/2023

GENERAL NOTES

- Fasteners shall be ASTM F 3125 Grade A325 Type 1, mechanically galvanized bolts. Bolts 7/8 in. ϕ holes 1 1/16 in. ϕ , unless otherwise noted.
- Calculated weight of Structural Steel
M270 Grade 50 = 543,650
M270 Grade 36 = 27,280
- No field welding is permitted except as specified in the contract documents.
- Reinforcement bars designated (E) shall be epoxy coated.
- Prior to pouring the new concrete deck, all heavy or loose rust, loose mill scale, and other loose detrimental foreign material shall be removed from the surfaces in contact with concrete (SSPC - SP3 standards). Tightly adhered paint may remain unless otherwise noted. Removal shall be accomplished by methods that will not damage the steel and the cost will be paid for according to Article 109.04 of the Standard Specifications.

As directed by the Engineer, existing construction accessories welded to the top flange of beams and girders shall be removed. The weld areas shall be ground flush and inspected for cracks using magnetic particle testing (MT) or dye penetrant testing (PT) by qualified personnel approved by the Engineer. Any cracks that cannot be removed by grinding 1/4 in. deep shall be identified and reported to the Bureau of Bridges & Structures for further disposition. The cost of removing welded accessories, grinding and inspecting weld areas and grinding cracks will be paid for according to Article 109.04 of the Standard Specifications.

- Plan dimensions and details relative to existing plans are subject to nominal construction variations. The Contractor shall field verify existing dimensions and details affecting new construction and make necessary approved adjustments prior to construction or ordering of materials. Such variations shall not be cause for additional compensation for a change in scope of the work, however, the Contractor will be paid for the quantity actually furnished at the unit price bid for the work.
- The Inorganic Zinc Rich Primer / Acrylic / Acrylic Paint System shall be used for shop and field painting of new structural steel except where otherwise noted. The color of the final finish coat for all interior steel surfaces shall be Gray, Munsell No. 5B 7/1. The color of the final finish coat for the exterior and bottom flange of the fascia beams shall be Gray, Munsell No. 5B 7/1.
- Cleaning and painting of the existing structural steel shall be as specified in the special provisions for "Cleaning and Painting Existing Steel Structures". All beams, bearings, and other structural steel within 5 ft (measured along the beam) of either side of deck joints shall be cleaned per Near White Blast Cleaning (SSPC-SP10). The exterior surfaces and bottom of the bottom flange of the fascia beams shall be cleaned per Commercial Grade Power Tool Cleaning (SSPC-SP15).

The designated areas cleaned per Near White Blast Cleaning (SSPC-SP10) and per Commercial Grade Power Tool Cleaning (SSPC-SP15) shall be painted according to the requirements of paint system OZ/E/U. The color of the final finish coat for all interior steel surfaces shall be Gray, Munsell No. 5B 7/1. The color of the final finish coat for the exterior and bottom flange of the fascia beams shall be Gray, Munsell No. 5B 7/1.
- Containment of cleaning residue is required to control nuisance dust. See special provisions.
- Slipforming of the interior parapets is not allowed.

INDEX OF SHEETS

- S1-01 General Plan and Elevation
- S1-02 General Data 1
- S1-03 General Data 2
- S1-04 Foundation Layout
- S1-05 Removal Details and TSRS
- S1-06 Construction Staging Details 1
- S1-07 Construction Staging Details 2
- S1-08 Temporary Concrete Barrier
- S1-09 Top of Deck Elevations 1
- S1-10 Top of Deck Elevations 2
- S1-11 Top of Deck Elevations 3
- S1-12 Top of Deck Elevations 4
- S1-13 Top of Deck Elevations 5
- S1-14 Top of Deck Elevations 6
- S1-15 Top of West Approach Slab Elevations
- S1-16 Top of East Approach Slab Elevations
- S1-17 Superstructure Plan and Cross Section - WB
- S1-18 Superstructure Plan and Cross Section - EB
- S1-19 Parapet Elevation
- S1-20 Parapet Details
- S1-21 West Abutment Diaphragm
- S1-22 East Abutment Diaphragm
- S1-23 Superstructure Details 1
- S1-24 Superstructure Details 2
- S1-25 Approach Slab Details 1
- S1-26 Approach Slab Details 2
- S1-27 Approach Slab Details 3
- S1-28 Approach Slab Details 4
- S1-29 Approach Slab Details 5
- S1-30 Approach Slab Details 6
- S1-31 Framing Plan
- S1-32 Existing Girder Details 1
- S1-33 Existing Girder Details 2
- S1-34 Girder Elevation & Details
- S1-35 Structural Steel Details
- S1-36 Abutment Removal Details 1
- S1-37 Abutment Removal Details 2
- S1-38 West Abutment Plan and Elevation
- S1-39 West Abutment Details
- S1-40 East Abutment Plan and Elevation
- S1-41 East Abutment Details
- S1-42 Abutment Bar Details and Bill of Material
- S1-43 Pile Details
- S1-44 Concrete Parapet Slipforming Option
- S1-45 Bar Splicer and Mechanical Splicer Assembly Details
- S1-46 Boring Logs 1
- S1-47 Boring Logs 2

TOTAL BILL OF MATERIAL

Item	Unit	Super.	Sub.	Total
Slope Wall Removal	Sq. Yd	-	252	252
Removal Of Existing Concrete Deck No. 1	Each	1	-	1
Removal Of Existing Concrete Deck No. 2	Each	1	-	1
Concrete Removal	Cu. Yd.	-	130.5	130.5
Protective Shield	Sq. Yd.	1,201	-	1,201
Structure Excavation	Cu. Yd.	-	699.6	699.6
Floor Drains	Each	4	-	4
Concrete Structures	Cu. Yd.	-	166.7	166.7
Concrete Superstructure	Cu. Yd.	936.3	-	936.3
Protective Coat	Sq. Yd.	3,545	-	3,545
Concrete Superstructure (Approach Slab)	Cu. Yd.	390.4	-	390.4
Furnishing And Erecting Structural Steel	L. Sum	1	-	1
Stud Shear Connectors	Each	1,920	-	1,920
Reinforcement Bars, Epoxy Coated	Pound	314,420	30,710	345,130
Bar Splicers	Each	2,392	160	2,552
Mechanical Splicers	Each	48	-	48
Slope Wall 4 Inch	Sq. Yd.	-	222	222
Furnishing Steel Piles HP14X73	Foot	-	962	962
Driving Piles	Foot	-	962	962
Test Pile Steel HP14X73	Each	-	2	2
Pile Shoes	Each	-	28	28
Name Plates	Each	2	-	2
Preformed Joint Seal 3 1/2"	Foot	210	-	210
Anchor Bolts, 1"	Each	32	-	32
Temporary Soil Retention System	Sq. Ft.	-	740	740
Granular Backfill For Structures	Cu. Yd.	-	856.9	856.9
Geocomposite Wall Drain	Sq. Yd.	-	350	350
Concrete Headwalls For Pipe Drains	Each	-	4	4
Pipe Underdrains For Structures 4"	Foot	-	344	344
Pipe Underdrains For Structures (Special) 4"	Foot	-	160	160
Bridge Deck Grooving (Longitudinal)	Sq. Yd.	1,674	-	1,674
Containment And Disposal Of Non-Lead Paint Cleaning Residues No. 1	L. Sum	1	-	1
Containment And Disposal Of Non-Lead Paint Cleaning Residues No. 2	L. Sum	1	-	1
Structural Steel Removal	L. Sum	1	-	1
Cleaning And Painting Steel Bridge No. 1	L. Sum	1	-	1
Cleaning And Painting Steel Bridge No. 2	L. Sum	1	-	1
Diamond Grinding (Bridge Section)	Sq. Yd.	3,226	-	3,226

SCOPE OF WORK

- Remove existing lighting, bridge deck, & end diaphragms.
- Widen existing substructure to accomodate additional future traffic lanes.
- Erect new 54" Web-Plate Girders.
- Pour new deck & end diaphragms.
- Install new underpass lighting.

STATION 444+69.21
RE-BUILT 20_ BY
STATE OF ILLINOIS
F.A.I. RT. 80
SEC. FAI 80 21 STRUCTURE 6
LOADING HS20-44 & ALT
STRUCTURE NO. 099-0301

STATION 444+69.21
RE-BUILT 20_ BY
STATE OF ILLINOIS
F.A.I. RT. 80
SEC. FAI 80 21 STRUCTURE 6
LOADING HS20-44 & ALT
STRUCTURE NO. 099-0302

NAME PLATE (EB)
See Std. 515001

NAME PLATE (WB)
See Std. 515001

Existing Name Plate shall be cleaned and relocated next to new Name Plate. Cost included with Name Plates.

MODEL: Drawing
FILE NAME: p:\transystems-pw\transystems-pw\1-hosted\Documents\Projects_2018\CH401\401180022\02-Transystems\CAD\62R27\Sheets\23-Structural\099-0301 & 099-0302\0990301-62R27-002-GenData1.dgn



USER NAME = tjallen	DESIGNED - TJA	REVISED - 1 8/29/2023
	CHECKED - AMD	REVISED -
PLOT SCALE = NTS	DRAWN - TJA	REVISED -
PLOT DATE = 9/1/2023	CHECKED - WJC	REVISED -

STATE OF ILLINOIS
DEPARTMENT OF TRANSPORTATION

GENERAL DATA 1
STRUCTURE NOS. 099-0301 (EB) & 099-0302 (WB)

SHEET S1-02 OF S1-47 SHEETS

REVISD ENTIRE SHEET 9/5/2023	
F.A.I. RTE.	SECTION
I-80	FAI 80 21 STRUCTURE 6
COUNTY	WILL
TOTAL SHEETS	898
SHEET NO.	513
CONTRACT NO. 62R27	
ILLINOIS	FED. AID PROJECT

TOTAL BILL OF MATERIAL

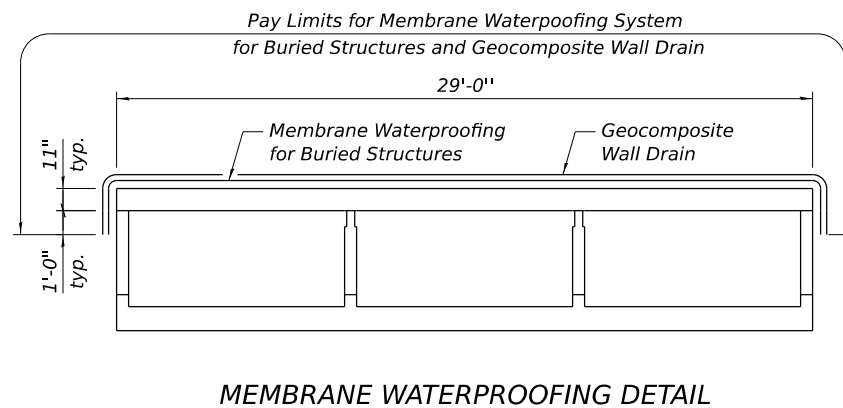
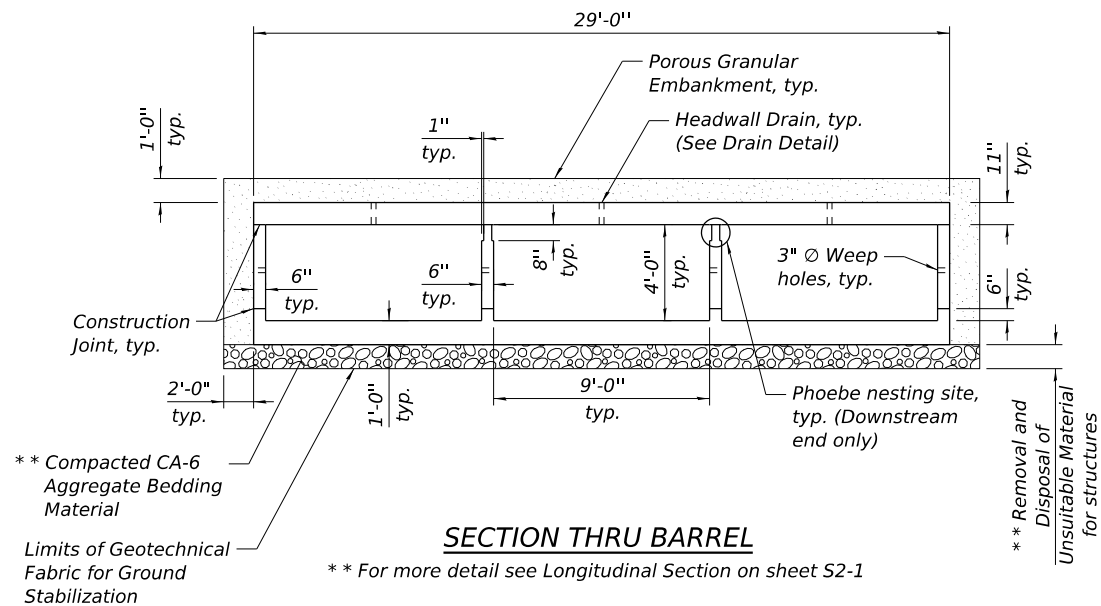
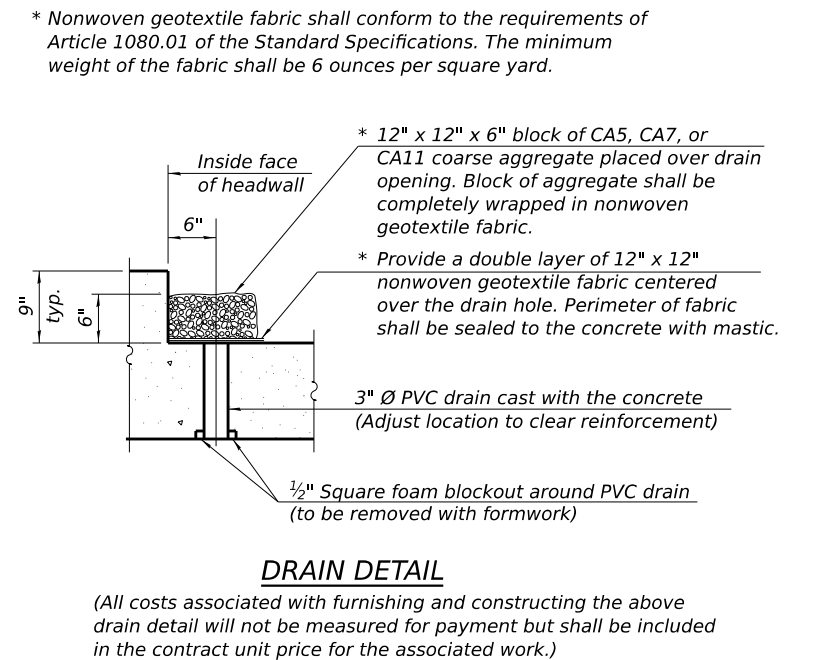
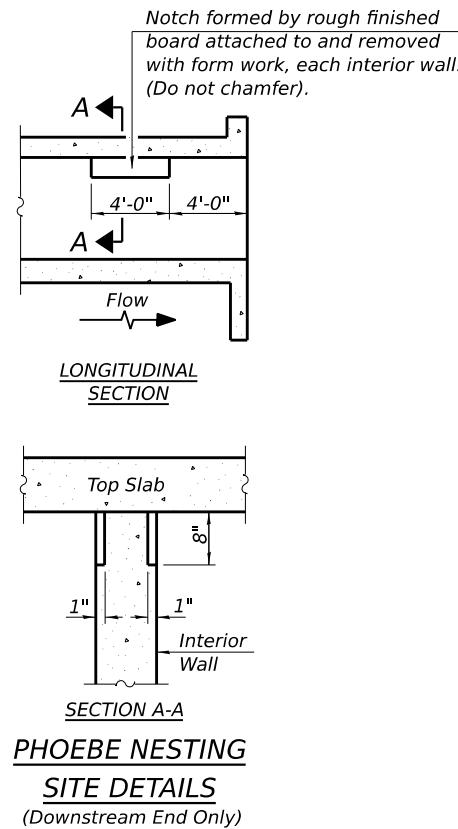
ITEM	UNIT	TOTAL
Porous Granular Embankment	Cu. Yd.	352.6
Geotechnical Fabric For Ground Stabilization	Sq. Yd.	491
Removal of Existing Structures	Each	1
Structure Excavation	Cu. Yd.	2,646.0
Removal and Disposal of Unsuitable Material for Structures	Cu. Yd.	202.8
Reinforcement Bars	Pound	103,010
Bar Splicers	Each	296
Name Plates	Each	1
Temporary Soil Retention System	Sq. Ft.	3,066
Concrete Box Culverts	Cu. Yd.	414.9
Granular Backfill for Structures	Cu. Yd.	202.8
Geocomposite Wall Drain	Sq. Yd.	624
Membrane Waterproofing System for Buried Structures	Sq. Yd.	624

GENERAL NOTES

- Precast alternate is not allowed.
- This box culvert has a fill height of 3.0 feet.
- Undercut shall be paid for at the contract unit per cubic yard as Removal and Disposal of Unsuitable Material for Structures. CA-6 bedding stone will be paid for at the contract unit price per cubic yard as Granular Backfill for Structures. The limits and quantities of removal and replacement shown are based on the boring data and may be modified by the District Geotechnical and Field Engineers for variable subsurface conditions encountered in the field.
- Drain holes shall conform to the requirements of Article 503.11 of the Standard Specifications. Cost shall be included in Concrete Box Culverts.
- All exposed edges shall have 3/4" chamfer.
- Removal of existing culverts shall include any headwalls, wingwalls, or aprons attached to the culvert. Excavation of earth necessary to perform removal of existing structures will not be measured for payment.
- Geocomposite Wall Drain shall be according to Section 591 of the Standard Specifications, except that concrete nails shall not be used in areas where it overlaps Membrane Waterproofing System for Buried Structures.
- Geotechnical Fabric for Ground Stabilization shall extend of both side edges, along the vertical face, and overlap 12in. or greater in the direction of the turn in the locations where Bedding Material is placed.

INDEX OF SHEETS

- S2-1 General Plan & Elevation
- S2-2 General Data
- S2-3 Temporary Soil Retention System
- S2-4 - S2-5 Staging & Details
- S2-6 - S2-8 Culvert Details
- S2-9 Bar Splicer Assembly and Mechanical Splicer Details
- S2-10 Soil Boring Logs



STATION 494+81.88
BUILT 202_BY
STATE OF ILLINOIS
F.A.I. RTE. 80
SEC. F.A.I. 80 21 STRUCTURE 6
LOADING HL-93
STRUCTURE NO. 099-0760

NAME PLATE
See Std. 515001

MODEL: Sheet
FILE NAME: pw:/transystems-pw/bentley.com:TRANSSYSTEMS-CORP-PW1-HOSTED/DOCUMENTS/PROJECTS_2018/CH401/401180022/02-TRANSYSTEMS/CAD/62R27/SHEETS/3-STRUCTURAL/Culvert/62R27-099-0760-002-General Data.dgn
8/30/2023 11:23:24 AM



USER NAME =	DESIGNED - JA	REVISED - 08/29/2023
PLOT SCALE =	CHECKED - DD	REVISED -
PLOT DATE =	DRAWN - JA	REVISED -
	CHECKED - DD	REVISED -

STATE OF ILLINOIS
DEPARTMENT OF TRANSPORTATION

GENERAL DATA
STRUCTURE NO. 099-0760

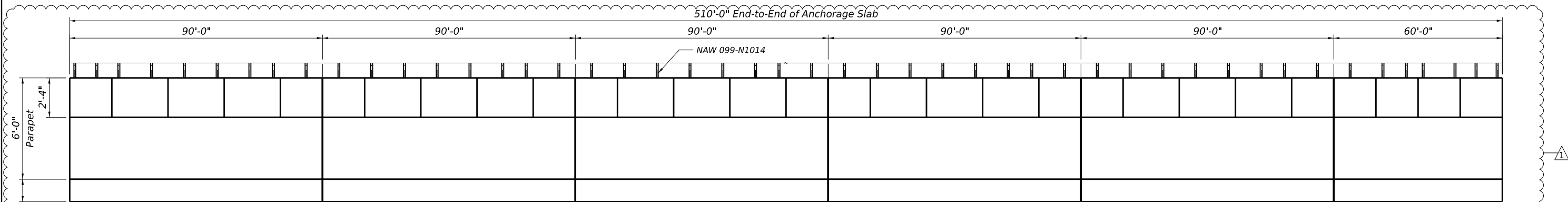
SHEET S2-2 OF S2-10 SHEETS

REVISED SHEET 9/5/2023

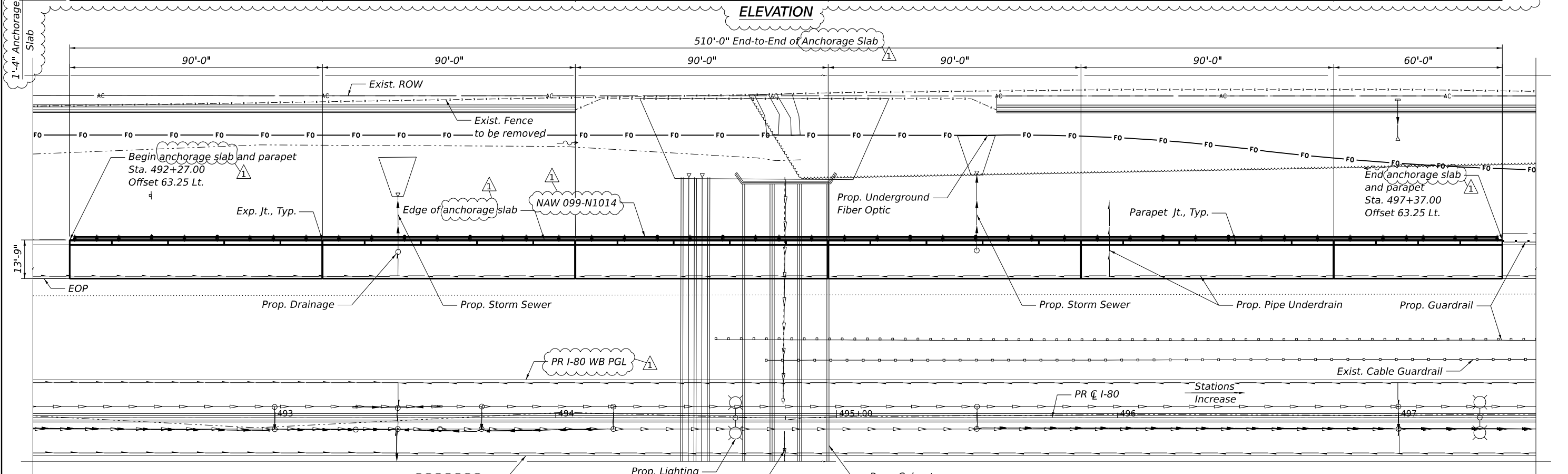
F.A.I. RTE.	SECTION	COUNTY	TOTAL SHEETS	SHEET NO.
I-80	FAI 80 21 STRUCTURE 6	WILL	898	608
CONTRACT NO. 62R27				

ILLINOIS FED. AID PROJECT

Benchmark: Mag nail on pavement of outside shoulder of WB I-80, approximately 55' from the headwall in the median at Station 478+86.23, Offset 62.35' LT, Elev. 600.750. See Alignment, Tie and Benchmark Sheets.



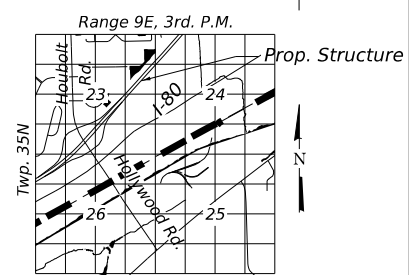
ELEVATION



PLAN



Signed *Moussa A. Issa*
 Dr. Moussa A. Issa, S.E. IL. LIC. No. 081-005738
 Expires 11-30-2024
 Date 06/21/2023 For Sheets S5-1 thru S5-10



LOCATION SKETCH

ABBREVIATIONS

Exp.	Expansion	F.F.	Front Face
Jt.	Joint	B.F.	Back Face
PGL	Profile Grade Line	E.E.	Each End
Lt.	Left	Prop.	Proposed
Rt.	Right	PR	Proposed
Spa.	Space	Exist.	Expansion
Sta.	Station	Exp.	Existing
Elev.	Elevation	Jt.	Joint
Typ.	Typical	EOP	Edge of Pavement
PJF	Preformed Joint Filler	NAW	Noise Abatement Wall

DESIGN LOADS

Overturning and Sliding (Static)
 106k
 Strength (Dynamic)
 260k

DESIGN SPECIFICATIONS

2020 AASHTO LRFD Bridge Design Specifications, 9th Edition

DESIGN STRESSES

FIELD UNITS
 $f_c = 4,000$ psi (Concrete)
 $f_y = 60,000$ psi (Reinforcement)

NOTES:

- For General Notes, Index of Sheets, Legend, and Total Bill of Material, see Sheet S5-2.
- Stations and offsets are measured along CL I-80 to outside edge of anchorage slab.
- For details of NAW SN 099-N1014, see plans in this contract.

GENERAL PLAN AND ELEVATION ANCHORAGE SLAB ALONG I-80

F.A.I. RTE. I-80
 SEC. FAI 80 21 STRUCTURE 6
 WILL COUNTY
 STA. 492+27.00 TO STA. 497+37.00
 (ANCHORAGE SLAB 14)

MODEL: HBM\DEL\NAMEES FILE NAME: SHEETS



USER NAME = SUSERS	DESIGNED - SK	REVISED - 8/29/23
PLOT SCALE =	DRAWN - SK	REVISED -
PLOT DATE = SDATES	CHECKED - MAI	REVISED -
	DATE - 6/26/23	REVISED -

STATE OF ILLINOIS DEPARTMENT OF TRANSPORTATION

ANCHORAGE SLAB 14
 GENERAL PLAN AND ELEVATION
 SCALE: SHEET S5-1 OF 55-10 SHEETS STA. TO STA.

F.A.I. RTE.	SECTION	COUNTY	TOTAL SHEETS	SHEET NO.
I-80	FAI 80 21 STRUCTURE 6	WILL	898	651
CONTRACT NO. 62R27				
ILLINOIS FED. AID PROJECT				