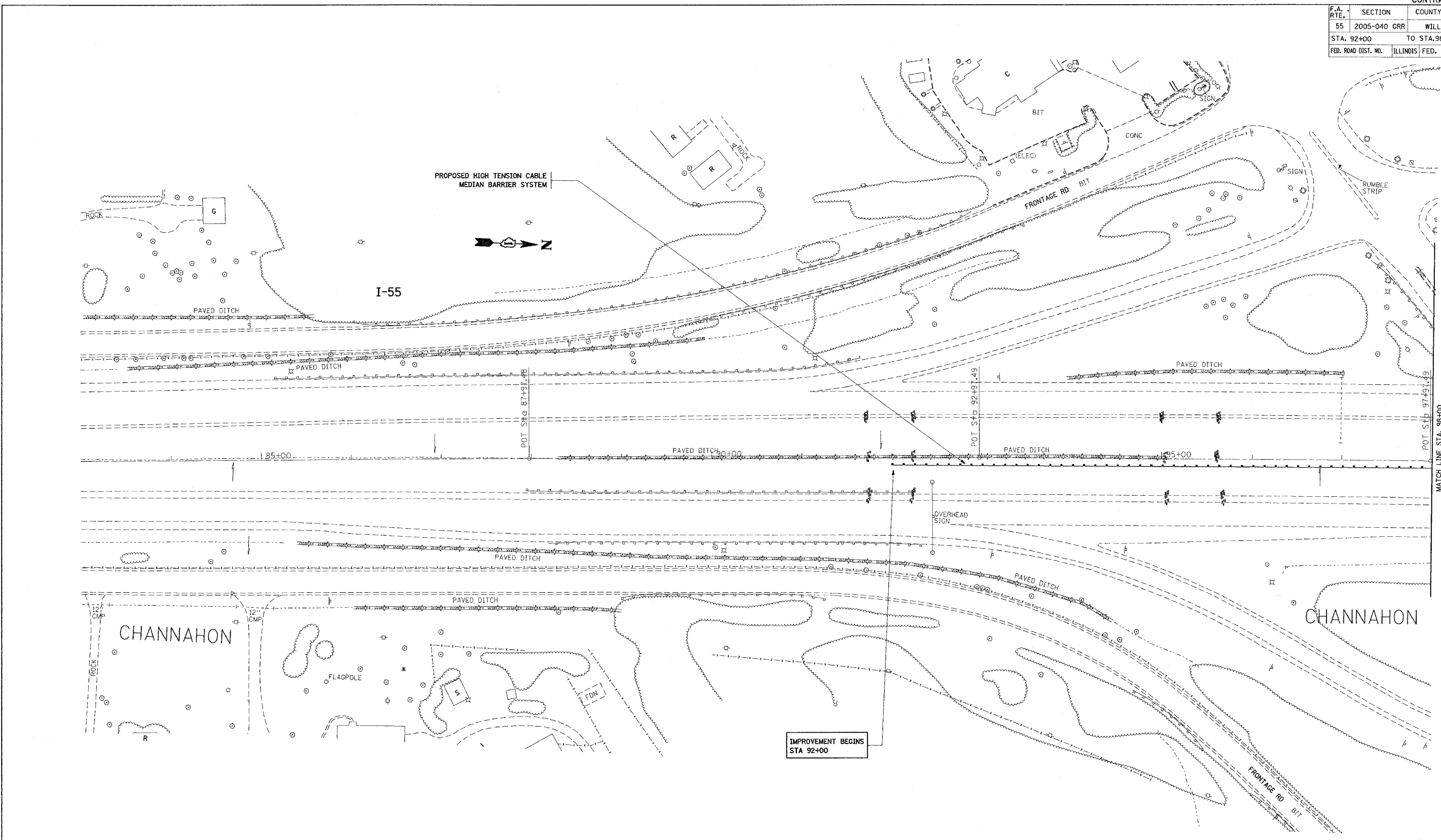


F.A. RTE.	SECTION	COUNTY	TOTAL SHEETS	SHEET NO.
55	2005-040 GRR	WILL	14	5
STA. 92+00		TO STA. 98+00		
FED. ROAD DIST. NO.		ILLINOIS FED. AID PROJECT		



REVISIONS	
NAME	DATE

ILLINOIS DEPARTMENT OF TRANSPORTATION

FAI 55/ I-55
US 6 TO SOUTH OF I-80
EXISTING / PROPOSED ROADWAY PLAN

SCALE: VERT. 1"=50'
 HORIZ. 1"=50'
 DATE 7/8/2005

DRAWN BY: HMO
 CHECKED BY:

PLOT DATE = 7/8/2005
 FILE NAME = o:\projects\60a11\27285\shh\1-1500-2.dwg
 PLOT SCALE = 5/8,000 / IN.
 USER NAME = omanrhm