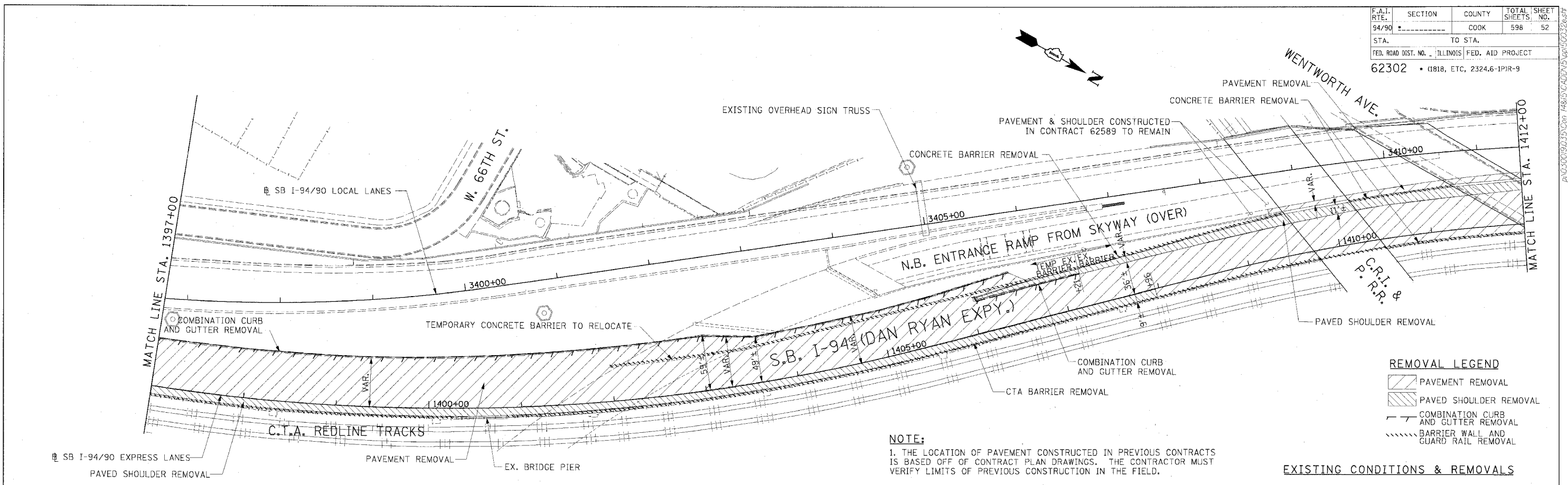


F.A.I. RTE.	SECTION	COUNTY	TOTAL SHEETS	SHEET NO.
94/90		COOK	598	52
STA.	TO STA.			
FED. ROAD DIST. NO.	ILLINOIS FED. AID PROJECT			
62302	1818, ETC, 2324.6-IPR-9			

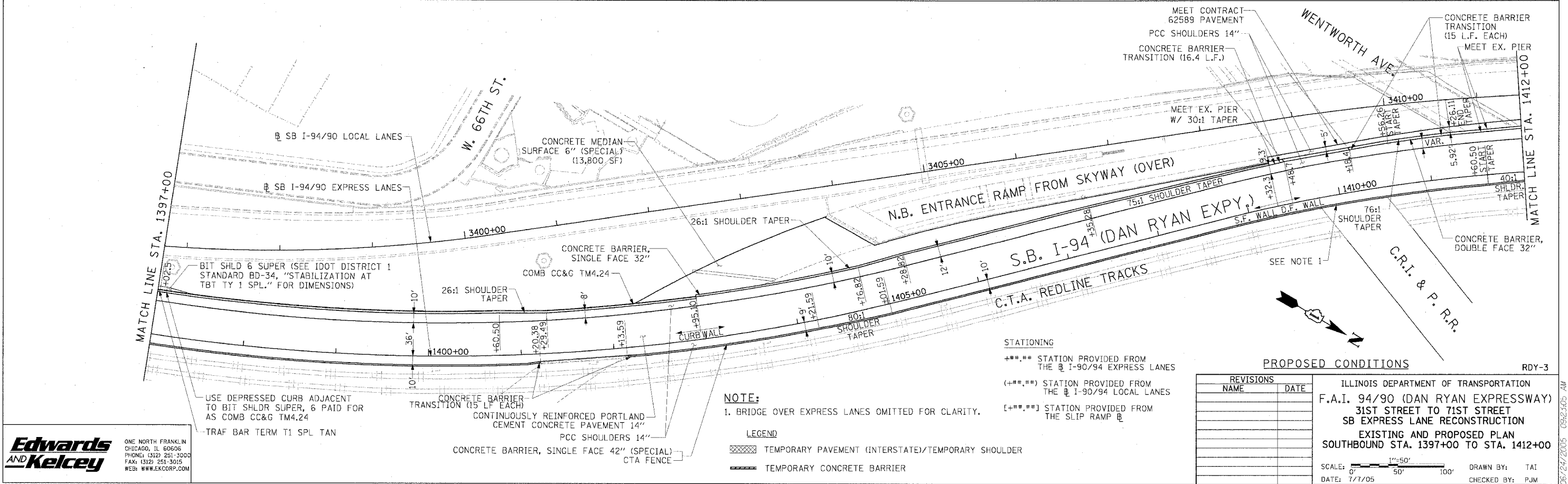


REMOVAL LEGEND

[Hatched Pattern]	PAVEMENT REMOVAL
[Diagonal Lines]	PAVED SHOULDER REMOVAL
[Dashed Line]	COMBINATION CURB AND GUTTER REMOVAL
[Dotted Line]	BARRIER WALL AND GUARD RAIL REMOVAL

NOTE:
 1. THE LOCATION OF PAVEMENT CONSTRUCTED IN PREVIOUS CONTRACTS IS BASED OFF OF CONTRACT PLAN DRAWINGS. THE CONTRACTOR MUST VERIFY LIMITS OF PREVIOUS CONSTRUCTION IN THE FIELD.

EXISTING CONDITIONS & REMOVALS



STATIONING

. STATION PROVIDED FROM THE SB I-94/94 EXPRESS LANES
 (***.***) STATION PROVIDED FROM THE SB I-94/94 LOCAL LANES
 [***.***] STATION PROVIDED FROM THE SLIP RAMP

REVISIONS	
NAME	DATE

NOTE:
 1. BRIDGE OVER EXPRESS LANES OMITTED FOR CLARITY.

LEGEND

[Hatched Pattern]	TEMPORARY PAVEMENT (INTERSTATE)/TEMPORARY SHOULDER
[Dashed Line]	TEMPORARY CONCRETE BARRIER

PROPOSED CONDITIONS RDY-3

ILLINOIS DEPARTMENT OF TRANSPORTATION
 F.A.I. 94/90 (DAN RYAN EXPRESSWAY)
 31ST STREET TO 71ST STREET
 SB EXPRESS LANE RECONSTRUCTION
 EXISTING AND PROPOSED PLAN
 SOUTHBOUND STA. 1397+00 TO STA. 1412+00

SCALE: 1"=50'
 DATE: 7/1/05
 DRAWN BY: TAI
 CHECKED BY: PJM

Edwards AND Kelcey
 ONE NORTH FRANKLIN
 CHICAGO, IL 60606
 PHONE: (312) 251-3000
 FAX: (312) 251-3015
 WEB: WWW.EKCORP.COM