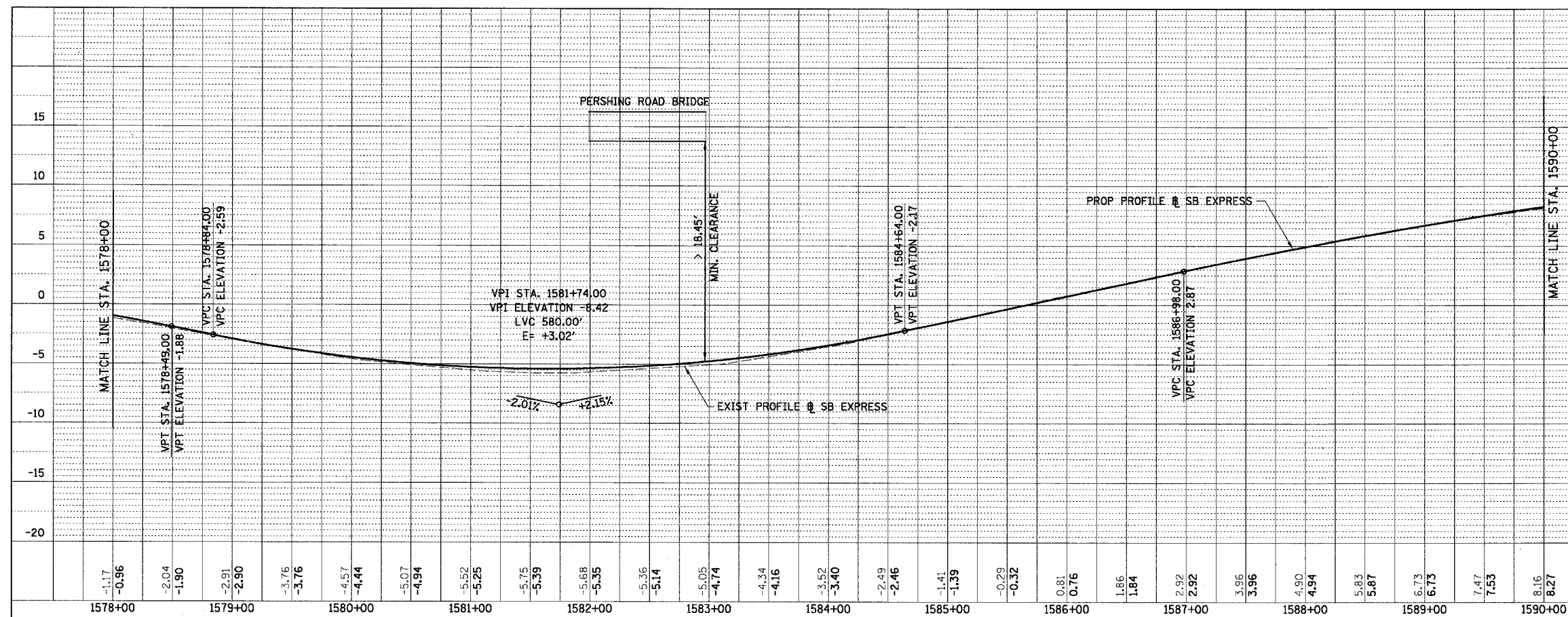
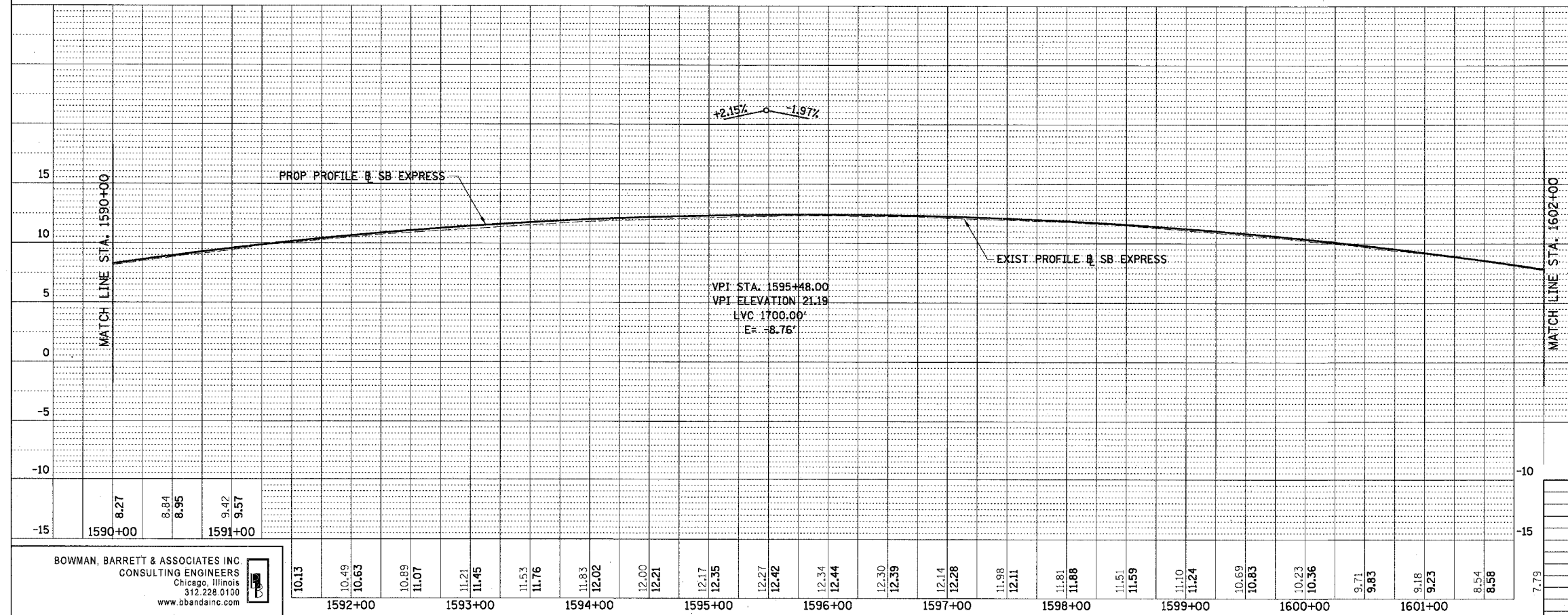


F.A.I.	SECTION	COUNTY	TOTAL SHEETS	SHEET NO.
94/90	*	COOK	598	79
STA. 1578+00		TO STA. 1602+00		
FED. ROAD DIST. NO.	ILLINOIS	FED. AID PROJECT		

PLAN	SURVEYED	BY	DATE
NOTE BOOK NO.	PLOTTED		
	ALIGNED		
	CHECKED		
	DATE FILED		



PLAN	SURVEYED	BY	DATE
NOTE BOOK NO.	PLOTTED		
	ALIGNED		
	CHECKED		
	DATE FILED		



REVISIONS	DATE
NAME	

ILLINOIS DEPARTMENT OF TRANSPORTATION
F.A.I. 94/90 (DAN RYAN EXPRESSWAY)
 31ST STREET TO 71ST STREET
 SB EXPRESS LANE RECONSTRUCTION
 EXISTING AND PROPOSED PROFILE
 SOUTHBOUND STA. 1578+00 TO STA. 1602+00

SCALE: 1"=25' VERT
 1"=50' HORIZ
 DATE: 07/07/05

DRAWN BY: RA
 CHECKED BY: KR

BOWMAN, BARRETT & ASSOCIATES INC
 CONSULTING ENGINEERS
 Chicago, Illinois
 312.228.0100
 www.bbainc.com

6/24/2005 3:47:18 PM
 I:\62302\94\90\1818\ETC\2324.6-1PIR-9\PROFILES\PRO-9.DWG