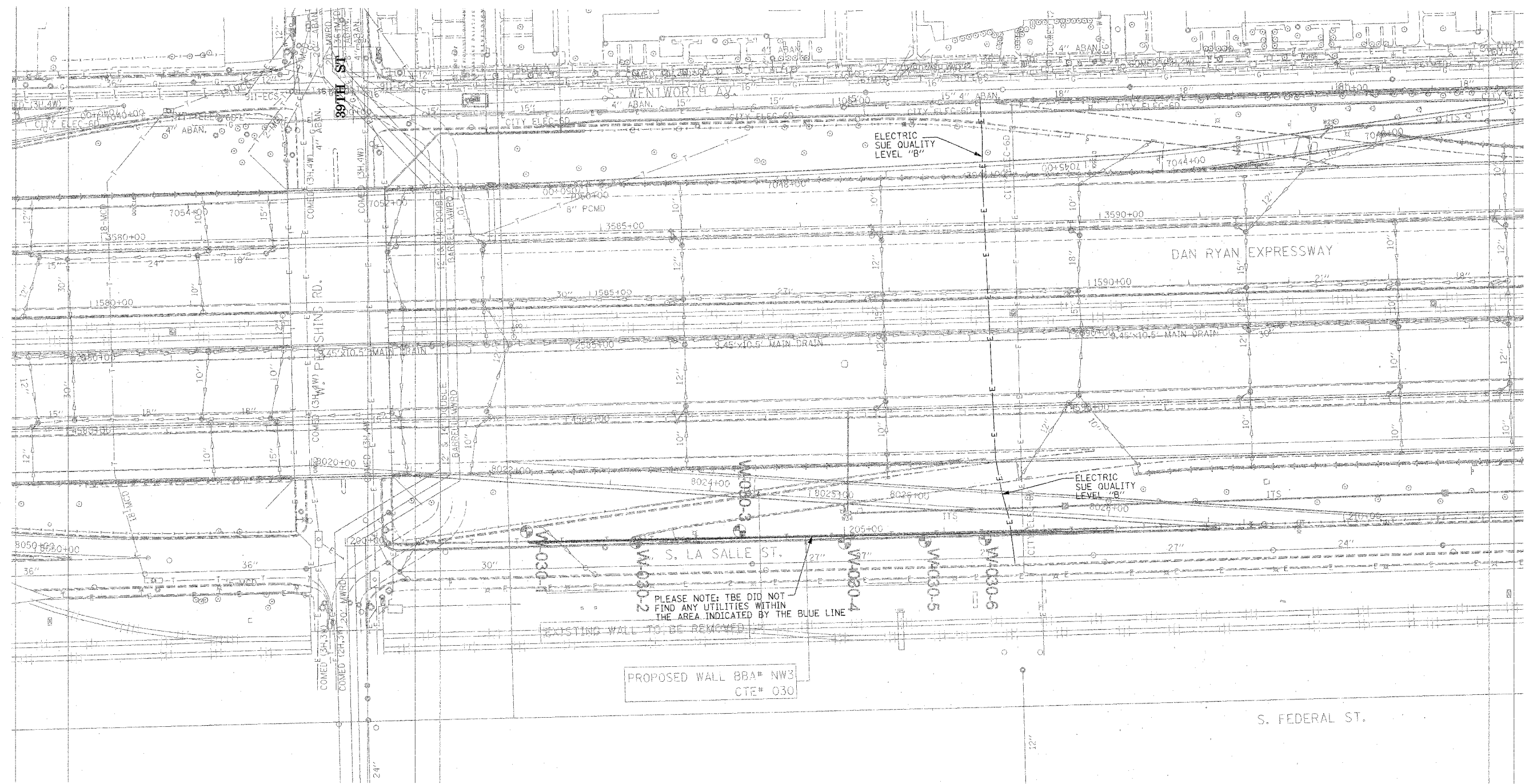


F.A. RTE.	SECTION	COUNTY	TOTAL SHEETS	SHEET NO.
0516.11717 & 1818-6		Cook	598	249
STA.	TO STA.			
FED. ROAD DIST. NO.	ILLINOIS	FED. AID PROJECT		



PLEASE NOTE: TBE DID NOT FIND ANY UTILITIES WITHIN THE AREA INDICATED BY THE BLUE LINE

PROPOSED WALL BBA# NW3
CTE# 030



TBE GROUP, INC.
CIVIL ENGINEERING * TRANSPORTATION * ENVIRONMENTAL
* PLANNING * UTILITY ENGINEERING/LOCATING
SOUTHERN REGION: FL, GA, SC, NC
NORTHERN REGION: IL, IN, MI, OH, MD, NJ, NY
PA, VA, CANADA
WESTERN REGION: AZ, NV, NM, TX, CA, OR, UT, WA

IL09500164, 167, 168, 170, 171, 179, 180, 182, 204,
205, 206, 211, 212, 219, 221, 225, 226, 227, 228, 230, 232
TBE SUE PAGE NO: 33 of 36
Checked by: *[Signature]*
SUE Quality Level "A" : Test Holes
SUE Quality Level "B" : Designating

—TS—	—TS—	TRAFFIC SIGNAL
—SL—	—SL—	STREET LIGHT
—COCE—		CITY OF CHICAGO ELECTRIC
—T—	—T—	TELEPHONE
—W—	—W—	WATER
—G—	—G—	GAS
—CTV—	—CTV—	CABLE TELEVISION
—FO—	—FO—	FIBER OPTIC
—E—	—E—	ELECTRIC
—●—		TEST HOLE

Utilities shown on these plans as depicted in the legend have been investigated by TBE Group, Inc in accordance with SUE Industry Standards. All other information shown has been provided to TBE Group, Inc by others.

TBE could not locate buried utilities directly beneath the expressway due to traffic and safety issues.

205 W. WACKER DRIVE
SUITE 1020
CHICAGO, IL 60606
(312) 704-1970

REVISIONS	
NAME	DATE

ILLINOIS DEPARTMENT OF TRANSPORTATION
SUE Investigation of Underground Utilities
I-90/I-94 Dan Ryan Expressway from
I-57. to 69th Street
Contract Number: 62590, 62592, 62594
DRAWN BY : KLC
SCALE : 1" = 50'
SQL "B" DATE : 7/22/04