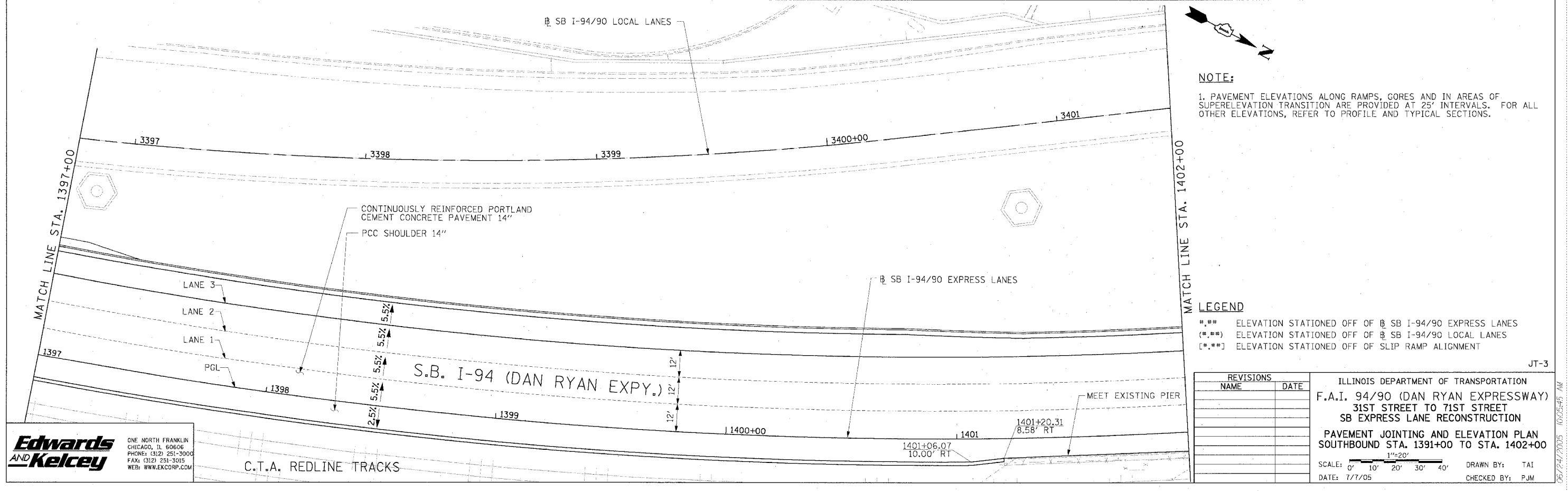
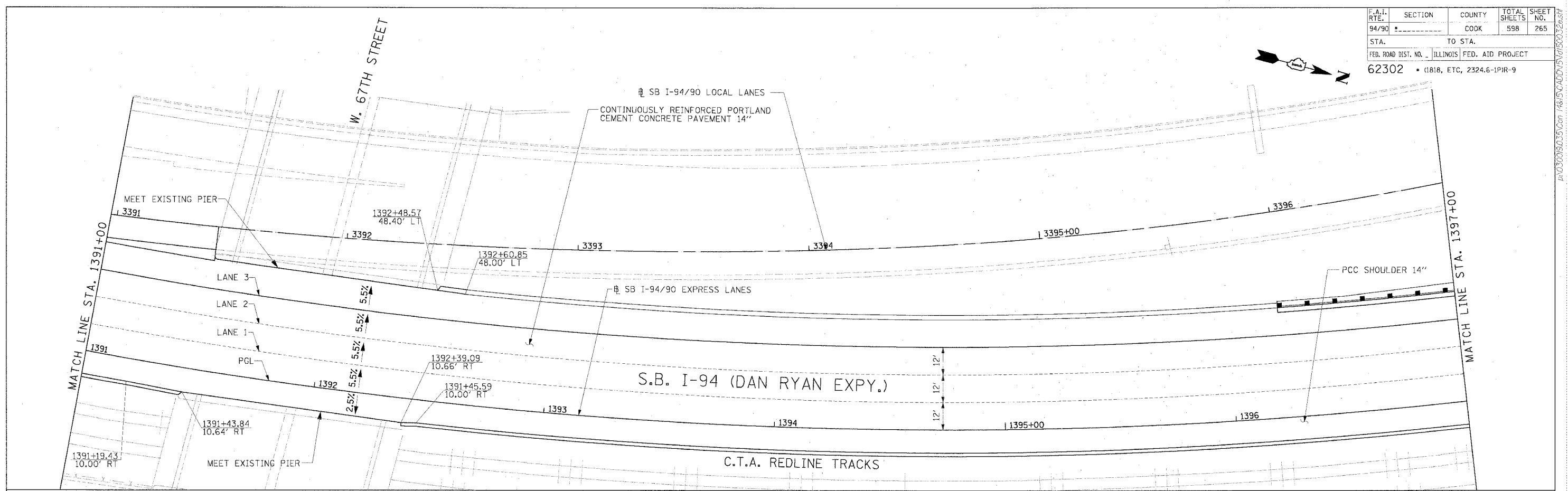


F.A.I. RTE. 94/90	SECTION A	COUNTY COOK	TOTAL SHEETS 598	SHEET NO. 265
STA. 62302		TO STA. 11818, ETC., 2324.6-1P/R-9		
FED. ROAD DIST. NO.		ILLINOIS FED. AID PROJECT		



NOTE:
1. PAVEMENT ELEVATIONS ALONG RAMPS, CORES AND IN AREAS OF SUPERELEVATION TRANSITION ARE PROVIDED AT 25' INTERVALS. FOR ALL OTHER ELEVATIONS, REFER TO PROFILE AND TYPICAL SECTIONS.

LEGEND
 [**] ELEVATION STATIONED OFF OF SB I-94/90 EXPRESS LANES
 [**] ELEVATION STATIONED OFF OF SB I-94/90 LOCAL LANES
 [***] ELEVATION STATIONED OFF OF SLIP RAMP ALIGNMENT

REVISIONS	DATE

ILLINOIS DEPARTMENT OF TRANSPORTATION
 F.A.I. 94/90 (DAN RYAN EXPRESSWAY)
 31ST STREET TO 71ST STREET
 SB EXPRESS LANE RECONSTRUCTION
 PAVEMENT JOINTING AND ELEVATION PLAN
 SOUTHBOUND STA. 1391+00 TO STA. 1402+00
 SCALE: 0' 10' 20' 30' 40' 1"=20'
 DATE: 7/7/05
 DRAWN BY: TAI
 CHECKED BY: PJM

Edwards AND Kelcey
 ONE NORTH FRANKLIN
 CHICAGO, IL 60606
 PHONE: (312) 251-3000
 FAX: (312) 251-3015
 WEB: WWW.EKCCORP.COM

JT-3
 06/24/2005 10:05:45 AM