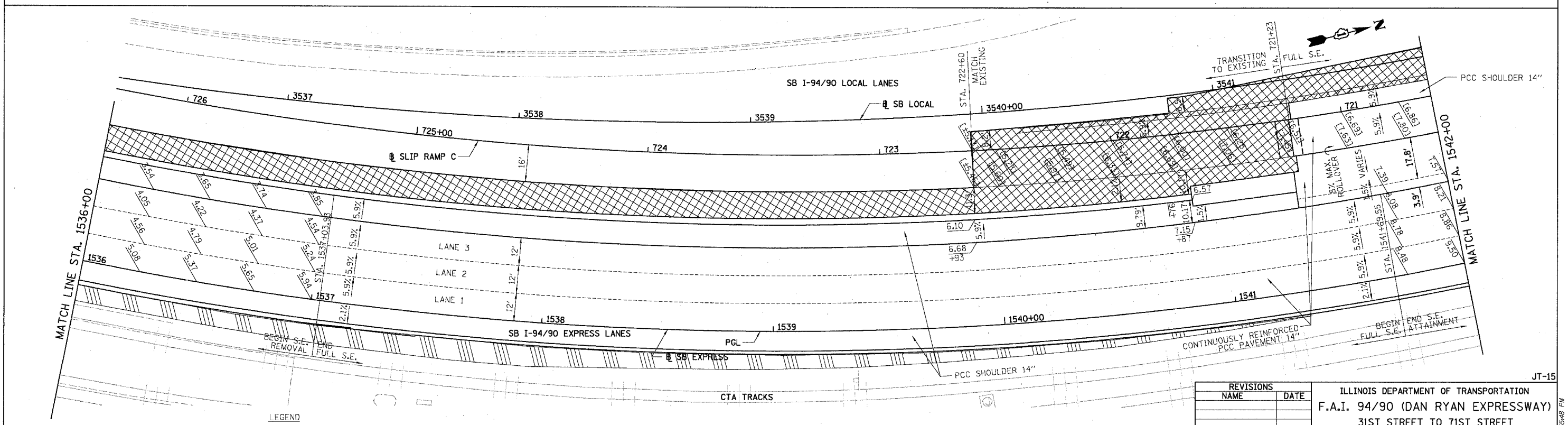
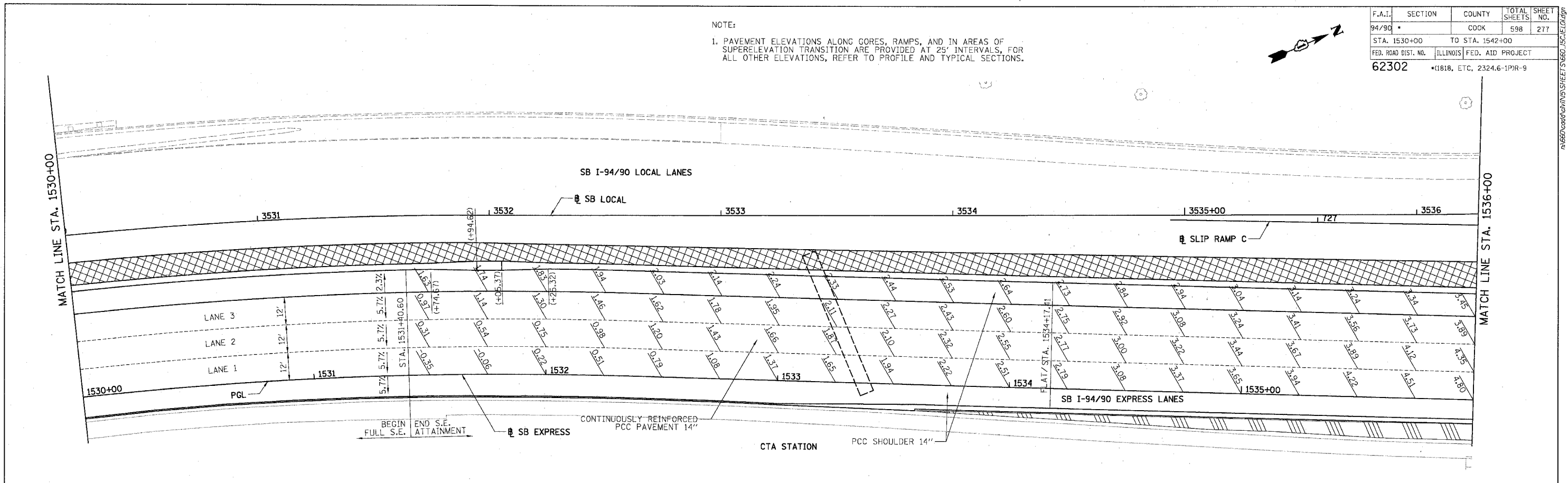


F.A.I.	SECTION	COUNTY	TOTAL SHEETS	SHEET NO.
94/90	*	COOK	598	277
STA. 1530+00		TO STA. 1542+00		
FED. ROAD DIST. NO.		ILLINOIS FED. AID PROJECT		
62302		*1818, ETC, 2324.6-1P/R-9		

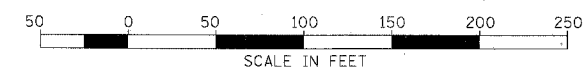
NOTE:

1. PAVEMENT ELEVATIONS ALONG GORES, RAMPS, AND IN AREAS OF SUPERELEVATION TRANSITION ARE PROVIDED AT 25' INTERVALS, FOR ALL OTHER ELEVATIONS, REFER TO PROFILE AND TYPICAL SECTIONS.



BOWMAN, BARRETT & ASSOCIATES INC.  
CONSULTING ENGINEERS  
Chicago, Illinois  
312.228.0100  
www.bbainc.com

- LEGEND
- \*\*\* ELEVATION STATIONED OFF OF SB I-94/90 EXPRESS LANES
  - (\*\*\*) ELEVATION STATIONED OFF OF SB I-94/90 LOCAL LANES
  - [\*\*\*] ELEVATION STATIONED OFF OF SLIP RAMP ALIGNMENT
  - XXXXX TEMPORARY PAVEMENT (INTERSTATE) / SHOULDERS



REVISIONS NAME	DATE

ILLINOIS DEPARTMENT OF TRANSPORTATION  
F.A.I. 94/90 (DAN RYAN EXPRESSWAY)  
31ST STREET TO 71ST STREET  
SB EXPRESS LANE RECONSTRUCTION  
PAVEMENT JOINTING AND ELEVATION PLAN  
SOUTHBOUND STA. 1530+00 TO STA. 1542+00  
SCALE: 1"=20'  
DATE: 07/07/05  
DRAWN BY: TER  
CHECKED BY: JDC

JT-15  
12/25/04 PM  
6/28/2005