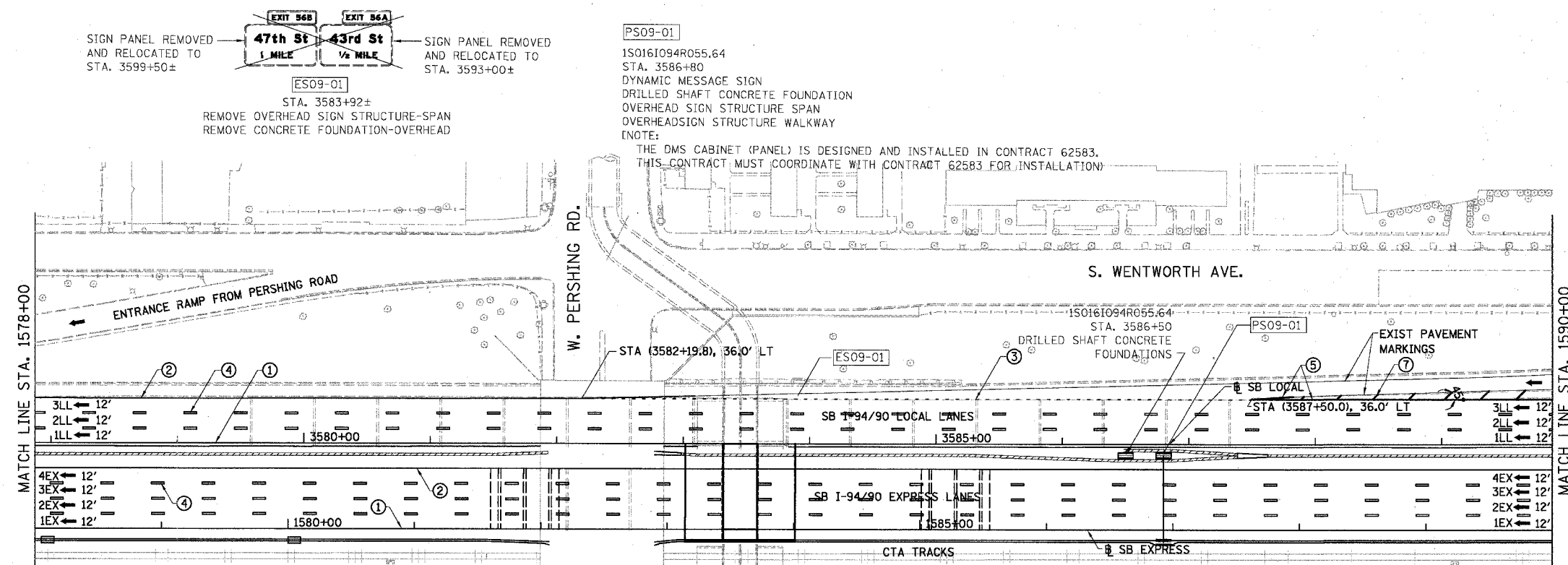


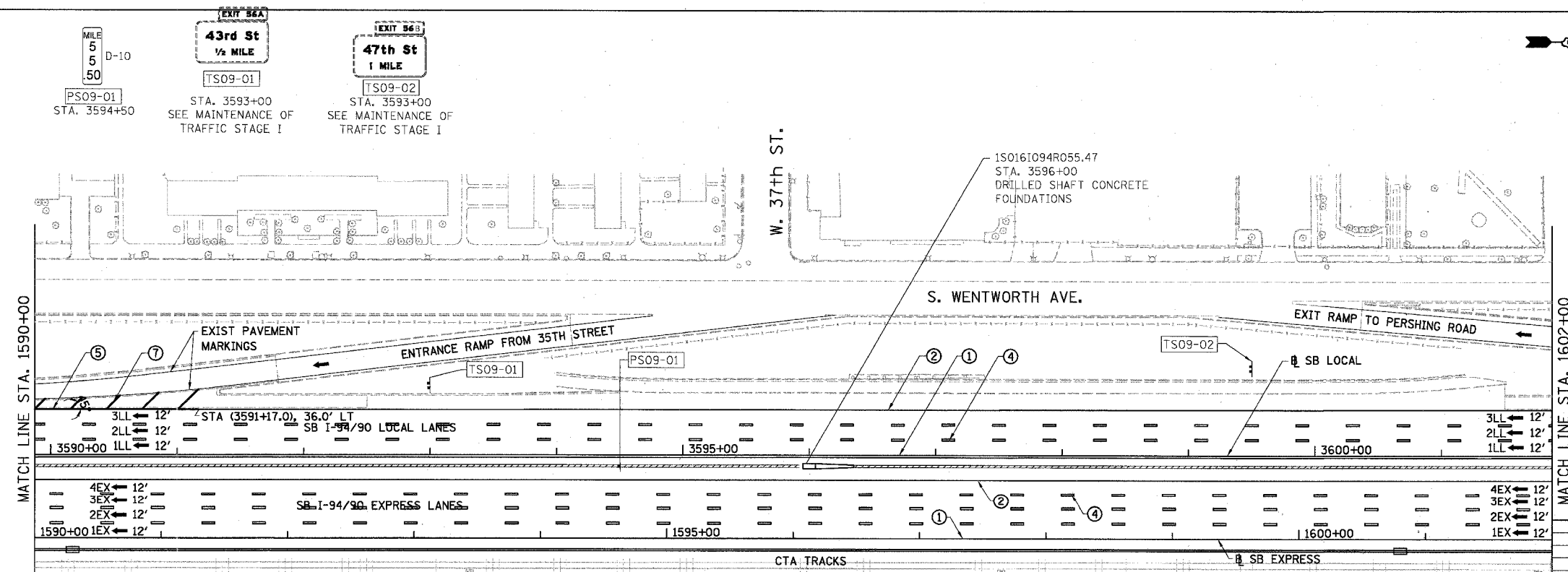
F.A.I.	SECTION	COUNTY	TOTAL SHEETS	SHEET NO.
94/90		COOK	598	295
STA. 1578+00		TO STA. 1602+00		
FED. ROAD DIST. NO.		ILLINOIS FED. AID PROJECT		
62302 • (1818, ETC, 2324.6-1PR-9				



- LEGEND**
- ① LINE 4" (YELLOW EDGE LINE)
 - ② LINE 4" (WHITE EDGE LINE)
 - ③ LINE 4" (SKIP DASH, 6' SKIP - 2' DASH, WHITE)
 - ④ LINE 5" (SKIP DASH, 30' SKIP - 10' DASH, WHITE)
 - ⑤ LINE 8" (WHITE GORE LINE)
 - ⑥ LINE 8" (SKIP DASH, 12' SKIP - 3' DASH, WHITE)
 - ⑦ LINE 12" (DIAGONAL, 30' C-C)
 - ⑧ LINE 12" (DIAGONAL, 500' C-C)
 - ⑨ LETTERS AND SYMBOLS

- ESx-xx EXISTING SIGNS
- TSx-xx TEMPORARY SIGNS
- PSx-xx PROPOSED SIGNS

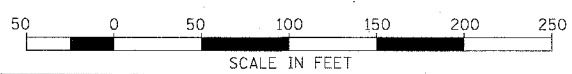
STATIONING
 +##.## STATION PROVIDED FROM THE I-90/94 EXPRESS LANES
 (##.##) STATION PROVIDED FROM THE I-90/94 LOCAL LANES
 [-##.##] STATION PROVIDED FROM THE SLIP RAMP



NOTE:
 ALL PAVEMENT MARKINGS ON THIS SHEET WILL BE EPOXY PAVEMENT MARKING, UNLESS OTHERWISE NOTED. PMK-9

REVISIONS	
NAME	DATE

ILLINOIS DEPARTMENT OF TRANSPORTATION
 F.A.I. 94/90 (DAN RYAN EXPRESSWAY)
 31ST STREET TO 71ST STREET
 SB EXPRESS LANE RECONSTRUCTION
 PAVEMENT MARKING AND SIGNING PLAN
 SOUTHBOUND STA. 1578+00 TO STA. 1602+00
 SCALE: 1"=50'
 DATE: 07/07/05
 DRAWN BY: RA
 CHECKED BY: RS



BOWMAN, BARRETT & ASSOCIATES INC.
 CONSULTING ENGINEERS
 Chicago, Illinois
 312.228.0100
 www.bbandainc.com

6/24/2005 3:55:27 PM