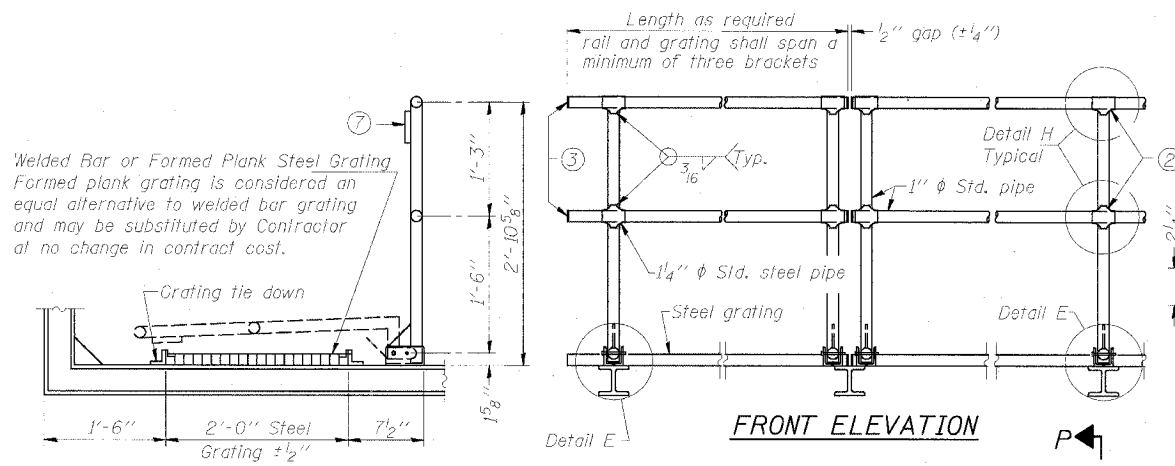
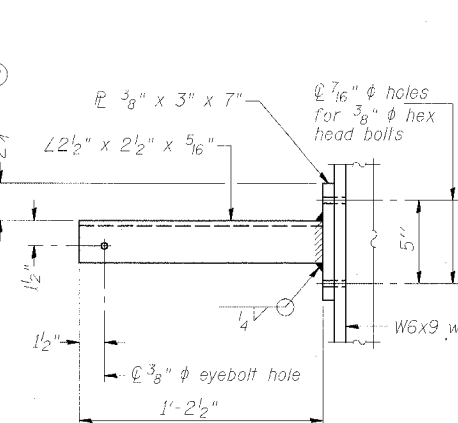


STATE OF ILLINOIS  
DEPARTMENT OF TRANSPORTATION

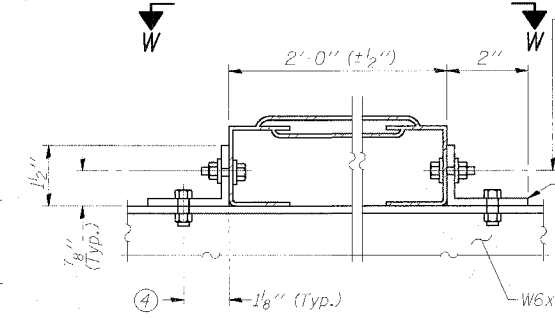
ROUTE NO.	SECTION	COUNTY	TOTAL SHEETS	SHEET NO.
94/90		COOK	598	338
FED. ROAD DIST. NO. 1		ILLINIS	FED. AID PROJECT	
62302		•(1818, ETC. 2324.6-1P1R-9		



**SIDE ELEVATION** **DETAIL D HANDRAIL**

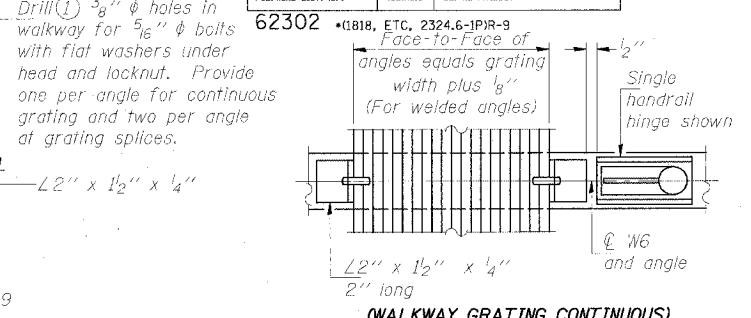


**SECTION P-P**

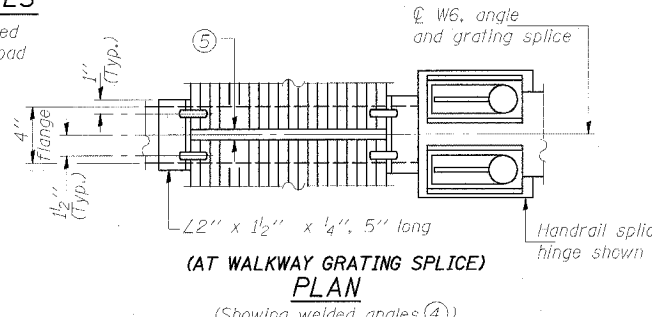


**ALTERNATE FORMED PLANK GRATING DETAILS**

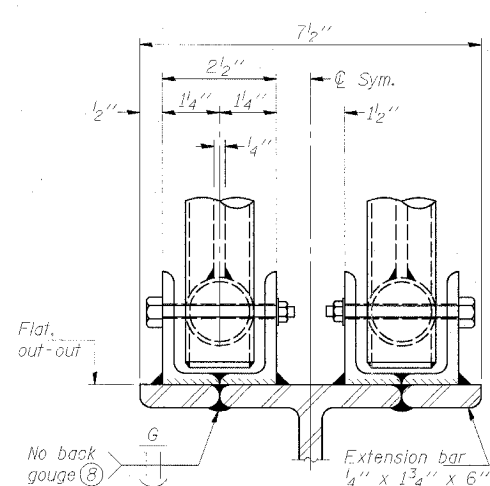
Plank Grating: nominal depth = 2 1/2" (± 1/2"); perforated or expanded steel sheet with a non-skid surface (non-serrated) concentrated load capacity = 500 lbs. with 6'-0" clear span.



**(WALKWAY GRATING CONTINUOUS)**

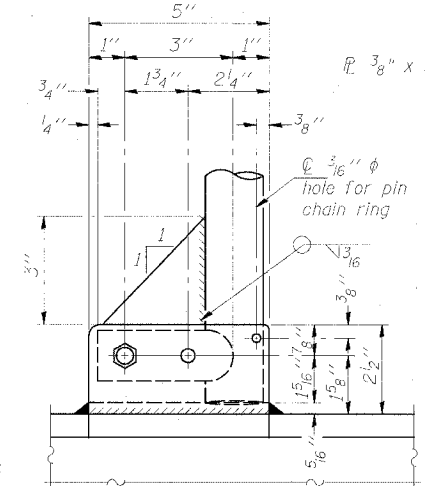


**(AT WALKWAY GRATING SPLICE) PLAN**

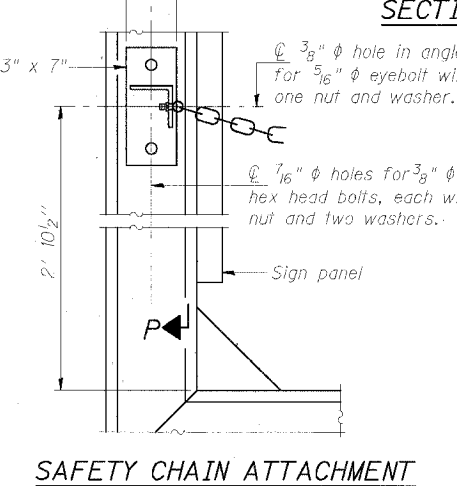


**ELEVATION AT HANDRAIL JOINT**

(Details not shown same as "FRONT ELEVATION")

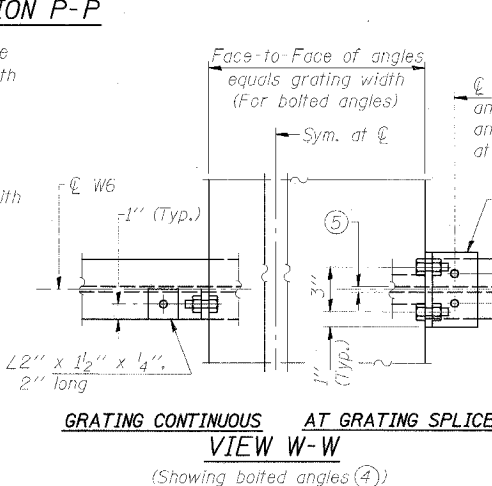


**SIDE ELEVATION**



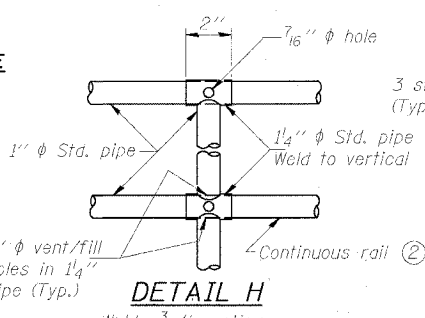
**SAFETY CHAIN ATTACHMENT**

(With Sign Present)  
Items not shown same as "SIDE ELEVATION" and "SAFETY CHAIN"



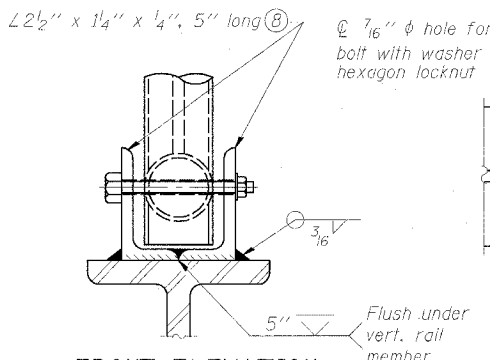
**GRATING CONTINUOUS AT GRATING SPLICE VIEW W-W**

(Showing bolted angles 4)



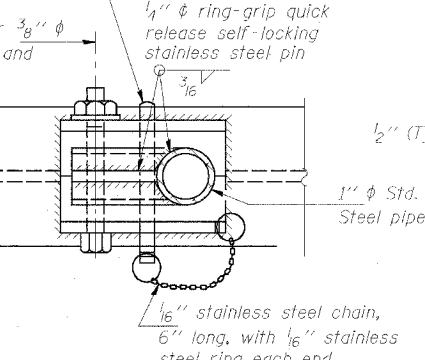
**DETAIL H**

Welds: 3/16" continuous

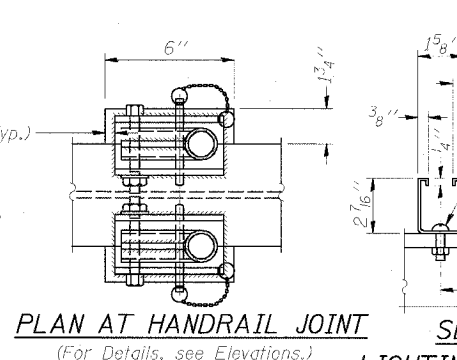


**FRONT ELEVATION**

(See above Elevations for dimensions.)

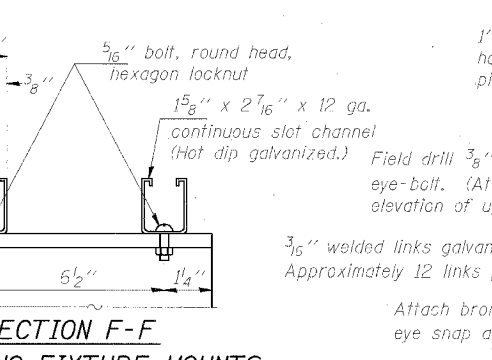


**PLAN AT SINGLE HANDRAIL HINGE**



**PLAN AT HANDRAIL JOINT**

(For Details, see Elevations.)



**SECTION F-F LIGHTING FIXTURE MOUNTS**

(If required)

NUMBER	REVISION	DATE

DESIGNED	MSA
CHECKED	AS
DRAWN	MD
CHECKED	MSA

EXAMINED	
PASSED	

**DETAIL E**

- NOTES**
- Drilling holes in grating may be done in shop or field, based on Contractor's preference and subject to accurate alignment.
  - Horizontal rail member shall be continuous thru 1 1/4" pipe. Provide 7/16" hole in fitting for 3/8" bolt. Field drill 1/16" hole in horizontal rail member. Provide washer and locknut for bolt. (Use 5/16" eyebolts in 7/16" holes on top rail at ends only.)
  - Install standard force-fit end caps or weld 1/8" end plates with 1/8" c.f.w. and grind smooth. (All rail ends.)
  - Grating tie-down angles may be either bolted to W6x9 after galvanizing or welded to W6x9 before galvanizing, at the Contractor's option. (No weld on grating side.)
  - 3/8" (± 1/4") gap between grating panels at splice.
  - Chain to be hot dip galvanized after manufacture and suitable for prolonged exterior exposure. Alternate materials may be substituted with the Engineer's approval. Approximately 3'-6" long chain per location. Maximum sag with handrail erected = 4".
  - 1/8" x 1/2" x 2" welded to handrail posts to protect locations that contact grating.
  - Extrusions may be used in lieu of details shown, with approval by Engineer.
  - Field cut ends of light support channels shall be free of burrs or hazardous projections and coated with zinc-rich primer or equivalent.

**BRIDGE MOUNT SIGN STRUCTURES  
WALKWAY DETAILS**

ILLINOIS DEPARTMENT OF TRANSPORTATION  
F.A.I. 94/90 (DAN RYAN EXPRESSWAY)  
31ST STREET TO 71ST STREET  
SB EXPRESS LANE RECONSTRUCTION  
OVERHEAD SIGN STRUCTURES CANTILEVER