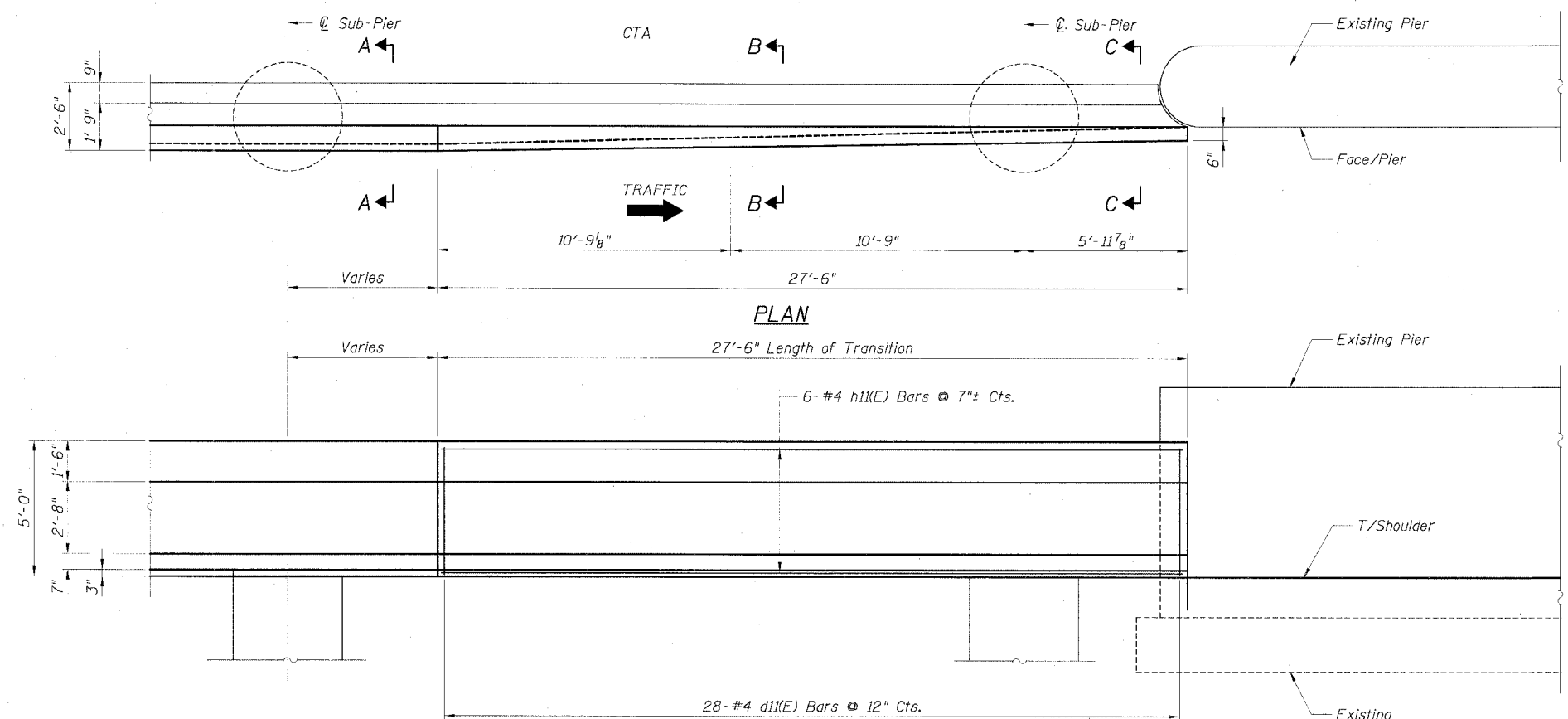


STATE OF ILLINOIS
DEPARTMENT OF TRANSPORTATION

F.A.I. RTE.	SECTION	COUNTY	TOTAL SHEETS	SHEET NO.
90/94	*	COOK	598	421
STA.	TO STA.			
FED. ROAD DIST. NO. 1 ILLINOIS FED. AID PROJECT				
* (1818, ETC, 2324.6-1P)R-9 62302				

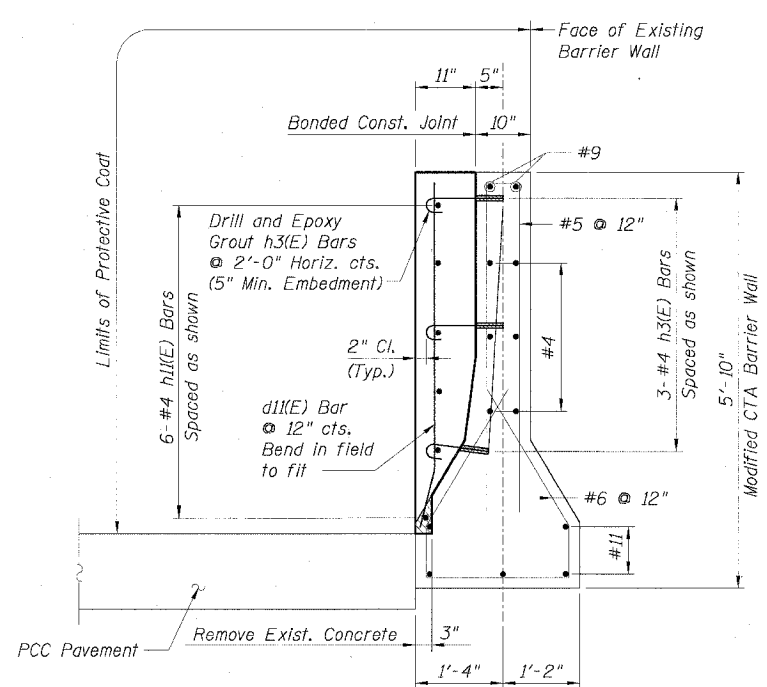
**BILL OF MATERIAL
FOR ONE TRANSITION**

Bar	No.	Size	Length	Shape
d1(E)	28	#4	5'-3"	—
h3(E)	42	#4	1'-6"	⌋
h1(E)	6	#4	27'-2"	—
Item	Unit	Quantity		
Reinforcement Bars, Epoxy Coated	Lbs.	250		
Concrete Structures	Cu. Yd.	3.2		
Protective Coat	Sq. Yd.	40		
Concrete Removal	Cu. Yd.	0.1		

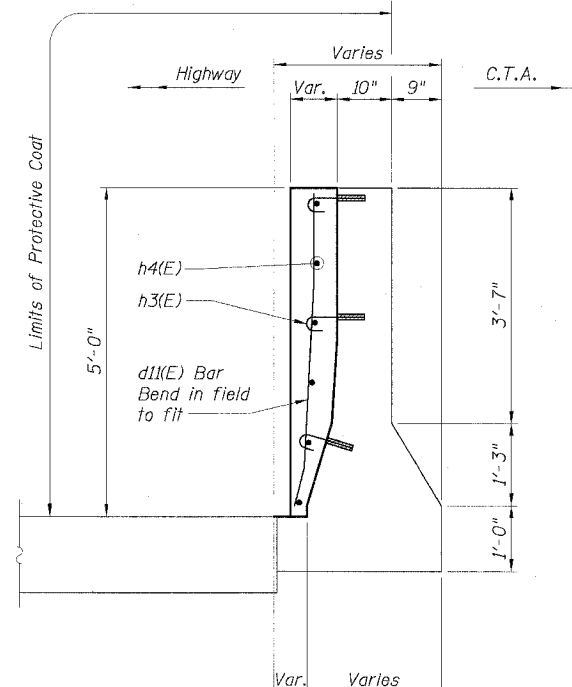


LEGEND:
 Concrete Removal

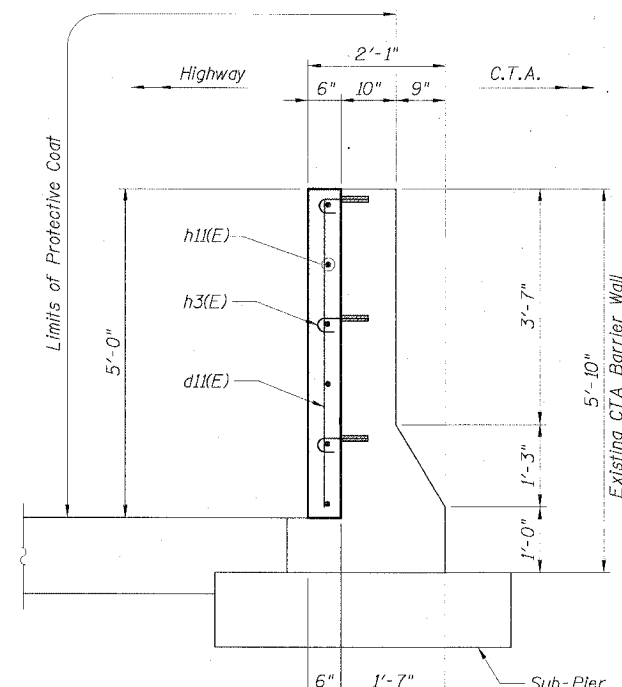
- NOTES:**
1. Drilling and grouting of #4 h3(E) bars shall be in accordance with Section 584 of the Standard Specifications.
 2. The cost of drilling holes, furnishing and placing Epoxy Grout and setting #4 h3(E) bars shall be included in the cost per cubic yard for Concrete Structures.
 3. Provide joints in facing to match those in the existing barrier.
 4. For Soldier Pile and Lagging Retention System see Sheets 4 and 5.
 5. For Sections C-C, D-D and E-E see Sheet
 6. For locations of Transition, see Roadway Plans.



SECTION A



SECTION B



SECTION C-C

REVISIONS	
NAME	DATE

Sheet B13 of 18
 ILLINOIS DEPARTMENT OF TRANSPORTATION
 F.A.I. 90/94 (DAN RYAN EXPRESSWAY)
**EXISTING BARRIER WALL MODIFICATIONS
 AT CTA STATIONS
 PROPOSED T/S SHOULDER AT OR ABOVE EXISTING
 VERT. REFACED BARRIER TO PIER
 TRANSITION DETAILS (NO TAPER)**
 SCALE: None DRAWN BY: CHD
 DATE: JULY 7, 2005 CHECKED BY: RDP

P:\4468\Struct\Bk_Dwg\Chit_62302\03_CTA_Barr\Barr.ctb 02/24/2005 02:20:37 PM